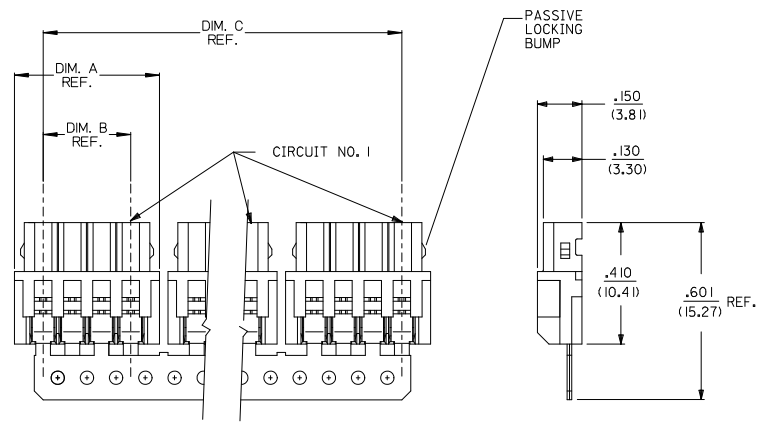


| DISCRETE CONN. CKT SIZE | NO OF CONN. IN CHAIN | DIM. A | DIM. B | DIM. C | PASSIVE LOCKING BUMPS |
|-------------------------|----------------------|------------------|------------------|------------------|-----------------------|
| 2 | 10 | .292 (7.42) | .098 (2.50) | 2.756 (70.00) | YES |
| 3 | 8 | .390 (9.92) | .197 (5.00) | 2.953 (75.00) | YES |
| 4 | 6 | .489 (12.42) | .295 (7.50) | 2.756 (70.00) | YES |
| 5 | 5 | .587 (14.92) | .394 (10.00) | 2.756 (70.00) | YES |
| 6 | 4 | .685 (17.40) | .492 (12.50) | 2.556 (65.00) | YES |
| 7 | 4 | .783 (19.90) | .591 (15.00) | 2.952 (75.00) | YES |
| 8 | 3 | .882 (22.40) | .689 (17.50) | 2.461 (62.50) | YES |
| 9 | 3 | .980 (24.90) | .787 (20.00) | 2.756 (70.00) | NO |
| 10 | 2 | 1.079 (27.40) | .886 (22.50) | 1.969 (50.00) | NO |
| 11 | 2 | 1.177 (29.90) | .984 (25.00) | 2.165 (55.00) | NO |
| 12 | 2 | 1.276 (32.40) | 1.082 (27.50) | 2.362 (60.00) | NO |
| 13 | 2 | 1.374 (34.90) | 1.181 (30.00) | 2.559 (65.00) | NO |
| 14 | 2 | 1.472 (37.40) | 1.279 (32.50) | 2.756 (70.00) | NO |
| 15 | 2 | 1.571 (39.90) | 1.378 (35.00) | 2.952 (75.00) | NO |



NOTES:

- MATERIAL:
HOUSING: POLYESTER, 7.5% GLASS FILLED, 94V-0
TERMINAL: PHOS. BRONZE
- FINISH:
(P909) *OVERALL HOT TIN DIP: .000100/0.00254 MIN.
*THE PRIMARY SHIPPING CARTON WILL BE LABELED "COMPLIANT TO RoHS DIRECTIVE 2002/95/EC AND ELV ANNEX II OF DIRECTIVE 2000/53/EC". CARTONS WITHOUT THIS LABEL MAY CONTAIN PRODUCT WITH TIN/LEAD PLATINGS.
- FOR PRODUCT SPEC'S SEE PS-42219-0001
- PACKAGING SPECIFICATION: SEE LENGEND
- THE WIRE TERMINATION SPEC IS SMES-42219-0002.
- THIS PART CONFORMS TO CLASS B REQUIREMENTS OF COSMETIC SPECIFICATION PS-45499-002.

42219-N***
NO OF CKTS
HOUSING COLOR
PACKAGING SPEC.
BLANK= PK-70873-0140 (LARGE BOX)
I= PK-40873-0061 (SMALL BOX)
TERMINAL
BLANK=42218

A= (NATURAL)
B= (BLUE)
C= (BROWN)
D= (RED)
E= (ORANGE)
F= (YELLOW)
G= (GREEN)
H= (GRAY)

| | |
|---|----|
| 3 | J1 |
| 2 | J1 |
| 1 | J1 |

| | | | | | | |
|---|-----------------|---------------------------------------|-----------------------|---|---------------------------------------|------------------------|
| UPDATE NOTES EC NO: UGP2007-1815 DRAWN BY: DIMER 2007/01/26 CHECKED BY: CHYKADERR 2007/01/30 APPROVED BY: APPRI/SITH 2007/02/01 | QUALITY SYMBOLS | GENERAL TOLERANCES (UNLESS SPECIFIED) | DIMENSION STYLE IN/MM | SCALE 4:1 | DESIGN UNITS METRIC | THIRD ANGLE PROJECTION |
| | ▽=0 | 4 PLACES ± --- ± --- | mm INCH | DRAWN BY AG DATE 1989/02/06 | TITLE 2.5MM I.D.T. CONNECTOR ASSEMBLY | |
| | ▽=0 | 3 PLACES ± --- ± .010 | | CHECKED BY RE DATE 1989/02/06 | MOLEX INCORPORATED | |
| | | 2 PLACES ± 0.25 ± .014 | | APPROVED BY WRL DATE 1989/02/06 | MATERIAL NO. SDA-42219-x | DOCUMENT NO. |
| | | 1 PLACE ± 0.36 ± --- | | DRAFT WHERE APPLICABLE MUST REMAIN WITHIN DIMENSIONS | | |
| | | ANGULAR ± 1/2° | | SEE CHART | | |
| | | | | THIS DRAWING CONTAINS INFORMATION THAT IS PROPRIETARY TO MOLEX INCORPORATED AND SHOULD NOT BE USED WITHOUT WRITTEN PERMISSION | | |

