

FEATURES AND SPECIFICATIONS

Features and Benefits

- Sizes 4 to 54 circuits
- Polarized to mate with dual row, low profile shrouded headers

Physical

Housing: Black glass-filled polyester, UL 94V-0
 Temperature: -40 to +120°C

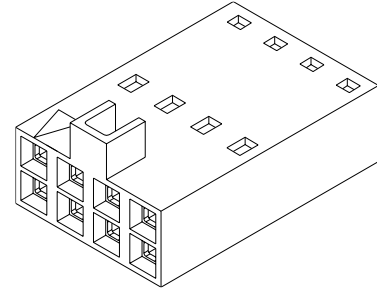
molex® 2.54mm (.100") Pitch SL™ Crimp Housing

70450

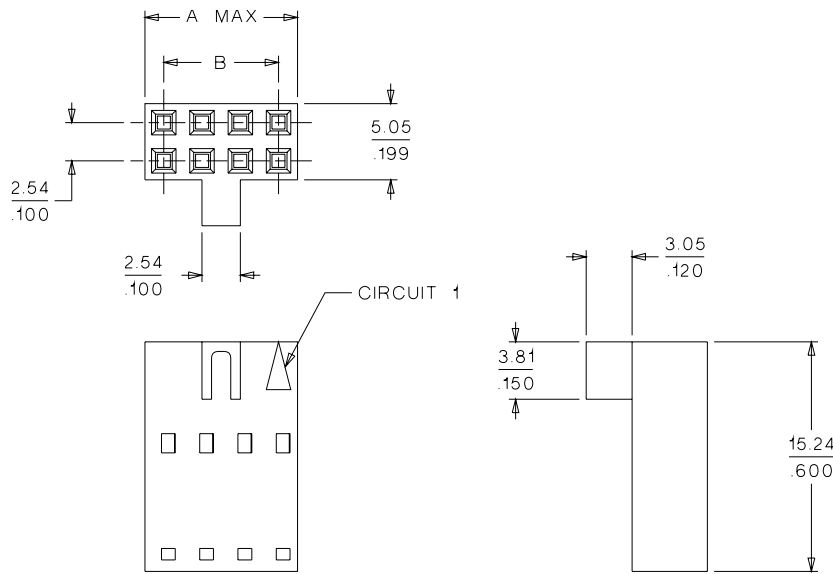
Dual Row Version B, Polarized

Reference Information

Product Specification: PS-70058
 Packaging: Bag
 UL File No.: E29179
 CSA File No.: LR19980
 Mates With: 70246, 70247, 87256 and 87257
 Use With: 70058 and 71851 crimp terminals
 Designed In: Inches



Not For Use With C-Grid III™ Components



Note: The circuit 1 indicator for the 70450C will be superseded by the circuit 1 indicator of the 70004 and 70013 interim clips

Delivered on a carrier with 20 pieces per strip.

Actual Size **Universal Polarizing Pin 40713-1**
 Order No. 15-04-0292

ORDERING INFORMATION AND DIMENSIONS

Circuits	Order No.	Dimension	
		A	B
4	• 22-55-2042	5.05 (.199)	2.54 (.100)
6	• 22-55-2062	7.59 (.299)	5.08 (.200)
8	• 22-55-2082	10.13 (.399)	7.62 (.300)
10	• 22-55-2102	12.67 (.499)	10.16 (.400)
12	• 22-55-2122	15.21 (.599)	12.70 (.500)
14	• 22-55-2142	17.75 (.699)	15.24 (.600)
16	• 22-55-2162	20.29 (.799)	17.78 (.700)
18	• 22-55-2182	22.83 (.899)	20.32 (.800)
20	• 22-55-2202	25.37 (.999)	22.86 (.900)
22	• 22-55-2222	27.91 (1.099)	25.40 (1.000)
24	• 22-55-2242	30.45 (1.199)	27.94 (1.100)
26	• 22-55-2262	32.99 (1.299)	30.48 (1.200)
28	• 22-55-2282	35.53 (1.399)	33.02 (1.300)

Circuits	Order No.	Dimension	
		A	B
30	• 22-55-2302	38.07 (1.499)	35.56 (1.400)
32	• 22-55-2322	40.61 (1.599)	38.10 (1.500)
34	• 22-55-2342	43.15 (1.699)	40.64 (1.600)
36	• 22-55-2362	45.69 (1.799)	43.18 (1.700)
38	• 22-55-2382	48.23 (1.899)	45.72 (1.800)
40	• 22-55-2402	50.77 (1.999)	48.26 (1.900)
42	• 22-55-2422	53.31 (2.099)	50.80 (2.000)
44	• 22-55-2442	55.85 (2.199)	53.34 (2.100)
46	• 22-55-2462	58.39 (2.299)	55.88 (2.200)
48	• 22-55-2482	60.93 (2.399)	58.42 (2.300)
50	• 22-55-2502	63.47 (2.499)	60.96 (2.400)
52	• 22-55-2522	66.01 (2.599)	63.50 (2.500)
54	• 22-55-2542	68.55 (2.699)	66.04 (2.600)

• US Standard Product, available through Molex franchised distributors