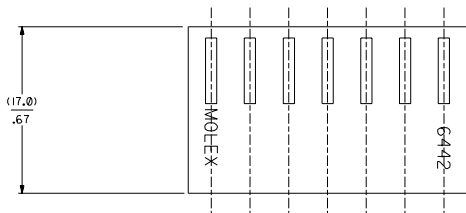


SECTION "C-C"



NO. OF CKT'S.	DIM. A	DIM. B
1	-----	(4.78+.18)
2	(3.96+.13)	.188+.007
	.156+.005	(8.74+.18)
3	(7.92+.13)	.344+.007
	.312+.005	(12.70+.18)
4	(11.89+.13)	.500+.007
	.468+.005	(16.66+.18)
5	(15.85+.13)	.656+.007
	.624+.005	(20.62+.18)
6	(19.81+.13)	.812+.007
	.780+.005	(24.59+.18)
7	(23.77+.13)	.968+.007
	.936+.005	(28.55+.18)
8	(27.74+.25)	1.124+.007
	1.092+.010	(32.51+.30)
9	(31.70+.25)	1.280+.012
	1.248+.010	(36.47+.30)
10	(35.66+.25)	1.436+.012
	1.404+.010	(40.44+.30)
11	(39.62+.25)	1.592+.012
	1.560+.010	(44.40+.30)
12	(43.59+.25)	1.748+.012
	1.716+.010	(48.36+.30)
13	(47.55+.30)	1.904+.012
	1.872+.012	(52.32+.36)
14	(51.51+.36)	2.060+.014
	2.028+.014	(56.29+.41)
15	(55.47+.36)	2.216+.016
	2.184+.014	(60.25+.41)
16	(59.44+.36)	2.372+.016
	2.340+.014	(64.21+.41)
17	(63.40+.36)	2.528+.016
	2.496+.014	(68.17+.41)
18	(67.36+.36)	2.684+.016
	2.652+.014	(72.14+.41)
19	(71.32+.36)	2.840+.016
	2.808+.014	(76.10+.41)
20	(75.29+.46)	2.996+.016
	2.964+.018	(80.06+.51)
21	(79.25+.46)	3.152+.020
	3.120+.018	(84.02+.51)
22	(83.21+.46)	3.308+.020
	3.276+.018	(87.99+.51)
23	(87.17+.46)	3.464+.020
	3.432+.018	(91.95+.51)
24	(91.14+.46)	3.620+.020
	3.588+.018	(95.91+.51)

NOTES :

- HOUSING SHOWN ABOVE IS STANDARD HOUSING WITH NO OPTIONS.
- THIS HOUSING FOR USE WITH TERMINAL NO. 6438-\*, (18-22 GA.) WITH (2.79/.110) MAX. INSULATION DIA. 6838-\*, (18-24 GA.) WITH (2.79/.110) MAX. INSULATION DIA. 7258-\*, (22-26 GA.) WITH (1.65/.065) MAX. INSULATION DIA.
- CIRCUIT SIZE MOLDED ON 4 THRU 24 CIRCUIT HOUSINGS ONLY.
- SEE SHEET 2 FOR OPTIONS.
- THIS PART COMPLIES WITH PROD. SPEC. 40-02.
- MATERIAL: SEE LEGEND FOR MATERIAL CODE.

6442- \* N - \* - \* - \*

HOUSING OPTIONS

CODE	HOOKS	SIDE HOOKS	RAMP
BLANK	NONE	NONE	NONE
A	NONE	YES	NONE
R	NONE	NONE	FRICTION
B	NONE	NONE	TYPE B
C	NONE	NONE	TYPE C
D	NONE	NONE	TYPE D

VOLTAGE RATING OPTION  
BLANK=NONE  
V= \*250 VAC\* ON HOUSING

MAT'L. OPTION  
BLANK=NYLON 6/6, 94V-2.

MOLDED VOID CODE  
Z=NO VOIDS  
A=CKT. 1 VOID,  
B=CKT. 2 VOID, ETC.  
5=1ST MULTIPLE VOID,  
52=2ND MULTIPLE VOID, ETC.

NO. OF CKT'S.

4	G4	DELETE DYED PARTS
3	H	UCP2003-5590
2	F	BY 02/23/83 SCHAFER
1	H	G4 DEL UNTOOLED
		UCP2003-0794
		11/12/2005 SAMIEC

MFG. SH. REV. LTR. REVISIONS

DIMENSIONS SHOWN METRIC INCH

SCALE: 1" = 1" (1:1)

TITLE: HOUSING, FOR TRIFURCON TERM., (3.96) / .156

6442 SERIES DWG.

MOLEX INCORPORATED

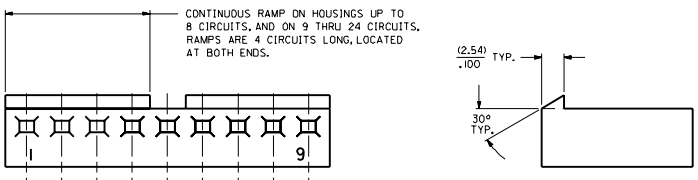
DATE: 12 / 3 / 86

SHEET NO. 1 OF 4

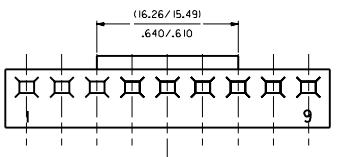
SEE CHART SD-6442

20 19 18 17 16 15 14 13 12 11 10 9 8 7 6 5 4 3 2 1

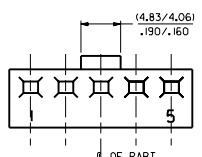
NO. OF CKT'S.	DIM. "C"	DIM. "D"
2	(16.48/15.60) .649/.614	(15.47/15.34) .609/.604
3	(20.45/19.56) .805/.770	(19.43/19.30) .765/.760
5	(28.37/27.48) 1.117/1.082	(27.36/27.23) 1.077/1.072



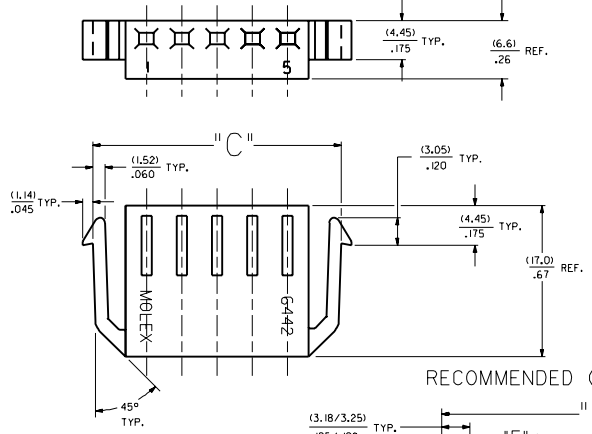
STD. RAMP OPTION CODE "R"



SELECTIVE RAMP OPTION CODE "C"

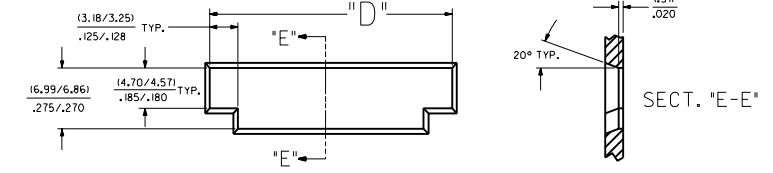


SELECTIVE RAMP OPTION CODE "B"

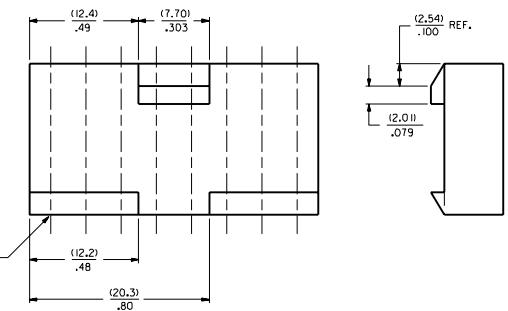


SIDE HOOKS OPTION CODE "A"

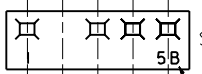
RECOMMENDED (2.03)/.080 THICK PANEL OPENING.



SECT. "E-E"



SELECTIVE RAMP OPTION CODE "D"  
INTERNATIONAL PART ONLY  
(8 CKT. PART ONLY)



SINGLE VOID

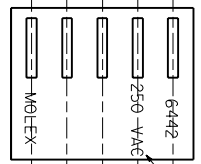
SINGLE CKT. VOID CODE



MULTIPLE VOIDS

MULTIPLE CKT. VOID CODE

MOLDED VOIDS  
SEE LEGEND ON SHT. 1  
SEE CHART FOR VOID CKT. LOCATIONS



OPT. VOLTAGE RATING

SEE LEGEND ON SHT. 1

REV.	DATE	DESCRIPTION	BY	CHKD.	APP'D.
1		REVISIONS			
2		REVISIONS			
3		REVISIONS			
4		REVISIONS			
5		REVISIONS			
6		REVISIONS			
7		REVISIONS			
8		REVISIONS			
9		REVISIONS			
10		REVISIONS			
11		REVISIONS			
12		REVISIONS			
13		REVISIONS			
14		REVISIONS			
15		REVISIONS			
16		REVISIONS			
17		REVISIONS			
18		REVISIONS			
19		REVISIONS			
20		REVISIONS			

20 19 18 17 16 15 14 13 12 11 10 9 8 7 6 5 4 3 2 1

