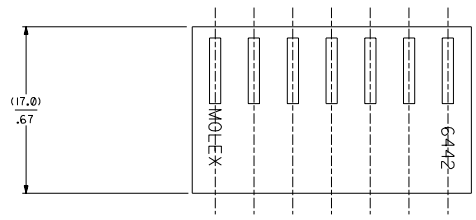


SECTION "C-C"



NO. OF CKT'S.	DIM. A	DIM. B
1	-----	(4.78+.18)
2	(3.96+.13)	.188+.007
	.156+.005	(8.74+.18)
3	(7.92+.13)	.344+.007
	.312+.005	(12.70+.18)
4	(11.89+.13)	.500+.007
	.468+.005	(16.66+.18)
5	(15.85+.13)	.656+.007
	.624+.005	(20.62+.18)
6	(19.81+.13)	.812+.007
	.780+.005	(24.59+.18)
7	(23.77+.13)	.968+.007
	.936+.005	(28.55+.18)
8	(27.74+.25)	1.124+.007
	1.092+.010	(32.51+.30)
9	(31.70+.25)	1.280+.012
	1.248+.010	(36.47+.30)
10	(35.66+.25)	1.436+.012
	1.404+.010	(40.44+.30)
11	(39.62+.25)	1.592+.012
	1.560+.010	(44.40+.30)
12	(43.59+.25)	1.748+.012
	1.716+.010	(48.36+.30)
13	(47.55+.30)	1.904+.012
	1.872+.012	(52.32+.36)
14	(51.51+.36)	2.060+.014
	2.028+.014	(56.29+.41)
15	(55.47+.36)	2.216+.016
	2.184+.014	(60.25+.41)
16	(59.44+.36)	2.372+.016
	2.340+.014	(64.21+.41)
17	(63.40+.36)	2.528+.016
	2.496+.014	(68.17+.41)
18	(67.36+.36)	2.684+.016
	2.652+.014	(72.14+.41)
19	(71.32+.36)	2.840+.016
	2.808+.014	(76.10+.41)
20	(75.29+.46)	2.996+.016
	2.964+.018	(80.06+.51)
21	(79.25+.46)	3.152+.020
	3.120+.018	(84.02+.51)
22	(83.21+.46)	3.308+.020
	3.276+.018	(87.99+.51)
23	(87.17+.46)	3.464+.020
	3.432+.018	(91.95+.51)
24	(91.14+.46)	3.620+.020
	3.588+.018	(95.91+.51)

- NOTES :
- HOUSING SHOWN ABOVE IS STANDARD HOUSING WITH NO OPTIONS.
 - THIS HOUSING FOR USE WITH TERMINAL NO. 6438-*, (18-22 GA.) WITH (2.79/.110) MAX. INSULATION DIA. 6838-*, (18-24 GA.) WITH (2.79/.110) MAX. INSULATION DIA. 7258-*, (22-26 GA.) WITH (1.65/.065) MAX. INSULATION DIA.
 - CIRCUIT SIZE MOLDED ON 4 THRU 24 CIRCUIT HOUSINGS ONLY.
 - SEE SHEET 2 FOR OPTIONS.
 - THIS PART COMPLIES WITH PROD. SPEC. 40-02.
 - MATERIAL: SEE LEGEND FOR MATERIAL CODE.

6442- * N - * - * - *

HOUSING OPTIONS

CODE	HOOKS	SIDE HOOKS	RAMP
BLANK	NONE	NONE	NONE
A	NONE	YES	NONE
R	NONE	NONE	FRICTION
B	NONE	NONE	TYPE B
C	NONE	NONE	TYPE C
D	NONE	NONE	TYPE D

VOLTAGE RATING OPTION
BLANK=NONE
V= *250 VAC* ON HOUSING

MAT'L. OPTION
BLANK=NYLON 6/6, 94V-2.

MOLDED VOID CODE
Z=NO VOIDS
A=CKT. 1 VOID,
B=CKT. 2 VOID, ETC.
5=1ST MULTIPLE VOID,
52=2ND MULTIPLE VOID, ETC.

NO. OF CKT'S.

4	G4	DELETE DYED PARTS
3	H	UCP2003-5590
2	F	BY 52/23 SCHAFER
1	H	G4 DEL UNTOOLED
		UCP2003-0794
		11/12/2005 SAMIEC

MFG. SH. REV. LTR. REVISIONS

DIMENSIONS SHOWN METRIC INCH

SCALE: 1" = 1" (1:1)

TITLE: HOUSING, FOR TRIFURCON TERM., (3.96)/.156

6442 SERIES DWG.

MOLEX INCORPORATED

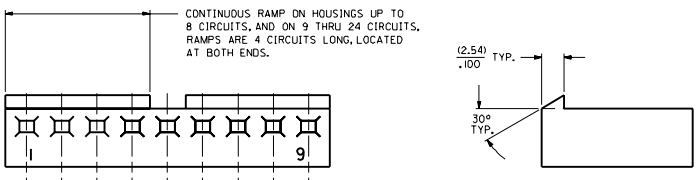
DATE: 12/3/86

SHEET NO. 1 OF 4

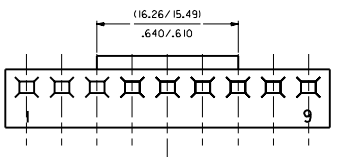
SEE CHART SD-6442

20 19 18 17 16 15 14 13 12 11 10 9 8 7 6 5 4 3 2 1

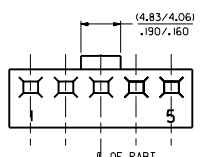
NO. OF CKT'S.	DIM. "C"	DIM. "D"
2	(16.48/15.60) .649/.614	(15.47/15.34) .609/.604
3	(20.45/19.56) .805/.770	(19.43/19.30) .765/.760
5	(28.37/27.48) 1.117/1.082	(27.36/27.23) 1.077/1.072



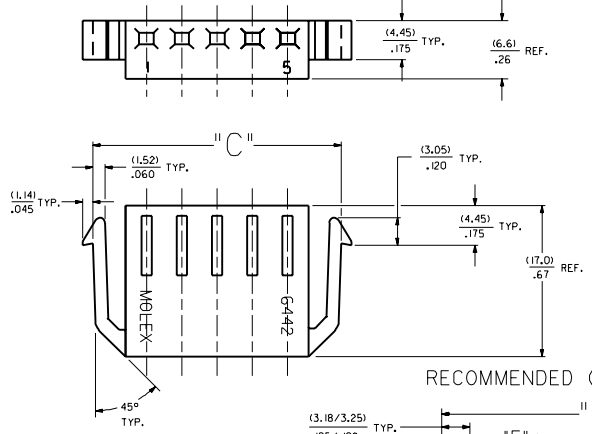
STD. RAMP OPTION CODE "R"



SELECTIVE RAMP OPTION CODE "C"

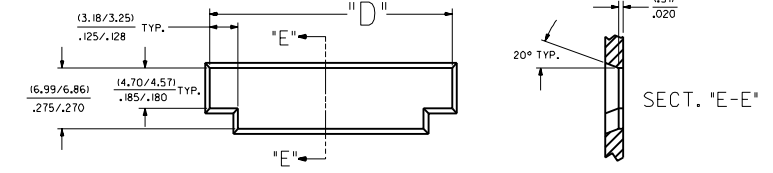


SELECTIVE RAMP OPTION CODE "B"

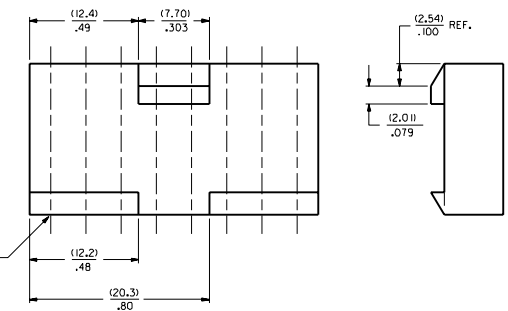


SIDE HOOKS OPTION CODE "A"

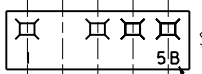
RECOMMENDED (2.03)/.080 THICK PANEL OPENING.



SECT. "E-E"

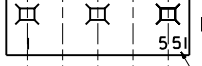


SELECTIVE RAMP OPTION CODE "D"
INTERNATIONAL PART ONLY
(8 CKT. PART ONLY)



SINGLE VOID

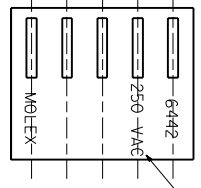
SINGLE CKT. VOID CODE



MULTIPLE VOIDS

MULTIPLE CKT. VOID CODE

MOLDED VOIDS
SEE LEGEND ON SHT. 1
SEE CHART FOR VOID CKT. LOCATIONS



OPT. VOLTAGE RATING

SEE LEGEND ON SHT. 1

REV.	DATE	BY	CHKD.	APP'D.	REVISIONS
1	01/15/86	LENZ	PATEL	LENZ	REVISED DIMENSIONS
2	01/15/86	LENZ	PATEL	LENZ	REVISED DIMENSIONS
3	01/15/86	LENZ	PATEL	LENZ	REVISED DIMENSIONS
4	01/15/86	LENZ	PATEL	LENZ	REVISED DIMENSIONS
5	01/15/86	LENZ	PATEL	LENZ	REVISED DIMENSIONS
6	01/15/86	LENZ	PATEL	LENZ	REVISED DIMENSIONS
7	01/15/86	LENZ	PATEL	LENZ	REVISED DIMENSIONS
8	01/15/86	LENZ	PATEL	LENZ	REVISED DIMENSIONS
9	01/15/86	LENZ	PATEL	LENZ	REVISED DIMENSIONS
10	01/15/86	LENZ	PATEL	LENZ	REVISED DIMENSIONS
11	01/15/86	LENZ	PATEL	LENZ	REVISED DIMENSIONS
12	01/15/86	LENZ	PATEL	LENZ	REVISED DIMENSIONS
13	01/15/86	LENZ	PATEL	LENZ	REVISED DIMENSIONS
14	01/15/86	LENZ	PATEL	LENZ	REVISED DIMENSIONS
15	01/15/86	LENZ	PATEL	LENZ	REVISED DIMENSIONS
16	01/15/86	LENZ	PATEL	LENZ	REVISED DIMENSIONS
17	01/15/86	LENZ	PATEL	LENZ	REVISED DIMENSIONS
18	01/15/86	LENZ	PATEL	LENZ	REVISED DIMENSIONS
19	01/15/86	LENZ	PATEL	LENZ	REVISED DIMENSIONS
20	01/15/86	LENZ	PATEL	LENZ	REVISED DIMENSIONS

20 19 18 17 16 15 14 13 12 11 10 9 8 7 6 5 4 3 2 1

