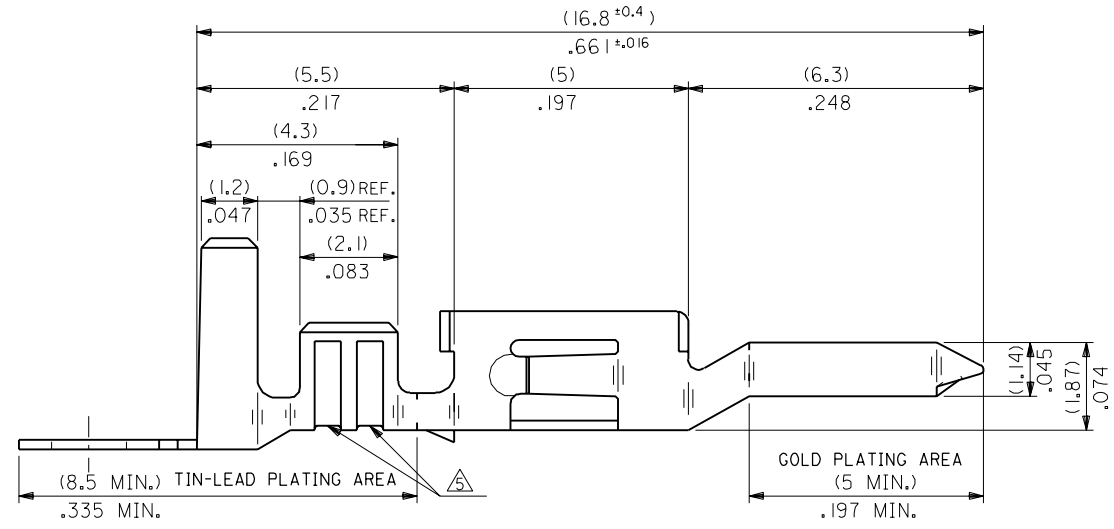
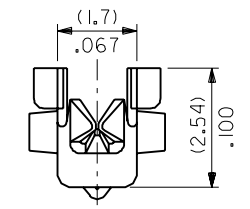
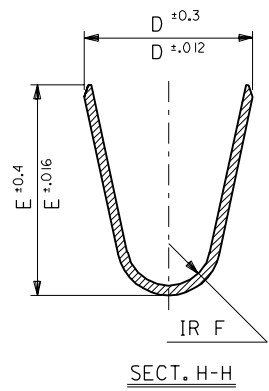
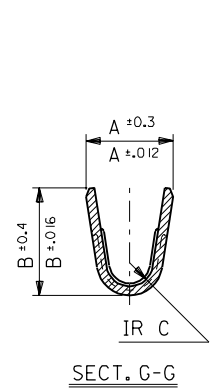
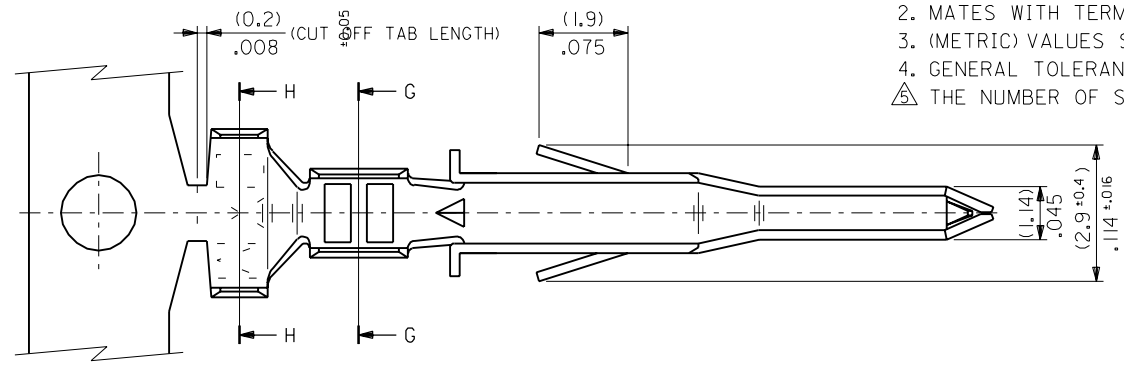


NOTES

1. APPLICABLE HOUSING : 5559 SERIES
 2. MATES WITH TERMINAL : 5556 SERIES
 3. (METRIC) VALUES SHOWN GOVERN OVER ENGLISH CONVERSION VALUES.
 4. GENERAL TOLERANCES OF ENGLISH CONVERSION VALUES : ±.008 INCH
- △ THE NUMBER OF SERRATIONS TO BE ONE FOR WIRE RANGE #22-28.



材料 MATERIAL		SEE SHEET 2 OF 2	MOLEX-JAPAN CO.,LTD. 日本モレックス株式会社	
仕上げ FINISH		SEE SHEET 2 OF 2	EDP. NO. SEE SHEET 2 OF 2	
適用電線範囲 WIRE RANGE		SEE SHEET 2 OF 2	ENG. NO. SHEET 1 OF 2 REV C	
被覆外径 INS. RANGE		SEE SHEET 2 OF 2	TITLE 名称 NEW MINI. FIT CONN. CRIMP PIN	
角度 ANGLE	±3°			
30以上 OVER	+0.3	C REVISED (J1038 II)	H.H	9/16/75
10以上 30未滿 UNDER	+0.25	B REVISED & REDRAWN (J10202)	H.H	9/4/77
10未滿 UNDER	+0.2	記号 LTR 変更内容 REVISION RECORD	DR. CHK. 日付 DATE	
一般公差 GENERAL TOLERANCES		REVISE ONLY ON CAD SYSTEM		
		DRAWN BY 9/13/73 H.HIRAMOTO	CHK'D BY 92/05/21 M.FUKUSHIMA	
		APP'D BY 92/05/21 M.ENOMOTO	尺度 SCALE 10 - 1	

ENG. NO. SHEET 2 OF 2
SD-5558**GS**

EDP NO. SEE CHART

≠MM DIMENSIONS IN METRIC DO NOT SCALE DRAWING

8 7 6 5 4 3 2 1

F
E
D
C
B

A

MATERIAL	FINISH	F	E	D	C	B	A	INS. RANGE	WIRE RANGE	EDP NO.	ENG. NO.	FORM
PHOSPHOR BRONZE	SELECTIVE GOLD (0.76μm)/30m.i. MIN. AND SELECTIVE TIN-LEAD (2.03μm)/80m.i. MIN. OVER NICKEL (1.27μm)/50m.i. MIN.	(0.9)	(4.5)	(3.6)	(0.6)	(2.7)	(2.3)	∅ (3.1) MAX. .122	# 16	39-00-0224	5558 PBGS3L	LOOSE
		.035	.177	.142	.024	.106	.091			↑ -0223	↑ PBGS3	CHAIN
		(0.6)	(2.3)	(2.3)	(0.4)	(1.65)	(1.8)	∅ (0.9-1.8)	#22-28	-0222	PBGS2L	LOOSE
		.024	.091	.091	.016	.065	.071	∅ .035-.071		-0221	PBGS2	CHAIN
BRASS	SELECTIVE GOLD (1.27μm)/50m.i. MIN. AND SELECTIVE TIN-LEAD (2.54μm)/100m.i. MIN. OVER NICKEL (1.27μm)/50m.i. MIN.	(0.9)	(4.5)	(3.6)	(0.6)	(2.7)	(2.3)	∅ (3.1) MAX. .122	# 16	-0148	GS9L	LOOSE
		.035	.177	.142	.024	.106	.091			↓ -0146	GS9	CHAIN
		(0.6)	(2.3)	(2.3)	(0.4)	(1.65)	(1.8)	∅ (0.9-1.8)	#22-28	39-00-0145	GS8	LOOSE
		.024	.091	.091	.016	.065	.071	∅ .035-.071		40-13-0854	GS7L	LOOSE
BRASS	SELECTIVE GOLD (0.38μm)/15m.i. MIN. AND SELECTIVE TIN-LEAD (2.03μm)/80m.i. MIN. OVER NICKEL (1.27μm)/50m.i. MIN.	(0.9)	(4.5)	(3.6)	(0.5)	(2.3)	(1.9)	∅ (1.3-3.1)	# 18-24	40-13-0853	GS7	CHAIN
		.035	.177	.142	.020	.091	.075	∅ .051-.122		39-00-0100	GS6L	LOOSE
		(0.9)	(4.5)	(3.6)	(0.6)	(2.7)	(2.3)	∅ (3.1) MAX. .122	# 16	↑ -0099	GS6	CHAIN
		.024	.091	.091	.016	.065	.071	∅ (0.9-1.8)	#22-28	-0098	GS5L	LOOSE
BRASS	SELECTIVE GOLD (0.76μm)/30m.i. MIN. AND SELECTIVE TIN-LEAD (2.03μm)/80m.i. MIN. OVER NICKEL (1.27μm)/50m.i. MIN.	(0.9)	(4.5)	(3.6)	(0.5)	(2.3)	(1.9)	∅ (1.3-3.1)	# 18-24	-0076	GS4L	LOOSE
		.035	.177	.142	.020	.091	.075	∅ .051-.122		-0075	GS4	CHAIN
		(0.9)	(4.5)	(3.6)	(0.6)	(2.7)	(2.3)	∅ (3.1) MAX. .122	# 16	-0096	GS3L	LOOSE
		.035	.177	.142	.024	.106	.091			-0095	GS3	CHAIN
MATERIAL	FINISH	(0.6)	(2.3)	(2.3)	(0.4)	(1.65)	(1.8)	∅ (0.9-1.8)	#22-28	-0088	GS2L	LOOSE
		.024	.091	.091	.016	.065	.071	∅ .035-.071		-0087	GS2	CHAIN
		(0.9)	(4.5)	(3.6)	(0.5)	(2.3)	(1.9)	∅ (1.3-3.1)	# 18-24	↓ -0054	↓ GSL	LOOSE
		.035	.177	.142	.020	.091	.075	∅ .051-.122		39-00-0053	5558 GS	CHAIN

材料 MATERIAL	SEE CHART	MOLEX-JAPAN CO.,LTD. 日本モレックス株式会社
THICKNESS : (0.203)/.008		
仕上げ FINISH	SEE CHART	EDP. NO.
適用電線範囲 WIRE RANGE	SEE CHART	SEE CHART
被覆外径 INS. RANGE	SEE CHART	ENG. NO. SHEET 2 OF 2 REV C
DRAWN BY 9/13/13 H.HIRAMOTO	CHK'D BY 92/05/21 M.FUKUSHIMA	TITLE 名称 NEW MINI. FIT CONN. CRIMP PIN
APP'D BY 92/05/21 M.ENOMOTO	尺度 SCALE 10 - 1	

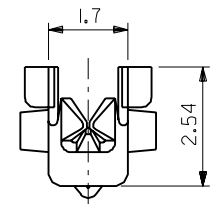
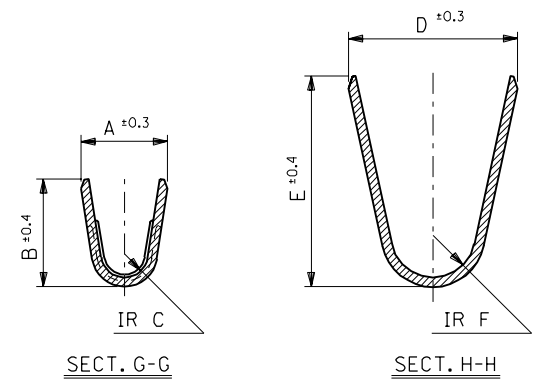
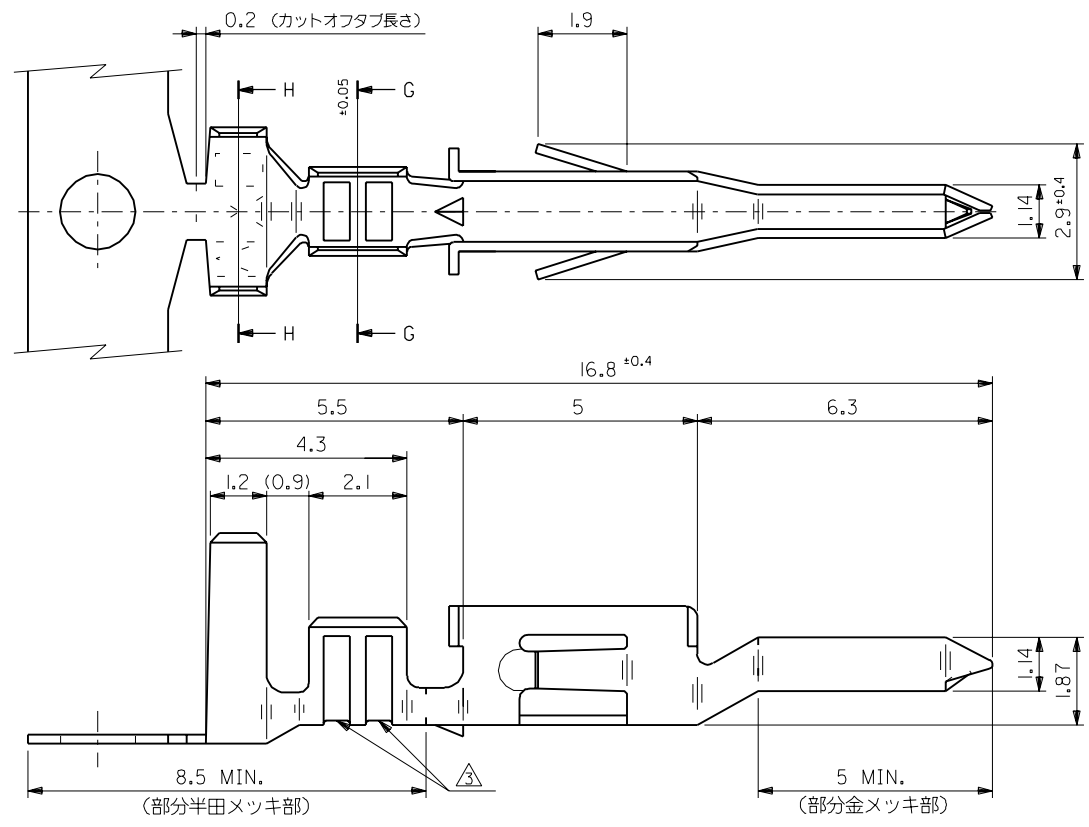
角度 ANGLE	+3°	
30 以上 OVER	+0.3	C SEE SHEET 1 OF 2
10 以上 30 未満 UNDER	+0.25	B SEE SHEET 1 OF 2
10 未満 UNDER	+0.2	
一般公差 GENERAL TOLERANCES		

THIS DRAWING CONTAINS INFORMATION THAT IS PROPRIETARY TO MOLEX(JAPAN) AND SHOULD NOT BE USED WITHOUT WRITTEN PERMISSION
本図面は日本モレックス(株)の所有する情報を含むもので 当社の許可なく複製を禁止する。 MXJ-8

5558.S34

EDP NO. 39-00-00** ENG. NO. SD-5558GS**

:MM DIMENSIONS IN METRIC DO NOT SCALE DRAWING



部分金メッキ : 0.76 μm MIN. 部分半田メッキ : 2 μm MIN. ニッケルメッキ (下地) : 1.27 μm MIN.	0.6	2.3	2.3	0.4	1.65	1.8	∅ 0.9-1.8	#22-28	39-00-0088	5558 GS2L	バラ状
									↑ -0087	↑ GS2	連鎖状
	0.9	4.5	3.6	0.5	2.3	1.9	∅ 1.3-3.1	#18-24	↓ -0054	↓ GSL	バラ状
									39-00-0053	5558 GS	連鎖状
メッキ	F	E	D	C	B	A	被覆外径	適用電線	EDP NO.	ENG. NO.	端子形状

注記

- 適合ハウジング : 5559 シリーズ
 - 嵌合相手 : 5556 シリーズ
- △ 適用電線が #22-28 の製品のセレーション数は 1 とする。

材料 MATERIAL 黄銅 (板厚: 0.203)	MOLEX-JAPAN CO.,LTD. 日本モレックス株式会社	
仕上げ FINISH 表参照	EDP. NO. 39-00-00**	
適用電線範囲 WIRE RANGE 表参照	ENG. NO. SD-5558GS**	REV C
被覆外径 INS. RANGE 表参照	TITLE 名称 NEW MINI. FIT CONN. CRIMP PIN	
DRAWN BY '91/4/8 H.HIRAMOTO	CHK'D BY '92/05/21 M.FUKUSHIMA	尺度 SCALE 10 - 1
APP'D BY '92/05/21 M.ENOMOTO		
角度 ANGLE +3°	REVISION RECORD	
30 以上 OVER +0.3	C 変更 (J10380)	H.H '91/5/21
10 以上 30 未満 UNDER +0.25	B 変更&再作図 (J10267)	H.H '91/4/12
10 未満 UNDER +0.2	記号 LTR 変更内容	DR. CHK. 日付 DATE
一般公差 GENERAL TOLERANCES	REVISE ONLY ON CAD SYSTEM	

THIS DRAWING CONTAINS INFORMATION THAT IS PROPRIETARY TO MOLEX(JAPAN) AND SHOULD NOT BE USED WITHOUT WRITTEN PERMISSION
本図面は日本モレックス(株)の所有する情報を含むもので 当社の許可なく複製を禁止する。 MXJ-8

5558GS22