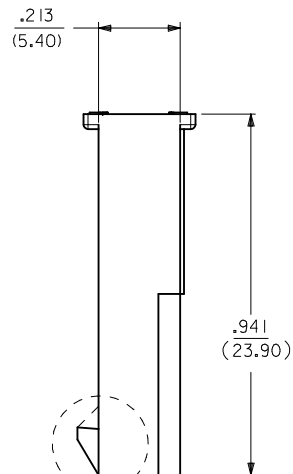
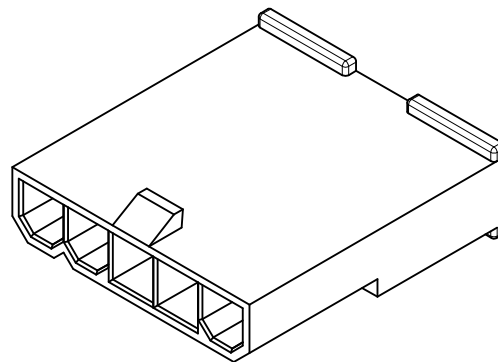


5 CKT WITHOUT
MOUNTING EARS SHOWN



LOCK OPTION:



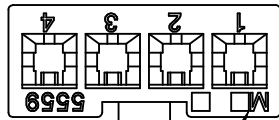
POSITIVE LOCK PASSIVE LOCK

CKT SIZE	DIM A	DIM B	DIM C	DIM D
4	.496 (12.60)	.709 (18.00)	.724 (18.40)	.921 (23.40)
5	.661 (16.80)	.874 (22.20)	.890 (22.60)	1.087 (27.60)
6	.827 (21.00)	1.039 (26.40)	1.055 (26.80)	1.252 (31.80)
7	.992 (25.20)	1.205 (30.60)	1.220 (31.00)	1.417 (36.00)
8	1.157 (29.40)	1.370 (34.80)	1.386 (35.20)	1.583 (40.20)
9	1.323 (33.60)	1.535 (39.00)	1.551 (39.40)	1.748 (44.40)
10	1.488 (37.80)	1.701 (43.20)	1.717 (43.60)	1.913 (48.60)
11	1.654 (42.00)	1.866 (47.40)	1.882 (47.80)	2.079 (52.80)
12	1.819 (46.20)	2.031 (51.60)	2.047 (52.00)	2.244 (57.00)

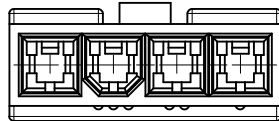
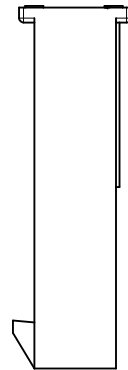
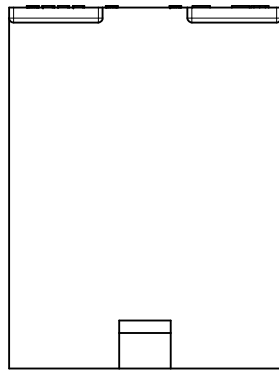
NOTES:

- MATERIAL: BLANK=NYLON 6/6, UL 94V-2, COLOR: NATURAL.
210=NYLON 6/6, UL 94V-0, COLOR: NATURAL.
400=NYLON 6/6, UL 94 V-0, COLOR: BLACK.
- FINISH: NOTE APPLICABLE
- PRODUCT SPECIFICATION: PS-5556-001
- PACKAGING SPECIFICATION: BULK PER PK-5559-003
- THIS PART MATES WITH RECEPTACLE NO. 5557.
- THIS PART IS FOR USE WITH MOLEX MALE TERMINAL NO. 5558-*
- PANEL MOUNT VERSION IS FOR USE WITH .031/.079/(0.80/2.00) THICK PANELS.
- PANEL SHOULD BE PUNCHED IN THE DIRECTION OF CONNECTOR INSERTION.
- FACTORY ID MAY BE LOCATED ON EARS.
- THIS PART CONFORMS TO CLASS B REQUIREMENTS OF COSMETIC SPECIFICATION PS-45499-002.
- PART IS NOT DESIGNED FOR CURRENT SHARING.
- PARTS ARE NOT TO BE MATED OR UNMATED WHILE CIRCUITS ARE LIVE.
- WIRES ARE TO BE DRESSED IN SUCH A MANNER TO ALLOW THE TERMINALS TO FLOAT FREELY IN THE POCKET.

OBS 04PZ EC NO: UCP2014-0298 DRW: NGUYEN CHKD: BELL APPR: FSMITH	REVISION DESCRIPTION 2013/07/22 2013/07/22 2013/08/16	QUALITY SYMBOLS ▽=0 ▽=0 ▽=0	GENERAL TOLERANCES (UNLESS SPECIFIED)		DIMENSION STYLE IN/MM		SCALE 4:1	DESIGN UNITS METRIC	THIRD ANGLE PROJECTION	
			mm	INCH	DRAWN BY KSS	DATE 2/19/89	TITLE MINI-FIT JR. SERIES PLUG (SINGLE ROW)			
			4 PLACES ± ---	± ---	CHECKED BY RJF	DATE 2/19/89				
			3 PLACES ± ---	± .010	APPROVED BY FSMITH		DATE 2011/03/10	DOCUMENT NO. SD-5559-NLP*		
2 PLACES ± 0.25	± .015	MATERIAL NO. SEE CHART		SHEET NO. 1 OF 3						
1 PLACE ± 0.38	± ---	DRAFT WHERE APPLICABLE MUST REMAIN WITHIN DIMENSIONS		THIS DRAWING CONTAINS INFORMATION THAT IS PROPRIETARY TO MOLEX INCORPORATED AND SHOULD NOT BE USED WITHOUT WRITTEN PERMISSION						
0 PLACE ±	±	ANGULAR ±1/2°								

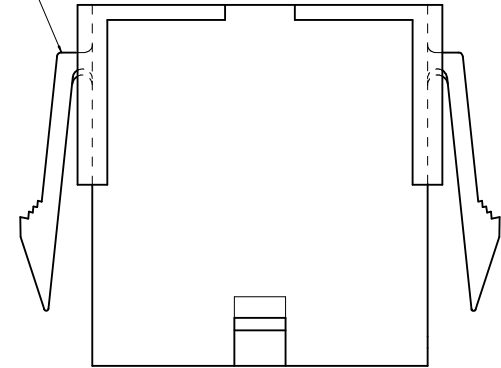


FACTORY ID
SEE NOTE 9

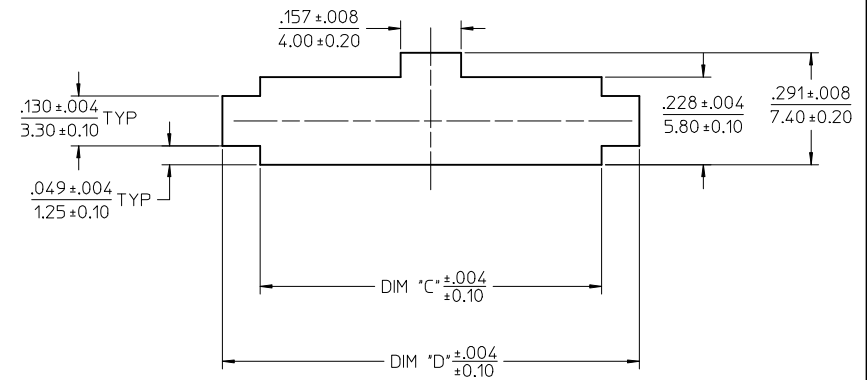


4 CKT WITHOUT
MOUNTING EARS SHOWN

SEE NOTE 9



WITH MOUNTING EARS



RECOMMENDED PANEL CUT-OUT
(SEE NOTE 7 & 8)

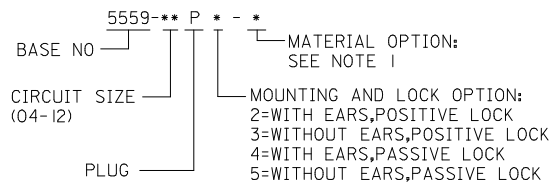
SEE SHEET 1 EC NO: UCP2014-0298 DRAWN: NGUYEN 2013/07/22 CHKD: BELL 2013/07/22 APPR: SMITH 2013/08/16	QUALITY SYMBOLS ▽=0 ▽=0 ▽=0	GENERAL TOLERANCES (UNLESS SPECIFIED)		DIMENSION STYLE IN/MM		SCALE 4:1	DESIGN UNITS METRIC	THIRD ANGLE PROJECTION		
			mm	INCH	DRAWN BY KSS	DATE 2/19/89	TITLE MINI-FIT JR. SERIES PLUG (SINGLE ROW) molex			
		4 PLACES ± ---	± ---	± ---	CHECKED BY RJF	DATE 2/19/89				
		3 PLACES ± ---	± .010	± .015	APPROVED BY FSMITH		DATE 2011/03/10	DOCUMENT NO. SD-5559-NLP*		SHEET NO. 2 OF 3
2 PLACES ± 0.25	± .015	± .015	ANGULAR ±1/2°		DRAFT WHERE APPLICABLE MUST REMAIN WITHIN DIMENSIONS					
1 PLACE ± 0.38	± ---	± ---	MATERIAL NO.		SIZE C THIS DRAWING CONTAINS INFORMATION THAT IS PROPRIETARY TO MOLEX INCORPORATED AND SHOULD NOT BE USED WITHOUT WRITTEN PERMISSION					
0 PLACE ±	±	±								

13	12	11	10	9	8	7	6	5	4	3	2	1	
TOOLED	PART NO	ENG NO	CKT SIZE	MOUNTING OPTION	LOCK OPTION	MATERIAL SEE NOTE I	TOOLED	PART NO	ENG NO	CKT SIZE	MOUNTING OPTION	LOCK OPTION	MATERIAL SEE NOTE I
J	O	39-01-4042	5559-04P2	4	W/EARS	POSITIVE	94V-2						
	YES	39-01-4046	5559-04P3	4	W/O EAR	POSITIVE	94V-2						
	YES	39-01-4043	5559-04P2-210	4	W/EARS	POSITIVE	94V-0						
	YES	39-01-4047	5559-04P3-210	4	W/O EAR	POSITIVE	94V-0						
	YES	46999-0561	5559-04P3-400	4	W/O EAR	POSITIVE	94V-0						
I	YES	39-01-4052	5559-05P2	5	W/EARS	POSITIVE	94V-2						
	YES	39-01-4056	5559-05P3	5	W/O EAR	POSITIVE	94V-2						
	YES	39-01-4053	5559-05P2-210	5	W/EARS	POSITIVE	94V-0						
	YES	39-01-4057	5559-05P3-210	5	W/O EAR	POSITIVE	94V-0						
	YES	50-30-4446	5559-05P3-400	5	W/O EAR	POSITIVE	94V-0						
H	NO	39-01-4062	5559-06P2	6	W/EARS	POSITIVE	94V-2						
	NO	39-01-4066	5559-06P3	6	W/O EAR	POSITIVE	94V-2						
	NO	39-01-4063	5559-06P2-210	6	W/EARS	POSITIVE	94V-0						
	NO	39-01-4067	5559-06P3-210	6	W/O EAR	POSITIVE	94V-0						
	NO	39-01-4072	5559-07P2	7	W/EARS	POSITIVE	94V-2						
	NO	39-01-4076	5559-07P3	7	W/O EAR	POSITIVE	94V-2						
G	NO	39-01-4073	5559-07P2-210	7	W/EARS	POSITIVE	94V-0						
	NO	39-01-4077	5559-07P3-210	7	W/O EAR	POSITIVE	94V-0						
	NO	39-01-4082	5559-08P2	8	W/EARS	POSITIVE	94V-2						
	NO	39-01-4086	5559-08P3	8	W/O EAR	POSITIVE	94V-2						
	NO	39-01-4083	5559-08P2-210	8	W/EARS	POSITIVE	94V-0						
F	NO	39-01-4087	5559-08P3-210	8	W/O EAR	POSITIVE	94V-0						
	NO	39-01-4092	5559-09P2	9	W/EARS	POSITIVE	94V-2						
	NO	39-01-4096	5559-09P3	9	W/O EAR	POSITIVE	94V-2						
	NO	39-01-4093	5559-09P2-210	9	W/EARS	POSITIVE	94V-0						
	NO	39-01-4097	5559-09P3-210	9	W/O EAR	POSITIVE	94V-0						
E	NO	39-01-4102	5559-10P2	10	W/EARS	POSITIVE	94V-2						
	NO	39-01-4106	5559-10P3	10	W/O EAR	POSITIVE	94V-2						
	NO	39-01-4103	5559-10P2-210	10	W/EARS	POSITIVE	94V-0						
	NO	39-01-4107	5559-10P3-210	10	W/O EAR	POSITIVE	94V-0						
	NO	39-01-4112	5559-11P2	11	W/EARS	POSITIVE	94V-2						
	NO	39-01-4116	5559-11P3	11	W/O EAR	POSITIVE	94V-2						
D	NO	39-01-4113	5559-11P2-210	11	W/EARS	POSITIVE	94V-0						
	NO	39-01-4117	5559-11P3-210	11	W/O EAR	POSITIVE	94V-0						
	NO	39-01-4122	5559-12P2	12	W/EARS	POSITIVE	94V-2						
	NO	39-01-4126	5559-12P3	12	W/O EAR	POSITIVE	94V-2						
	NO	39-01-4123	5559-12P2-210	12	W/EARS	POSITIVE	94V-0						
	NO	39-01-4127	5559-12P3-210	12	W/O EAR	POSITIVE	94V-0						

13	12	11	10	9	8	7	6	5	4	3	2	1	
TOOLED	PART NO	ENG NO	CKT SIZE	MOUNTING OPTION	LOCK OPTION	MATERIAL SEE NOTE I	TOOLED	PART NO	ENG NO	CKT SIZE	MOUNTING OPTION	LOCK OPTION	MATERIAL SEE NOTE I
	NO	NO E.D.P.	5559-04P4	4	W/EARS	PASSIVE	94V-2						
	NO	NO E.D.P.	5559-04P5	4	W/O EAR	PASSIVE	94V-2						
	NO	NO E.D.P.	5559-04P4-210	4	W/EARS	PASSIVE	94V-0						
	NO	NO E.D.P.	5559-04P5-210	4	W/O EAR	PASSIVE	94V-0						
I	YES	50-29-1599	5559-05P4-210	5	W/EARS	PASSIVE	94V-0						
	NO	NO E.D.P.	5559-05P5-210	5	W/O EAR	PASSIVE	94V-0						
	NO	NO E.D.P.	5559-05P5-400	5	W/O EAR	PASSIVE	94V-0						
	NO	NO E.D.P.	5559-06P4	6	W/EARS	PASSIVE	94V-2						
	NO	NO E.D.P.	5559-06P5	6	W/O EAR	PASSIVE	94V-2						
H	NO	NO E.D.P.	5559-06P4-210	6	W/EARS	PASSIVE	94V-0						
	NO	NO E.D.P.	5559-06P5-210	6	W/O EAR	PASSIVE	94V-0						
	NO	NO E.D.P.	5559-07P4	7	W/EARS	PASSIVE	94V-2						
	NO	NO E.D.P.	5559-07P5	7	W/O EAR	PASSIVE	94V-2						
	NO	NO E.D.P.	5559-07P4-210	7	W/EARS	PASSIVE	94V-0						
	NO	NO E.D.P.	5559-07P5-210	7	W/O EAR	PASSIVE	94V-0						
G	NO	NO E.D.P.	5559-08P4	8	W/EARS	PASSIVE	94V-2						
	NO	NO E.D.P.	5559-08P5	8	W/O EAR	PASSIVE	94V-2						
	NO	NO E.D.P.	5559-08P4-210	8	W/EARS	PASSIVE	94V-0						
	NO	NO E.D.P.	5559-08P5-210	8	W/O EAR	PASSIVE	94V-0						
F	NO	NO E.D.P.	5559-09P4	9	W/EARS	PASSIVE	94V-2						
	NO	NO E.D.P.	5559-09P5	9	W/O EAR	PASSIVE	94V-2						
	NO	NO E.D.P.	5559-09P4-210	9	W/EARS	PASSIVE	94V-0						
	NO	NO E.D.P.	5559-09P5-210	9	W/O EAR	PASSIVE	94V-0						
	NO	NO E.D.P.	5559-10P4	10	W/EARS	PASSIVE	94V-2						
	NO	NO E.D.P.	5559-10P5	10	W/O EAR	PASSIVE	94V-2						
E	NO	NO E.D.P.	5559-10P4-210	10	W/EARS	PASSIVE	94V-0						
	NO	NO E.D.P.	5559-10P5-210	10	W/O EAR	PASSIVE	94V-0						
	NO	NO E.D.P.	5559-11P4	11	W/EARS	PASSIVE	94V-2						
	NO	NO E.D.P.	5559-11P5	11	W/O EAR	PASSIVE	94V-2						
	NO	NO E.D.P.	5559-11P4-210	11	W/EARS	PASSIVE	94V-0						
D	NO	NO E.D.P.	5559-11P5-210	11	W/O EAR	PASSIVE	94V-0						
	NO	NO E.D.P.	5559-12P4	12	W/EARS	PASSIVE	94V-2						
	NO	NO E.D.P.	5559-12P5	12	W/O EAR	PASSIVE	94V-2						
	NO	NO E.D.P.	5559-12P4-210	12	W/EARS	PASSIVE	94V-0						
	NO	NO E.D.P.	5559-12P5-210	12	W/O EAR	PASSIVE	94V-0						

O = OBSOLETE

LEGEND



SEE SHEET 1 EC NO: UCP2014-0298 DRAWN: NGUYEN 2013/07/22 CHKD: J.BELL 2013/07/22 APPR: F.S.MITH 2013/08/16	QUALITY SYMBOLS ∇=0 ∇=0 ∇=0	GENERAL TOLERANCES (UNLESS SPECIFIED)		DIMENSION STYLE IN/MM		SCALE 1:1	DESIGN UNITS METRIC	THIRD ANGLE PROJECTION													
		<table border="1"> <tr><th>mm</th><th>INCH</th></tr> <tr><td>4 PLACES ± ---</td><td>± ---</td></tr> <tr><td>3 PLACES ± ---</td><td>± .010</td></tr> <tr><td>2 PLACES ± 0.25</td><td>± .015</td></tr> <tr><td>1 PLACE ± 0.38</td><td>± ---</td></tr> <tr><td>0 PLACE ±</td><td>±</td></tr> </table>		mm	INCH	4 PLACES ± ---	± ---	3 PLACES ± ---	± .010	2 PLACES ± 0.25	± .015	1 PLACE ± 0.38	± ---	0 PLACE ±	±	DRAWN BY KSS	DATE 2/19/89	TITLE MINI-FIT JR. SERIES PLUG (SINGLE ROW)			
		mm	INCH																		
		4 PLACES ± ---	± ---																		
3 PLACES ± ---	± .010																				
2 PLACES ± 0.25	± .015																				
1 PLACE ± 0.38	± ---																				
0 PLACE ±	±																				
APPROVED BY FSMITH		DATE 2011/03/10																			
ANGULAR ±1/2° DRAFT WHERE APPLICABLE MUST REMAIN WITHIN DIMENSIONS		MATERIAL NO. SEE CHART					DOCUMENT NO. SD-5559-NLP*	SHEET NO. 3 OF 3													
THIS DRAWING CONTAINS INFORMATION THAT IS PROPRIETARY TO MOLEX INCORPORATED AND SHOULD NOT BE USED WITHOUT WRITTEN PERMISSION																					