

Distributed by:

**JAMECO**<sup>®</sup>  
ELECTRONICS

**www.Jameco.com ♦ 1-800-831-4242**

The content and copyrights of the attached  
material are the property of its owner.

Jameco Part Number 1299876

## FEATURES AND SPECIFICATIONS

### Features and Benefits

- Meets UL 1086 Section 8 Electrical Probe and UL 1863 Section 20 Childs Finger Test
- No exposed leads to meet British Telecom 4000V test
- Contact tips guided within FCC-specified target zone—Positive alignment prevents shorting
- 100% tested for hi-pot and continuity

### Reference Information

Product Specification: PS-42410

Packaging: Tray

UL File No.: E107635

CSA File No.: LR19980

Mates With: WE Co. and FCC 68 plugs

Designed In: Inches

### Electrical

Voltage: 125V

Current: 1.5A

Contact Resistance: 10mΩ max.

Dielectric Withstanding Voltage: 1000V AC rms

Insulation Resistance: 500 MΩ min.

### Mechanical

Durability: 500 cycles min.

### Physical

Housing: Black glass-filled polyester, UL 94V-0

Contact: Phosphor Bronze

Plating: 1.27μm (50μ") min. Gold in contact area and

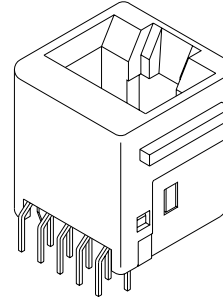
1.27μm (50μ") Tin/Lead on solder tails both over Nickel overall

Operating Temperature: -40 to +80°C

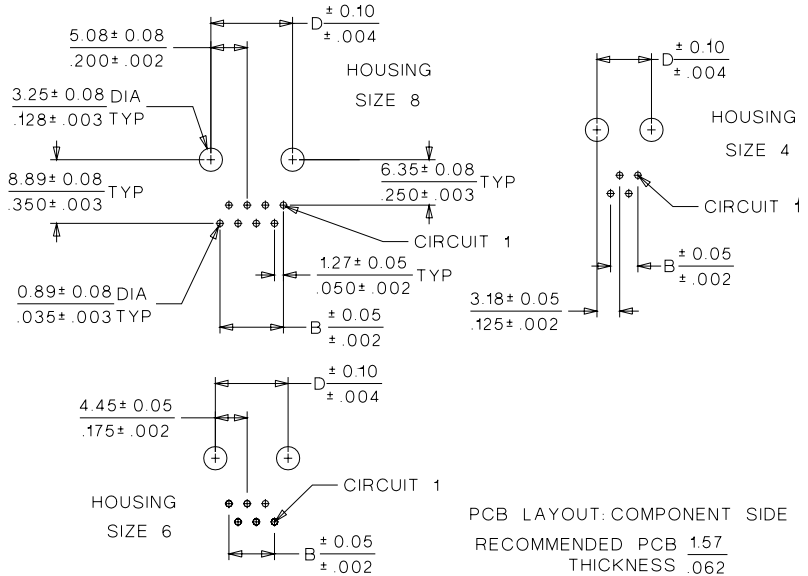
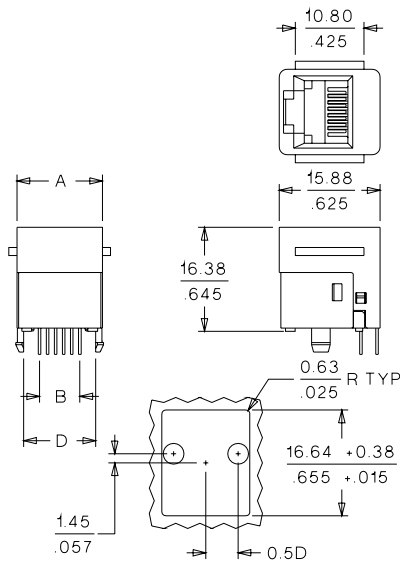
**molex®** Modular Jack

**42410**

**Vertical, Standard Profile  
For .062" and .125" PCB**



## CATALOG DRAWING (FOR REFERENCE ONLY)



## ORDERING INFORMATION AND DIMENSIONS

| Circuits | Loaded Contacts | Order No.   |            |             |            | Dimension    |             |              |
|----------|-----------------|-------------|------------|-------------|------------|--------------|-------------|--------------|
|          |                 | .062" PCB   |            | .125" PCB   |            | A            | B           | D            |
|          |                 | Flush Mount | Flangeless | Flush Mount | Flangeless |              |             |              |
| 6        | 2               | 42410-6456  | 42410-6458 | 42410-6552  | 42410-6554 | 13.46 (.530) | 1.27 (.050) | 10.16 (.400) |
| 6        | 4               | 42410-6312  | 42410-6314 | 42410-6408  | 42410-6410 | 13.46 (.530) | 3.81 (.150) | 10.16 (.400) |
| 6        | 6               | 42410-6168  | 42410-6170 | 42410-6264  | 42410-6266 | 13.46 (.530) | 6.35 (.250) | 10.16 (.400) |
| 8        | 2               | 42410-9176  | 42410-9178 | 42410-9368  | 42410-9370 | 15.49 (.610) | 1.27 (.050) | 11.43 (.450) |
| 8        | 4               | 42410-8888  | 42410-8890 | 42410-9080  | 42410-9082 | 15.49 (.610) | 3.81 (.150) | 11.43 (.450) |
| 8        | 6               | 42410-8600  | 42410-8602 | 42410-8792  | 42410-8794 | 15.49 (.610) | 6.35 (.250) | 11.43 (.450) |
| 8        | 8               | 42410-8312  | 42410-8314 | 42410-8504  | 42410-8506 | 15.49 (.610) | 8.89 (.350) | 11.43 (.450) |

Note: Contact Molex for keying order numbers RJ-45 only



# PRODUCT SPECIFICATION

## VERTICAL MODULAR JACKS

### 1.0 SCOPE

This Product Specification covers the 1.27 mm (.050 inch) centerline (pitch) printed circuit board (PCB) modular jack connector series with selective gold and tin-lead plating.

### 2.0 PRODUCT DESCRIPTION

#### 2.1 PRODUCT NAME AND SERIES NUMBER(S)

Low Profile Vertical Modular Jacks 42410

#### 2.2 DIMENSIONS, MATERIALS, PLATINGS AND MARKINGS

See the appropriate sales drawings (SDA-42410-\*\*\*\*) for information on dimensions, materials, plating and markings.

#### 2.3 SAFETY AGENCY APPROVALS

UL File Number.....E107635

CSA File Number.....LR19980

### 3.0 APPLICABLE DOCUMENTS AND SPECIFICATIONS

FCC Rules and Regulations, Part 68, Subpart F

REA Bulletin 345-81, PE-76; Specification for modular telephone set hardware

ANSI/EIA/TIA-568

IEC-60603-7

UL 1863

MIL-STD-202; General requirements for test specifications

### 4.0 RATINGS

#### 4.1 VOLTAGE

56.5 V DC

150 V<sub>RMS</sub> AC (Ringing voltage only)

#### 4.2 CURRENT

1.5 Amps @ 25°C

#### 4.3 TEMPERATURE

Operating: - 40°C to + 70°C

|                                     |                                                                                 |                                                                       |                                         |
|-------------------------------------|---------------------------------------------------------------------------------|-----------------------------------------------------------------------|-----------------------------------------|
| REVISION:<br><b>C</b>               | ECR/ECN INFORMATION:<br>EC No: <b>UCR2002-0267</b><br>DATE: <b>2001 / 09/19</b> | TITLE:<br><b>PRODUCT SPECIFICATION<br/>VERTICAL<br/>MODULAR JACKS</b> | SHEET No.<br><b>1 of 5</b>              |
| DOCUMENT NUMBER:<br><b>PS-42410</b> | CREATED / REVISED BY:<br><b>MKAMAR 01/09/19</b>                                 | CHECKED BY:<br><b>MKAMAR 01/09/19</b>                                 | APPROVED BY:<br><b>BWIRKUS 01/09/19</b> |



# PRODUCT SPECIFICATION

## 5.0 PERFORMANCE

### 5.1 ELECTRICAL REQUIREMENTS

|  | DESCRIPTION                            | TEST CONDITION                                                                                                                        | REQUIREMENT                                    |
|--|----------------------------------------|---------------------------------------------------------------------------------------------------------------------------------------|------------------------------------------------|
|  | <b>Contact Resistance (Low Level)</b>  | Mate connectors: apply a maximum voltage of <b>20 mV</b> and a current of <b>15 mA</b> .<br>(Measurement locations in Section 7.0)    | <b>10 milliohms</b><br>MAXIMUM<br>[initial]    |
|  | <b>Insulation Resistance</b>           | Unmated connector, mounted to a PCB:<br>apply a voltage of <b>500 VDC</b> between adjacent terminals and between terminals to ground. | <b>500 Megohms</b><br>MINIMUM                  |
|  | <b>Dielectric Withstanding Voltage</b> | Mate connectors: apply a voltage of <b>1000 VAC</b> for <b>1</b> minute between adjacent terminals and between terminals to ground.   | No breakdown;<br>current leakage < <b>5 mA</b> |
|  | <b>Temperature Rise</b>                | Mate connectors: measure the temperature rise at the rated current after:<br><b>96</b> hours                                          | Temperature rise;<br><b>+30°C</b> MAXIMUM      |

|                                     |                                                                                 |                                                                       |                                         |
|-------------------------------------|---------------------------------------------------------------------------------|-----------------------------------------------------------------------|-----------------------------------------|
| REVISION:<br><b>C</b>               | ECR/ECN INFORMATION:<br>EC No: <b>UCR2002-0267</b><br>DATE: <b>2001 / 09/19</b> | TITLE:<br><b>PRODUCT SPECIFICATION<br/>VERTICAL<br/>MODULAR JACKS</b> | SHEET No.<br><b>2 of 5</b>              |
| DOCUMENT NUMBER:<br><b>PS-42410</b> | CREATED / REVISED BY:<br><b>MKAMAR 01/09/19</b>                                 | CHECKED BY:<br><b>MKAMAR 01/09/19</b>                                 | APPROVED BY:<br><b>BWIRKUS 01/09/19</b> |



# PRODUCT SPECIFICATION

## 5.2 MECHANICAL REQUIREMENTS

|  | DESCRIPTION                  | TEST CONDITION                                                                                                         | REQUIREMENT                                                                                                                                   |
|--|------------------------------|------------------------------------------------------------------------------------------------------------------------|-----------------------------------------------------------------------------------------------------------------------------------------------|
|  | <b>Connector Mate Force</b>  | Mate connector at a rate of <b>25 ± 6 mm (1 ± ¼ inch)</b> per minute.<br>(Gage dimensions in Section 7.0)              | <b>22 N (5 lbf)</b><br>MAXIMUM insertion force                                                                                                |
|  | <b>Durability</b>            | Mate connectors up to <b>500</b> cycles at a maximum rate of <b>20</b> cycles per minute prior to Environmental Tests. | <b>10</b> milliohms MAXIMUM<br>(change from initial)                                                                                          |
|  | <b>Vibration (Random)</b>    | Mate connectors and vibrate per MIL-STD-202                                                                            | <b>10</b> milliohms MAXIMUM<br>(change from initial)<br>&<br>Discontinuity < <b>1</b> microsecond                                             |
|  | <b>Plug Retention Force</b>  | Apply an axial pullout force on the plug at a rate of <b>25 ± 6 mm (1 ± ¼ inch)</b> .                                  | <b>58 N (13 lbf)</b><br>MINIMUM retention force                                                                                               |
|  | <b>PCB Separation Forces</b> | Apply a perpendicular static load on the plug at a rate of <b>25 ± 6 mm (1 ± ¼ inch)</b> .                             | <b>4.5 N (1 lbf)</b><br>MINIMUM withdrawal force before solder reflow<br><b>58 N (13 lbf)</b><br>MINIMUM withdrawal force after solder reflow |

|                                     |                                                                                 |                                                                       |                                         |
|-------------------------------------|---------------------------------------------------------------------------------|-----------------------------------------------------------------------|-----------------------------------------|
| REVISION:<br><b>C</b>               | ECR/ECN INFORMATION:<br>EC No: <b>UCR2002-0267</b><br>DATE: <b>2001 / 09/19</b> | TITLE:<br><b>PRODUCT SPECIFICATION<br/>VERTICAL<br/>MODULAR JACKS</b> | SHEET No.<br><b>3 of 5</b>              |
| DOCUMENT NUMBER:<br><b>PS-42410</b> | CREATED / REVISED BY:<br><b>MKAMAR 01/09/19</b>                                 | CHECKED BY:<br><b>MKAMAR 01/09/19</b>                                 | APPROVED BY:<br><b>BWIRKUS 01/09/19</b> |



# PRODUCT SPECIFICATION

## 5.3 ENVIRONMENTAL REQUIREMENTS

| DESCRIPTION                  | TEST CONDITION                                                                                                                                                             | REQUIREMENT                                                                                                                                                                                           |
|------------------------------|----------------------------------------------------------------------------------------------------------------------------------------------------------------------------|-------------------------------------------------------------------------------------------------------------------------------------------------------------------------------------------------------|
| <b>Thermal<br/>(Cycling)</b> | Connectors to be placed in 95% relative humidity. Maximum temperature change is 15°C/hour. Cycle linearly per chart below. Mate connectors; expose to <b>10</b> cycles of: | <b>10</b> milliohms MAXIMUM (change from initial)<br>&<br>Dielectric Withstanding Voltage:<br>No Breakdown at 500 VAC<br>&<br>Insulation Resistance:<br>500 Megohms MINIMUM<br>&<br>Visual: No Damage |
|                              | <u>Temperature °C</u> <u>Duration (Minutes)</u>                                                                                                                            |                                                                                                                                                                                                       |
|                              | <b>30 to 5</b> <b>120</b>                                                                                                                                                  |                                                                                                                                                                                                       |
|                              | <b>5 to 30</b> <b>120</b>                                                                                                                                                  |                                                                                                                                                                                                       |
|                              | <b>Hold at 30</b> <b>240</b>                                                                                                                                               |                                                                                                                                                                                                       |
| <b>30 to 5</b> <b>180</b>    |                                                                                                                                                                            |                                                                                                                                                                                                       |
| <b>Hold at 5</b> <b>180</b>  |                                                                                                                                                                            |                                                                                                                                                                                                       |

|                                     |                                                                                 |                                                                                         |                                         |
|-------------------------------------|---------------------------------------------------------------------------------|-----------------------------------------------------------------------------------------|-----------------------------------------|
| REVISION:<br><b>C</b>               | ECR/ECN INFORMATION:<br>EC No: <b>UCR2002-0267</b><br>DATE: <b>2001 / 09/19</b> | TITLE:<br><b>PRODUCT SPECIFICATION<br/>         VERTICAL<br/>         MODULAR JACKS</b> | SHEET No.<br><b>4 of 5</b>              |
| DOCUMENT NUMBER:<br><b>PS-42410</b> | CREATED / REVISED BY:<br><b>MKAMAR 01/09/19</b>                                 | CHECKED BY:<br><b>MKAMAR 01/09/19</b>                                                   | APPROVED BY:<br><b>BWIRKUS 01/09/19</b> |

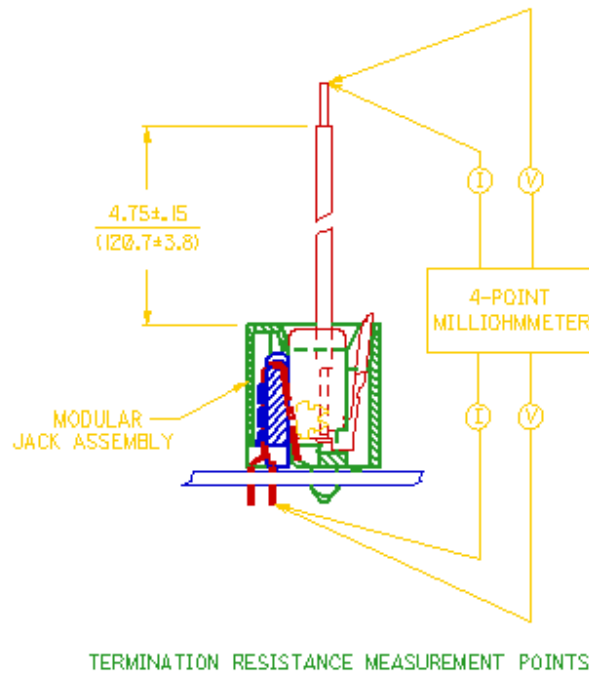


# PRODUCT SPECIFICATION

## 6.0 PACKAGING

Parts shall be packaged to protect against damage during handling, transit and storage.  
See appropriate sales drawings on Sheet 1 for packaging descriptions.

## 7.0 GAGES AND FIXTURES



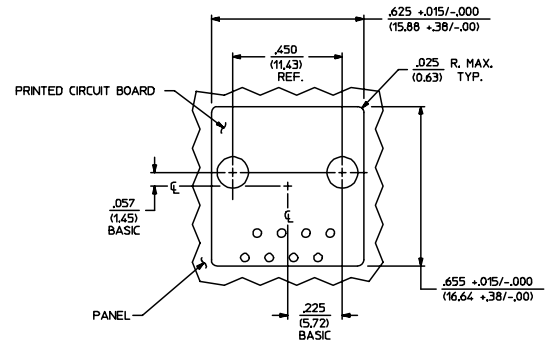
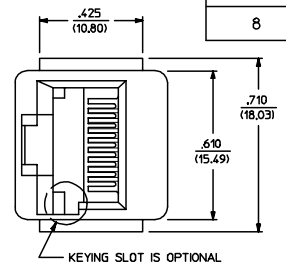
## 8.0 OTHER INFORMATION

|                                     |                                                                                 |                                                                       |                                         |
|-------------------------------------|---------------------------------------------------------------------------------|-----------------------------------------------------------------------|-----------------------------------------|
| REVISION:<br><b>C</b>               | ECR/ECN INFORMATION:<br>EC No: <b>UCR2002-0267</b><br>DATE: <b>2001 / 09/19</b> | TITLE:<br><b>PRODUCT SPECIFICATION<br/>VERTICAL<br/>MODULAR JACKS</b> | SHEET No.<br><b>5 of 5</b>              |
| DOCUMENT NUMBER:<br><b>PS-42410</b> | CREATED / REVISED BY:<br><b>MKAMAR 01/09/19</b>                                 | CHECKED BY:<br><b>MKAMAR 01/09/19</b>                                 | APPROVED BY:<br><b>BWIRKUS 01/09/19</b> |

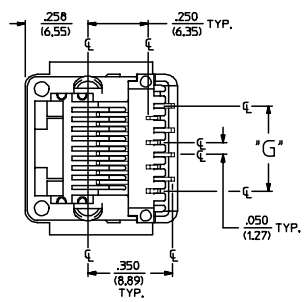
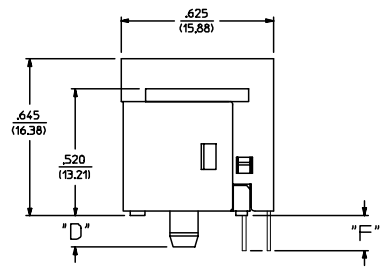
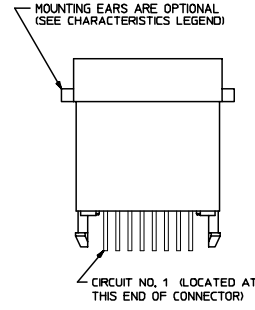
- NOTES:
- MATERIALS: HOUSING PARTS ARE MADE OF POLYESTER, RATED UL 94 V-0, COLOR IS BLACK; TERMINALS ARE .075/(0.38) THICK PHOSPHOR BRONZE.
  - TERMINAL PLATING OPTIONS PER ES-88-\*\*\*\*:
    - A - SELECT GOLD IN CONTACT AREA; 50 MICRONS MIN.
    - \*SELECT TIN IN PC TAIL AREA; 100 MICRONS MIN.
    - WITH OVERALL NICKEL UNDERPLATE; 50 MICRONS MIN.
    - \*THE PRIMARY SHIPPING CARTON WILL BE LABELED "COMPLIANT TO RoHS DIRECTIVE 2002/95/EC AND ELV ANNEX II OF DIRECTIVE 2000/53/EC". CARTONS WITHOUT THIS LABEL MAY CONTAIN PRODUCT WITH TIN-LEAD IN THE PC TAIL.
  - THESE MODULAR JACKS MEET THE PERFORMANCE REQUIREMENTS OF MOLEX PRODUCT SPECIFICATION PS-42410.
  - CONNECTORS ARE TO BE PACKED IN THERMOFORMED TRAYS, PER PACKAGING SPECIFICATION PK-42410-492.
  - ALL JACKS ARE DESIGNED TO BE USED WITH .062/(1.57) OR .125/(3.18) THICK P.C. BOARDS.
  - ALL JACKS CONFORM TO AND ACCEPT PLUGS WHICH CONFORM TO FCC RULES AND REGULATIONS PART 68, SUBPART F, WHEN PLATED WITH 50 MICRONS GOLD.
  - ALL JACKS MUST BE CAPABLE OF FITTING INTO MOLEX GAGE G-42410 (CONNECTOR SIZE 4).
  - SEE SHEETS 1 & 4 FOR CONNECTOR SIZE 4.
  - SEE SHEETS 2 & 4 FOR CONNECTOR SIZE 6.
  - SEE SHEET 4 FOR ASSEMBLY ITEM NUMBERS.
  - THIS MODULAR JACK ASSEMBLY IS ALSO AVAILABLE IN A UL 94V-0 RATED, GLASS-FILLED NYLON. (SEE MOLEX DRAWING SDA-42576)
  - ENGRAVED NUMBERS ON HOUSING BODY ARE FOR HOLDING IDENTIFICATION ONLY. THEY ARE NOT INTENDED FOR ASSEMBLY IDENTIFICATION PURPOSES.
  - ALL UNTOLERANCED DIMENSIONS ARE SHOWN FOR REFERENCE ONLY.

| P.C. BOARD THICKNESS | DIM. "D" (MTG. PEGS) | DIM. "F" (P.C. TAILS)                 |
|----------------------|----------------------|---------------------------------------|
| .062/(1.57)          | .128<br>(3.25)       | .120 +.015/-.025<br>(3.05 +.38/- .63) |
| .125/(3.18)          | .191<br>(4.85)       | .205 +.015/-.025<br>(5.21 +.38/- .63) |

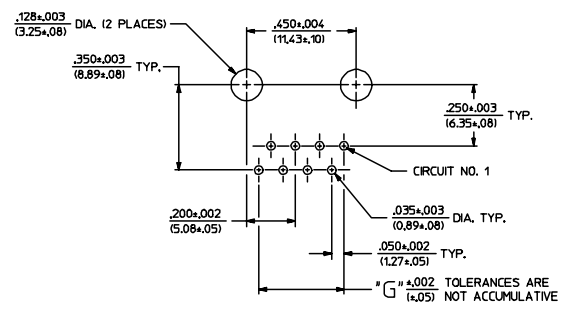
| CONNECTOR SIZE | CIRCUIT SIZE | DIM. "G"       |
|----------------|--------------|----------------|
| 8              | 8            | .350<br>(8.89) |
| 8              | 6            | .250<br>(6.35) |
| 8              | 4            | .150<br>(3.81) |
| 8              | 2            | .050<br>(1.27) |



PANEL CUT-OUT FOR CONNECTOR SIZE 8



SIZE 8 MODULAR JACK LOADED WITH 8 TERMINALS SHOWN ABOVE  
(SEE SHEET 4 FOR PART NUMBER AVAILABILITY)



P.C. BOARD LAYOUT FOR CONNECTOR SIZE 8

|                                                                                                                        |                 |                                       |      |                               |                   |                                                                                                                               |                    |
|------------------------------------------------------------------------------------------------------------------------|-----------------|---------------------------------------|------|-------------------------------|-------------------|-------------------------------------------------------------------------------------------------------------------------------|--------------------|
| SEE SHEET ONE<br>EC NO: UCP2004-667<br>DRAWN:LSCHMIDT 2004/03/03<br>CHKD:LSCHMIDT 2004/03/03<br>APPR:ESMITH 2004/03/03 | QUALITY SYMBOLS | GENERAL TOLERANCES (UNLESS SPECIFIED) |      | SCALE 4:1                     | DESIGN UNITS INCH | THIRD ANGLE PROJECTION                                                                                                        | REVISE ON CAD ONLY |
|                                                                                                                        | DESCRIPTION     | mm                                    | INCH | DIMENSION STYLE IN/MM         |                   | TITLE                                                                                                                         |                    |
|                                                                                                                        | ▽ .0            | 4 PLACES ±                            | ±    | DRAWN BY GLT                  | DATE 1990/10/12   | ASSEMBLY, VERTICAL MODULAR JACKS (CONNECTOR SIZE 8)                                                                           |                    |
|                                                                                                                        | ▽ .0            | 3 PLACES ±                            | ±    | CHECKED BY BAP                | DATE 1990/10/12   | MOLEX INCORPORATED                                                                                                            |                    |
|                                                                                                                        |                 | 2 PLACES ±                            | ±    | APPROVED BY RAS               | DATE 1990/10/12   | MATERIAL NO.                                                                                                                  | DOCUMENT NO.       |
|                                                                                                                        |                 | 1 PLACE ±                             | ±    | DRAFT WHERE APPLICABLE        |                   | SEE SHEET 4 SDA-42410-****                                                                                                    | SHEET NO. 3 OF 4   |
|                                                                                                                        |                 | ANGULAR ±1/2°                         |      | MUST REMAIN WITHIN DIMENSIONS |                   | THIS DRAWING CONTAINS INFORMATION THAT IS PROPRIETARY TO MOLEX INCORPORATED AND SHOULD NOT BE USED WITHOUT WRITTEN PERMISSION |                    |



| SIZE 4 VERTICAL MODJACK ASSEMBLIES |                         |                     |                      |                      |                         |
|------------------------------------|-------------------------|---------------------|----------------------|----------------------|-------------------------|
| PART CHARACTERISTICS               |                         |                     |                      |                      |                         |
| ASSEMBLY ITEM NUMBER               | EXTERNAL CONNECTOR SIZE | NUMBER OF POSITIONS | P.C. BOARD THICKNESS | MOUNTING EARS OPTION | TERMINAL PLATING OPTION |
| 42410-4168                         | 4 POS. BODY             | 4                   | .062/(1.57)          | YES                  | A                       |
| 42410-4170                         | ↑                       | ↑                   | .062/(1.57)          | NO                   | A                       |
| 42410-4264                         | ↓                       | ↓                   | .125/(3.18)          | YES                  | A                       |
| 42410-4266                         | 4 POS. BODY             | 4                   | .125/(3.18)          | NO                   | A                       |
| 42410-4312                         | 4 POS. BODY             | 2                   | .062/(1.57)          | YES                  | A                       |
| 42410-4314                         | ↑                       | ↑                   | .062/(1.57)          | NO                   | A                       |
| 42410-4408                         | ↓                       | ↓                   | .125/(3.18)          | YES                  | A                       |
| 42410-4410                         | 4 POS. BODY             | 2                   | .125/(3.18)          | NO                   | A                       |

| SIZE 6 VERTICAL MODJACK ASSEMBLIES |                         |                     |                      |                      |                         |
|------------------------------------|-------------------------|---------------------|----------------------|----------------------|-------------------------|
| PART CHARACTERISTICS               |                         |                     |                      |                      |                         |
| ASSEMBLY ITEM NUMBER               | EXTERNAL CONNECTOR SIZE | NUMBER OF POSITIONS | P.C. BOARD THICKNESS | MOUNTING EARS OPTION | TERMINAL PLATING OPTION |
| 42410-6168                         | 6 POS. BODY             | 6                   | .062/(1.57)          | YES                  | A                       |
| 42410-6170                         | ↑                       | ↑                   | .062/(1.57)          | NO                   | A                       |
| 42410-6264                         | ↓                       | ↓                   | .125/(3.18)          | YES                  | A                       |
| 42410-6266                         | 6 POS. BODY             | 6                   | .125/(3.18)          | NO                   | A                       |
| 42410-6312                         | 6 POS. BODY             | 4                   | .062/(1.57)          | YES                  | A                       |
| 42410-6314                         | ↑                       | ↑                   | .062/(1.57)          | NO                   | A                       |
| 42410-6320                         | ↑                       | ↑                   | .062/(1.57)          | YES                  | B                       |
| 42410-6408                         | ↓                       | ↓                   | .125/(3.18)          | YES                  | A                       |
| 42410-6410                         | 6 POS. BODY             | 4                   | .125/(3.18)          | NO                   | A                       |
| 42410-6456                         | 6 POS. BODY             | 2                   | .062/(1.57)          | YES                  | A                       |
| 42410-6458                         | ↑                       | ↑                   | .062/(1.57)          | NO                   | A                       |
| 42410-6552                         | ↓                       | ↓                   | .125/(3.18)          | YES                  | A                       |
| 42410-6554                         | 6 POS. BODY             | 2                   | .125/(3.18)          | NO                   | A                       |

| SIZE 8 VERTICAL MODJACK ASSEMBLIES |                         |                     |                      |               |                      |                         |
|------------------------------------|-------------------------|---------------------|----------------------|---------------|----------------------|-------------------------|
| PART CHARACTERISTICS               |                         |                     |                      |               |                      |                         |
| ASSEMBLY ITEM NUMBER               | EXTERNAL CONNECTOR SIZE | NUMBER OF POSITIONS | P.C. BOARD THICKNESS | KEYING OPTION | MOUNTING EARS OPTION | TERMINAL PLATING OPTION |
| 42410-8312                         | 8 POS. BODY             | 8                   | .062/(1.57)          | NO            | YES                  | A                       |
| 42410-8314                         | ↑                       | ↑                   | .062/(1.57)          | NO            | NO                   | A                       |
| 42410-8360                         | ↑                       | ↑                   | .062/(1.57)          | YES           | YES                  | A                       |
| 42410-8362                         | ↑                       | ↑                   | .062/(1.57)          | YES           | NO                   | A                       |
| 42410-8504                         | ↑                       | ↑                   | .125/(3.18)          | NO            | YES                  | A                       |
| 42410-8506                         | ↑                       | ↑                   | .125/(3.18)          | NO            | NO                   | A                       |
| 42410-8552                         | ↓                       | ↓                   | .125/(3.18)          | YES           | YES                  | A                       |
| 42410-8554                         | 8 POS. BODY             | 8                   | .125/(3.18)          | YES           | NO                   | A                       |
| 42410-8600                         | 8 POS. BODY             | 6                   | .062/(1.57)          | NO            | YES                  | A                       |
| 42410-8602                         | ↑                       | ↑                   | .062/(1.57)          | NO            | NO                   | A                       |
| 42410-8648                         | ↑                       | ↑                   | .062/(1.57)          | YES           | YES                  | A                       |
| 42410-8650                         | ↑                       | ↑                   | .062/(1.57)          | YES           | NO                   | A                       |
| 42410-8792                         | ↑                       | ↑                   | .125/(3.18)          | NO            | YES                  | A                       |
| 42410-8794                         | ↑                       | ↑                   | .125/(3.18)          | NO            | NO                   | A                       |
| 42410-8840                         | ↓                       | ↓                   | .125/(3.18)          | YES           | YES                  | A                       |
| 42410-8842                         | 8 POS. BODY             | 6                   | .125/(3.18)          | YES           | NO                   | A                       |
| 42410-8888                         | 8 POS. BODY             | 4                   | .062/(1.57)          | NO            | YES                  | A                       |
| 42410-8890                         | ↑                       | ↑                   | .062/(1.57)          | NO            | NO                   | A                       |
| 42410-8936                         | ↑                       | ↑                   | .062/(1.57)          | YES           | YES                  | A                       |
| 42410-8938                         | ↑                       | ↑                   | .062/(1.57)          | YES           | NO                   | A                       |
| 42410-9080                         | ↑                       | ↑                   | .125/(3.18)          | NO            | YES                  | A                       |
| 42410-9082                         | ↑                       | ↑                   | .125/(3.18)          | NO            | NO                   | A                       |
| 42410-9128                         | ↓                       | ↓                   | .125/(3.18)          | YES           | YES                  | A                       |
| 42410-9130                         | 8 POS. BODY             | 4                   | .125/(3.18)          | YES           | NO                   | A                       |
| 42410-9176                         | 8 POS. BODY             | 2                   | .062/(1.57)          | NO            | YES                  | A                       |
| 42410-9178                         | ↑                       | ↑                   | .062/(1.57)          | NO            | NO                   | A                       |
| 42410-9224                         | ↑                       | ↑                   | .062/(1.57)          | YES           | YES                  | A                       |
| 42410-9226                         | ↑                       | ↑                   | .062/(1.57)          | YES           | NO                   | A                       |
| 42410-9368                         | ↑                       | ↑                   | .125/(3.18)          | NO            | YES                  | A                       |
| 42410-9370                         | ↑                       | ↑                   | .125/(3.18)          | NO            | NO                   | A                       |
| 42410-9416                         | ↓                       | ↓                   | .125/(3.18)          | YES           | YES                  | A                       |
| 42410-9418                         | 8 POS. BODY             | 2                   | .125/(3.18)          | YES           | NO                   | A                       |

| SEE SHEET ONE<br>EC NO. UCP2004-1617<br>DRWNL:LSCHMIDT 2004/03/03<br>CHKCD:LSCHMIDT 2004/03/03<br>APPR:ESMITH 2004/03/03<br>N | QUALITY SYMBOLS<br>▽ 0<br>▽ 0 | GENERAL TOLERANCES (UNLESS SPECIFIED)<br><table border="1"> <tr> <th></th> <th>mm</th> <th>INCH</th> </tr> <tr> <td>4 PLACES</td> <td>± .005</td> <td>± .0005</td> </tr> <tr> <td>3 PLACES</td> <td>± .005</td> <td>± .0005</td> </tr> <tr> <td>2 PLACES</td> <td>± .005</td> <td>± .0005</td> </tr> <tr> <td>1 PLACE</td> <td>± .005</td> <td>± .0005</td> </tr> </table> |                                                                                                            | mm                                               | INCH | 4 PLACES | ± .005 | ± .0005 | 3 PLACES | ± .005 | ± .0005 | 2 PLACES | ± .005 | ± .0005 | 1 PLACE | ± .005 | ± .0005 | SCALE ---<br>DESIGN UNITS INCH<br>DIMENSION STYLE IN/MM | THIRD ANGLE PROJECTION<br>REVISE ON CAD ONLY |
|-------------------------------------------------------------------------------------------------------------------------------|-------------------------------|----------------------------------------------------------------------------------------------------------------------------------------------------------------------------------------------------------------------------------------------------------------------------------------------------------------------------------------------------------------------------|------------------------------------------------------------------------------------------------------------|--------------------------------------------------|------|----------|--------|---------|----------|--------|---------|----------|--------|---------|---------|--------|---------|---------------------------------------------------------|----------------------------------------------|
|                                                                                                                               |                               | mm                                                                                                                                                                                                                                                                                                                                                                         | INCH                                                                                                       |                                                  |      |          |        |         |          |        |         |          |        |         |         |        |         |                                                         |                                              |
|                                                                                                                               | 4 PLACES                      | ± .005                                                                                                                                                                                                                                                                                                                                                                     | ± .0005                                                                                                    |                                                  |      |          |        |         |          |        |         |          |        |         |         |        |         |                                                         |                                              |
|                                                                                                                               | 3 PLACES                      | ± .005                                                                                                                                                                                                                                                                                                                                                                     | ± .0005                                                                                                    |                                                  |      |          |        |         |          |        |         |          |        |         |         |        |         |                                                         |                                              |
| 2 PLACES                                                                                                                      | ± .005                        | ± .0005                                                                                                                                                                                                                                                                                                                                                                    |                                                                                                            |                                                  |      |          |        |         |          |        |         |          |        |         |         |        |         |                                                         |                                              |
| 1 PLACE                                                                                                                       | ± .005                        | ± .0005                                                                                                                                                                                                                                                                                                                                                                    |                                                                                                            |                                                  |      |          |        |         |          |        |         |          |        |         |         |        |         |                                                         |                                              |
| DRAFT WHERE APPLICABLE<br>MUST REMAIN WITHIN DIMENSIONS                                                                       |                               | ANGULAR ±1/2°                                                                                                                                                                                                                                                                                                                                                              | DRAWN BY DATE<br>GLT 1990/10/12<br>CHECKED BY DATE<br>BAP 1990/10/12<br>APPROVED BY DATE<br>RAS 1990/10/12 | TITLE<br><b>ASSEMBLY, VERTICAL MODULAR JACKS</b> |      |          |        |         |          |        |         |          |        |         |         |        |         |                                                         |                                              |
|                                                                                                                               |                               |                                                                                                                                                                                                                                                                                                                                                                            | MATERIAL NO. (DOCUMENT NO.)<br>SEE CHART SDA-42410-****                                                    | SHEET NO.<br>4 OF 4                              |      |          |        |         |          |        |         |          |        |         |         |        |         |                                                         |                                              |
| THIS DRAWING CONTAINS INFORMATION THAT IS PROPRIETARY TO MOLEX INCORPORATED AND SHOULD NOT BE USED WITHOUT WRITTEN PERMISSION |                               |                                                                                                                                                                                                                                                                                                                                                                            |                                                                                                            |                                                  |      |          |        |         |          |        |         |          |        |         |         |        |         |                                                         |                                              |