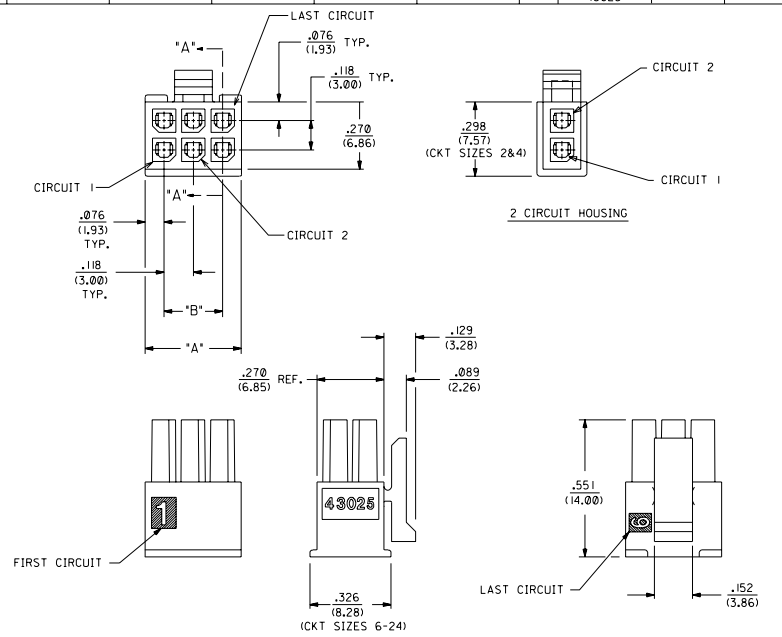
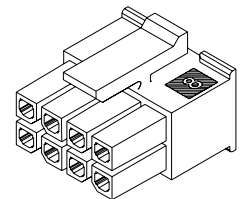


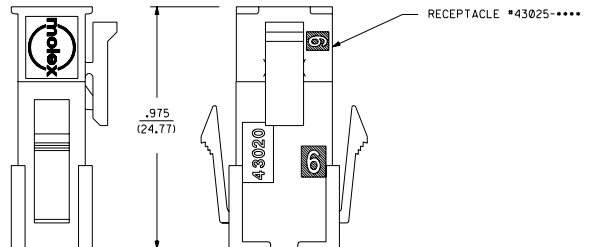
PART CHARACTERISTICS		CKT. NO.	DIM. "A"	DIM. "B"
ASSEMBLY ITEM NUMBER	NUMBER OF POSITION	2	.152/(3.86)	N/A
43025-0200	02	4	.270/(6.85)	.118/(3.00)
43025-0400	04	6	.388/(9.85)	.236/(6.00)
43025-0600	06	8	.506/(12.85)	.354/(9.00)
43025-0800	08	10	.624/(15.85)	.472/(12.00)
43025-1000	10	12	.742/(18.85)	.591/(15.00)
43025-1200	12	14	.860/(21.85)	.709/(18.00)
43025-1400	14	16	.978/(24.85)	.827/(21.00)
43025-1600	16	18	1.096/(27.85)	.945/(24.00)
43025-1800	18	20	1.215/(30.85)	1.063/(27.00)
43025-2000	20	22	1.333/(33.85)	1.181/(30.00)
43025-2200	22	24	1.451/(36.85)	1.299/(33.00)
43025-2400	24			



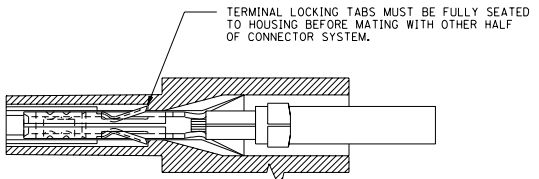
- NOTES:**
- HOUSING MATERIAL: UNFILLED POLYESTER, RATED U.L. 94V-0, COLOR IS BLACK.
  - THIS RECEPTACLE MATES WITH 43020, 43045.
  - THIS RECEPTACLE IS DESIGNED IN METRIC.
  - THIS RECEPTACLE TO BE USED WITH MOLEX FEMALE TERMINAL #43030-\*\*\*\*.
  - SEE SECTION "A"-A" FOR TERMINAL ORIENTATION IN HOUSING.
  - ALL CONNECTORS MUST MEET THE PERFORMANCE REQUIREMENTS OF MOLEX PRODUCT SPECIFICATION \*PS-43045.
  - FOR OVERMOLDING PARAMETERS SEE ENGINEERING SPECIFICATION \*SDES-43025-1000.
  - TOP PULL TABS ARE NOT AVAILABLE ON 2 AND 4 CIRCUIT PARTS.
  - MOLEX RECOMMENDS THE USE OF MICRO-FIT TEST PLUG, SERIES NO. 44242-\*\*\*\* WHENEVER TESTING IS PERFORMED.
  - TEST PLUGS MUST NOT BE USED FOR MAKE OR BREAK UNDER LOAD.



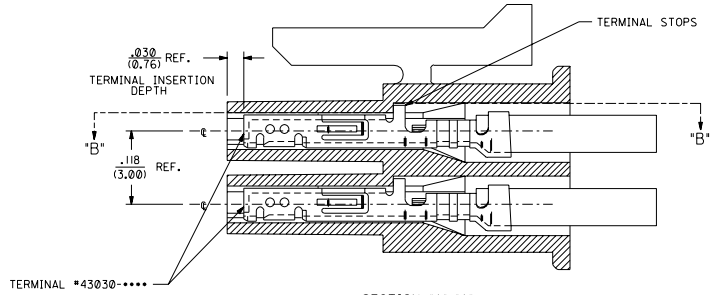
**RECEPTACLE**  
**ISO VIEW**  
**(8 CIRCUIT SHOWN)**  
**(SEE NOTE 9 FOR TESTING)**



**MATED MICRO-FIT CONNECTOR**



**SECTION "B"-B"**  
**(SCALE 10:1)**



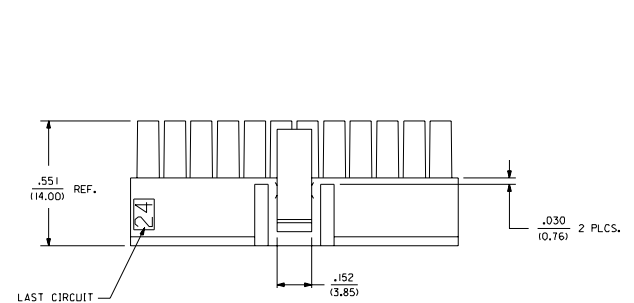
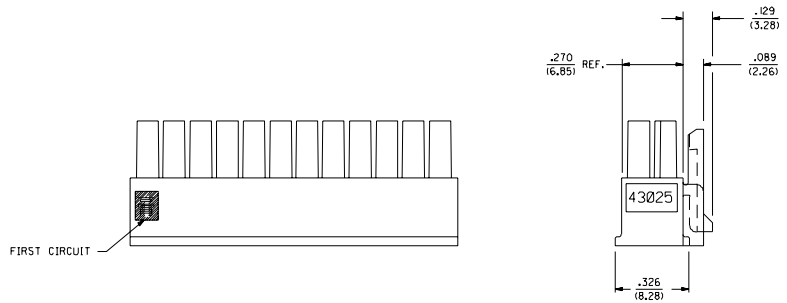
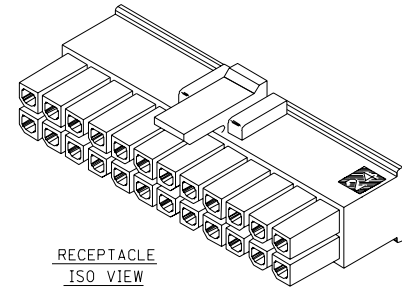
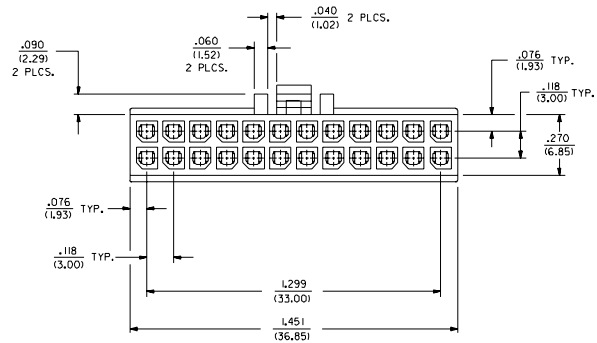
**SECTION "A"-A"**  
**WITH TERMINAL**  
**(SCALE 10:1)**

K I	CORRECT 2 CKT. VIEW UCR2002-0865 4-19-92 MARIGLIS
K	ADD 2&4 CKT DIM UCR2002-0866 7-28-01 BURLESON
J	ADD - 2 CKT UCR2001-0569 12-12-98 MUELLER

DIMENSIONS SHOWN METRIC INCH		REV. = 0		REVISE ONLY ON CAD SYSTEM	
TITLE		DATE		DRAWN BY	
MATERIAL		SCALE		CHECKED BY	
MFG. SH.		REV.		LTR.	
1		G1		H	
K		K		H	
M		M		H	
N		N		H	
O		O		H	
P		P		H	
Q		Q		H	
R		R		H	
S		S		H	
T		T		H	
U		U		H	
V		V		H	
W		W		H	
X		X		H	
Y		Y		H	
Z		Z		H	
AA		AA		H	
AB		AB		H	
AC		AC		H	
AD		AD		H	
AE		AE		H	
AF		AF		H	
AG		AG		H	
AH		AH		H	
AI		AI		H	
AJ		AJ		H	
AK		AK		H	
AL		AL		H	
AM		AM		H	
AN		AN		H	
AO		AO		H	
AP		AP		H	
AQ		AQ		H	
AR		AR		H	
AS		AS		H	
AT		AT		H	
AU		AU		H	
AV		AV		H	
AW		AW		H	
AX		AX		H	
AY		AY		H	
AZ		AZ		H	
BA		BA		H	
BB		BB		H	
BC		BC		H	
BD		BD		H	
BE		BE		H	
BF		BF		H	
BG		BG		H	
BH		BH		H	
BI		BI		H	
BJ		BJ		H	
BK		BK		H	
BL		BL		H	
BM		BM		H	
BN		BN		H	
BO		BO		H	
BP		BP		H	
BQ		BQ		H	
BR		BR		H	
BS		BS		H	
BT		BT		H	
BU		BU		H	
BV		BV		H	
BW		BW		H	
BX		BX		H	
BY		BY		H	
BZ		BZ		H	
CA		CA		H	
CB		CB		H	
CC		CC		H	
CD		CD		H	

20 19 18 17 16 15 14 13 12 11 10 9 8 7 6 5 4 3 2 1

M L K J I H G F E D C B A



FIRST CIRCUIT

SEE SHEET #1 FOR NOTES

G1 SEE SHEET 1

MFG		SIN	REV.	CTR.	REVISIONS
MICRO-FIT (3,0) RECEPTACLE 24 CIRCUIT					
MOLEX INCORPORATED					SHEET NO. 2 DATE 36/12/20
PART NO. 43025-2402					SPEC. NO. SDA-43025-****
DRG. NO. AFG					REV. RE
SCALE 4:1					DATE

20 19 18 17 16 15 14 13 12 11 10 9 8 7 6 5 4 3 2 1

M L K J I H G F E D C B A