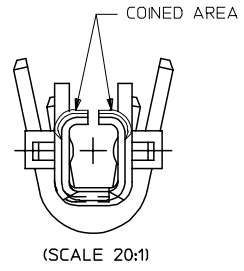
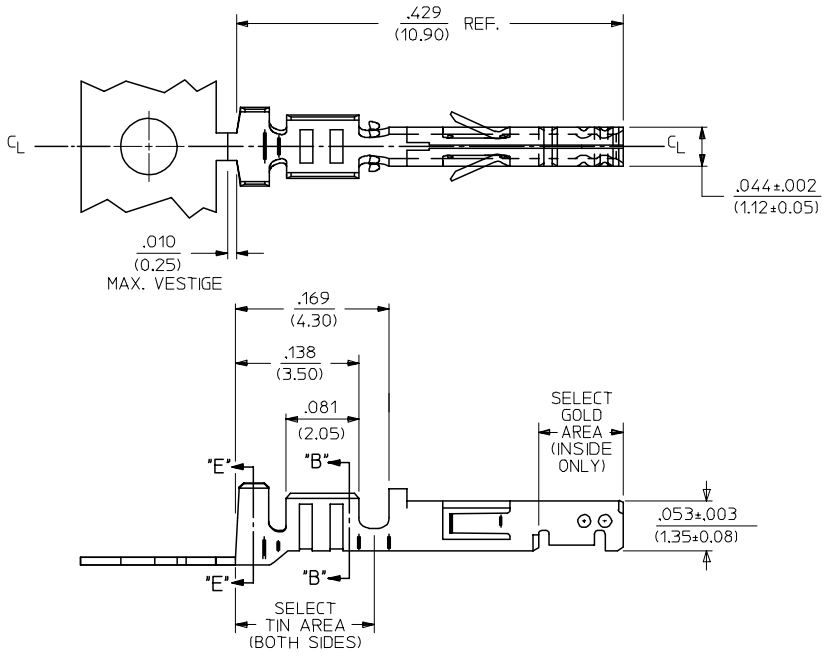
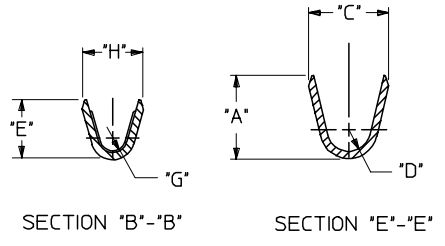


| AWG: | MAX. INSULATION | "A" ±.012 (±0.30) | "C" ±.012 (±0.30) | "D" ±.005 (±0.13) | "E" ±.012 (±0.30) | "G" ±.005 (±0.13) | "H" ±.012 (±0.30) |
|-------|-----------------|-------------------------|-------------------------|-------------------------|-------------------------|-------------------------|-------------------------|
| 20-24 | .073/(1.85) | .090/(2.29) | .100/(2.54) | .030/(0.76) | .075/(1.91) | .025/(0.64) | .082/(2.08) |
| 26-30 | .050/(1.27) | .075/(1.91) | .083/(2.10) | .025/(0.64) | .058/(1.47) | .020/(0.51) | .065/(1.65) |

| MATERIAL NUMBER | PLATING | WIRE SIZE | FORM |
|-----------------|---------|-----------|-------|
| 43030-0001 | A | 20-24 | CHAIN |
| 43030-0002 | B | 20-24 | CHAIN |
| 43030-0003 | C | 20-24 | CHAIN |
| 43030-0004 | A | 26-30 | CHAIN |
| 43030-0005 | B | 26-30 | CHAIN |
| 43030-0006 | C | 26-30 | CHAIN |
| 43030-0007 | A | 20-24 | LOOSE |
| 43030-0008 | B | 20-24 | LOOSE |
| 43030-0009 | C | 20-24 | LOOSE |
| 43030-0010 | A | 26-30 | LOOSE |
| 43030-0011 | B | 26-30 | LOOSE |
| 43030-0012 | C | 26-30 | LOOSE |



NOTES:

- 1) MATERIAL: PHOSPHOR BRONZE ALLOY
- 2) TERMINAL PLATING:
 A - HOT TIN DIP: .000040/(0.00102) MIN.
 B - .000015/(0.00038) MIN. SELECT GOLD
 .000100/(0.00254) MIN. SELECT TIN
 ALL OVER .000050/(0.00127) MIN. NICKEL OVERALL
 C - .000030/(0.00076) MIN. SELECT GOLD
 .000100/(0.00254) MIN. SELECT TIN
 ALL OVER .000050/(0.00127) MIN. NICKEL OVERALL
 * THE PRIMARY SHIPPING CARTON WILL BE LABELED "COMPLIANT TO RoHS DIRECTIVE 2002/95/EC AND ELV ANNEX II OF DIRECTIVE 2000/53/EC." CARTONS WITHOUT THIS LABEL MAY CONTAIN PRODUCT WITH TIN/LEAD IN THE PC TAIL AREA.
 MATERIAL NUMBERS WITH SELECT PLATING ARE POST-PLATED.
- 3) PRODUCT SPECIFICATION : PS-43045, PS-43650, PS-44300-001
- 4) PACKAGING SPECIFICATION: N/A
- 5) TERMINAL FOR USE IN MICRO FIT RECEPTACLE #43025-****.
- 6) FOR TERMINAL ORIENTATION IN RECEPTACLE SEE DRAWING# SDA-43025.
- 7) THIS TERMINAL IS DESIGNED IN METRIC.
- 8) MOLEX RECOMMENDS THE USE OF MICRO-FIT TEST PLUG (SERIES 44242) WHENEVER CONTINUITY TESTING IS PERFORMED. TEST PLUGS MUST NOT BE USED TO MAKE OR BREAK UNDER LOAD. MOLEX DOES NOT RECOMMEND USING STANDARD MATING COMPONENTS (SERIES 43020, 43045, 43640, 43650, OR 43031) FOR HARNESS TESTING PURPOSES.

| | | | | | | | |
|--|-------------------------------|--|---|--|------------------------------------|---------------------|---------------------|
| CHANGE PLATING *A* EC NO: UCP2005-1334 DRAWN/RROLIS 2005/07/14 CHKD:SSOUSEK 2005/07/20 APPR:FSM TH 2005/07/21 M | QUALITY SYMBOLS ▽=0 ▽=0 | GENERAL TOLERANCES (UNLESS SPECIFIED) mm INCH 4 PLACES ±.010 ±.004 3 PLACES ±.010 ±.004 2 PLACES ±.025 ±.010 1 PLACE ±.035 ±.014 ANGULAR ±1/2° | DIMENSION STYLE IN/MM DRAWN BY DATE MUELLER 2002/08/03 CHECKED BY DATE MUELLER 2002/08/03 APPROVED BY DATE MARGULIS 2002/08/03 | SCALE --- DESIGN UNITS METRIC THIRD ANGLE PROJECTION | MICRO-FIT (3.0) FEMALE TERMINAL | MOLEX INCORPORATED | SHEET NO. 1 OF 1 |
| | | DRAFT WHERE APPLICABLE MUST REMAIN WITHIN DIMENSIONS | SEE CHART | MATERIAL NO. SD-43030-**** | DOCUMENT NO. | SHEET NO. 1 OF 1 | |
| | | THIS DRAWING CONTAINS INFORMATION THAT IS PROPRIETARY TO MOLEX INCORPORATED AND SHOULD NOT BE USED WITHOUT WRITTEN PERMISSION | | | | SHEET NO. 1 OF 1 | |
| | | THIS DRAWING CONTAINS INFORMATION THAT IS PROPRIETARY TO MOLEX INCORPORATED AND SHOULD NOT BE USED WITHOUT WRITTEN PERMISSION | | | | SHEET NO. 1 OF 1 | |