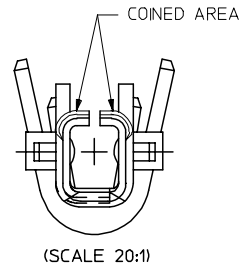
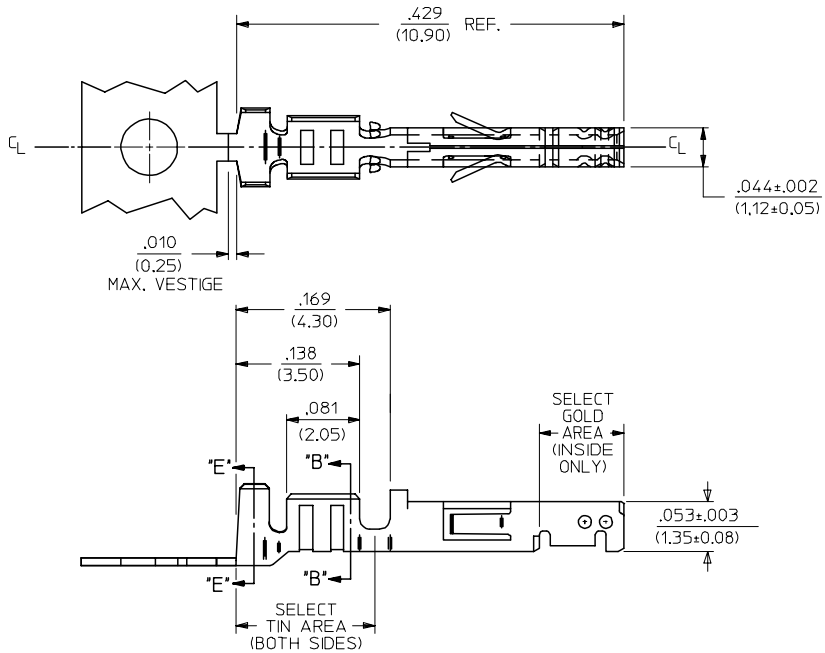
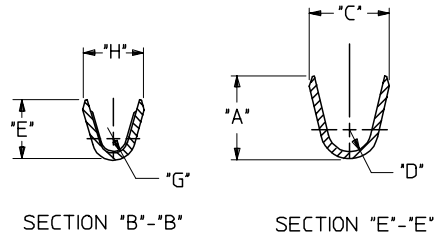


	13	12	11	10	9	8	7	6	5	4	3	2	43030		
J	AWG:	MAX. INSULATION	"A" ±.012 (±0.30)	"C" ±.012 (±0.30)	"D" ±.005 (±0.13)	"E" ±.012 (±0.30)	"G" ±.005 (±0.13)	"H" ±.012 (±0.30)				MATERIAL NUMBER	PLATING	WIRE SIZE	FORM
	20-24	.073/(1.85)	.090/(2.29)	.100/(2.54)	.030/(0.76)	.075/(1.91)	.025/(0.64)	.082/(2.08)				43030-0001	A	20-24	CHAIN
	26-30	.050/(1.27)	.075/(1.91)	.083/(2.10)	.025/(0.64)	.058/(1.47)	.020/(0.51)	.065/(1.65)				43030-0002	B	20-24	CHAIN



- NOTES:
- 1) MATERIAL: PHOSPHOR BRONZE ALLOY
 - 2) TERMINAL PLATING:
 - *A*-.000040/(0.0010) MIN TIN PLATE
 - *B*-.000015/(0.00038)MIN. GOLD PLATE IN SELECT AREA AND .000050/(0.0013) MIN. TIN/LEAD PLATE (90/10) SELECT AREA WITH MATTE FINISH OVER .000050/(0.0013) MIN. NICKEL OVER-ALL.
 - *C*-.000030/(0.00076)MIN. GOLD PLATE IN SELECT AREA AND .000050/(0.0013) MIN. TIN/LEAD PLATE (90/10) SELECT AREA WITH MATTE FINISH OVER .000050/(0.0013) MIN. NICKEL OVER-ALL.
 - 3) PRODUCT SPECIFICATION : PS-43045
 - 4) TERMINAL FOR USE IN MICRO FIT RECEPTACLE #43025-****.
 - 5) FOR TERMINAL ORIENTATION IN RECEPTACLE SEE DRAWING# SDA-43025.
 - 6) THIS TERMINAL IS DESIGNED IN METRIC.
 - 7) MOLEX RECOMMENDS THE USE OF MICRO-FIT TEST PLUG (SERIES 44242) WHENEVER CONTINUITY TESTING IS PERFORMED. TEST PLUGS MUST NOT BE USED TO MAKE OR BREAK UNDER LOAD. MOLEX DOES NOT RECOMMEND USING STANDARD MATING COMPONENTS (SERIES 43020, 43045, 43640, 43650, OR 43031) FOR HARNESS TESTING PURPOSES.

NOTE #7 ADDED FC NO: UCP2004-1424 DRAWN: JERNY 2004/02/24 CHKD: JERNY 2004/02/24 APPR: F SMITH 2004/02/26	QUALITY SYMBOLS ▽ = 0 ▽ = 0	GENERAL TOLERANCES (UNLESS SPECIFIED)		SCALE ---	DESIGN UNITS METRIC	THIRD ANGLE PROJECTION	REVISE ON CAD ONLY
				DIMENSION STYLE IN/MM		TITLE	
				DRAWN BY DATE		MUELLER 2002/08/03	
				CHECKED BY DATE		MUELLER 2002/08/03	
		ANGULAR ±1/2°		APPROVED BY DATE		MARGULIS 2002/08/03	
		DRAFT WHERE APPLICABLE MUST REMAIN WITHIN DIMENSIONS		MATERIAL NO.		DOCUMENT NO.	
				SEE CHART		SD-43030-****	
				SHEET NO.		1 OF 1	

molex MOLEX INCORPORATED