

13

12

11

10

9

8

7

6

5

4

3

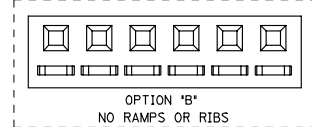
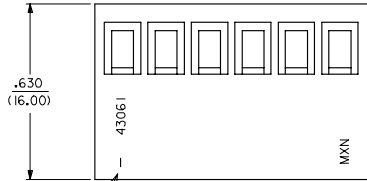
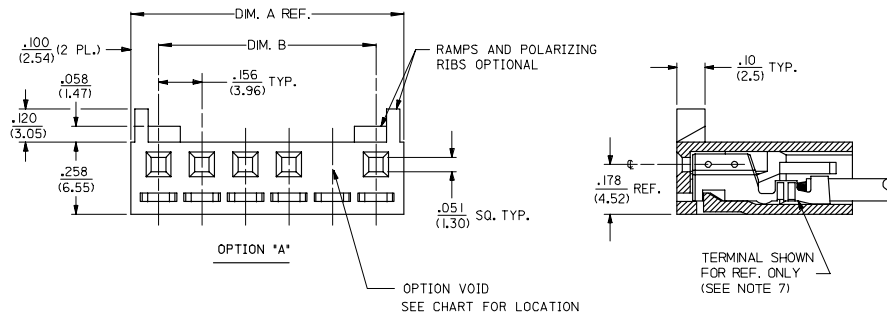
2

1

NOTES:

- 1) MATERIAL: GLASS FILLED POLYESTER, 94V-0
MATERIAL NUMBERS 43061-0*** : COLOR - NATURAL
MATERIAL NUMBERS 43061-1*** : COLOR - BLACK
MATERIAL NUMBERS 43061-2*** : COLOR - BLUE
- 2) FINISH: SEE TERMINAL DWGS.
- 3) FOR ADDITIONAL HOUSING INFORMATION REFER TO DWG. NO. 5195 OR P.S. 5195.
FOR ADDITIONAL TERMINAL INFORMATION REFER TO DWG. NO. 5194 OR 5225 OR P.S. 5194 OR 5225.
- 4) PACKAGING SPECIFICATION: PK-43061-001
- 5) MATES WITH .156/(3.96) CENTER HEADERS AND .045/(1.14) SQUARE PINS.
- 6) CONNECTOR IS DESIGNED FOR USE WITH 18-28 AWG WIRE.
- 7) HOUSING IS DESIGNED FOR USE WITH 5194 (18-22 AWG) AND 5225 (24-28 AWG) TERMINALS.
- 8) THIS PART CONFORMS TO CLASS B REQUIREMENTS OF COSMETIC SPECIFICATION PS-45499-002.

NO. OF CKTS.	DIM. A	DIM. B
2	.357 (9.06)	.156 (3.96)
3	.513 (13.02)	.312 (7.92)
4	.669 (16.98)	.468 (11.88)
5	.824 (20.94)	.624 (15.84)
6	.980 (24.90)	.780 (19.80)
7	1.136 (28.86)	.935 (23.76)
8	1.292 (32.82)	1.091 (27.72)
9	1.448 (36.78)	1.247 (31.68)
10	1.604 (40.74)	1.403 (35.64)
11	1.760 (44.70)	1.560 (39.60)
12	1.916 (48.66)	1.715 (43.56)



2	F3
1	F3
SHT. REV.	

UPDATE NOTES EC NO. UCP2007-1205 2007/01/16 DRAWN BY JORWRIODER 2007/01/18 CHECKED BY CHKCADER 2007/01/18 APPROVED BY APPRESMITH 2007/01/19 REV. DESCRIPTION	QUALITY SYMBOLS ▽=0 ▽=0	GENERAL TOLERANCES (UNLESS SPECIFIED) <table border="1"> <tr> <th></th> <th>mm</th> <th>INCH</th> </tr> <tr> <td>4 PLACES</td> <td>± .10</td> <td>± .004</td> </tr> <tr> <td>3 PLACES</td> <td>± .15</td> <td>± .006</td> </tr> <tr> <td>2 PLACES</td> <td>± .25</td> <td>± .010</td> </tr> <tr> <td>1 PLACE</td> <td>± .35</td> <td>± .014</td> </tr> </table> ANGULAR ±1/2°		mm	INCH	4 PLACES	± .10	± .004	3 PLACES	± .15	± .006	2 PLACES	± .25	± .010	1 PLACE	± .35	± .014	DIMENSION STYLE IN/MM	SCALE 4:1	DESIGN UNITS INCH	THIRD ANGLE PROJECTION
		mm	INCH																		
	4 PLACES	± .10	± .004																		
	3 PLACES	± .15	± .006																		
2 PLACES	± .25	± .010																			
1 PLACE	± .35	± .014																			
DRAFT WHERE APPLICABLE MUST REMAIN WITHIN DIMENSIONS		DRAWN BY ROBERTS	DATE 1991/10/17	TITLE SPOX .156/(3.96) RECEPTACLE HOUSING																	
		CHECKED BY PATEL	DATE 1991/10/17	MATERIAL NO. SEE CHART																	
		APPROVED BY LENZ	DATE 1991/10/17	DOCUMENT NO. SD-43061																	

MOLEX INCORPORATED
 SHEET NO. 1 OF 2

	13	12	11	10	9	8	7	6	5	4	3	2	1					
	HOUSING OPTION: A			HOUSING OPTION: A			HOUSING OPTION: A			HOUSING OPTION: B			HOUSING OPTION: B			HOUSING OPTION: B		
	COLOR WHITE			COLOR BLACK			COLOR BLUE			COLOR WHITE			COLOR BLACK			COLOR BLUE		
J	NO OF CKTS	MATERIAL NO	VOID LOC	NO OF CKTS	MATERIAL NO	VOID LOC	NO OF CKTS	MATERIAL NO	VOID LOC	NO OF CKTS	MATERIAL NO	VOID LOC	NO OF CKTS	MATERIAL NO	VOID LOC	NO OF CKTS	MATERIAL NO	VOID LOC
	2	43061-0002		2	43061-1002		2	43061-2002		2	43061-1013		2	43061-1013		2	43061-2050	
	3	43061-0003		3	43061-1003		3	43061-2003		3	43061-1014		3	43061-1014		3	43061-2051	
	4	43061-0004		4	43061-1004		4	43061-2004		4	43061-1015		4	43061-1015		4	43061-2052	
I	5	43061-0005		5	43061-1005		5	43061-2005		5	43061-1016		5	43061-1016		5	43061-2053	
	6	43061-0006		6	43061-1006		6	43061-2006		6	43061-1017		6	43061-1017		6	43061-2054	
	7	43061-0007		7	43061-1007		7	43061-2007		7	43061-1018		7	43061-1018		7	43061-2055	
	8	43061-0008		8	43061-1008		8	43061-2008		8	43061-1019		8	43061-1019		8	43061-2056	
	9	43061-0009		9	43061-1009		9	43061-2009		9	43061-1020		9	43061-1020		9	43061-2057	
H	10	43061-0010		10	43061-1010		10	43061-2010		10	43061-1021		10	43061-1021		10	43061-2058	
	11	43061-0011		11	43061-1011		11	43061-2011		11	43061-1022		11	43061-1022		11	43061-2059	
	12	43061-0012		12	43061-1012		12	43061-2012		12	43061-1023		12	43061-1023		12	43061-2060	
	5	43061-0030	3	5	43061-1030	3	7	43061-2013	3,4,6									
	7	43061-0031	4	7	43061-1031	4	7	43061-2014	3,6									
G	9	43061-0032	5	9	43061-1032	5												
	8	43061-0033	7	8	43061-1033	7												
	9	43061-0034	7	9	43061-1034	7												
	5	43061-0035	4	5	43061-1035	4												
F	8	43061-0036	2															

SEE SHEET ONE EC NO. UCP2007-1205 DRAWN BY: J. J. BROWN CHECKED BY: J. J. BROWN APPROVED BY: J. J. BROWN DATE: 2007/01/18 DATE: 2007/01/19 DATE: 2007/01/19	QUALITY SYMBOLS	GENERAL TOLERANCES (UNLESS SPECIFIED)	DIMENSION STYLE	SCALE	DESIGN UNITS	THIRD ANGLE PROJECTION
	▽=0	mm INCH	IN/MM	4:1	INCH	
	▽=0	4 PLACES ± --- ± ---	DRAWN BY DATE	TITLE		
		3 PLACES ± --- ± ---	ROBERTS 1991/11/06	SPOX .156/(3.96) RECEPTACLE HOUSING		
	2 PLACES ± --- ± ---	CHECKED BY DATE	MATERIAL NO. DOCUMENT NO.			
	1 PLACE ± --- ± ---	PATEL 1991/11/06	SD-43061			
	ANGULAR ±1/2°	APPROVED BY DATE	SHEET NO. 2 OF 2			
		LENZ 1991/11/06	THIS DRAWING CONTAINS INFORMATION THAT IS PROPRIETARY TO MOLEX INCORPORATED AND SHOULD NOT BE USED WITHOUT WRITTEN PERMISSION			

tb_frame_C_P_ME_T
Rev. E 2006/04/15