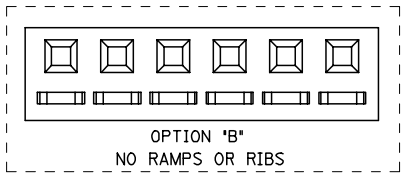
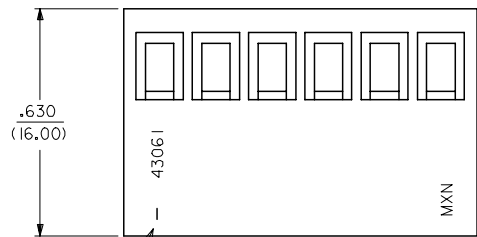
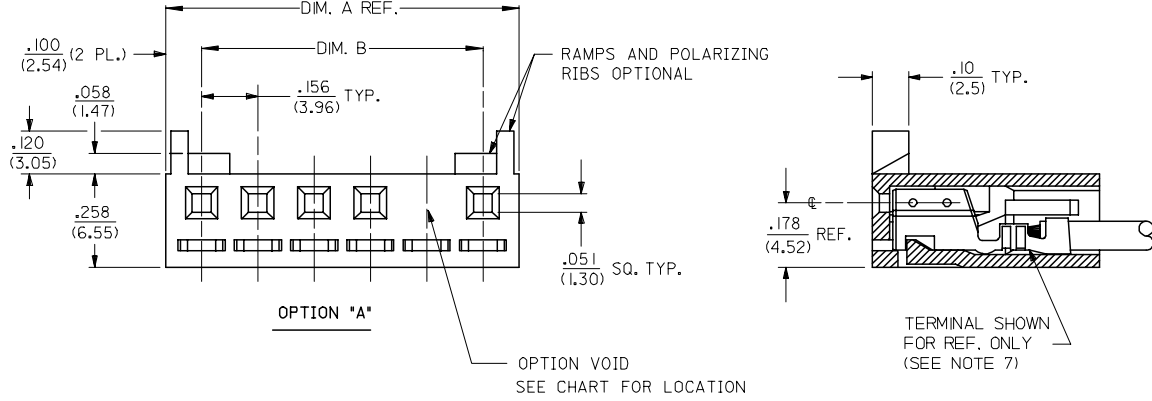


NO. OF CKTS.	DIM. A	DIM. B
2	.357 (9.06)	.156 (3.96)
3	.513 (13.02)	.312 (7.92)
4	.669 (16.98)	.468 (11.88)
5	.824 (20.94)	.624 (15.84)
6	.980 (24.90)	.780 (19.80)
7	1.136 (28.86)	.935 (23.76)
8	1.292 (32.82)	1.091 (27.72)
9	1.448 (36.78)	1.247 (31.68)
10	1.604 (40.74)	1.403 (35.64)
11	1.760 (44.70)	1.560 (39.60)
12	1.916 (48.66)	1.715 (43.56)

NOTES:

- 1) MATERIAL: GLASS FILLED POLYESTER, 94V-0
MATERIAL NUMBERS 43061-0*** : COLOR - NATURAL
MATERIAL NUMBERS 43061-1*** : COLOR - BLACK
MATERIAL NUMBERS 43061-2*** : COLOR - BLUE
- 2) FINISH: SEE TERMINAL DWGS.
- 3) FOR ADDITIONAL HOUSING INFORMATION REFER TO DWG. NO. 5195 OR P.S. 5195.
FOR ADDITIONAL TERMINAL INFORMATION REFER TO DWG. NO. 5194 OR 5225, OR P.S. 5194 OR 5225.
- 4) PACKAGING SPECIFICATION: PK-43061-001
- 5) MATES WITH .156/(3.96) CENTER HEADERS AND .045/(1.14) SQUARE PINS.
- 6) CONNECTOR IS DESIGNED FOR USE WITH 18-28 AWG WIRE.
- 7) HOUSING IS DESIGNED FOR USE WITH 5194 (18-22 AWG) AND 5225 (24-28 AWG) TERMINALS.
- 8) THIS PART CONFORMS TO CLASS B REQUIREMENTS OF COSMETIC SPECIFICATION PS-45499-002.



2	F3
1	F3
SHT. REV.	

UPDATE NOTES EC NO: UCP2007-1205 DRAWN: P. DDER 2007/01/16 CHKD: ADERR 2007/01/18 APPR: FSM TH 2007/01/19 REV. DESCRIPTION	QUALITY SYMBOLS ▽=0 ▽=0	GENERAL TOLERANCES (UNLESS SPECIFIED) <table border="1"> <tr> <th></th> <th>mm</th> <th>INCH</th> </tr> <tr> <td>4 PLACES</td> <td>± .10</td> <td>± .004</td> </tr> <tr> <td>3 PLACES</td> <td>± .15</td> <td>± .010</td> </tr> <tr> <td>2 PLACES</td> <td>± 0.25</td> <td>± .014</td> </tr> <tr> <td>1 PLACE</td> <td>± 0.35</td> <td>± .014</td> </tr> </table> ANGULAR ±1/2°		mm	INCH	4 PLACES	± .10	± .004	3 PLACES	± .15	± .010	2 PLACES	± 0.25	± .014	1 PLACE	± 0.35	± .014	DIMENSION STYLE IN/MM	SCALE 4:1	DESIGN UNITS INCH	THIRD ANGLE PROJECTION
		mm	INCH																		
	4 PLACES	± .10	± .004																		
	3 PLACES	± .15	± .010																		
2 PLACES	± 0.25	± .014																			
1 PLACE	± 0.35	± .014																			
DRAWN BY ROBERTS	DATE 1991/10/17	CHECKED BY PATEL	DATE 1991/10/17	TITLE SPOX .156/(3.96) RECEPTACLE HOUSING																	
APPROVED BY LENZ	DATE 1991/10/17	MATERIAL NO. SEE CHART			MOLEX INCORPORATED																
DRAFT WHERE APPLICABLE MUST REMAIN WITHIN DIMENSIONS			SIZE C	DOCUMENT NO. SD-43061		SHEET NO. 1 OF 2															

13			12			11			10			9			8			7			6			5			4			3			2			1		
HOUSING OPTION: A						HOUSING OPTION: A						HOUSING OPTION: A						HOUSING OPTION: B						HOUSING OPTION: B						HOUSING OPTION: B								
COLOR WHITE			COLOR BLACK			COLOR BLUE			COLOR WHITE			COLOR BLACK			COLOR BLUE			COLOR WHITE			COLOR BLACK			COLOR BLUE			COLOR WHITE			COLOR BLACK			COLOR BLUE					
NO. OF CKTS	MATERIAL NO	VOID LOC	NO. OF CKTS	MATERIAL NO	VOID LOC	NO. OF CKTS	MATERIAL NO	VOID LOC	NO. OF CKTS	MATERIAL NO	VOID LOC	NO. OF CKTS	MATERIAL NO	VOID LOC	NO. OF CKTS	MATERIAL NO	VOID LOC	NO. OF CKTS	MATERIAL NO	VOID LOC	NO. OF CKTS	MATERIAL NO	VOID LOC	NO. OF CKTS	MATERIAL NO	VOID LOC	NO. OF CKTS	MATERIAL NO	VOID LOC	NO. OF CKTS	MATERIAL NO	VOID LOC						
	2	4306 I-0002		2	4306 I-1002		2	4306 I-2002		2	4306 I-0013		2	4306 I-1013		2	4306 I-2050		2	4306 I-0014		2	4306 I-1014		2	4306 I-2051		2	4306 I-0015		2	4306 I-1015		2	4306 I-2052			
	3	4306 I-0003		3	4306 I-1003		3	4306 I-2003		3	4306 I-0016		3	4306 I-1016		3	4306 I-2053		3	4306 I-0017		3	4306 I-1017		3	4306 I-2054		3	4306 I-0018		3	4306 I-1018		3	4306 I-2055			
	4	4306 I-0004		4	4306 I-1004		4	4306 I-2004		4	4306 I-0019		4	4306 I-1019		4	4306 I-2056		4	4306 I-0020		4	4306 I-1020		4	4306 I-2057		4	4306 I-0021		4	4306 I-1021		4	4306 I-2058			
	5	4306 I-0005		5	4306 I-1005		5	4306 I-2005		5	4306 I-0022		5	4306 I-1022		5	4306 I-2059		5	4306 I-0023		5	4306 I-1023		5	4306 I-2060		5			5			5				
	6	4306 I-0006		6	4306 I-1006		6	4306 I-2006		6			6			6			6			6			6			6				6			6			
	7	4306 I-0007		7	4306 I-1007		7	4306 I-2007		7			7			7			7			7			7			7				7			7			
	8	4306 I-0008		8	4306 I-1008		8	4306 I-2008		8			8			8			8			8			8			8				8			8			
	9	4306 I-0009		9	4306 I-1009		9	4306 I-2009		9			9			9			9			9			9			9				9			9			
	10	4306 I-0010		10	4306 I-1010		10	4306 I-2010		10			10			10			10			10			10			10				10			10			
	11	4306 I-0011		11	4306 I-1011		11	4306 I-2011		11			11			11			11			11			11			11				11			11			
	12	4306 I-0012		12	4306 I-1012		12	4306 I-2012		12			12			12			12			12			12			12				12			12			
	5	4306 I-0030	3	5	4306 I-1030	3	5	4306 I-2013	3,4,6	5			5			5			5			5			5			5				5			5			
	7	4306 I-0031	4	7	4306 I-1031	4	7	4306 I-2014	3,6	7			7			7			7			7			7			7				7			7			
	9	4306 I-0032	5	9	4306 I-1032	5				9			9			9			9			9			9			9				9			9			
	8	4306 I-0033	7	8	4306 I-1033	7				8			8			8			8			8			8			8				8			8			
	9	4306 I-0034	7	9	4306 I-1034	7				9			9			9			9			9			9			9				9			9			
	5	4306 I-0035	4	5	4306 I-1035	4				5			5			5			5			5			5			5				5			5			
	8	4306 I-0036	2																																			

E
D
C
B
A

SEE SHEET ONE EC NO: UCP2007-1205 DRAWN BY: JDDER 2007/01/16 CHKD: ADERR 2007/01/18 APPR: FSM TH 2007/01/19 REV DESCRIPTION	QUALITY SYMBOLS	GENERAL TOLERANCES (UNLESS SPECIFIED) <table border="1"> <tr><td></td><td>mm</td><td>INCH</td></tr> <tr><td>4 PLACES</td><td>± ---</td><td>± ---</td></tr> <tr><td>3 PLACES</td><td>± ---</td><td>± ---</td></tr> <tr><td>2 PLACES</td><td>± ---</td><td>± ---</td></tr> <tr><td>1 PLACE</td><td>± ---</td><td>± ---</td></tr> </table> ANGULAR ±1/2°		mm	INCH	4 PLACES	± ---	± ---	3 PLACES	± ---	± ---	2 PLACES	± ---	± ---	1 PLACE	± ---	± ---	DIMENSION STYLE	SCALE	DESIGN UNITS	THIRD ANGLE PROJECTION
			mm	INCH																	
	4 PLACES		± ---	± ---																	
	3 PLACES		± ---	± ---																	
2 PLACES	± ---	± ---																			
1 PLACE	± ---	± ---																			
	IN/MM	4:1	INCH																		