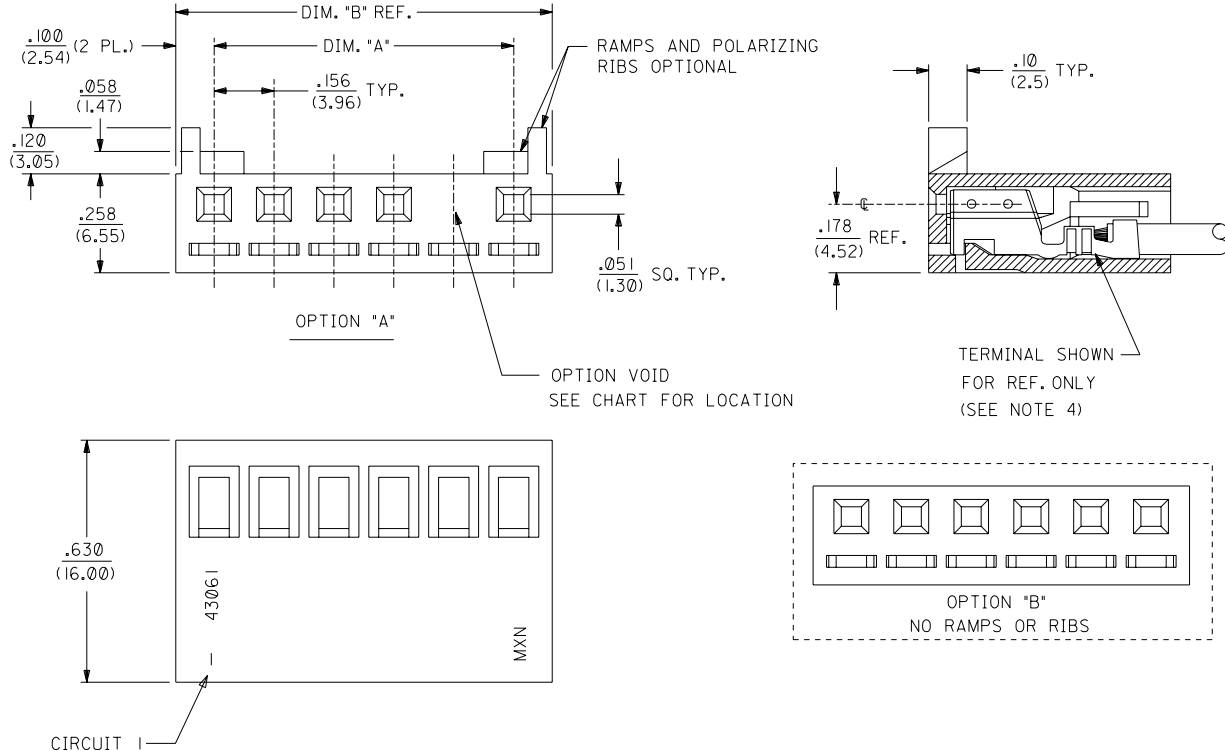


NOTES

- 1) MATERIAL: GLASS FILLED POLYESTER, 94V-0.  
 MATERIAL NUMBERS 43061-0\*\*\* : COLOR - NATURAL  
 MATERIAL NUMBERS 43061-1\*\*\* : COLOR - BLACK  
 MATERIAL NUMBERS 43061-2\*\*\* : COLOR - BLUE
- 2) MATES WITH .156/(3.96) CENTER HEADERS AND .045/(1.14) SQUARE PINS.
- 3) CONNECTOR IS DESIGNED FOR USE WITH 18-28 A.W.G. WIRE.
- 4) HOUSING IS DESIGNED FOR USE WITH 5194 (18-22 AWG) AND 5225 (24-28 AWG) TERMINALS.
- 5) FOR ADDITIONAL HOUSING INFORMATION REFER TO DWG. NO. 5195 OR P.S. 5195.  
 FOR ADDITIONAL TERMINAL INFORMATION REFER TO DWG. NO. 5194 OR 5225,  
 OR P.S. 5194 OR 5225.

NO. OF CKTS.	DIM. "A"	DIM. "B"
2	.156 (3.96)	.357 (9.06)
3	.312 (7.92)	.513 (13.02)
4	.468 (11.88)	.669 (16.98)
5	.624 (15.84)	.824 (20.94)
6	.780 (19.80)	.980 (24.90)
7	.935 (23.76)	1.136 (28.86)
8	1.091 (27.72)	1.292 (32.82)
9	1.247 (31.68)	1.448 (36.78)
10	1.403 (35.64)	1.604 (40.74)
11	1.560 (39.60)	1.760 (44.70)
12	1.715 (43.56)	1.916 (48.66)



43061

2	F2
1	F2
MFG. SH. REV.	

DIMENSIONS SHOWN (METRIC) INCH UNLESS OTHERWISE SPECIFIED TOLERANCES: ANGULAR ± 1/2°		▽ = 0 ▼ = 0 REVISE ONLY ON CAD SYSTEM													
<table border="1"> <thead> <tr> <th></th> <th>INCH</th> <th>METRIC</th> </tr> </thead> <tbody> <tr> <td>3 PLACE</td> <td>± .010</td> <td>---</td> </tr> <tr> <td>2 PLACE</td> <td>± .014</td> <td>± 0.25</td> </tr> <tr> <td>1 PLACE</td> <td>---</td> <td>± 0.35</td> </tr> </tbody> </table>			INCH	METRIC	3 PLACE	± .010	---	2 PLACE	± .014	± 0.25	1 PLACE	---	± 0.35	TITLE SPOX .156/(3.96) RECEPTACLE HOUSING	
	INCH	METRIC													
3 PLACE	± .010	---													
2 PLACE	± .014	± 0.25													
1 PLACE	---	± 0.35													
DRAFT WHERE APPLICABLE MUST REMAIN WITHIN DIMENSIONS		MOLEX INCORPORATED SHEET NO. DATE LITSE, ILL. 60532 U.S.A. 1 OF 2 10/17/91													
DRWG. BY: ROBERTS CHK'D. BY: PATEL APP'D. BY: LENZ SCALE: 4:1		PART NO. SEE CHART SD-43061													
L.T.R. REVISIONS L.T.R. REVISIONS		FILE NAME: S43061X1 THIS DRAWING CONTAINS INFORMATION THAT IS PROPRIETARY TO MOLEX INC. AND SHOULD NOT BE USED WITHOUT WRITTEN PERMISSION. DIV. CP													