

Distributed by:

JAMECO[®]
ELECTRONICS

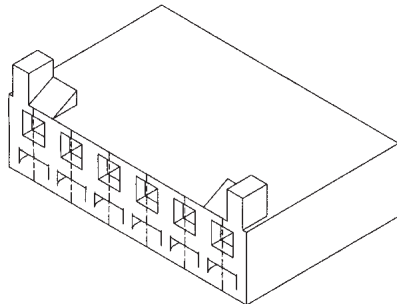
www.Jameco.com ♦ 1-800-831-4242

The content and copyrights of the attached
material are the property of its owner.

Jameco Part Number 1300401

3.96mm (.156") Pitch SPOX™ Housing

43061



Features and Benefits

- Sizes 2 to 12 circuits
- Ramp and ribs provide 180° and side-to-side polarization
- Housing option A provides passive retention to headers with friction lock backwalls
- Integral housing latch eliminates potential for terminal back-out due to damaged locking tangs
- Spring box terminal design offers 4 points of contact; this interconnect system is recommended for severe environmental and high vibration applications

Reference Information

Product Specification: PS-5194/5225
 UL File No.: E29179
 CSA File No.: LR19980
 TUV File No.: R75108
 Mates With: Molex KK 3.96mm (.156") pitch header or 1.14mm (.045") pins
 Use With: 5194 and 5225
 Designed In: Inches

Electrical

Voltage: 250V AC max.
 Current: Phosphor Bronze—7.0A max.
 Brass—5.0A max.
 Contact Resistance: 10 milliohms max.
 Dielectric Withstanding Voltage: 1500V AC

Physical

Housing: White polyester, UL 94V-0
 Contact: Brass or Phosphor Bronze
 Operating Temperature: 0 to +75°C

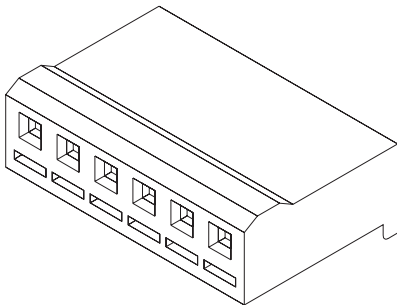
Circuits	Order No.	
	With Ramps and Ribs	Without Ramps and Ribs
2	43061-0002	43061-0013
3	43061-0003	43061-0014
4	43061-0004	43061-0015
5	43061-0005	43061-0016
6	43061-0006	43061-0017
7	43061-0007	43061-0018

Circuits	Order No.	
	With Ramps and Ribs	Without Ramps and Ribs
8	43061-0008	43061-0019
9	43061-0009	43061-0020
10	43061-0010	43061-0021
11	43061-0011	43061-0022
12	43061-0012	43061-0023

www.molex.com/product/kk/kk.html

3.96mm (.156") Pitch SPOX™ Crimp Terminal Housing

5195-N



Features and Benefits

- Sizes 2 to 12 circuits
- With locking ramp
- Molded-in locking arm for terminal

Reference Information

Packaging: Bag
 UL File No.: E29179
 CSA File No.: LR19980
 Mates With: 5271-NA, 5272-NA, 5273-NA, 5274-NA and 5096-NC headers
 Use With: 5194/5225
 Designed In: Millimeters

Electrical

Voltage: 250V
 Current: 5194—7.0A
 5225—4.0A
 Contact Resistance: 10 milliohms max.
 Dielectric Withstanding Voltage: 1500V AC/1 min.
 Insulation Resistance: 1000 Megohms min.

Physical

Housing: 6/6 nylon, UL 94V-2
 Operating Temperature: -40 to +105°C

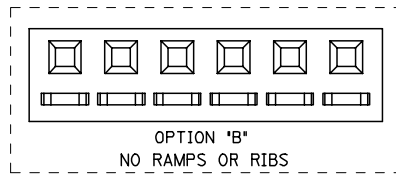
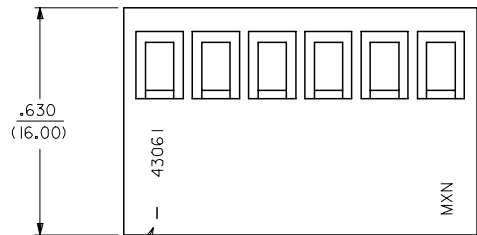
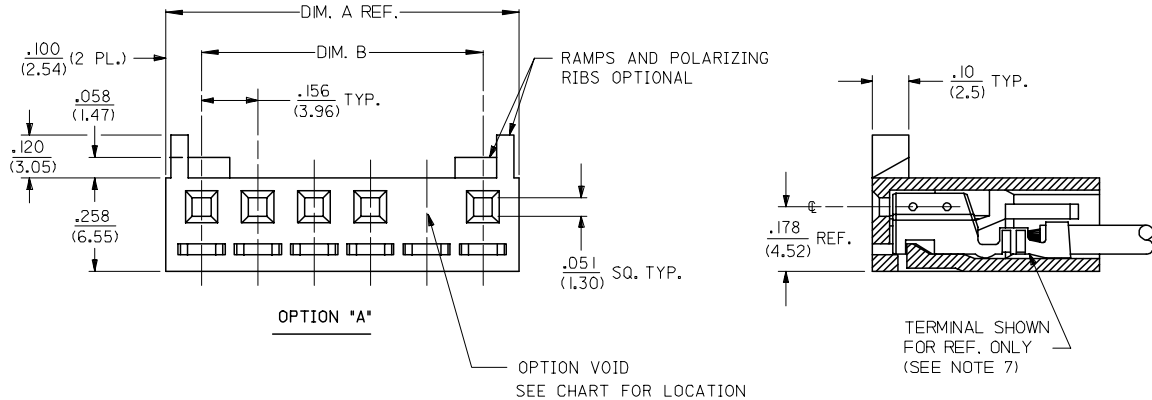
Circuits	Order No.
2	09-50-1021
3	09-50-1031
4	09-50-1041
5	09-50-1051
6	09-50-1061
7	09-50-1071

Circuits	Order No.
8	09-50-1081
9	09-50-1091
10	09-50-1101
11	09-50-1111
12	09-50-1121

NO. OF CKTS.	DIM. A	DIM. B
2	.357 (9.06)	.156 (3.96)
3	.513 (13.02)	.312 (7.92)
4	.669 (16.98)	.468 (11.88)
5	.824 (20.94)	.624 (15.84)
6	.980 (24.90)	.780 (19.80)
7	1.136 (28.86)	.935 (23.76)
8	1.292 (32.82)	1.091 (27.72)
9	1.448 (36.78)	1.247 (31.68)
10	1.604 (40.74)	1.403 (35.64)
11	1.760 (44.70)	1.560 (39.60)
12	1.916 (48.66)	1.715 (43.56)

NOTES:

- 1) MATERIAL: GLASS FILLED POLYESTER, 94V-0
MATERIAL NUMBERS 43061-0*** : COLOR - NATURAL
MATERIAL NUMBERS 43061-1*** : COLOR - BLACK
MATERIAL NUMBERS 43061-2*** : COLOR - BLUE
- 2) FINISH: SEE TERMINAL DWGS.
- 3) FOR ADDITIONAL HOUSING INFORMATION REFER TO DWG. NO. 5195 OR P.S. 5195.
FOR ADDITIONAL TERMINAL INFORMATION REFER TO DWG. NO. 5194 OR 5225, OR P.S. 5194 OR 5225.
- 4) PACKAGING SPECIFICATION: PK-43061-001
- 5) MATES WITH .156/(3.96) CENTER HEADERS AND .045/(1.14) SQUARE PINS.
- 6) CONNECTOR IS DESIGNED FOR USE WITH 18-28 AWG WIRE.
- 7) HOUSING IS DESIGNED FOR USE WITH 5194 (18-22 AWG) AND 5225 (24-28 AWG) TERMINALS.
- 8) THIS PART CONFORMS TO CLASS B REQUIREMENTS OF COSMETIC SPECIFICATION PS-45499-002.



CIRCUIT 1

2	F3
1	F3
SHT. REV.	

UPDATE NOTES EC NO: UCP2007-1205 DRAWN: P. DDER 2007/01/16 CHKD: ADERR 2007/01/18 APPR: FSM TH 2007/01/19	QUALITY SYMBOLS ▽=0 ▽=0	GENERAL TOLERANCES (UNLESS SPECIFIED)		DIMENSION STYLE IN/MM		SCALE 4:1	DESIGN UNITS INCH	THIRD ANGLE PROJECTION		
		4 PLACES ± --- ± ---	mm	INCH	DRAWN BY	DATE	SPOX .156/(3.96) RECEPTACLE HOUSING			
		3 PLACES ± --- ± .010			ROBERTS	1991/10/17				
		2 PLACES ± 0.25 ± .014			CHECKED BY	DATE	MOLEX INCORPORATED			
1 PLACE ± 0.35 ± ---			PATEL	1991/10/17						
ANGULAR ±1/2°		DRAFT WHERE APPLICABLE MUST REMAIN WITHIN DIMENSIONS		APPROVED BY LENZ		DATE 1991/10/17	MATERIAL NO. SD-43061		DOCUMENT NO. SD-43061	SHEET NO. 1 OF 2
THIS DRAWING CONTAINS INFORMATION THAT IS PROPRIETARY TO MOLEX INCORPORATED AND SHOULD NOT BE USED WITHOUT WRITTEN PERMISSION										