

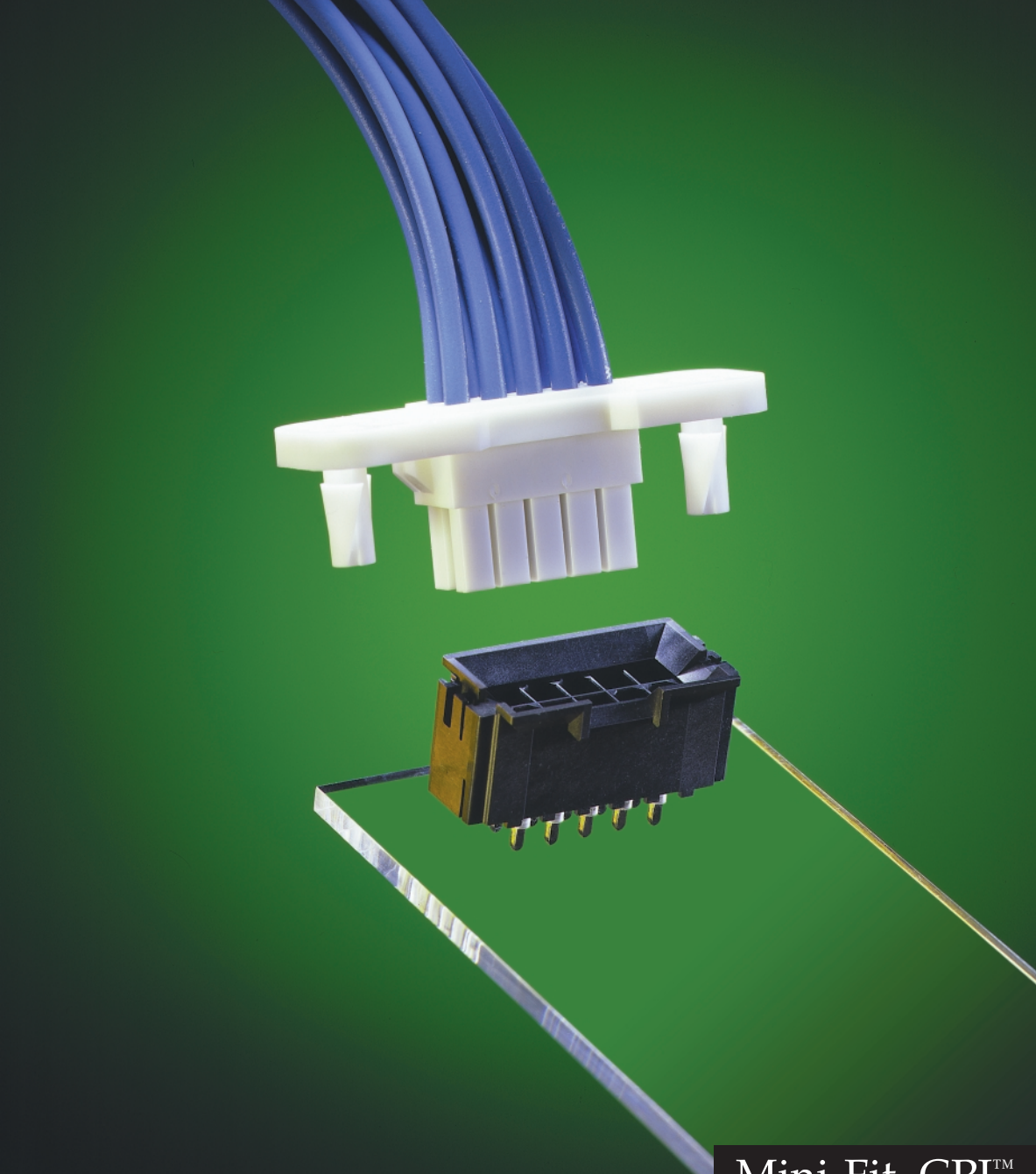
Distributed by:

JAMECO[®]
ELECTRONICS

www.Jameco.com ♦ 1-800-831-4242

The content and copyrights of the attached
material are the property of its owner.

Jameco Part Number 884221



Mini-Fit, CPI™

Compliant Pin Interface

Headers



FEATURES AND SPECIFICATIONS

molex® Mini-Fit CPI™ Introduction

This product line offers great design flexibility by allowing you to connect:

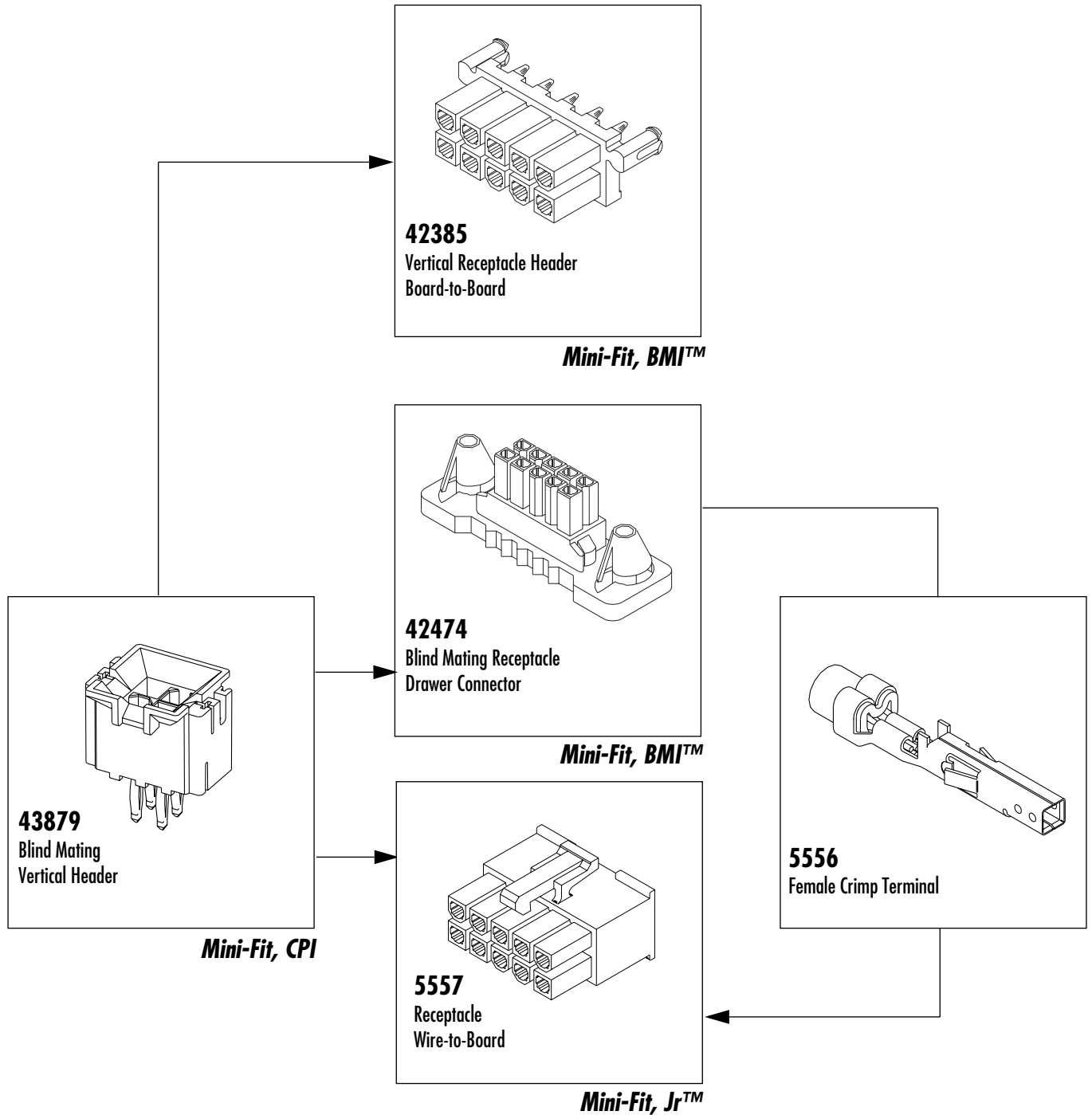
Mini-Fit, Jr.

- Mini-Fit, Jr. 5556 Female crimp terminal
- Mini-Fit, Jr. 5557 receptacle with positive lock (wire-to-board)

Mini-Fit, BMI

- Mini-Fit, BMI 42474 Blind mating receptacle (wire-to-board)
- Mini-Fit, BMI 42385 Blind mating header receptacle (board-to-board)

The Mini-Fit, CPI is a compliant pin interface header from the well-known Mini-Fit family. This product is designed for high current/high density applications which require press fit headers. It is appropriate for both power and signal applications as it can carry currents of up to 8 amperes per circuit.



FEATURES AND SPECIFICATIONS

Features and Benefits

- Press-fit pin requiring no soldering
- Blind mating vertical header
- Designed for multiple board thicknesses of .094" and greater

Reference Information

Designed in: Millimeters
 Packaging: Tray
 Product Specifications: PS-43879-001
 UL File No.: E29179
 CSA File No.: LR19980
 TUV License No.: R75142
 Mates with: 5557, 42385 and 42474 receptacles

Electrical

Voltage: 600V
 Current: 8.0A max.
 Contact Resistance: 10mΩ max.
 Dielectric Withstanding Voltage: 1500V
 Insulation Resistance: 1000 MΩ min.

Mechanical

Insertion Force to PCB: 196.13N (44.09 lb) per circuit max.
 Retention Force to PCB: 49.03N (11.02 lb) per circuit min.
 Mating Force: 6.86N (1.54 lb) per circuit max.
 Unmating Force: 3.43N (0.771 lb) per circuit min.
 Normal Force: 1.96N (0.44 lb) min.
 Durability: 30 cycles

Physical

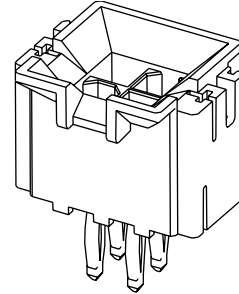
Housing: 4/6 nylon, UL 94V-0
 Contact: Phosphor Bronze
 Plating: Tin or Gold
 Operating Temperature: -40 to +105°C
 (Including 30°C terminal temperature at full current)



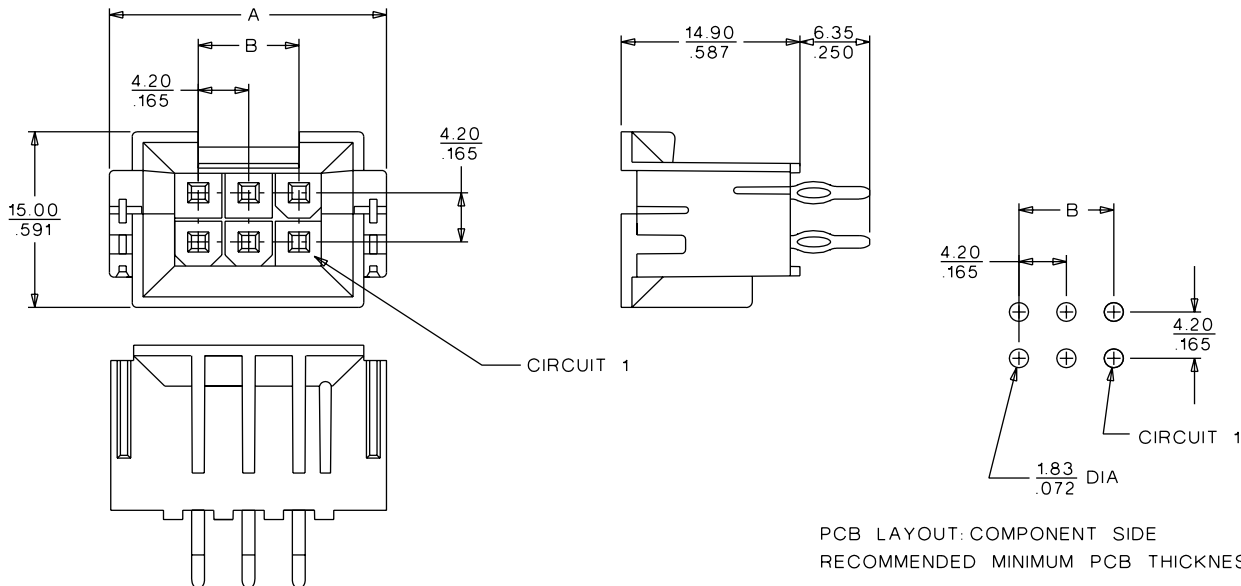
4.20mm (.165") Pitch Mini-Fit, CPI™ Compliant Pin Interface

43879

Dual Row, Vertical Header



DIMENSIONS



ORDERING INFORMATION

Circuits	Order No.		Dimension	
	Tin Plated	Gold Plated	A	B
4	43879-0022	43879-0033	18.81 (.740)	4.20 (.165)
6	43879-0023	43879-0034	23.01 (.906)	8.40 (.331)
10	43879-0025	43879-0036	31.41 (1.237)	16.80 (.661)
14	43879-0027	43879-0038	39.81 (1.567)	25.20 (.992)
18	43879-0029	43879-0040	48.21 (1.898)	33.60 (1.323)
24	43879-0032	43879-0043	60.81 (2.394)	46.20 (1.819)

Insertion Tool with Manual Press

This application tooling was designed specifically to press in the Mini-Fit, CP connector series 43879

Features

- Tooling rotates in 90° increments allowing Mini-Fit to be positioned in four different orientations
- Laser locator aids in identifying pin orientation or PC board
- Adjustable board thickness ranging from .062" to .300"
- Accommodates left and right hand operators
- Polarization of tooling allows connector to be loaded in the proper orientation
- 4 to 24 circuits with change parts included
- Fits Molex standard Manual Press

Specifications

Weight: Including Press—24.1 kg (53 lbs.)

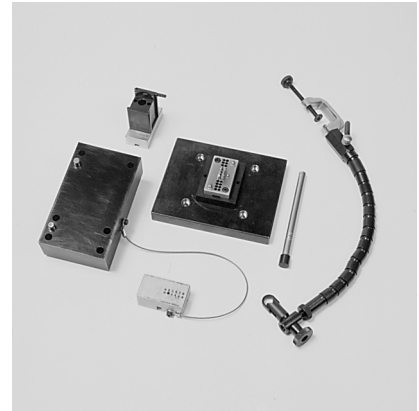
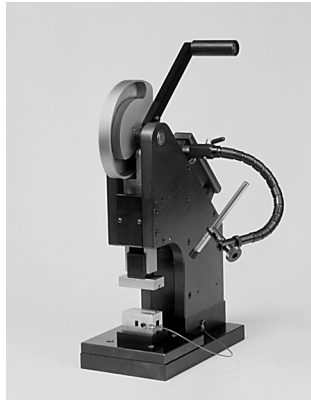
Size: Including Press

Height—498mm (19.6")

Length—269mm (10.6")

Depth—152.4mm (6")

Rate: 120 connectors/hr depending on operator skill



Ordering Information

Description	Order No.	Product No.
Manual Press and Tool Kit	62200-6900	43879
Tool Kit Only	62200-5800	43879
Manual Press	11-31-6356	

Press-In Tool

Features

- Includes one pin holder, one backing plate and 24 alignment pins
- This locking assembly may be used in a wide variety of flat platen presses
- A separate board support palette is required by customer
- The connector is pressed into the board from the top
- Tool accommodates the full range of product from 4 to 24 circuits with removable pin:

Specifications

Weight: Assembly—0.91 kg (2 lbs.)

Size: Assembly

Height—19.5mm (0.8")

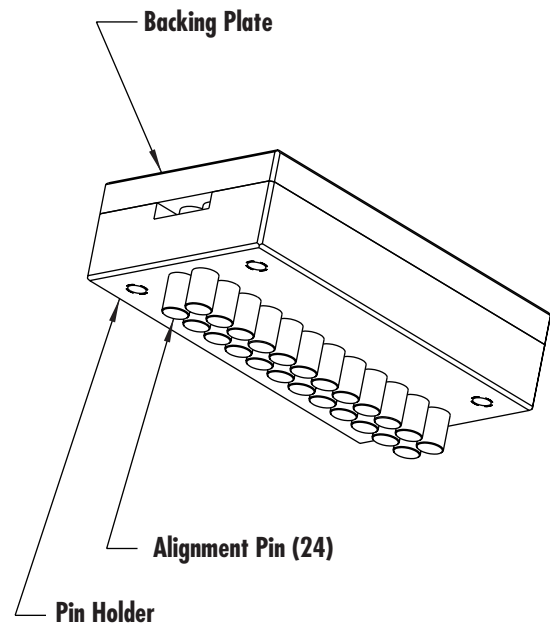
Length—54.5mm (2.1")

Depth—31.8mm (1.3")

Rate: 150 connectors/hr dependent on operator skill

Ordering Information

Description	Order No.	Product No.
Press-In Tool	62200-9400	43879

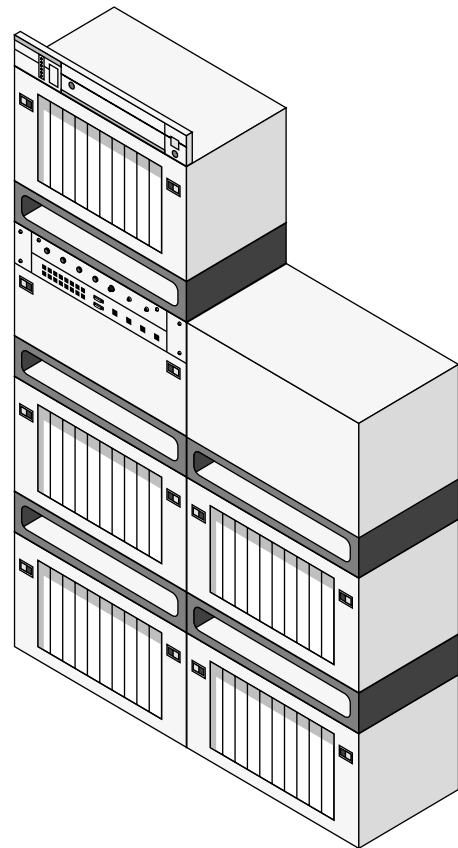
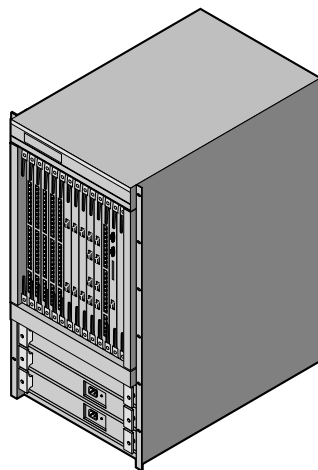
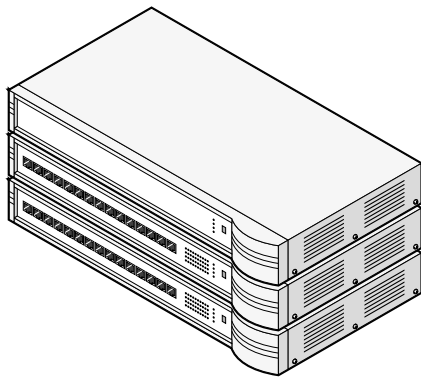


INTERNETWORKING SYSTEMS

- Concentrators
- Hubs and Routers
- LANS
- WANS
- Servers
- Backplanes

TELECOMMUNICATIONS

- Hubs and Routers
- Servers
- Backplanes





Bringing People & Technology Together, WorldwideSM

Americas Headquarters

Lisle, Illinois 60532 U.S.A.
Tel: 1-800-78MOLEX
Fax: 630-969-1352

Far East North Headquarters

Kanagawa, Japan
Tel: 81-462-65-2324
Fax: 81-462-65-2361

Far East South Headquarters

Jurong, Singapore
Tel: 65-268-6868
Fax: 65-265-6044

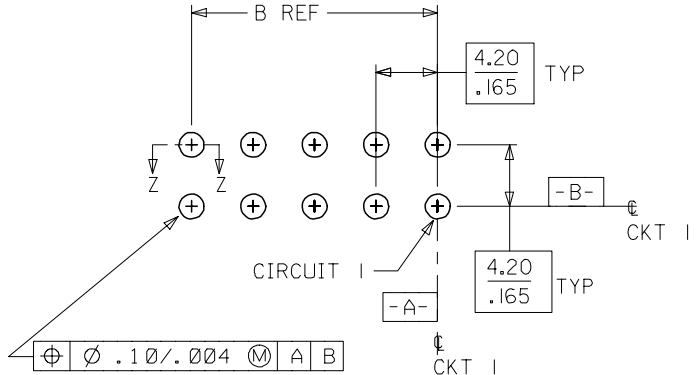
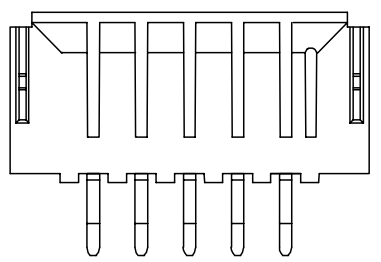
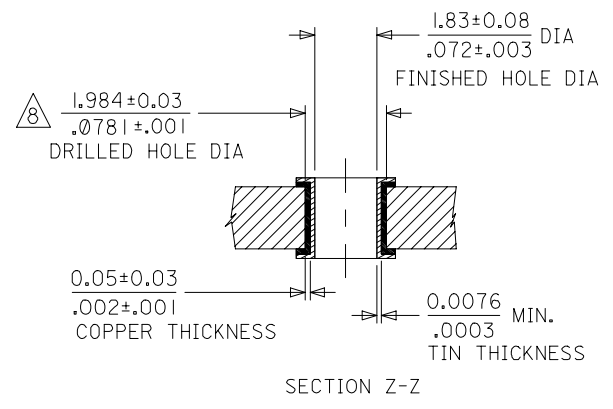
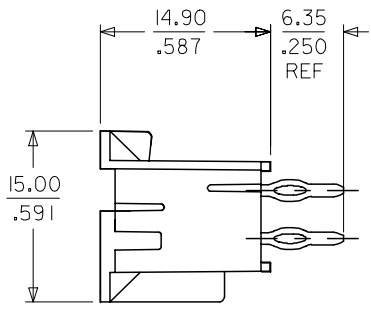
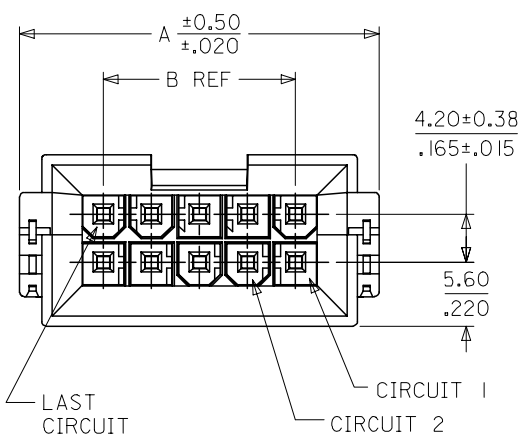
European Headquarters

Munich, Germany
Tel: 49-89-413092-0
Fax: 49-89-401527

Corporate Headquarters

2222 Wellington Court
Lisle, Illinois 60532 U.S.A.
Tel: 630-969-4550
Fax: 630-969-1352

Visit our Web site at <http://www.molex.com>



CKT	A	B
4	18.81 .740	4.20 .165
6	23.01 .906	8.40 .331
8	27.21 1.071	12.60 .496
10	31.41 1.237	16.80 .661
12	35.61 1.402	21.00 .827
14	39.81 1.567	25.20 .992
16	44.01 1.733	29.40 1.157
18	48.21 1.898	33.60 1.323
20	52.41 2.063	37.80 1.488
22	56.61 2.229	42.00 1.654
24	60.81 2.394	46.20 1.819

NOTES:

- MATERIAL: HOUSING - NYLON GLASS FILLED UL94V-0
TERMINAL: PHOSPHOR BRONZE
- FINISH: SEE SHEET 2
- PRODUCT SPECIFICATION: SEE PS-43879-001
- THIS PART MATES WITH RECEPTACLE NUMBERS 5557 AND 42474
- THIS PART MATES WITH HEADER NUMBER 42385
- PART ALLOWS FOR 1.27/.050 MAX. MIS-ALIGNMENT WITH MATING HOUSING IN ANY DIRECTION
- CONNECTOR ASSEMBLIES ARE NOT TO BE MATED AND UNMATED WHILE CIRCUITS ARE LIVE.
- DRILLED HOLE DIAMETER IS EQUIVALENT TO 5/64 STANDARD DRILL BIT.
- PART CONFORMS TO CLASS B OF COSMETIC SPECIFICATION PS-45499-002.

PCB LAYOUT: COMPONENT SIDE
RECOMMENDED MINIMUM PCB THICKNESS: 2.24
.088

2	J3
1	J3
SHEET REV	

ADDED NOTES 8 & 9 EC NO: UCP2007-0904 DRWN: C STEWART 2006/10/24 CHKD: G POLGAR 2006/10/24 APPR: J COMERC 2006/10/24	QUALITY SYMBOLS ▽=0 ▽=0	GENERAL TOLERANCES (UNLESS SPECIFIED) <table border="1"> <thead> <tr> <th></th> <th>mm</th> <th>INCH</th> </tr> </thead> <tbody> <tr> <td>4 PLACES</td> <td>± ---</td> <td>± ---</td> </tr> <tr> <td>3 PLACES</td> <td>± ---</td> <td>± .010</td> </tr> <tr> <td>2 PLACES</td> <td>± 0.25</td> <td>± .014</td> </tr> <tr> <td>1 PLACE</td> <td>± 0.35</td> <td>± ---</td> </tr> </tbody> </table>		mm	INCH	4 PLACES	± ---	± ---	3 PLACES	± ---	± .010	2 PLACES	± 0.25	± .014	1 PLACE	± 0.35	± ---	DIMENSION STYLE MM/IN	SCALE ---	DESIGN UNITS METRIC	THIRD ANGLE PROJECTION
		mm	INCH																		
	4 PLACES	± ---	± ---																		
	3 PLACES	± ---	± .010																		
2 PLACES	± 0.25	± .014																			
1 PLACE	± 0.35	± ---																			
DRAWN BY MANLAPAZ	DATE 1998/04/08	TITLE MINI-FIT JR BMI/CPI HEADER ASSEMBLY																			
CHECKED BY BANDURA	DATE 1998/04/08	APPROVED BY EDGLEY																			
MATERIAL NO. SEE SHEET 2	DATE 1998/04/08	DOCUMENT NO. SD-43879-021		SHEET NO. 1 OF 2																	

THIS DRAWING CONTAINS INFORMATION THAT IS PROPRIETARY TO MOLEX INCORPORATED AND SHOULD NOT BE USED WITHOUT WRITTEN PERMISSION

	10	9	8	7	6	5	4	3	2	1
	FINISH: 1 TIN OVER NICKEL		FINISH: 2 GOLD & TIN/LEAD OVER NICKEL		FINISH: 3 TIN/LEAD OVER NICKEL		FINISH: 4 GOLD & TIN OVER NICKEL			
F	CKTS	MATERIAL NO.	CKTS	MATERIAL NO.	CKTS	MATERIAL NO.	CKTS	MATERIAL NO.		
	04	43879-0022	04	43879-0033	04	43879-0044	04	43879-0055		
	06	43879-0023	06	43879-0034	06	43879-0045	06	43879-0056		
	08		08		08		08			
	10	43879-0025	10	43879-0036	10	43879-0047	10	43879-0058		
	12		12		12		12			
E	14	43879-0027	14	43879-0038	14	43879-0049	14	43879-0060		
	16		16		16		16			
	18	43879-0029	18	43879-0040	18	43879-0051	18	43879-0062		
	20		20		20		20			
	22		22		22		22			
	24	43879-0032	24	43879-0043	24	43879-0054	24	43879-0065		

D FINISH:

1 - .00254/.000100 MIN. BRIGHT TIN OVER .00127/.000050 MIN. NICKEL OVERALL.

2 - .00076/.000030 MIN. GOLD IN CONTACT AREA, .00254/.000100 MIN. 90/10 MATTE TIN/LEAD IN TAIL AREA, OVER .00127/.000050 MIN. NICKEL OVERALL.

3 - .00254/.000100 MIN. 90/10 BRIGHT TIN/LEAD OVER .00127/.000050 MIN. NICKEL OVERALL.

4 - .00076/.000030 MIN. GOLD IN CONTACT AREA, .00254/.000100 MIN. MATTE TIN IN TAIL AREA, OVER .00127/.000050 MIN. NICKEL OVERALL.

C

B

SEE SHEET ONE EC NO: UCP2007-0904 DRWN: STEWART 2006/10/24 CHKD: GPOLGAR 2006/10/24 APPR: JCOMERCI 2006/10/24	QUALITY SYMBOLS	GENERAL TOLERANCES (UNLESS SPECIFIED)	DIMENSION STYLE	SCALE	DESIGN UNITS	THIRD ANGLE PROJECTION															
	=0 =0	<table border="1"> <thead> <tr> <th></th> <th>mm</th> <th>INCH</th> </tr> </thead> <tbody> <tr> <td>4 PLACES</td> <td>± ---</td> <td>± ---</td> </tr> <tr> <td>3 PLACES</td> <td>± ---</td> <td>± .010</td> </tr> <tr> <td>2 PLACES</td> <td>± 0.25</td> <td>± .014</td> </tr> <tr> <td>1 PLACE</td> <td>± 0.35</td> <td>± ---</td> </tr> </tbody> </table>		mm	INCH	4 PLACES	± ---	± ---	3 PLACES	± ---	± .010	2 PLACES	± 0.25	± .014	1 PLACE	± 0.35	± ---	MM/IN	---	METRIC	
		mm	INCH																		
	4 PLACES	± ---	± ---																		
3 PLACES	± ---	± .010																			
2 PLACES	± 0.25	± .014																			
1 PLACE	± 0.35	± ---																			
DESCRIPTION	DRAWN BY	DATE	TITLE	MINI-FIT JR BMI/CPI HEADER ASSEMBLY																	
REV	CHECKED BY	DATE	APPROVED BY																		
J3	EDGLEY	1998/04/08	1998/04/08	MOLEX INCORPORATED																	
	MATERIAL NO.	DOCUMENT NO.	SHEET NO.																		
	SEE CHART	SD-43879-021	2 OF 2																		
	DRAFT WHERE APPLICABLE MUST REMAIN WITHIN DIMENSIONS																				
	THIS DRAWING CONTAINS INFORMATION THAT IS PROPRIETARY TO MOLEX INCORPORATED AND SHOULD NOT BE USED WITHOUT WRITTEN PERMISSION																				