

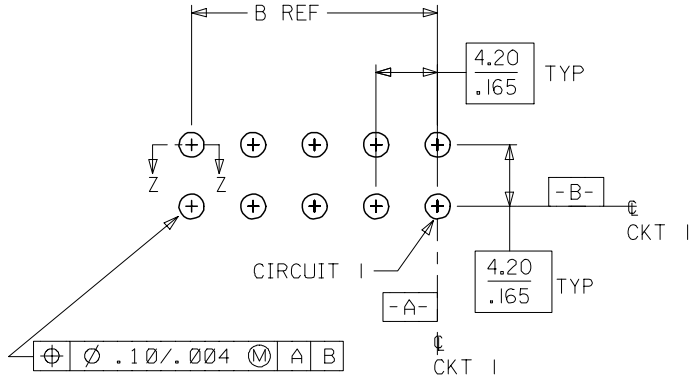
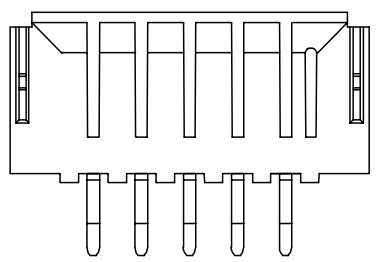
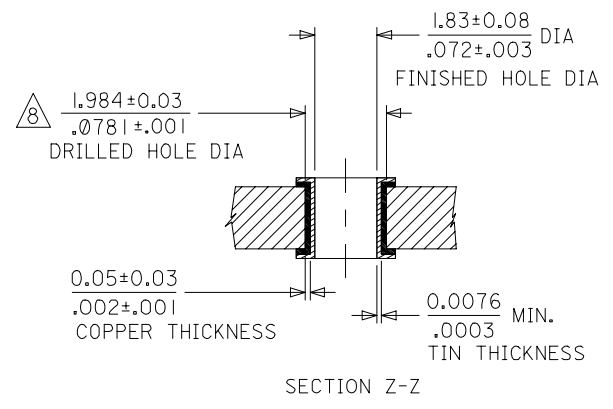
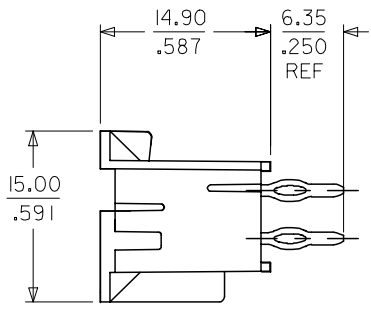
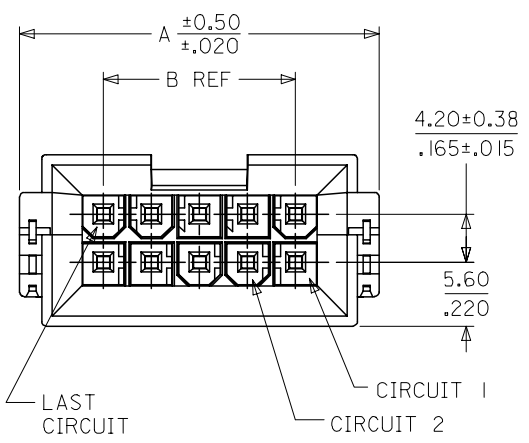
Distributed by:

**JAMECO**<sup>®</sup>  
ELECTRONICS

**www.Jameco.com ♦ 1-800-831-4242**

The content and copyrights of the attached  
material are the property of its owner.

Jameco Part Number 800497



CKT	A	B
4	18.81 / .740	4.20 / .165
6	23.01 / .906	8.40 / .331
8	27.21 / 1.071	12.60 / .496
10	31.41 / 1.237	16.80 / .661
12	35.61 / 1.402	21.00 / .827
14	39.81 / 1.567	25.20 / .992
16	44.01 / 1.733	29.40 / 1.157
18	48.21 / 1.898	33.60 / 1.323
20	52.41 / 2.063	37.80 / 1.488
22	56.61 / 2.229	42.00 / 1.654
24	60.81 / 2.394	46.20 / 1.819

NOTES:

- MATERIAL: HOUSING - NYLON GLASS FILLED UL94V-0  
TERMINAL: PHOSPHOR BRONZE
- FINISH: SEE SHEET 2
- PRODUCT SPECIFICATION: SEE PS-43879-001
- THIS PART MATES WITH RECEPTACLE NUMBERS 5557 AND 42474
- THIS PART MATES WITH HEADER NUMBER 42385
- PART ALLOWS FOR 1.27/.050 MAX. MIS-ALIGNMENT WITH MATING HOUSING IN ANY DIRECTION
- CONNECTOR ASSEMBLIES ARE NOT TO BE MATED AND UNMATED WHILE CIRCUITS ARE LIVE.
- DRILLED HOLE DIAMETER IS EQUIVALENT TO 5/64 STANDARD DRILL BIT.
- PART CONFORMS TO CLASS B OF COSMETIC SPECIFICATION PS-45499-002.

PCB LAYOUT: COMPONENT SIDE  
RECOMMENDED MINIMUM PCB THICKNESS:  $2.24$  /  $.088$

2	J3
1	J3
SHEET REV	

REV	DESCRIPTION	QUALITY SYMBOLS	GENERAL TOLERANCES (UNLESS SPECIFIED)		DIMENSION STYLE	SCALE	DESIGN UNITS	THIRD ANGLE PROJECTION
			mm	INCH	MM/IN	---	METRIC	
J3	ADDED NOTES 8 & 9 EC NO: UCP2007-0904 DRWN: C STEWART 2006/10/24 CHKD: G POLGAR 2006/10/24 APPR: J COMERC 2006/10/24	$\nabla=0$ $\nabla=0$	4 PLACES	$\pm$ ---	$\pm$ ---	MM/IN	---	MINI-FIT JR BMI/CPI HEADER ASSEMBLY
			3 PLACES	$\pm$ ---	$\pm .010$			
			2 PLACES	$\pm 0.25$	$\pm .014$			MOLEX INCORPORATED
			1 PLACE	$\pm 0.35$	$\pm$ ---			
			ANGULAR $\pm 1/2^\circ$					DOCUMENT NO. SD-43879-021
			DRAFT WHERE APPLICABLE MUST REMAIN WITHIN DIMENSIONS					
					SEE SHEET 2			SHEET NO. 1 OF 2
					THIS DRAWING CONTAINS INFORMATION THAT IS PROPRIETARY TO MOLEX INCORPORATED AND SHOULD NOT BE USED WITHOUT WRITTEN PERMISSION			

	10	9	8	7	6	5	4	3	2	1
	FINISH: 1 TIN OVER NICKEL		FINISH: 2 GOLD & TIN/LEAD OVER NICKEL		FINISH: 3 TIN/LEAD OVER NICKEL		FINISH: 4 GOLD & TIN OVER NICKEL			
F	CKTS	MATERIAL NO.	CKTS	MATERIAL NO.	CKTS	MATERIAL NO.	CKTS	MATERIAL NO.		
	04	43879-0022	04	43879-0033	04	43879-0044	04	43879-0055		
	06	43879-0023	06	43879-0034	06	43879-0045	06	43879-0056		
	08		08		08		08			
	10	43879-0025	10	43879-0036	10	43879-0047	10	43879-0058		
	12		12		12		12			
E	14	43879-0027	14	43879-0038	14	43879-0049	14	43879-0060		
	16		16		16		16			
	18	43879-0029	18	43879-0040	18	43879-0051	18	43879-0062		
	20		20		20		20			
	22		22		22		22			
	24	43879-0032	24	43879-0043	24	43879-0054	24	43879-0065		

- FINISH:
- 1 - .00254/.000100 MIN. BRIGHT TIN OVER .00127/.000050 MIN. NICKEL OVERALL.
  - 2 - .00076/.000030 MIN. GOLD IN CONTACT AREA, .00254/.000100 MIN. 90/10 MATTE TIN/LEAD IN TAIL AREA, OVER .00127/.000050 MIN. NICKEL OVERALL.
  - 3 - .00254/.000100 MIN. 90/10 BRIGHT TIN/LEAD OVER .00127/.000050 MIN. NICKEL OVERALL.
  - 4 - .00076/.000030 MIN. GOLD IN CONTACT AREA, .00254/.000100 MIN. MATTE TIN IN TAIL AREA, OVER .00127/.000050 MIN. NICKEL OVERALL.

SEE SHEET ONE EC NO: UCP2007-0904 DRWN: STEWART 2006/10/24 CHKD: GPOLGAR 2006/10/24 APPR: JCOMERCI 2006/10/24	QUALITY SYMBOLS	GENERAL TOLERANCES (UNLESS SPECIFIED)	DIMENSION STYLE	SCALE	DESIGN UNITS	THIRD ANGLE PROJECTION															
	=0 =0	<table border="1"> <thead> <tr> <th></th> <th>mm</th> <th>INCH</th> </tr> </thead> <tbody> <tr> <td>4 PLACES</td> <td>± ---</td> <td>± ---</td> </tr> <tr> <td>3 PLACES</td> <td>± ---</td> <td>± .010</td> </tr> <tr> <td>2 PLACES</td> <td>± 0.25</td> <td>± .014</td> </tr> <tr> <td>1 PLACE</td> <td>± 0.35</td> <td>± ---</td> </tr> </tbody> </table>		mm	INCH	4 PLACES	± ---	± ---	3 PLACES	± ---	± .010	2 PLACES	± 0.25	± .014	1 PLACE	± 0.35	± ---	MM/IN	---	METRIC	
		mm	INCH																		
	4 PLACES	± ---	± ---																		
3 PLACES	± ---	± .010																			
2 PLACES	± 0.25	± .014																			
1 PLACE	± 0.35	± ---																			
DESCRIPTION	DRAWN BY	DATE	TITLE	MINI-FIT JR BMI/CPI HEADER ASSEMBLY																	
REV	CHECKED BY	DATE	APPROVED BY																		
J3	EDGLEY	1998/04/08	1998/04/08	MOLEX INCORPORATED																	
	MATERIAL NO.	DOCUMENT NO.	SHEET NO.																		
	SEE CHART	SD-43879-021	2 OF 2																		
	DRAFT WHERE APPLICABLE MUST REMAIN WITHIN DIMENSIONS																				
	THIS DRAWING CONTAINS INFORMATION THAT IS PROPRIETARY TO MOLEX INCORPORATED AND SHOULD NOT BE USED WITHOUT WRITTEN PERMISSION																				