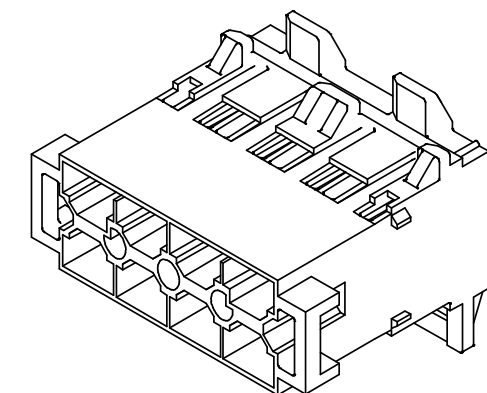
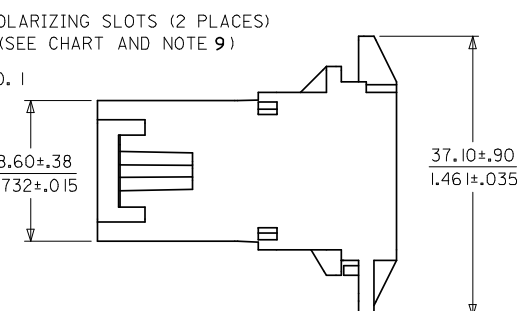
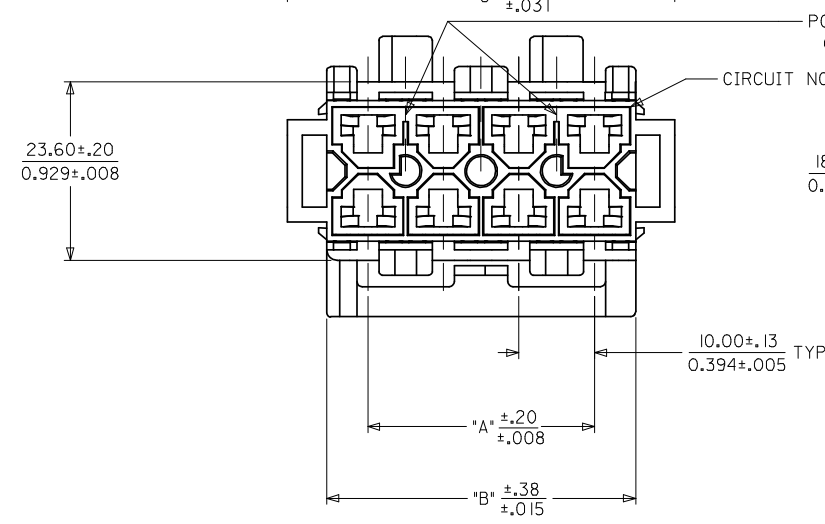
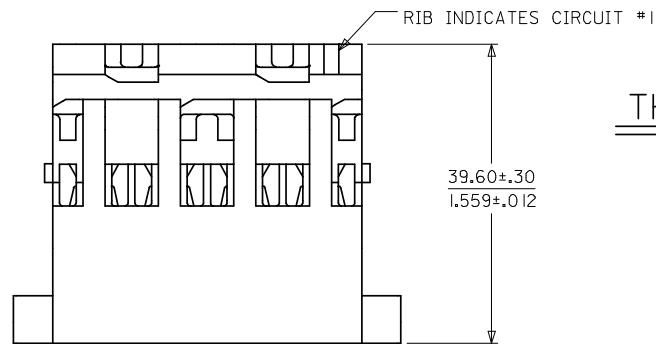


MATERIAL NUMBER	POSITION NUMBER	DIM. "A"	DIM. "B"	DIM. "C"	QUANTITY OF POLARIZING SLOTS	PANEL THICKNESS ACCOMMODATED
43938-2101	6	20.00 .787	30.90 1.216	41.30 1.626	1	1.80/2.00 .071/.079
43938-2102	8	30.00 1.181	40.90 1.610	51.30 2.020	2	
43938-2103	10	40.00 1.575	50.90 2.004	61.30 2.413	2	
43938-2104	12	50.00 1.968	60.90 2.398	71.30 2.807	2	
43938-2105	14	60.00 2.362	70.90 2.791	81.30 3.201	2	

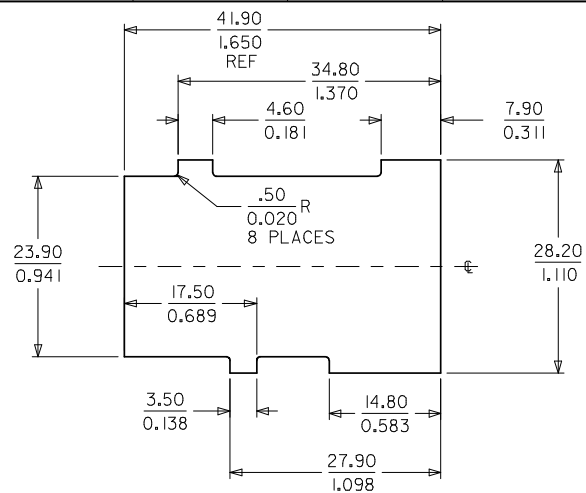
NOTES:

- MATERIAL: UNFILLED POLYESTER, U.L. 94V-0, COLOR: BLACK
- FINISH: NONE
- PRODUCT SPECIFICATION: PS-42815-001
- FOR PACKAGING INFORMATION SEE PK-45286-002.
- THIS PART IS DESIGNED TO USE MALE CRIMP TERMINAL #42817.
- EACH WIRE MUST BE DRESSED SUCH THAT THE TERMINAL MAINTAINS ITS FREE FLOAT WITHIN THE HOUSING.
- THIS PART IS DESIGNED TO USE T.P.A. #43980.
- THIS PART IS DESIGNED TO MATE WITH RECEPTACLE HOUSING #43914.
- SEE SHEET 2 FOR PANEL CUT-OUT DETAILS.
- POLARIZING SLOTS TO BE LOCATED BETWEEN CIRCUITS ON EITHER END OF HOUSING OF THE CIRCUIT 1 ROW AS SHOWN.  
EXCEPTION: THE 6 CIRCUIT HOUSING WILL HAVE A SINGLE SLOT ON THE CIRCUIT 1 END ONLY.

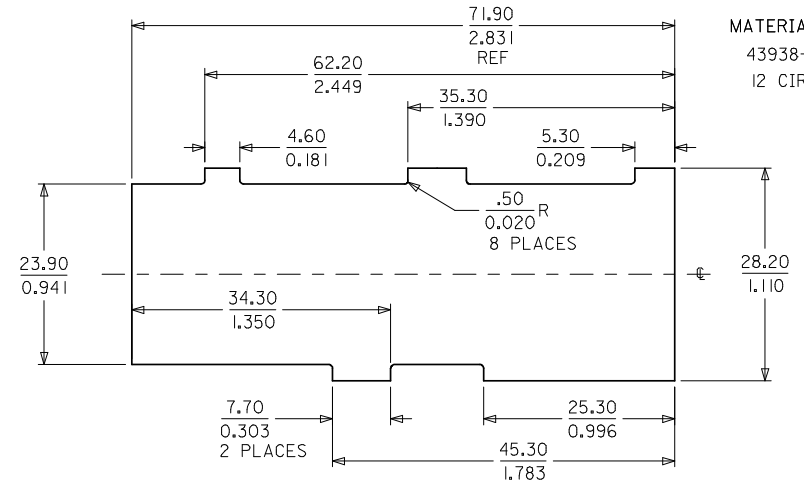
THIS PRODUCT MUST NOT BE USED WITHOUT THE T.P.A.



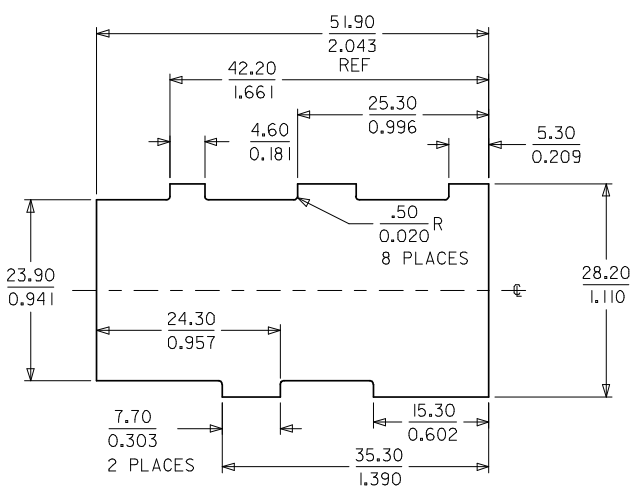
<b>CHG PK SPEC</b> EC NO: UCP2008-2918 DRWINGSMART 2008/07/14 CHKD:ALHAG 2008/07/15 APPR:FSMITH 2008/08/01	QUALITY SYMBOLS ▽=0 ▽=0	GENERAL TOLERANCES (UNLESS SPECIFIED)		DIMENSION STYLE		SCALE	DESIGN UNITS	THIRD ANGLE PROJECTION			
				MM/IN			METRIC				
				mm	INCH	DRAWN BY	DATE	TITLE			
				4 PLACES ± --- ± ---	± --- ± ---	POLGAR	1998/08/21	DUAL ROW PANEL MT, PLUG 6-14 CKT., BOTTOM LATCH, MINI-FIT SR. SERIES			
		3 PLACES ± --- ± ---	± --- ± ---	CHECKED BY	DATE						
		2 PLACES ± --- ± ---	± --- ± ---	COMERC I	1998/10/02						
		1 PLACE ± --- ± ---	± --- ± ---	APPROVED BY	DATE						
		ANGULAR ±1/2°		COMERC I	1998/10/02						
DRAFT WHERE APPLICABLE MUST REMAIN WITHIN DIMENSIONS		SEE TABLE		MATERIAL NO.		DOCUMENT NO.		SHEET NO.			
				SD-43938-002		MOLEX INCORPORATED		1 OF 2			
				THIS DRAWING CONTAINS INFORMATION THAT IS PROPRIETARY TO MOLEX INCORPORATED AND SHOULD NOT BE USED WITHOUT WRITTEN PERMISSION							



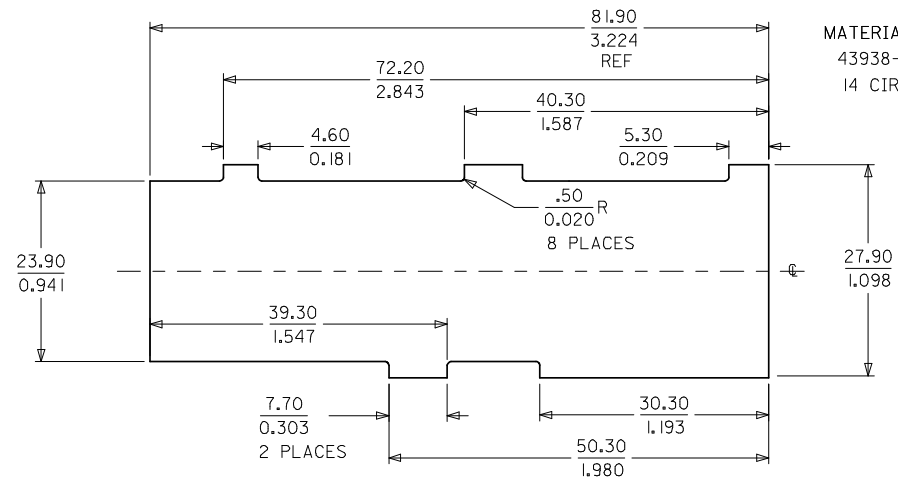
MATERIAL NO.:  
43938-2101  
6 CIRCUIT



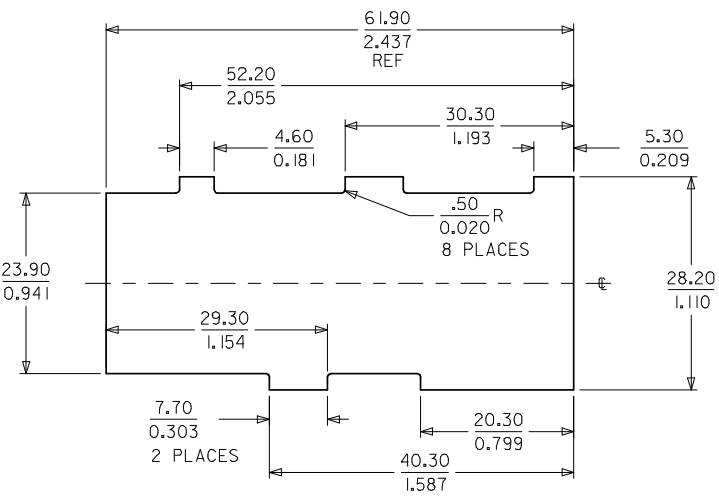
MATERIAL NO.:  
43938-2104  
12 CIRCUIT



MATERIAL NO.:  
43938-1102  
43938-2102  
8 CIRCUIT



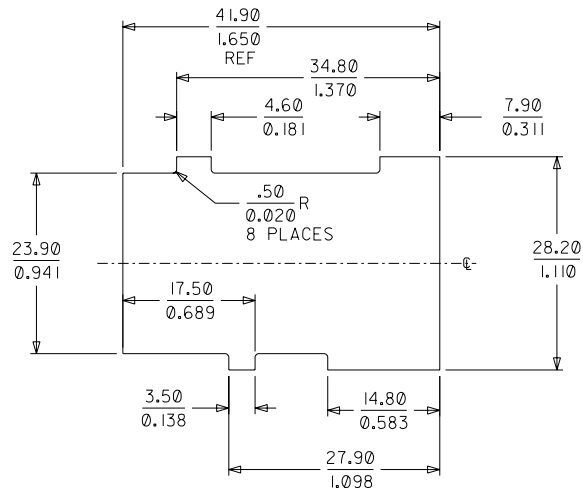
MATERIAL NO.:  
43938-2105  
14 CIRCUIT



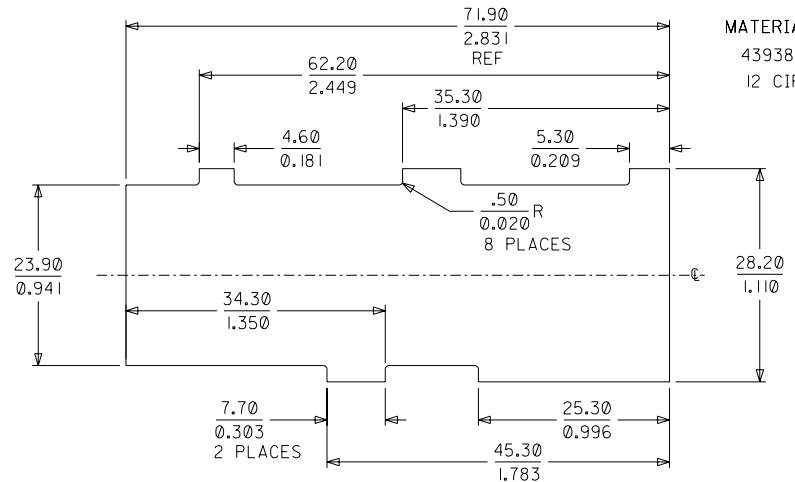
MATERIAL NO.:  
43938-2103  
10 CIRCUIT

PANEL OPENINGS SHOWN FROM OUTSIDE OF BOX.  
SEE CHART FOR PANEL THICKNESS.

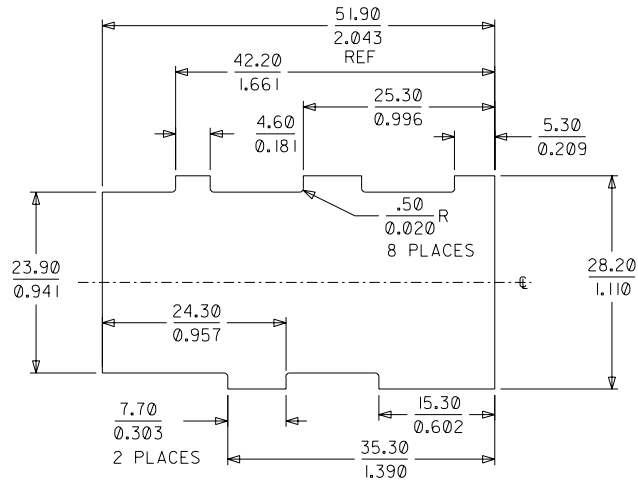
<b>UPDATE REV LEVEL</b> EC NO: UCP2008-2918 DRWNSMART 2008/07/14 CHKD: AELHAG 2008/07/15 APPR: FSMITH 2008/08/01	QUALITY SYMBOLS	GENERAL TOLERANCES (UNLESS SPECIFIED)	DIMENSION STYLE	SCALE	DESIGN UNITS	THIRD ANGLE PROJECTION
	▽=0	mm INCH	MM/IN	1:1	METRIC	
	▽=0	4 PLACES ± --- ± ---	DRAWN BY DATE	TITLE		
		3 PLACES ± --- ± ---	POLGAR 1998/08/21	DUAL ROW PANEL MT, PLUG		
		2 PLACES ± --- ± ---	CHECKED BY DATE	6-14 CKT., BOTTOM LATCH,		
	1 PLACE ± --- ± ---	COMERC I 1998/10/02	MINI-FIT SR. SERIES			
	ANGULAR ±1/2°	APPROVED BY DATE	MOLEX INCORPORATED			
		COMERC I 1998/10/02	SEE TABLE			
		MATERIAL NO.	DOCUMENT NO.		SHEET NO.	
			SD-43938-002		2 OF 2	
			THIS DRAWING CONTAINS INFORMATION THAT IS PROPRIETARY TO MOLEX INCORPORATED AND SHOULD NOT BE USED WITHOUT WRITTEN PERMISSION			



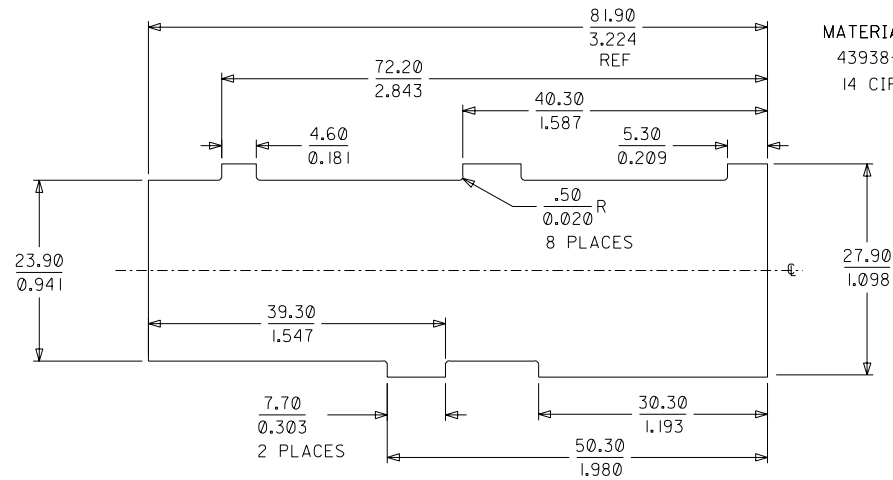
MATERIAL NO.:  
43938-2101  
6 CIRCUIT



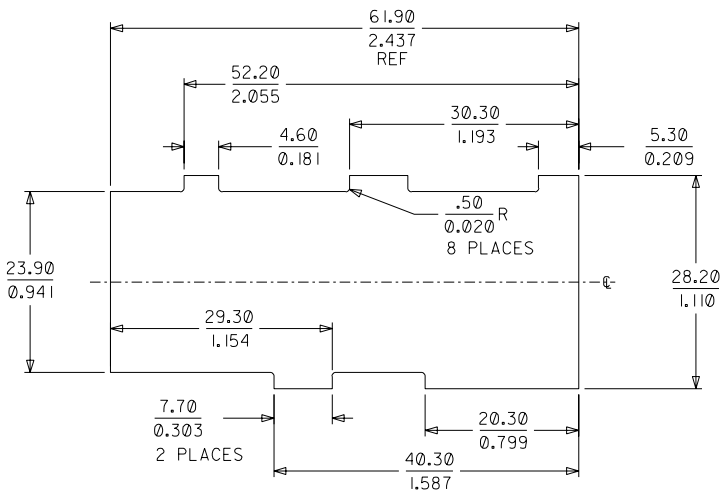
MATERIAL NO.:  
43938-2104  
12 CIRCUIT



MATERIAL NO.:  
43938-1102  
43938-2102  
8 CIRCUIT



MATERIAL NO.:  
43938-2105  
14 CIRCUIT



MATERIAL NO.:  
43938-2103  
10 CIRCUIT

PANEL OPENINGS SHOWN FROM OUTSIDE OF BOX.  
SEE CHART FOR PANEL THICKNESS.

SEE SHEET 1	QUALITY SYMBOLS
EC NO. UCP2004-0496	MAJOR $\nabla = 0$
DRWG: COMERCI 03/09/12	CRITICAL $\nabla = 0$
CHK: COMERCI 03/09/12	
APPR: COMERCI 03/09/12	
REV	DESCRIPTION
D2	

GENERAL TOLERANCES: (UNLESS SPECIFIED)	SCALE 2 : 1	DESIGN UNITS <input checked="" type="checkbox"/> mm <input type="checkbox"/> INCH
4 PLACES ±0.--- ±.---	DRAWN BY & DATE	THIRD ANGLE PROJECTION
3 PLACES ±0.--- ±.004	POLGAR 98/08/21	<input checked="" type="checkbox"/> mm <input type="checkbox"/> INCH <input type="checkbox"/> mm ONLY
2 PLACES ±0.10 ±.---	CHECKED BY & DATE	TITLE: DUAL ROW PANEL MT. PLUG, 6-14 CKT., BOTTOM LATCH, MINI-FIT SR. SERIES
1 PLACE ±0.--- ±.---	COMERCI 98/10/02	APPROVED BY & DATE
ANGULAR: ± --°	COMERCI 98/10/02	MATERIAL NO. SEE CHART
	CAD FILENAME	DRAWING NO. SD-43938-002
DRAFT WHERE APPLICABLE MUST REMAIN WITHIN DIMENSIONS		SHEET NO. 2
		SIZE C

DIMENSIONS:		SHT	REV
		2	1
THIS DRAWING CONTAINS INFORMATION THAT IS PROPRIETARY TO MOLEX INCORPORATED AND SHOULD NOT BE USED WITHOUT WRITTEN PERMISSION.		REVISE ON CAD ONLY	