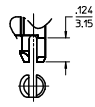
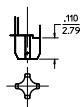


20 19 18 17 16 15 14 13 12 11 10 9 8 7 6 5 4 3 2 1



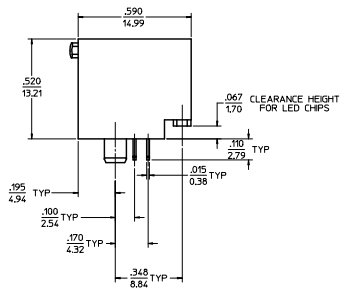
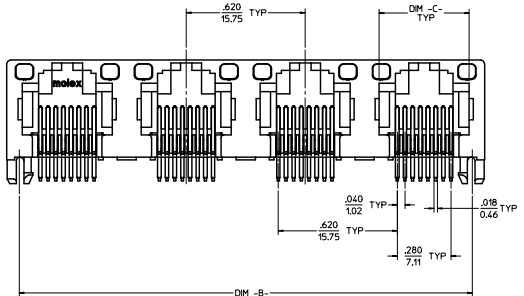
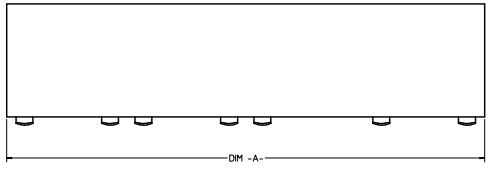
SNAP-FIT PEG OPTION
SCALE: NTS
SEE NOTE #8



PRESS-FIT PEG OPTION
SCALE: NTS
SEE NOTE #8

8 CIRCUIT HOUSING(S)						
ASSEMBLY MATERIAL NUMBER	NUMBER OF CIRCUITS	NUMBER OF PORTS	PEG STYLE	DIM -A-	DIM -B-	DIM -C-
44248-0001	8	2	SNAP-FIT	1.250/31.75	1.120/28.45	.469/11.92
44248-0002	8	4	SNAP-FIT	2.490/63.25	2.360/59.94	.469/11.92
44248-0005	8	2	PRESS-FIT	1.250/31.75	1.120/28.45	.469/11.92
44248-0006	8	4	PRESS-FIT	2.490/63.25	2.360/59.94	.469/11.92

6 CIRCUIT HOUSING(S)						
ASSEMBLY MATERIAL NUMBER	NUMBER OF CIRCUITS	NUMBER OF PORTS	PEG STYLE	DIM -A-	DIM -B-	DIM -C-
44248-0009	6	2	SNAP-FIT	1.250/31.75	1.120/28.45	.389/9.88
44248-0010	4	2	SNAP-FIT	1.250/31.75	1.120/28.45	.389/9.88
44248-0011	6	4	SNAP-FIT	2.490/63.25	2.360/59.94	.389/9.88
44248-0012	4	4	SNAP-FIT	2.490/63.25	2.360/59.94	.389/9.88
44248-0017	6	2	PRESS-FIT	1.250/31.75	1.120/28.45	.389/9.88
44248-0018	4	2	PRESS-FIT	1.250/31.75	1.120/28.45	.389/9.88
44248-0019	6	4	PRESS-FIT	2.490/63.25	2.360/59.94	.389/9.88
44248-0020	4	4	PRESS-FIT	2.490/63.25	2.360/59.94	.389/9.88

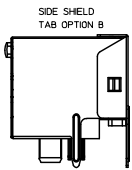
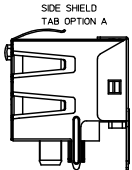
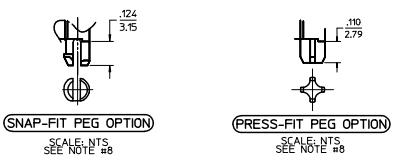


UNSHIELDED WITH LIGHT PIPES

- NOTES:
- MATERIAL: HOUSING: POLYESTER(PPBT), GLASS FILLED, UL94V-0, COLOR: BLACK LIGHT PIPES: POLYCARBONATE, UL-94V2, COLOR: CLEAR TERMINALS: PHOSPHOR BRONZE
 - FINISH: TERMINALS: *SELECT GOLD IN CONTACT AREA: 50 MICRONS (1.27 MICROMETERS) MIN. *SELECT TIN IN PC TAIL AREA: 100 MICRONS (2.54 MICROMETERS) MIN. WITH OVERALL NICKEL UNDERPLATE: 50 MICRONS (1.27 MICROMETERS) MIN. *THE PRIMARY SHIPPING CARTON WILL BE LABELED "COMPLIANT TO ROHS DIRECTIVE 2002/95/EC" AND ELY ANNEX II OF DIRECTIVE 2000/53/EC" CARTONS WITHOUT THIS LABEL MAY CONTAIN PRODUCT WITH TIN-LEAD IN THE PC TAILS.
 - PRODUCT SPECIFICATION AND PROCESSING PARAMETERS: PS-43860-003.
 - PACKAGING SPECIFICATIONS: CONNECTOR ASSEMBLIES IN THERMOFORMED TRAYS PER MOLEX PACKAGING SPECIFICATION PK-44248-004.
 - APPLICATION SPECIFICATION: AS-43860-001
 - ALL UNTOLERANCED DIMENSIONS ARE SHOWN FOR REFERENCE ONLY.
 - CONFORMS TO FCC REGULATION PART 68.5 FOR MODULAR JACKS.
 - MODJACKS AVAILABLE WITH EITHER SNAP-FIT OR PRESS-FIT PEGS. THIS DRAWING SHOWS SNAP-FIT PEGS.
 - PCB LAYOUT AND PANEL CUT-OUT SHOWN ON SHEETS (5) AND (6).
 - THIS PART CONFORMS TO CLASS B REQUIREMENTS OF COSMETIC SPECIFICATION PS-45499-002.

CHGD 04/17 TO 04/19 LHM DESIGNED BY: M. GLOSTER/08/07/08 DRAWN BY: M. GLOSTER/08/07/08 CHECKED BY: J. HELL/08/07/08 APPROVED BY: [Signature] DATE: 08/07/08	QUALITY SYMBOLS	GENERAL TOLERANCES (UNLESS SPECIFIED)	DIMENSION STYLE	SCALE	DESIGN UNITS	THIRD ANGLE PROJECTION
		4 PLACES ± .010 INCH 3 PLACES ± .010 INCH 2 PLACES ± 0.25 INCH 1 PLACE ± .010 INCH ANGULAR ± 1/2°	IN/MM	4:1	INCH	
	DRAWN BY: M MAYO	CHECKED BY: J ROBERTS	DATE: 98/10/06	DATE: 98/10/06	GANGED INVERTED MODJACK ASSEMBLY	
	DRAFT WHERE APPLICABLE MUST REMAIN WITHIN DIMENSIONS		APPROVED BY: J ROBERTS DATE: 98/10/06	MATERIAL NO. SEE CHART DOCUMENT NO. SD-44248-001	MOLEX INCORPORATED SHEET NO. 1 OF 6	

19 18 17 16 15 14 13 12 11 10 9 8 7 6 5 4 3 2 1

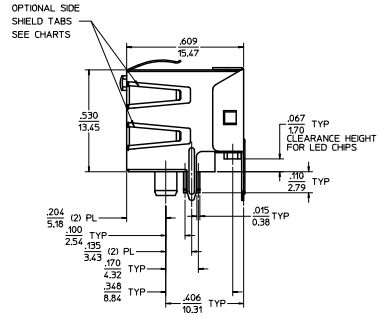
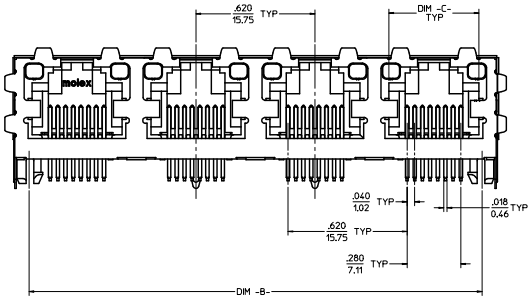
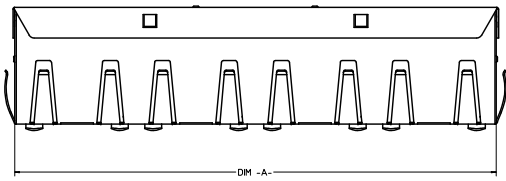


(8) CIRCUIT HOUSING(S)

ASSEMBLY MATERIAL NUMBER	NUMBER OF CIRCUITS	NUMBER OF PORTS	PEG STYLE	SIDE SHIELD TAB OPTION	DIM -A-	DIM -B-	DIM -C-
44248-0029	8	2	SNAP-FIT	A	1.274/32.36	1.120/28.45	.469/11.92
44248-0030	8	4	SNAP-FIT	A	2.514/63.86	2.360/59.94	.469/11.92
44248-0033	8	2	PRESS-FIT	A	1.274/32.36	1.120/28.45	.469/11.92
44248-0034	8	4	PRESS-FIT	A	2.514/63.86	2.360/59.94	.469/11.92

(6) CIRCUIT HOUSING(S)

ASSEMBLY MATERIAL NUMBER	NUMBER OF CIRCUITS	NUMBER OF PORTS	PEG STYLE	SIDE SHIELD TAB OPTION	DIM -A-	DIM -B-	DIM -C-
44248-0037	4	2	SNAP-FIT	A	1.274/32.36	1.120/28.45	.389/9.88
44248-0038	4	2	SNAP-FIT	A	1.274/32.36	1.120/28.45	.389/9.88
44248-0039	6	4	SNAP-FIT	A	2.514/63.86	2.360/59.94	.389/9.88
44248-0040	4	4	SNAP-FIT	A	2.514/63.86	2.360/59.94	.389/9.88
44248-0045	6	2	PRESS-FIT	A	1.274/32.36	1.120/28.45	.389/9.88
44248-0046	4	2	PRESS-FIT	A	1.274/32.36	1.120/28.45	.389/9.88
44248-0047	6	4	PRESS-FIT	A	2.514/63.86	2.360/59.94	.389/9.88
44248-0048	4	4	PRESS-FIT	A	2.514/63.86	2.360/59.94	.389/9.88



- NOTES:
- MATERIAL: HOUSING: POLYESTER(PBT), GLASS FILLED, UL94V-0, COLOR: BLACK
LIGHT PIPES: POLYCARBONATE, UL-94V2, COLOR: CLEAR
TERMINALS: PHOSPHOR BRONZE
SHIELD: BRASS
 - TERMINALS:
SELECT GOLD IN CONTACT AREA: 50 MICRONS (127 MICROMETERS) MIN.
*SELECT TIN IN PC TAIL AREA: 100 MICRONS (254 MICROMETERS) MIN.
WITH OVERALL NICKEL UNDERPLATE: 50 MICRONS (127 MICROMETERS) MIN.
SHIELD:
*100 MICRONS (254 MICROMETERS) NICKEL OVER 50 MICRONS (127 MICROMETERS) COPPER UNDERPLATE PCB GROUND TABS DIPPED IN TIN
*THE PRIMARY SHIPPING CARTON WILL BE LABELED COMPLIANT TO RoHS DIRECTIVE 2002/95/EC AND ELV ANNEX II OF DIRECTIVE 2000/53/EC. CARTONS WITHOUT THIS LABEL MAY CONTAIN PRODUCT WITH TIN-LEAD IN THE PC TAILS AND/OR SHIELD.
 - PRODUCT SPECIFICATION AND PROCESSING PARAMETERS: PS-43860-003.
 - PACKAGING SPECIFICATION: CONNECTOR ASSEMBLIES IN THERMOFORMED TRAYS PER MOLEX PACKAGING SPECIFICATION PS-44248-004.
 - APPLICATION SPECIFICATION: AS-43860-001
 - ALL UNTOLERANCED DIMENSIONS ARE SHOWN FOR REFERENCE ONLY.
 - CONFORMS TO FCC REGULATION PART 68.5 FOR MODULAR JACKS.
 - MOD JACKS AVAILABLE WITH EITHER SNAP-FIT OR PRESS-FIT PEGS. THIS DRAWING SHOWS SNAP-FIT PEGS.
 - PCB LAYOUT AND PANEL CUT-OUT SHOWN ON SHEETS (D) AND (E).
 - THIS PART CONFORMS TO CLASS B REQUIREMENTS OF COSMETIC SPECIFICATION PS-45499-002.

SHIELDED WITH LIGHT PIPES

QUALITY SYMBOLS 	GENERAL TOLERANCES (UNLESS SPECIFIED)		DIMENSION STYLE		SCALE	DESIGN UNITS	THIRD ANGLE PROJECTION
			IN/MM	4:1	INCH		
	4 PLACES ± .010	± .010	DRAWN BY	DATE	GANGED INVERTED MODJACK ASSEMBLY		
	3 PLACES ± .025	± .025	CHECKED BY	DATE	MOLEX INCORPORATED		
2 PLACES ± .050	± .050	APPROVED BY	DATE	MATERIAL NO. DOCUMENT NO. SHEET NO.			
1 PLACE ± .100	± .100	ROBERTS	98/10/06	SD-44248-001 2 OF 6			
DRAFT WHERE APPLICABLE MUST REMAIN WITHIN DIMENSIONS		SEE CHART		THIS DRAWING CONTAINS INFORMATION THAT IS PROPRIETARY TO MOLEX INCORPORATED AND SHOULD NOT BE USED WITHOUT WRITTEN PERMISSION			



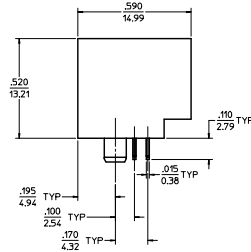
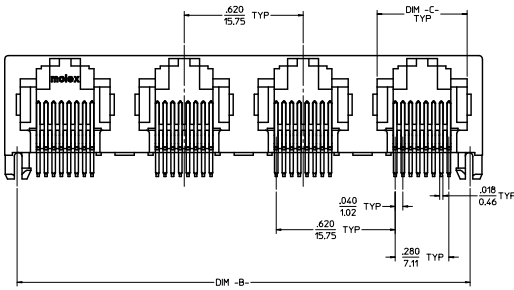
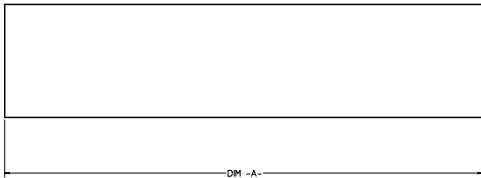
SNAP-FIT PEG OPTION
SCALE: NTS
SEE NOTE #7



PRESS-FIT PEG OPTION
SCALE: NTS
SEE NOTE #7

8 CIRCUIT HOUSING(S)						
ASSEMBLY MATERIAL NUMBER	NUMBER OF CIRCUITS	NUMBER OF PORTS	PEG STYLE	DIM -A-	DIM -B-	DIM -C-
44248-0057	8	2	SNAP-FIT	1250/3175	1120/28.45	.469/11.92
44248-0058	8	4	SNAP-FIT	2490/63.25	2360/59.94	.469/11.92
44248-0061	8	2	PRESS-FIT	1250/3175	1120/28.45	.469/11.92
44248-0062	8	4	PRESS-FIT	2490/63.25	2360/59.94	.469/11.92

6 CIRCUIT HOUSING(S)						
ASSEMBLY MATERIAL NUMBER	NUMBER OF CIRCUITS	NUMBER OF PORTS	PEG STYLE	DIM -A-	DIM -B-	DIM -C-
44248-0065	6	2	SNAP-FIT	1250/3175	1120/28.45	.389/9.88
44248-0066	4	2	SNAP-FIT	1250/3175	1120/28.45	.389/9.88
44248-0067	6	4	SNAP-FIT	2490/63.25	2360/59.94	.389/9.88
44248-0068	4	4	SNAP-FIT	2490/63.25	2360/59.94	.389/9.88
44248-0073	6	2	PRESS-FIT	1250/3175	1120/28.45	.389/9.88
44248-0074	4	2	PRESS-FIT	1250/3175	1120/28.45	.389/9.88
44248-0075	6	4	PRESS-FIT	2490/63.25	2360/59.94	.389/9.88
44248-0076	4	4	PRESS-FIT	2490/63.25	2360/59.94	.389/9.88

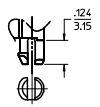


- NOTES:
- MATERIAL: HOUSING: POLYESTER(PBT), GLASS FILLED, UL94V-0, COLOR: BLACK
TERMINALS: PHOSPHOR BRONZE
 - FINISH: TERMINALS: SELECT GOLD IN CONTACT AREA: 50 MICRONS (1.27 MICROMETERS) MIN. SELECT TIN IN PC TAIL AREA: 100 MICRONS (2.54 MICROMETERS) MIN. WITH OVERALL NICKEL UNDERPLATE: 50 MICRONS (1.27 MICROMETERS) MIN. *THE PRIMARY SHIPPING CARTON WILL BE LABELED COMPLIANT TO RoHS DIRECTIVE 2002/95/EC AND ELV ANNEX II OF DIRECTIVE 2000/53/EC. CARTONS WITHOUT THIS LABEL MAY CONTAIN PRODUCT WITH TIN LEAD IN THE PC TAILS.
 - PRODUCT SPECIFICATION AND PROCESSING PARAMETERS: PS-43860-003.
 - PACKAGING SPECIFICATION: CONNECTOR ASSEMBLIES IN THERMOFORMED TRAYS PER MOLEX PACKAGING SPECIFICATION PK-44248-004.
 - ALL UNTOLERANCED DIMENSIONS ARE SHOWN FOR REFERENCE ONLY.
 - CONFORMS TO FCC REGULATION PART 68.5 FOR MODULAR JACKS.
 - MODJACKS AVAILABLE WITH EITHER SNAP-FIT OR PRESS-FIT PEGS. THIS DRAWING SHOWS SNAP-FIT PEGS.
 - PCB LAYOUT AND PANEL CUT-OUT SHOWN ON SHEETS (5) AND (6).
 - THIS PART CONFORMS TO CLASS B REQUIREMENTS OF COSMETIC SPECIFICATION PS-45499-002.

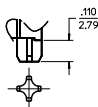
UNSHIELDED

REEL SHEET 1 MFG. PART NO. 4482 DRAWN: MOLEX/ELR 2008/10/06 CHKD: BELL 2008/10/06 APPROV: SMITH 2008/10/06 DESIG: 44248-001	QUALITY SYMBOLS	GENERAL TOLERANCES (UNLESS SPECIFIED)	DIMENSION STYLE	SCALE	DESIGN UNITS	THIRD ANGLE PROJECTION
		4 PLACES ± .010 INCH 3 PLACES ± .010 INCH 2 PLACES ± 0.25 INCH 1 PLACE ± .010 INCH ANGULAR ±1/2°	IN/MM DRAWN BY: MMAYO DATE: 98/10/06 CHECKED BY: JROBERTS DATE: 98/10/06 APPROVED BY: JROBERTS DATE: 98/10/06	INCH 4:1	INCH	
	DRAFT WHERE APPLICABLE MUST REMAIN WITHIN DIMENSIONS		SEE CHART	GANGED INVERTED MODJACK ASSEMBLY MOLEX INCORPORATED MATERIAL NO. SD-44248-001 DOCUMENT NO.		
	THIS DRAWING CONTAINS INFORMATION THAT IS PROPRIETARY TO MOLEX INCORPORATED AND SHOULD NOT BE USED WITHOUT WRITTEN PERMISSION			SHEET NO. 3 OF 6		

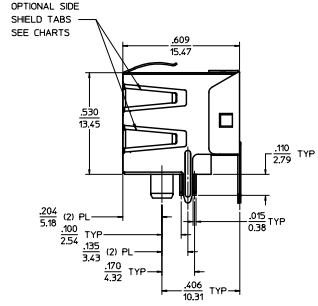
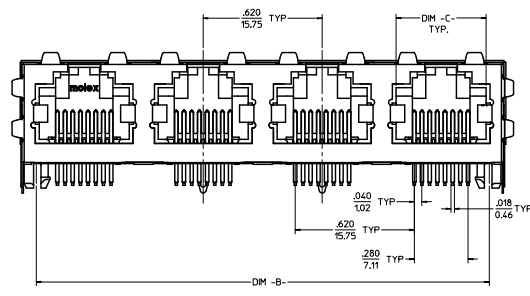
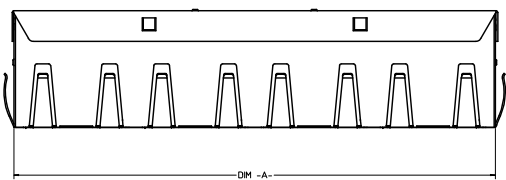
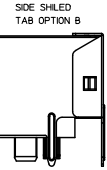
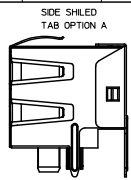
20 19 18 17 16 15 14 13 12 11 10 9 8 7 6 5 4 3 2 1



(SNAP-FIT PEG OPTION)
SCALE: NTS, SEE NOTE #7



(PRESS-FIT PEG OPTION)
SCALE: NTS, SEE NOTE #7



- NOTES:
 1) MATERIAL:
 HOUSING: POLYESTER(PBT), GLASS FILLED, UL94V-0. COLOR: BLACK
 TERMINALS: PHOSPHOR BRONZE
 SHIELD: BRASS
 2) FINISH:
 TERMINALS:
 *SELECT GOLD IN CONTACT AREA: 50 MICRONS (127 MICROMETERS) MIN.
 *SELECT TIN IN PC TAIL AREA: 100 MICRONS (254 MICROMETERS) MIN.
 *WITH OVERALL NICKEL UNDERPLATE: 50 MICRONS (127 MICROMETERS) MIN.
 SHIELD:
 *100 MICRONS (254 MICROMETERS) NICKEL OVER 50 MICRONS (127 MICROMETERS) COPPER UNDERLAYER PCB GROUND TABS DIPPED IN TIN
 *THE PRIMARY SHIPPING CARTON WILL BE LABELED COMPLIANT TO ROHS DIRECTIVE 2002/95/EC AND ELV ANNEX I OF DIRECTIVE 2000/53/EC. CARTONS WITHOUT THIS LABEL MAY CONTAIN PRODUCT WITH TIN-LEAD IN THE PC TAILS AND/OR SHIELD.
 3) PRODUCT SPECIFICATION AND PROCESSING PARAMETERS: PS-43860-003.
 4) PACKAGING SPECIFICATION:
 CONNECTOR ASSEMBLIES IN THERMOFORMED TRAYS PER MOLEX PACKAGING SPECIFICATION PK-42248-004.
 5) ALL UNTOLERANCED DIMENSIONS ARE SHOWN FOR REFERENCE ONLY.
 6) CONFORMS TO FCC REGULATION PART 68.5 FOR MODULAR JACKS.
 7) MODULARS AVAILABLE WITH EITHER SNAP-FIT OR PRESS-FIT PEGS.
 THIS DRAWING SHOWS SNAP-FIT PEGS.
 8) PCB LAYOUT AND PANEL CUT-OUT SHOWN ON SHEETS (S) AND (6).
 9) THIS PART CONFORMS TO CLASS B REQUIREMENTS OF COSMETIC SPECIFICATION PS-45499-002.

(8) CIRCUIT HOUSING(S)

X = NOT TOOLED	ASSEMBLY MATERIAL NUMBER	NUMBER OF CIRCUITS	NUMBER OF PORTS	PEG STYLE	SIDE SHIELD TAB OPTION	DIM -A-	DIM -B-	DIM -C-
	44248-0085	8	2	SNAP-FIT	A	1.274/32.36	1.120/28.45	.469/11.92
	44248-0086	8	4	SNAP-FIT	A	2.514/63.86	2.360/59.94	.469/11.92
	44248-0089	8	2	PRESS-FIT	A	1.274/32.36	1.120/28.45	.469/11.92
	44248-0090	8	4	PRESS-FIT	A	2.514/63.86	2.360/59.94	.469/11.92
X	44248-0119	8	4	PRESS-FIT	B	2.514/63.86	2.360/59.94	.469/11.92

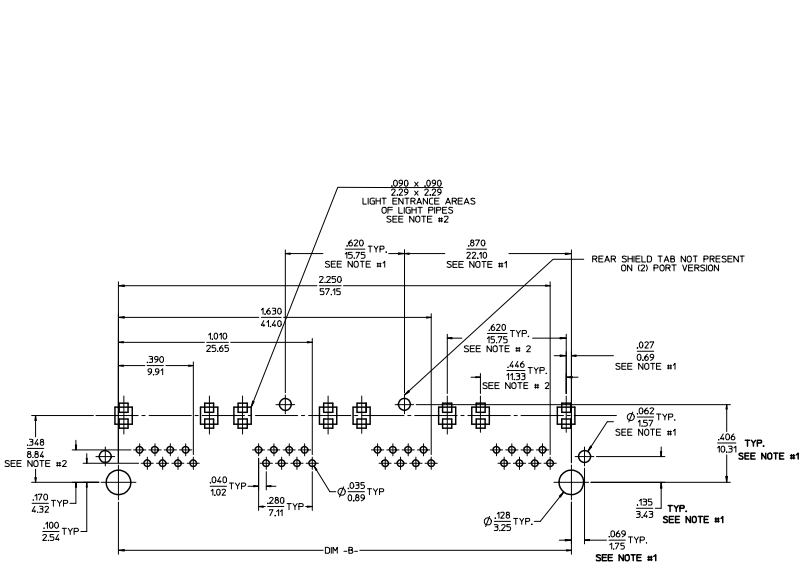
(6) CIRCUIT HOUSING(S)

ASSEMBLY MATERIAL NUMBER	NUMBER OF CIRCUITS	NUMBER OF PORTS	PEG STYLE	SIDE SHIELD TAB OPTION	DIM -A-	DIM -B-	DIM -C-
44248-0093	6	2	SNAP-FIT	A	1.274/32.36	1.120/28.45	.389/9.88
44248-0094	4	2	SNAP-FIT	A	1.274/32.36	1.120/28.45	.389/9.88
44248-0095	6	4	SNAP-FIT	A	2.514/63.86	2.360/59.94	.389/9.88
44248-0096	4	4	SNAP-FIT	A	2.514/63.86	2.360/59.94	.389/9.88
44248-0101	6	2	PRESS-FIT	A	1.274/32.36	1.120/28.45	.389/9.88
44248-0102	4	2	PRESS-FIT	A	1.274/32.36	1.120/28.45	.389/9.88
44248-0103	6	4	PRESS-FIT	A	2.514/63.86	2.360/59.94	.389/9.88
44248-0104	4	4	PRESS-FIT	A	2.514/63.86	2.360/59.94	.389/9.88

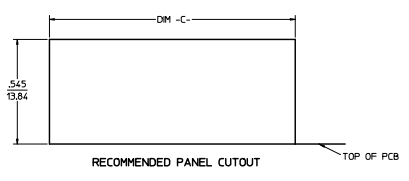
SHIELDED

QUALITY SYMBOLS ▽=0 ▽=0.1 ▽=0.25 ▽=0.5 ▽=1 ▽=1.5 ▽=2 ▽=3 ▽=4 ▽=5 ▽=6 ▽=7 ▽=8 ▽=9 ▽=10 ▽=12 ▽=15 ▽=20 ▽=25 ▽=30 ▽=35 ▽=40 ▽=45 ▽=50 ▽=60 ▽=70 ▽=80 ▽=90 ▽=100 ▽=120 ▽=150 ▽=200 ▽=250 ▽=300 ▽=400 ▽=500 ▽=600 ▽=800 ▽=1000 ▽=1200 ▽=1500 ▽=2000 ▽=2500 ▽=3000 ▽=4000 ▽=5000 ▽=6000 ▽=8000 ▽=10000 ▽=12000 ▽=15000 ▽=20000 ▽=25000 ▽=30000 ▽=40000 ▽=50000 ▽=60000 ▽=80000 ▽=100000 ▽=120000 ▽=150000 ▽=200000 ▽=250000 ▽=300000 ▽=400000 ▽=500000 ▽=600000 ▽=800000 ▽=1000000 ▽=1200000 ▽=1500000 ▽=2000000 ▽=2500000 ▽=3000000 ▽=4000000 ▽=5000000 ▽=6000000 ▽=8000000 ▽=10000000 ▽=12000000 ▽=15000000 ▽=20000000 ▽=25000000 ▽=30000000 ▽=40000000 ▽=50000000 ▽=60000000 ▽=80000000 ▽=100000000 ▽=120000000 ▽=150000000 ▽=200000000 ▽=250000000 ▽=300000000 ▽=400000000 ▽=500000000 ▽=600000000 ▽=800000000 ▽=1000000000 ▽=1200000000 ▽=1500000000 ▽=2000000000 ▽=2500000000 ▽=3000000000 ▽=4000000000 ▽=5000000000 ▽=6000000000 ▽=8000000000 ▽=10000000000 ▽=12000000000 ▽=15000000000 ▽=20000000000 ▽=25000000000 ▽=30000000000 ▽=40000000000 ▽=50000000000 ▽=60000000000 ▽=80000000000 ▽=100000000000 ▽=120000000000 ▽=150000000000 ▽=200000000000 ▽=250000000000 ▽=300000000000 ▽=400000000000 ▽=500000000000 ▽=600000000000 ▽=800000000000 ▽=1000000000000 ▽=1200000000000 ▽=1500000000000 ▽=2000000000000 ▽=2500000000000 ▽=3000000000000 ▽=4000000000000 ▽=5000000000000 ▽=6000000000000 ▽=8000000000000 ▽=10000000000000 ▽=12000000000000 ▽=15000000000000 ▽=20000000000000 ▽=25000000000000 ▽=30000000000000 ▽=40000000000000 ▽=50000000000000 ▽=60000000000000 ▽=80000000000000 ▽=100000000000000 ▽=120000000000000 ▽=150000000000000 ▽=200000000000000 ▽=250000000000000 ▽=300000000000000 ▽=400000000000000 ▽=500000000000000 ▽=600000000000000 ▽=800000000000000 ▽=1000000000000000 ▽=1200000000000000 ▽=1500000000000000 ▽=2000000000000000 ▽=2500000000000000 ▽=3000000000000000 ▽=4000000000000000 ▽=5000000000000000 ▽=6000000000000000 ▽=8000000000000000 ▽=10000000000000000 ▽=12000000000000000 ▽=15000000000000000 ▽=20000000000000000 ▽=25000000000000000 ▽=30000000000000000 ▽=40000000000000000 ▽=50000000000000000 ▽=60000000000000000 ▽=80000000000000000 ▽=100000000000000000 ▽=120000000000000000 ▽=150000000000000000 ▽=200000000000000000 ▽=250000000000000000 ▽=300000000000000000 ▽=400000000000000000 ▽=500000000000000000 ▽=600000000000000000 ▽=800000000000000000 ▽=1000000000000000000 ▽=1200000000000000000 ▽=1500000000000000000 ▽=2000000000000000000 ▽=2500000000000000000 ▽=3000000000000000000 ▽=4000000000000000000 ▽=5000000000000000000 ▽=6000000000000000000 ▽=8000000000000000000 ▽=10000000000000000000 ▽=12000000000000000000 ▽=15000000000000000000 ▽=20000000000000000000 ▽=25000000000000000000 ▽=30000000000000000000 ▽=40000000000000000000 ▽=50000000000000000000 ▽=60000000000000000000 ▽=80000000000000000000 ▽=100000000000000000000 ▽=120000000000000000000 ▽=150000000000000000000 ▽=200000000000000000000 ▽=250000000000000000000 ▽=300000000000000000000 ▽=400000000000000000000 ▽=500000000000000000000 ▽=600000000000000000000 ▽=800000000000000000000 ▽=1000000000000000000000 ▽=1200000000000000000000 ▽=1500000000000000000000 ▽=2000000000000000000000 ▽=2500000000000000000000 ▽=3000000000000000000000 ▽=4000000000000000000000 ▽=5000000000000000000000 ▽=6000000000000000000000 ▽=8000000000000000000000 ▽=10000000000000000000000 ▽=12000000000000000000000 ▽=15000000000000000000000 ▽=20000000000000000000000 ▽=25000000000000000000000 ▽=30000000000000000000000 ▽=40000000000000000000000 ▽=50000000000000000000000 ▽=60000000000000000000000 ▽=80000000000000000000000 ▽=100000000000000000000000 ▽=120000000000000000000000 ▽=150000000000000000000000 ▽=200000000000000000000000 ▽=250000000000000000000000 ▽=300000000000000000000000 ▽=400000000000000000000000 ▽=500000000000000000000000 ▽=600000000000000000000000 ▽=800000000000000000000000 ▽=1000000000000000000000000 ▽=1200000000000000000000000 ▽=1500000000000000000000000 ▽=2000000000000000000000000 ▽=2500000000000000000000000 ▽=3000000000000000000000000 ▽=4000000000000000000000000 ▽=5000000000000000000000000 ▽=6000000000000000000000000 ▽=8000000000000000000000000 ▽=10000000000000000000000000 ▽=12000000000000000000000000 ▽=15000000000000000000000000 ▽=20000000000000000000000000 ▽=25000000000000000000000000 ▽=30000000000000000000000000 ▽=40000000000000000000000000 ▽=50000000000000000000000000 ▽=60000000000000000000000000 ▽=80000000000000000000000000 ▽=100000000000000000000000000 ▽=120000000000000000000000000 ▽=150000000000000000000000000 ▽=200000000000000000000000000 ▽=250000000000000000000000000 ▽=300000000000000000000000000 ▽=400000000000000000000000000 ▽=500000000000000000000000000 ▽=600000000000000000000000000 ▽=800000000000000000000000000 ▽=1000000000000000000000000000 ▽=1200000000000000000000000000 ▽=1500000000000000000000000000 ▽=2000000000000000000000000000 ▽=2500000000000000000000000000 ▽=3000000000000000000000000000 ▽=4000000000000000000000000000 ▽=5000000000000000000000000000 ▽=6000000000000000000000000000 ▽=8000000000000000000000000000 ▽=10000000000000000000000000000 ▽=12000000000000000000000000000 ▽=15000000000000000000000000000 ▽=20000000000000000000000000000 ▽=25000000000000000000000000000 ▽=30000000000000000000000000000 ▽=40000000000000000000000000000 ▽=50000000000000000000000000000 ▽=60000000000000000000000000000 ▽=80000000000000000000000000000 ▽=100000000000000000000000000000 ▽=120000000000000000000000000000 ▽=150000000000000000000000000000 ▽=200000000000000000000000000000 ▽=250000000000000000000000000000 ▽=300000000000000000000000000000 ▽=400000000000000000000000000000 ▽=500000000000000000000000000000 ▽=600000000000000000000000000000 ▽=800000000000000000000000000000 ▽=1000000000000000000000000000000 ▽=1200000000000000000000000000000 ▽=1500000000000000000000000000000 ▽=2000000000000000000000000000000 ▽=2500000000000000000000000000000 ▽=3000000000000000000000000000000 ▽=4000000000000000000000000000000 ▽=5000000000000000000000000000000 ▽=6000000000000000000000000000000 ▽=8000000000000000000000000000000 ▽=10000000000000000000000000000000 ▽=12000000000000000000000000000000 ▽=15000000000000000000000000000000 ▽=20000000000000000000000000000000 ▽=25000000000000000000000000000000 ▽=30000000000000000000000000000000 ▽=40000000000000000000000000000000 ▽=50000000000000000000000000000000 ▽=60000000000000000000000000000000 ▽=80000000000000000000000000000000 ▽=100000000000000000000000000000000 ▽=120000000000000000000000000000000 ▽=150000000000000000000000000000000 ▽=200000000000000000000000000000000 ▽=250000000000000000000000000000000 ▽=300000000000000000000000000000000 ▽=400000000000000000000000000000000 ▽=500000000000000000000000000000000 ▽=600000000000000000000000000000000 ▽=800000000000000000000000000000000 ▽=1000000000000000000000000000000000 ▽=1200000000000000000000000000000000 ▽=1500000000000000000000000000000000 ▽=2000000000000000000000000000000000 ▽=2500000000000000000000000000000000 ▽=3000000000000000000000000000000000 ▽=4000000000000000000000000000000000 ▽=5000000000000000000000000000000000 ▽=6000000000000000000000000000000000 ▽=8000000000000000000000000000000000 ▽=10000000000000000000000000000000000 ▽=12000000000000000000000000000000000 ▽=15000000000000000000000000000000000 ▽=20000000000000000000000000000000000 ▽=25000000000000000000000000000000000 ▽=30000000000000000000000000000000000 ▽=40000000000000000000000000000000000 ▽=50000000000000000000000000000000000 ▽=60000000000000000000000000000000000 ▽=80000000000000000000000000000000000 ▽=100000000000000000000000000000000000 ▽=120000000000000000000000000000000000 ▽=150000000000000000000000000000000000 ▽=200000000000000000000000000000000000 ▽=250000000000000000000000000000000000 ▽=300000000000000000000000000000000000 ▽=400000000000000000000000000000000000 ▽=500000000000000000000000000000000000 ▽=600000000000000000000000000000000000 ▽=800000000000000000000000000000000000 ▽=1000000000000000000000000000000000000 ▽=1200000000000000000000000000000000000
--

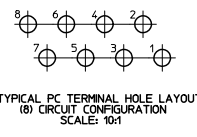
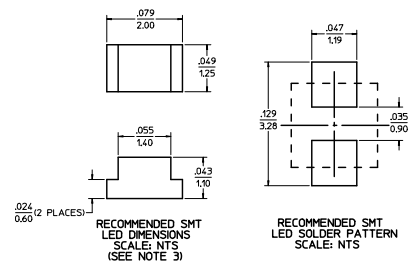
20 19 18 17 16 15 14 13 12 11 10 9 8 7 6 5 4 3 2 1



8 CIRCUIT PCB LAYOUT: COMPONENT SIDE
 RECOMMENDED PCB THICKNESS: .062/1.57
 TOLERANCE ±.003/.076 UNLESS OTHERWISE SPECIFIED



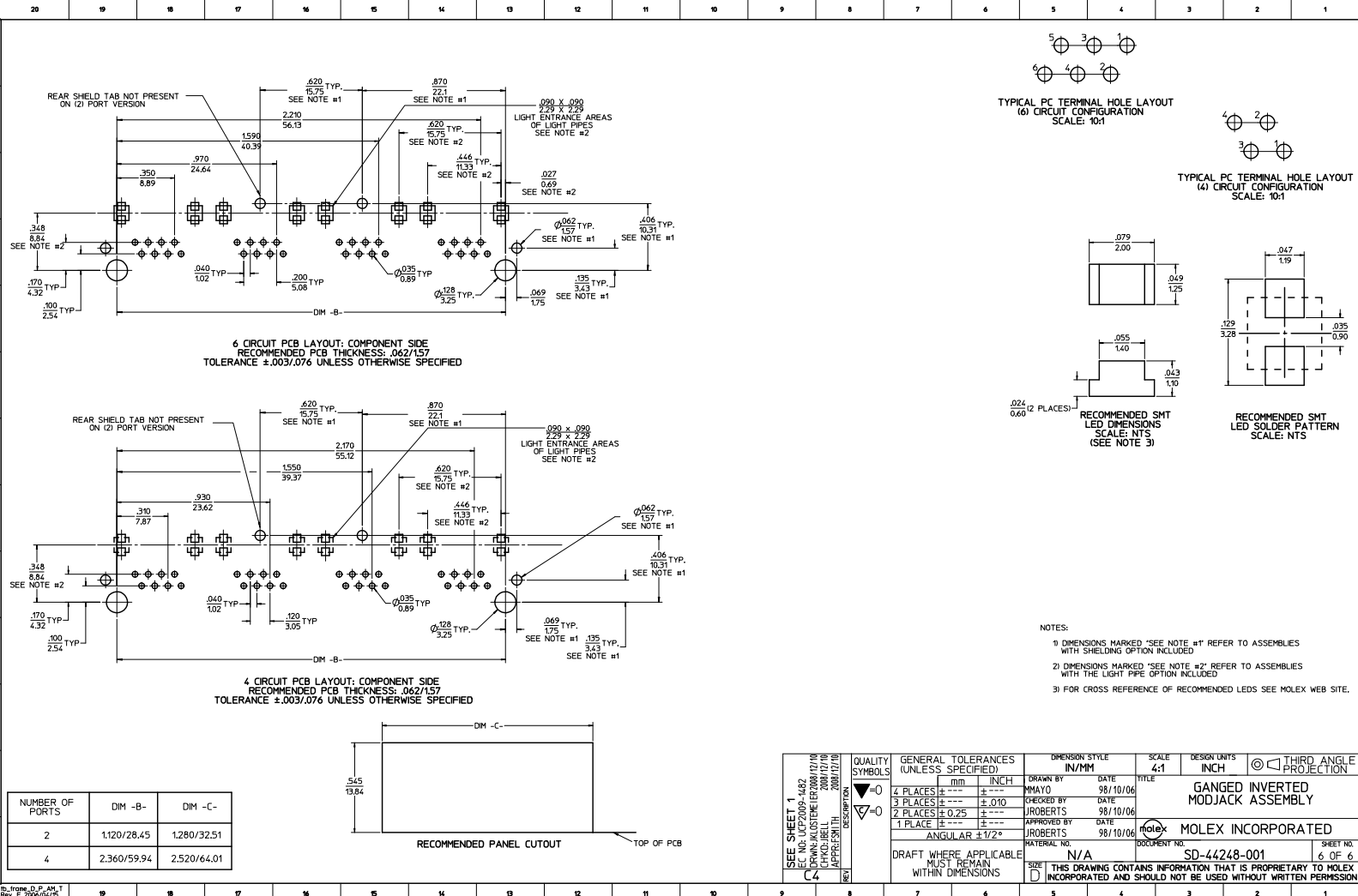
NUMBER OF PORTS	DIM -B-	DIM -C-
2	1.120/28.45	1.280/32.51
4	2.360/59.94	2.520/64.01



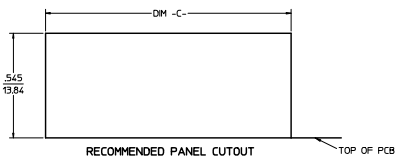
- NOTES:
- 1) DIMENSIONS MARKED "SEE NOTE #1" REFER TO ASSEMBLIES WITH THE SHIELDING OPTION INCLUDED
 - 2) DIMENSIONS MARKED "SEE NOTE #2" REFER TO ASSEMBLIES WITH THE LIGHT PIPE OPTION INCLUDED
 - 3) FOR CROSS REFERENCE OF RECOMMENDED LEADS SEE MOLEX WEB SITE.

01:Frame_D.P. AH.T
 Rev. E 2006/04/15

SHEET 1 4 MOLEX INCORPORATED 2008/12/09 APPROVED: [Signature]	QUALITY SYMBOLS	GENERAL TOLERANCES (UNLESS SPECIFIED)	DIMENSION STYLE	SCALE	DESIGN UNITS	THIRD ANGLE PROJECTION	
	4 PLACES ± .010 3 PLACES ± .010 2 PLACES ± 0.25 1 PLACE ± .010	INCH IN/MM INCH INCH	DRAWN BY: MMAYO CHECKED BY: JROBERTS APPROVED BY: JROBERTS DATE: 98/10/06 DATE: 98/10/06 DATE: 98/10/06	IN/MM INCH	4:1	INCH	GANGED INVERTED MODJACK ASSEMBLY
	DRAFT WHERE APPLICABLE MUST REMAIN WITHIN DIMENSIONS	MATERIAL NO. N/A DOCUMENT NO. SD-44248-001	MOLEX INCORPORATED	SHEET NO. 5 OF 6	THIS DRAWING CONTAINS INFORMATION THAT IS PROPRIETARY TO MOLEX INCORPORATED AND SHOULD NOT BE USED WITHOUT WRITTEN PERMISSION		



NUMBER OF PORTS	DIM -B-	DIM -C-
2	1.120/28.45	1.280/32.51
4	2.360/59.94	2.520/64.01



QUALITY SYMBOLS ▽=0 ▽=0.05 ▽=0.10 ▽=0.15 ▽=0.20 ▽=0.25 ▽=0.30 ▽=0.35 ▽=0.40 ▽=0.45 ▽=0.50 ▽=0.55 ▽=0.60 ▽=0.65 ▽=0.70 ▽=0.75 ▽=0.80 ▽=0.85 ▽=0.90 ▽=0.95 ▽=1.00	GENERAL TOLERANCES (UNLESS SPECIFIED) 4 PLACES ± .010 INCH 3 PLACES ± .015 INCH 2 PLACES ± .025 INCH 1 PLACE ± .050 INCH ANGULAR ± 1/2°	DIMENSION STYLE IN/MM DRAWN BY MAYO DATE 98/10/06 CHECKED BY ROBERTS DATE 98/10/06 APPROVED BY ROBERTS DATE 98/10/06	SCALE 4:1 DESIGN UNITS INCH THIRD ANGLE PROJECTION	
	DRAFT WHERE APPLICABLE MUST REMAIN WITHIN DIMENSIONS			MATERIAL NO. N/A DOCUMENT NO. SD-44248-001
	THIS DRAWING CONTAINS INFORMATION THAT IS PROPRIETARY TO MOLEX INCORPORATED AND SHOULD NOT BE USED WITHOUT WRITTEN PERMISSION			SHEET NO. 6 OF 6
	SEE SHEET 1 MEX-44248-001-4482 DRAWING MODIFIED (E) 2008/12/10 CHECKED BY: JHELL 2008/12/10 APPROVED BY: JHELL 2008/12/10			GANGED INVERTED MODJACK ASSEMBLY MOLEX INCORPORATED