

Distributed by:

**JAMECO**<sup>®</sup>  
ELECTRONICS

**www.Jameco.com ♦ 1-800-831-4242**

The content and copyrights of the attached  
material are the property of its owner.

Jameco Part Number 1300751

## FEATURES AND SPECIFICATIONS

### Features and Benefits

- Plug latch on top
- Shortened leads with bottom contacts
- Industry compatible
- RJ45 meets category 5 for Fast Ethernet
- Enhanced panel grounding tabs on shield
- Shielding meets IEC 950, UL 1863 and CSA 233

### Reference Information

Product Specification: PS-43860-003  
 Packaging: Tray  
 UL File No.: E107635  
 CSA File No.: LR19980  
 Designed In: Inches

### Electrical

Voltage: 125V  
 Current: 1.5A  
 Contact Resistance: 10mΩ max.  
 Dielectric Withstanding Voltage: 1000V AC  
 Insulation Resistance: 500 MΩ min.

### Mechanical

Durability: 500 cycles

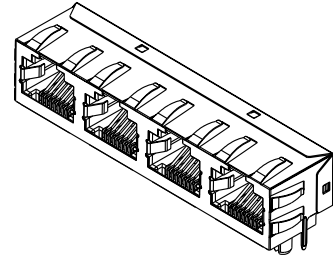
### Physical

Housing: Black Polyester, UL 94V-0  
 Plating: Contact Area—1.27μm (50μ") min. Gold  
 Solder Tail Area—1.27μm (50μ") min. Tin/Lead  
 Operating Temperature: -40 to +85°C

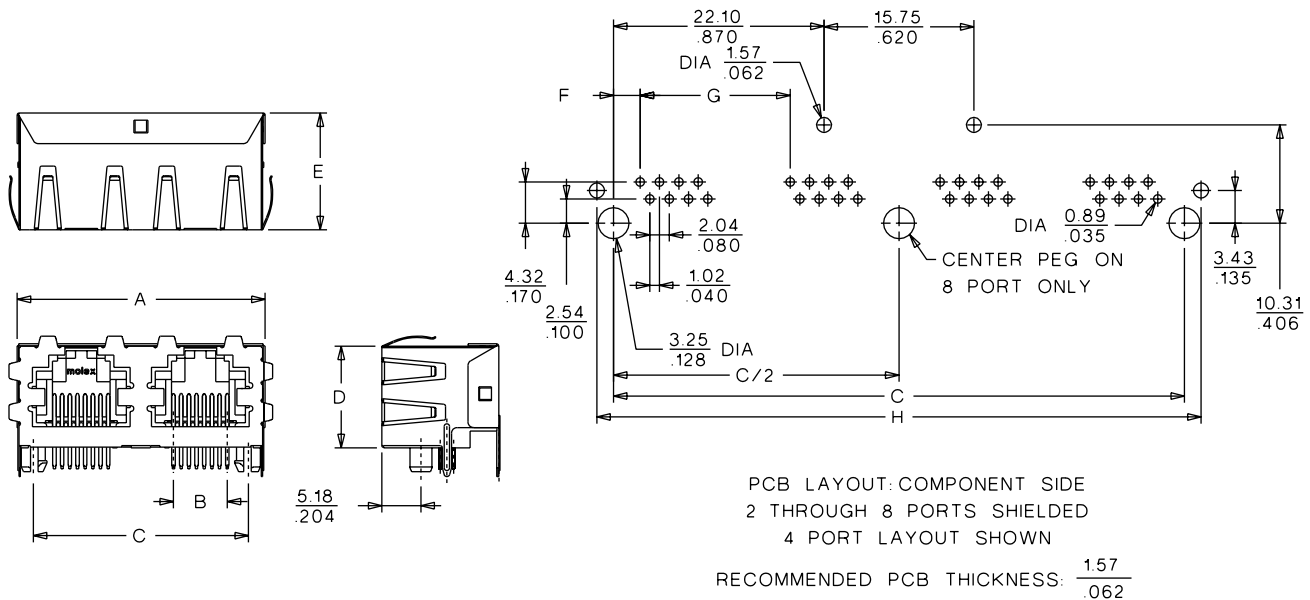


# 44248

## Ganged, Right Angle Low Profile Inverted Shielded and Unshielded Versions



## CATALOG DRAWING (FOR REFERENCE ONLY)



Modular Plugs and Jacks



## ORDERING INFORMATION AND DIMENSIONS

Circuits	Loaded Contacts	No. of Ports	Center peg	Order No.				Dimension							
				Unshielded		Shielded		A	B	C	D	E	F	G	H
				Press Fit	Snap Fit	Press Fit	Snap Fit								
6	4	2		44248-0074	44248-0066			31.75 (1.25)	3.03 (.120)	28.45 (1.120)	13.21 (.520)	14.99 (.590)	4.83 (.190)	15.75 (.620)	
	4	2				44248-0102	44248-0094	32.36 (1.27)	3.03 (.120)	28.45 (1.120)	13.45 (.530)	15.47 (.609)	4.83 (.190)	15.75 (.620)	31.95 (1.25)
	6	2		44248-0073	44248-0065			31.75 (1.25)	5.07 (.200)	28.45 (1.120)	13.21 (.520)	14.99 (.590)	3.81 (.150)	15.75 (.620)	
	6	2				44248-0101	44248-0093	32.36 (1.27)	5.07 (.200)	28.45 (1.120)	13.45 (.530)	15.47 (.609)	3.81 (.150)	15.75 (.620)	31.95 (1.25)
8	8	2		44248-0061	44248-0057			31.75 (1.25)	7.11 (.280)	28.45 (1.120)	13.21 (.520)	14.99 (.590)	2.79 (.110)	15.75 (.620)	
	8	2				44248-0089	44248-0085	32.36 (1.27)	7.11 (.280)	28.45 (1.120)	13.45 (.530)	15.47 (.609)	2.79 (.110)	15.75 (.620)	31.95 (1.25)
	8	4		44248-0062	44248-0058			63.25 (2.49)	7.11 (.280)	59.94 (2.360)	13.21 (.520)	14.99 (.590)	2.79 (.110)	15.75 (.620)	
	8	4				44248-0090	44248-0086	63.86 (2.51)	7.11 (.280)	59.94 (2.360)	13.45 (.530)	15.47 (.609)	2.79 (.110)	15.75 (.620)	63.44 (2.49)
	8	6		44248-0063	44248-0059			94.74 (3.73)	7.11 (.280)	91.44 (3.600)	13.21 (.520)	14.99 (.590)	2.79 (.110)	15.75 (.620)	
	8	6				44248-0091	44248-0087	95.35 (3.75)	7.11 (.280)	91.44 (3.600)	13.45 (.530)	15.47 (.609)	2.79 (.110)	15.75 (.620)	94.94 (3.73)
	8	8		44248-0114	44248-0113			126.24 (4.97)	7.11 (.280)	122.94 (4.840)	13.21 (.520)	14.99 (.590)	2.79 (.110)	15.75 (.620)	
	8	8				44248-0116	44248-0115	126.85 (4.99)	7.11 (.280)	122.94 (4.840)	13.45 (.530)	15.47 (.609)	2.79 (.110)	15.75 (.620)	126.44 (4.97)
	8	8	Yes	44248-0064	44248-0060			126.24 (4.97)	7.11 (.280)	122.94 (4.840)	13.21 (.520)	14.99 (.590)	2.79 (.110)	15.75 (.620)	
	8	8	Yes			44248-0092	44248-0088	126.85 (4.99)	7.11 (.280)	122.94 (4.840)	13.45 (.530)	15.47 (.609)	2.79 (.110)	15.75 (.620)	126.44 (4.97)



# PRODUCT SPECIFICATION

## INVERTED RIGHT ANGLE MODULAR JACKS

### 1.0 SCOPE

This Product Specification covers the 1.02 mm (.040 inch) centerline (pitch) printed circuit board (PCB) modular jack connector series with selective gold and tin-lead plating.

### 2.0 PRODUCT DESCRIPTION

#### 2.1 PRODUCT NAME AND SERIES NUMBER(S)

Single Port Inverted Modular Jack	43860
Single Port Inverted Mini-PCI Modular Jack	44380
Dual Port Inverted Modular Jack	43814
Ganged Inverted Modular Jack	44248
Ganged Inverted Modular Jack (RJ-45/RJ-11 Combination)	44580
Single Port Inverted Modular Jack with Keep-out Feature	44620
Ganged Inverted Modular Jack (4 Port Combination Jack)	45235

#### 2.2 DIMENSIONS, MATERIALS, PLATINGS AND MARKINGS

See the appropriate sales drawings (SD-43860-001, SD-44380-001, SD-43814-001, SD-44248-001, SD-44580-001, SD-45235-001) for information on dimensions, materials, plating and markings.

#### 2.3 SAFETY AGENCY APPROVALS

UL File Number.....E107635  
CSA File Number.....LR19980

### 3.0 APPLICABLE DOCUMENTS AND SPECIFICATIONS

FCC Rules and Regulations, Part 68, Subpart F  
REA Bulletin 345-81, PE-76; Specification for modular telephone set hardware  
ANSI/EIA/TIA-568  
IEC-60603-7  
UL 1863  
MIL-STD-202; General requirements for test specifications

### 4.0 RATINGS

#### 4.1 VOLTAGE

56.5 V DC  
150 V<sub>RMS</sub> AC (Ringing voltage only)

#### 4.2 CURRENT

1.5 Amps @ 25°C

#### 4.3 TEMPERATURE

Operating: - 40°C to + 70°C

REVISION: <b>G</b>	ECR/ECN INFORMATION: EC No: <b>UCP2004-0028</b> DATE: <b>2003/07/02</b>	TITLE: <b>PRODUCT SPECIFICATION INVERTED RIGHT ANGLE MODULAR JACKS</b>	SHEET No. <b>1 of 5</b>
DOCUMENT NUMBER: <b>PS-43860-003</b>	CREATED / REVISED BY: <b>MAYO 98/05/22</b>	CHECKED BY: <b>ROBERTS 98/05/22</b>	APPROVED BY: <b>ROBERTS 98/05/22</b>



# PRODUCT SPECIFICATION

## 5.0 PERFORMANCE

### 5.1 ELECTRICAL REQUIREMENTS

	DESCRIPTION	TEST CONDITION	REQUIREMENT
	<b>Contact Resistance (Low Level)</b>	Mate connectors: apply a maximum voltage of <b>20 mV</b> and a current of <b>100 mA</b> . (Measurement locations in Section 7.0)	<b>20 milliohms</b> MAXIMUM [initial]
	<b>Insulation Resistance</b>	Unmated connector, mounted to a PCB: apply a voltage of <b>100 VDC</b> between adjacent terminals and between terminals to ground.	<b>500 Megohms</b> MINIMUM
	<b>Dielectric Withstanding Voltage</b>	Mate connectors: apply a voltage of <b>1000 VAC</b> for <b>1</b> minute between adjacent terminals and between terminals to ground.	No breakdown; current leakage < <b>5 mA</b>

REVISION: <b>G</b>	ECR/ECN INFORMATION: EC No: <b>UCP2004-0028</b> DATE: <b>2003/07/02</b>	TITLE: <b>PRODUCT SPECIFICATION INVERTED RIGHT ANGLE MODULAR JACKS</b>	SHEET No. <b>2 of 5</b>
DOCUMENT NUMBER: <b>PS-43860-003</b>	CREATED / REVISED BY: <b>MAYO 98/05/22</b>	CHECKED BY: <b>ROBERTS 98/05/22</b>	APPROVED BY: <b>ROBERTS 98/05/22</b>



# PRODUCT SPECIFICATION

## 5.2 MECHANICAL REQUIREMENTS

	DESCRIPTION	TEST CONDITION	REQUIREMENT
	<b>Connector Mate Force</b>	Mate connector at a rate of <b>25 ± 6 mm (1 ± ¼ inch)</b> per minute. (Gage dimensions in Section 7.0)	<b>22 N (5 lbf)</b> unshielded MAXIMUM insertion force <b>35 N (8 lbf)</b> shielded MAXIMUM insertion force
	<b>Durability</b>	Mate connectors up to <b>500</b> cycles at a maximum rate of <b>10</b> cycles per minute prior to Environmental Tests.	<b>10</b> milliohms MAXIMUM (change from initial)
	<b>Vibration (Random)</b>	Amplitude: 1.50mm (.060") peak to peak Sweep: 10-55-10 Hz in one minute Duration: 15 minutes ±X,±Y,±Z axis (45 minutes total)	<b>10</b> milliohms MAXIMUM (change from initial) & Discontinuity < <b>1</b> microsecond
	<b>Plug Retention Force</b>	Apply an axial pullout force on the plug at a rate of <b>25 ± 6 mm (1 ± ¼ inch)</b> .	<b>89 N (20 lbf)</b> MINIMUM retention force
	<b>PCB Separation Forces</b>	Apply a perpendicular static load on the plug at a rate of <b>25 ± 6 mm (1 ± ¼ inch)</b> .	<b>4.5 N (1 lbf)</b> MINIMUM withdrawal force before solder reflow <b>89 N (20 lbf)</b> MINIMUM withdrawal force after solder reflow
	<b>Shock (Mechanical)</b>	Mate connectors and shock at <b>50</b> g's with three saw tooth wave form shocks in the ±X,±Y,±Z axis (18 shocks total).	<b>10</b> milliohms MAXIMUM (change from initial) & Discontinuity < <b>1</b> microsecond

REVISION:	ECR/ECN INFORMATION:	TITLE:	SHEET No.
<b>G</b>	EC No: <b>UCP2004-0028</b> DATE: <b>2003/07/02</b>	<b>PRODUCT SPECIFICATION INVERTED RIGHT ANGLE MODULAR JACKS</b>	<b>3 of 5</b>
DOCUMENT NUMBER:	CREATED / REVISED BY:	CHECKED BY:	APPROVED BY:
<b>PS-43860-003</b>	<b>MAYO 98/05/22</b>	<b>ROBERTS 98/05/22</b>	<b>ROBERTS 98/05/22</b>



# PRODUCT SPECIFICATION

## 5.3 ENVIRONMENTAL REQUIREMENTS

	DESCRIPTION	TEST CONDITION	REQUIREMENT
	<b>Shock (Thermal)</b>	Mate connectors; expose to <b>10</b> cycles of: <b>-40°C to +85°C</b> <b>30</b> minutes dwell	<b>10</b> milliohms MAXIMUM (change from initial) & Visual: No Damage
	<b>Thermal Aging</b>	Mate connectors; expose to: <b>240</b> hours at <b>85±2°C</b>	<b>10</b> milliohms MAXIMUM (change from initial) & Visual: No Damage
	<b>Humidity (Cyclic)</b>	Mate connectors: expose to <b>10</b> cycles at <b>90-95%</b> relative humidity with temperatures at <b>+25°C</b> and <b>+65°C</b> per MIL-STD-202F method 106F (without -10°C dip)	<b>10</b> milliohms MAXIMUM (change from initial) & Dielectric Withstanding Voltage: No Breakdown at <b>500 VAC</b> & Insulation Resistance: <b>200</b> Megohms MINIMUM & Visual: No Damage
	<b>Solder Resistance</b>	Dip connector terminal tails in solder: Solder Duration: <b>5±0.5</b> seconds Solder Temperature: <b>260±5°C</b>  {Recommended same parameters as <b>SMES-152.</b> }	Visual: No Damage to insulator material

REVISION: <b>G</b>	ECR/ECN INFORMATION: EC No: <b>UCP2004-0028</b> DATE: <b>2003/07/02</b>	TITLE: <b>PRODUCT SPECIFICATION INVERTED RIGHT ANGLE MODULAR JACKS</b>	SHEET No. <b>4 of 5</b>
DOCUMENT NUMBER: <b>PS-43860-003</b>	CREATED / REVISED BY: <b>MAYO 98/05/22</b>	CHECKED BY: <b>ROBERTS 98/05/22</b>	APPROVED BY: <b>ROBERTS 98/05/22</b>

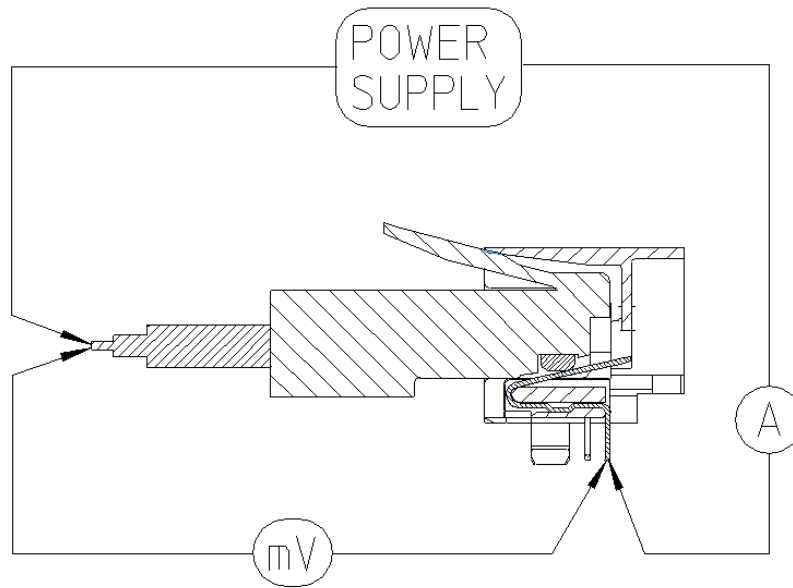


# PRODUCT SPECIFICATION

## 6.0 PACKAGING

Parts shall be packaged to protect against damage during handling, transit and storage. See appropriate sales drawings on Sheet 1 for packaging descriptions.

## 7.0 GAGES AND FIXTURES



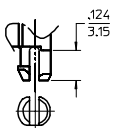
### TERMINATION RESISTANCE MEASUREMENT POINTS

Connector and plug terminals and wire conductor bulk resistance to be subtracted from measurements

## 8.0 OTHER INFORMATION

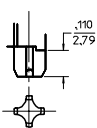
REVISION: <b>G</b>	ECR/ECN INFORMATION: EC No: <b>UCP2004-0028</b> DATE: <b>2003/07/02</b>	TITLE: <b>PRODUCT SPECIFICATION INVERTED RIGHT ANGLE MODULAR JACKS</b>	SHEET No. <b>5 of 5</b>
DOCUMENT NUMBER: <b>PS-43860-003</b>	CREATED / REVISED BY: <b>MAYO 98/05/22</b>	CHECKED BY: <b>ROBERTS 98/05/22</b>	APPROVED BY: <b>ROBERTS 98/05/22</b>

44248



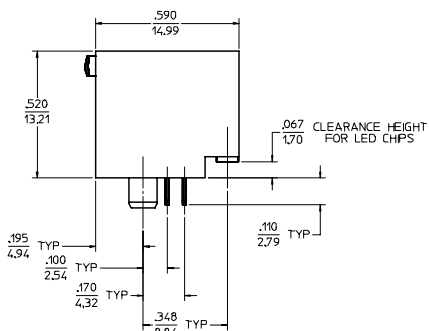
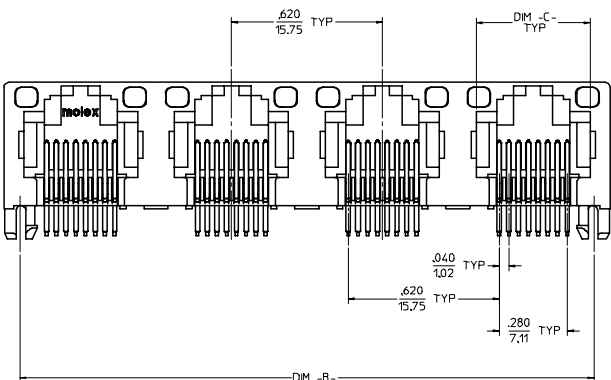
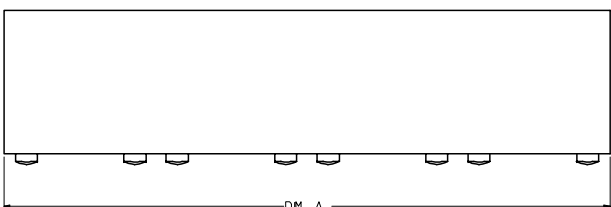
SNAP-FIT PEG OPTION

SCALE: NTS, SEE NOTE #7



PRESS-FIT PEG OPTION

SCALE: NTS, SEE NOTE #7



8 CIRCUIT HOUSING(S)

ASSEMBLY MATERIAL NUMBER	NUMBER OF CIRCUITS	NUMBER OF PORTS	PEG STYLE	DIM -A-	DIM -B-	DIM -C-
44248-0001	8	2	SNAP-FIT	1,250/31.75	1,120/28.45	.469/11.92
44248-0002	8	4	SNAP-FIT	2,490/63.25	2,360/59.94	.469/11.92
44248-0005	8	2	PRESS-FIT	1,250/31.75	1,120/28.45	.469/11.92
44248-0006	8	4	PRESS-FIT	2,490/63.25	2,360/59.94	.469/11.92

6 CIRCUIT HOUSING(S)

ASSEMBLY MATERIAL NUMBER	NUMBER OF CIRCUITS	NUMBER OF PORTS	PEG STYLE	DIM -A-	DIM -B-	DIM -C-
44248-0009	6	2	SNAP-FIT	1,250/31.75	1,120/28.45	.389/9.88
44248-0010	4	2	SNAP-FIT	1,250/31.75	1,120/28.45	.389/9.88
44248-0011	6	4	SNAP-FIT	2,490/63.25	2,360/59.94	.389/9.88
44248-0012	4	4	SNAP-FIT	2,490/63.25	2,360/59.94	.389/9.88
44248-0017	6	2	PRESS-FIT	1,250/31.75	1,120/28.45	.389/9.88
44248-0018	4	2	PRESS-FIT	1,250/31.75	1,120/28.45	.389/9.88
44248-0019	6	4	PRESS-FIT	2,490/63.25	2,360/59.94	.389/9.88
44248-0020	4	4	PRESS-FIT	2,490/63.25	2,360/59.94	.389/9.88

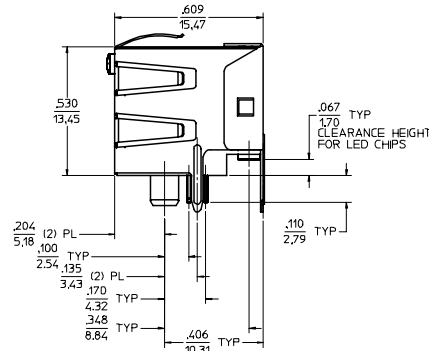
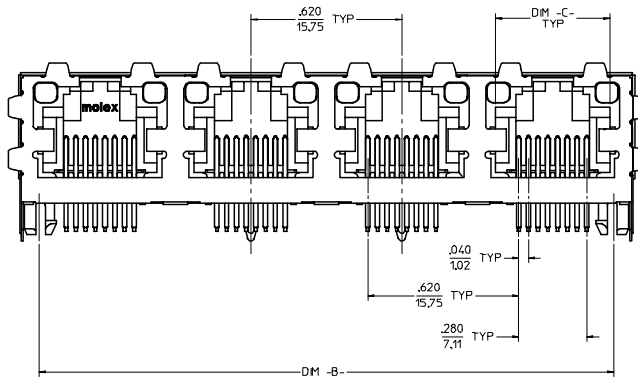
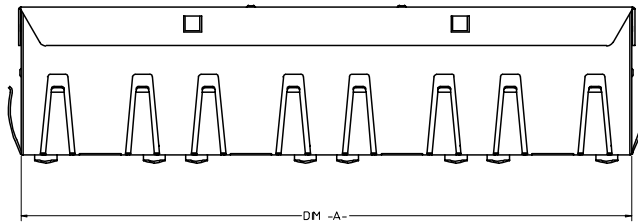
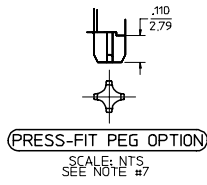
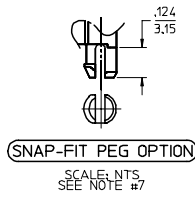
NOTES:

- MATERIAL: HOUSING: POLYESTER/PBT, GLASS FILLED, UL94V-0, COLOR: BLACK  
\*SELECT TIN IN PC TAIL AREA: 100 MICRONS (2.54 MICROMETERS) MIN.  
LIGHT PPES: POLYCARBONATE, UL-94V2, COLOR: CLEAR  
WITH OVERALL NICKEL UNDERPLATE: 50 MICRONS (1.27 MICROMETERS) MIN.  
TERMINALS: PHOSPHOR BRONZE .015/0.38 THICK
- FINISH: SELECT GOLD IN CONTACT AREA: 50 MICRONS (1.27 MICROMETERS) MIN.  
TERMINALS: \*THE PRIMARY SHIPPING CARTON WILL BE LABELED 'COMPLIANT TO RoHS DIRECTIVE 2002/95/EC AND ELV ANNEX II OF DIRECTIVE 2000/53/EC'.  
CARTONS WITHOUT THIS LABEL MAY CONTAIN PRODUCT WITH TIN-LEAD IN THE PC TAILS.
- PRODUCT SPECIFICATION AND PROCESSING PARAMETERS: PS-43860-003.
- PACKAGING SPECIFICATION: CONNECTOR ASSEMBLIES IN THERMOFORMED TRAYS PER MOLEX PACKAGING SPECIFICATION PK-44248-004.
- ALL UNTOLERANCED DIMENSIONS ARE SHOWN FOR REFERENCE ONLY.
- CONFORMS TO FCC REGULATION PART 68.5 FOR MODULAR JACKS.
- MODJACKS AVAILABLE WITH EITHER SNAP-FIT OR PRESS-FIT PEGS. THIS DRAWING SHOWS SNAP-FIT PEGS.
- PCB LAYOUT AND PANEL CUT-OUT SHOWN ON SHEETS (5) AND (6).

UNSHIELDED WITH LIGHT PIPES

REMOVED 688 PORT EC NO: UCP 2006-2481 DRAWN: PRIDDER 2006/06/12 CHKD: LSCHMDT 2006/06/22 APPR: FSMTH 2006/06/22 REV DESCRIPTION	QUALITY SYMBOLS	GENERAL TOLERANCES (UNLESS SPECIFIED)	SCALE 4:1	DESIGN UNITS INCH	THIRD ANGLE PROJECTION	REVISE ON CAD ONLY
	4 PLACES ±--- ±--- 3 PLACES ±--- ±--- 2 PLACES ±--- ±--- 1 PLACE ±--- ±---	DIMENSION STYLE IN/MM DRAWN BY MMAYO DATE 98/10/06 CHECKED BY JROBERTS DATE 98/10/06 APPROVED BY JROBERTS DATE 98/10/06	DRAFT WHERE APPLICABLE MUST REMAIN WITHIN DIMENSIONS	TITLE GANGED INVERTED MODJACK ASSEMBLY MOLEX MOLEX INCORPORATED SEE CHART SD-44248-001	SHEET NO. 1 OF 6 DOCUMENT NO. SD-44248-001	
	THIS DRAWING CONTAINS INFORMATION THAT IS PROPRIETARY TO MOLEX INCORPORATED AND SHOULD NOT BE USED WITHOUT WRITTEN PERMISSION					
	D					





**(8) CIRCUIT HOUSING(S)**

ASSEMBLY MATERIAL NUMBER	NUMBER OF CIRCUITS	NUMBER OF PORTS	PEG STYLE	DIM -A-	DIM -B-	DIM -C-
44248-0029	8	2	SNAP-FIT	1.274/32.36	1.120/28.45	.469/11.92
44248-0030	8	4	SNAP-FIT	2.514/63.86	2.360/59.94	.469/11.92
44248-0033	8	2	PRESS-FIT	1.274/32.36	1.120/28.45	.469/11.92
44248-0034	8	4	PRESS-FIT	2.514/63.86	2.360/59.94	.469/11.92

**(6) CIRCUIT HOUSING(S)**

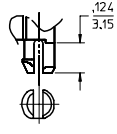
ASSEMBLY MATERIAL NUMBER	NUMBER OF CIRCUITS	NUMBER OF PORTS	PEG STYLE	DIM -A-	DIM -B-	DIM -C-
44248-0037	6	2	SNAP-FIT	1.274/32.36	1.120/28.45	.389/9.88
44248-0038	4	2	SNAP-FIT	1.274/32.36	1.120/28.45	.389/9.88
44248-0039	6	4	SNAP-FIT	2.514/63.86	2.360/59.94	.389/9.88
44248-0040	4	4	SNAP-FIT	2.514/63.86	2.360/59.94	.389/9.88
44248-0045	6	2	PRESS-FIT	1.274/32.36	1.120/28.45	.389/9.88
44248-0046	4	2	PRESS-FIT	1.274/32.36	1.120/28.45	.389/9.88
44248-0047	6	4	PRESS-FIT	2.514/63.86	2.360/59.94	.389/9.88
44248-0048	4	4	PRESS-FIT	2.514/63.86	2.360/59.94	.389/9.88

- NOTES:**
- MATERIAL:**  
HOUSING: POLYESTER(PBT), GLASS FILLED, UL94V-0, COLOR: BLACK  
LIGHT PIPES: POLYCARBONATE, UL-94V2, COLOR: CLEAR  
TERMINALS: PHOSPHOR BRONZE, .015/0.38 THICK  
SHIELD: BRASS
  - FINISH:**  
TERMINALS:  
\*SELECT GOLD IN CONTACT AREA: 50 MICRONS (1.27 MICROMETERS) MIN.  
\*SELECT TIN IN PC TAIL AREA: 100 MICRONS (2.54 MICROMETERS) MIN.  
WITH OVERALL NICKEL UNDERPLATE: 50 MICRONS (1.27 MICROMETERS) MIN.  
SHIELD:  
\*100 MICRONS (2.54 MICROMETERS) NICKEL OVER 50 MICRONS (1.27 MICROMETERS) COPPER UNDERPLATE PCB GROUND TABS DIPPED IN TIN  
\*THE PRIMARY SHIPPING CARTON WILL BE LABELED "COMPLIANT TO RoHS DIRECTIVE 2002/95/EC AND ELV ANNEX II OF DIRECTIVE 2000/53/EC". CARTONS WITHOUT THIS LABEL MAY CONTAIN PRODUCT WITH TIN-LEAD IN THE PC TAILS AND/OR SHIELD.
  - PRODUCT SPECIFICATION AND PROCESSING PARAMETERS:** PS-43860-003.
  - PACKAGING SPECIFICATION:**  
CONNECTOR ASSEMBLES IN THERMOFORMED TRAYS PER MOLEX PACKAGING SPECIFICATION PK-44248-004.
  - ALL UNTOLERANCED DIMENSIONS ARE SHOWN FOR REFERENCE ONLY.
  - CONFORMS TO FCC REGULATION PART 68.5 FOR MODULAR JACKS.
  - MODJACKS AVAILABLE WITH EITHER SNAP-FIT OR PRESS-FIT PEGS.
  - THIS DRAWING SHOWS SNAP-FIT PEGS.
  - PCB LAYOUT AND PANEL CUT-OUT SHOWN ON SHEETS (5) AND (6).

SHIELDED WITH LIGHT PIPES

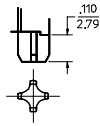
REMOVE 688 PORT EC NO: UCP 2006-2481 DRAWN: PRIDDER 2006/06/12 CHKD: L.SCHMIDT 2006/06/22 APPR: FSMTH 2006/06/22	QUALITY SYMBOLS	GENERAL TOLERANCES (UNLESS SPECIFIED)	SCALE 4:1	DESIGN UNITS INCH	THIRD ANGLE PROJECTION	REVISE ON CAD ONLY
	0.0 0.0	4 PLACES ±--- ±--- 3 PLACES ±--- ±--- 2 PLACES ±--- ±--- 1 PLACE ±--- ±---	DIMENSION STYLE IN/MM DRAWN BY DATE MMAYO 98/10/06	TITLE GANGED INVERTED MODJACK ASSEMBLY		
		ANGULAR ±1/2° DRAFT WHERE APPLICABLE MUST REMAIN WITHIN DIMENSIONS	CHECKED BY DATE JROBERTS 98/10/06	MOLEX INCORPORATED		
		APPROVED BY DATE JROBERTS 98/10/06	MATERIAL NO. DOCUMENT NO. SHEET NO. SEE CHART SD-44248-001 2 OF 6	THIS DRAWING CONTAINS INFORMATION THAT IS PROPRIETARY TO MOLEX INCORPORATED AND SHOULD NOT BE USED WITHOUT WRITTEN PERMISSION		

44248



(SNAP-FIT PEG OPTION)

SCALE: NTS  
SEE NOTE #7

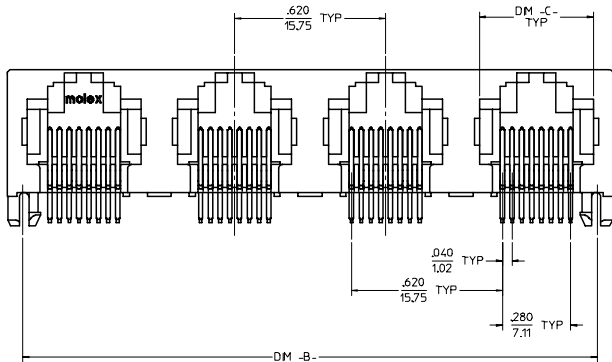


(PRESS-FIT PEG OPTION)

SCALE: NTS  
SEE NOTE #7

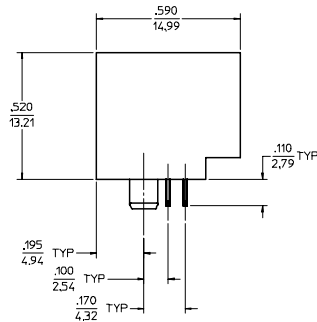


DM -A-



DM -B-

(UNSHIELDED)



8 CIRCUIT HOUSING(S)

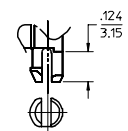
ASSEMBLY MATERIAL NUMBER	NUMBER OF CIRCUITS	NUMBER OF PORTS	PEG STYLE	DIM -A-	DIM -B-	DIM -C-
44248-0057	8	2	SNAP-FIT	1.250/31.75	1.120/28.45	.469/11.92
44248-0058	8	4	SNAP-FIT	2.490/63.25	2.360/59.94	.469/11.92
44248-0061	8	2	PRESS-FIT	1.250/31.75	1.120/28.45	.469/11.92
44248-0062	8	4	PRESS-FIT	2.490/63.25	2.360/59.94	.469/11.92

6 CIRCUIT HOUSING(S)

ASSEMBLY MATERIAL NUMBER	NUMBER OF CIRCUITS	NUMBER OF PORTS	PEG STYLE	DIM -A-	DIM -B-	DIM -C-
44248-0065	6	2	SNAP-FIT	1.250/31.75	1.120/28.45	.389/9.88
44248-0066	4	2	SNAP-FIT	1.250/31.75	1.120/28.45	.389/9.88
44248-0067	6	4	SNAP-FIT	2.490/63.25	2.360/59.94	.389/9.88
44248-0068	4	4	SNAP-FIT	2.490/63.25	2.360/59.94	.389/9.88
44248-0073	6	2	PRESS-FIT	1.250/31.75	1.120/28.45	.389/9.88
44248-0074	4	2	PRESS-FIT	1.250/31.75	1.120/28.45	.389/9.88
44248-0075	6	4	PRESS-FIT	2.490/63.25	2.360/59.94	.389/9.88
44248-0076	4	4	PRESS-FIT	2.490/63.25	2.360/59.94	.389/9.88

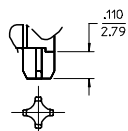
- NOTES:  
 1) MATERIAL: HOUSING: POLYESTER(PBT), GLASS FILLED, UL94V-0, COLOR: BLACK  
 TERMINALS: PHOSPHOR BRONZE .015/0.38 THCK  
 2) FINISH: TERMINALS:  
 \*SELECT GOLD IN CONTACT AREA; 50 MICRONS (1.27 MICROMETERS) MIN.  
 \*SELECT TIN IN PC TAIL AREA; 100 MICRONS (2.54 MICROMETERS) MIN.  
 WITH OVERALL NICKEL UNDERPLATE; 50 MICRONS (1.27 MICROMETERS) MIN.  
 \*THE PRIMARY SHIPPING CARTON WILL BE LABELED COMPLIANT TO ROHS DIRECTIVE 2002/95/EC AND ELV ANNEX II OF DIRECTIVE 2000/53/EC.  
 CARTONS WITHOUT THIS LABEL MAY CONTAIN PRODUCT WITH TIN-LEAD IN THE PC TAILS  
 3) PRODUCT SPECIFICATION AND PROCESSING PARAMETERS: PS-43860-003.  
 4) PACKAGING SPECIFICATION: CONNECTOR ASSEMBLIES IN THERMOFORMED TRAYS PER MOLEX PACKAGING SPECIFICATION PK-44248-004.  
 5) ALL UNTOLERANCED DIMENSIONS ARE SHOWN FOR REFERENCE ONLY.  
 6) CONFORMS TO FCC REGULATION PART 68.5 FOR MODULAR JACKS.  
 7) MODJACKS AVAILABLE WITH EITHER SNAP-FIT OR PRESS-FIT PEGS.  
 THIS DRAWING SHOWS SNAP-FIT PEGS.  
 8) PCB LAYOUT AND PANEL CUT-OUT SHOWN ON SHEETS (5) AND (6).

REMOVE 688 PORT EC NO: UCP2006-2481 DRAWN: PRIDDER, 2006/06/12 CHKD: LSCHMIDT, 2006/06/22 APPR: FSMITH, 2006/06/22 REV DESCRIPTION	QUALITY SYMBOLS	GENERAL TOLERANCES (UNLESS SPECIFIED)	SCALE 4:1	DESIGN UNITS INCH	THIRD ANGLE PROJECTION	REVISE ON CAD ONLY
	0.0 0.0	4 PLACES ± --- ± ---	DIMENSION STYLE IN/MM DRAWN BY DATE MMAYO 98/10/06 CHECKED BY DATE JROBERTS 98/10/06 APPROVED BY DATE JROBERTS 98/10/06	TITLE GANGED INVERTED MODJACK ASSEMBLY		
		3 PLACES ± --- ± ---				
	2 PLACES ± --- ± ---	MOLEX INCORPORATED MATERIAL NO. SEE CHART DOCUMENT NO. SD-44248-001 SHEET NO. 3 OF 6				
1 PLACE ± --- ± ---						
DRAFT WHERE APPLICABLE MUST REMAIN WITHIN DIMENSIONS		THIS DRAWING CONTAINS INFORMATION THAT IS PROPRIETARY TO MOLEX INCORPORATED AND SHOULD NOT BE USED WITHOUT WRITTEN PERMISSION				



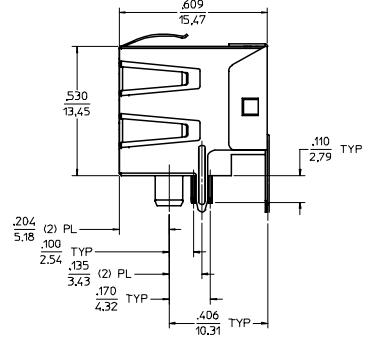
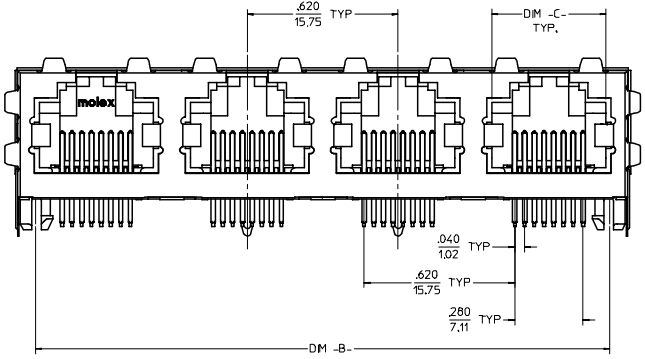
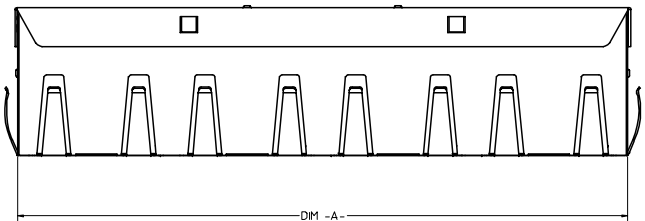
SNAP-FIT PEG OPTION

SCALE: NTS.  
SEE NOTE #7



PRESS-FIT PEG OPTION

SCALE: NTS.  
SEE NOTE #7



(8) CIRCUIT HOUSING(S)

ASSEMBLY MATERIAL NUMBER	NUMBER OF CIRCUITS	NUMBER OF PORTS	PEG STYLE	DIM -A-	DIM -B-	DIM -C-
44248-0085	8	2	SNAP-FIT	1.274/32.36	1.120/28.45	.469/11.92
44248-0086	8	4	SNAP-FIT	2.514/63.86	2.360/59.94	.469/11.92
44248-0089	8	2	PRESS-FIT	1.274/32.36	1.120/28.45	.469/11.92
44248-0090	8	4	PRESS-FIT	2.514/63.86	2.360/59.94	.469/11.92

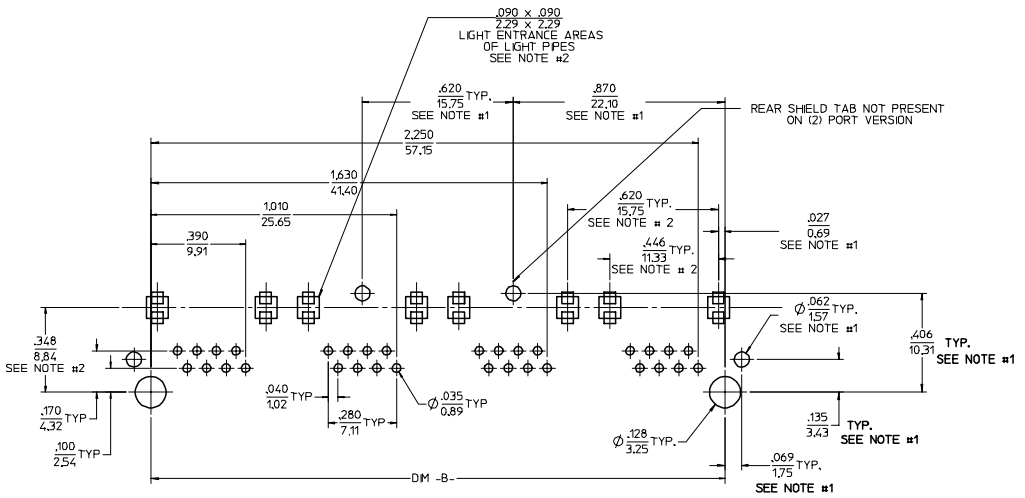
(6) CIRCUIT HOUSING(S)

ASSEMBLY MATERIAL NUMBER	NUMBER OF CIRCUITS	NUMBER OF PORTS	PEG STYLE	DIM -A-	DIM -B-	DIM -C-
44248-0093	6	2	SNAP-FIT	1.274/32.36	1.120/28.45	.389/9.88
44248-0094	4	2	SNAP-FIT	1.274/32.36	1.120/28.45	.389/9.88
44248-0095	6	4	SNAP-FIT	2.514/63.86	2.360/59.94	.389/9.88
44248-0096	4	4	SNAP-FIT	2.514/63.86	2.360/59.94	.389/9.88
44248-0101	6	2	PRESS-FIT	1.274/32.36	1.120/28.45	.389/9.88
44248-0102	4	2	PRESS-FIT	1.274/32.36	1.120/28.45	.389/9.88
44248-0103	6	4	PRESS-FIT	2.514/63.86	2.360/59.94	.389/9.88
44248-0104	4	4	PRESS-FIT	2.514/63.86	2.360/59.94	.389/9.88

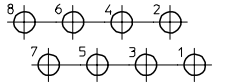
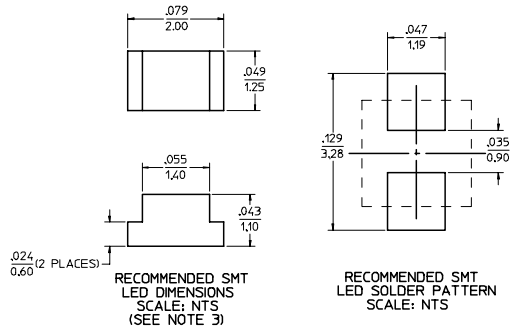
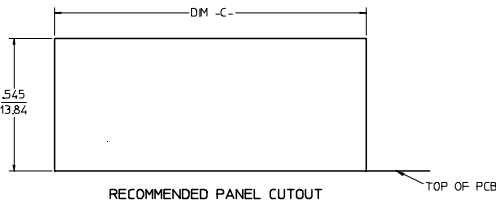
- NOTES:
- MATERIAL: HOUSING: POLYESTER(PBT), GLASS FILLED, UL94V-0, COLOR: BLACK  
TERMINALS: PHOSPHOR BRONZE, .015/0.38 THICK  
SHIELD: BRASS
  - FINISH: TERMINALS: SELECT GOLD IN CONTACT AREA; 50 MICRONS (1.27 MICROMETERS) MIN.  
\*SELECT TIN IN PC TAIL AREA; 100 MICRONS (2.54 MICROMETERS) MIN., WITH OVERALL NICKEL UNDERPLATE; 50 MICRONS (1.27 MICROMETERS) MIN.  
SHIELD: \*100 MICRONS (2.54 MICROMETERS) NICKEL OVER 50 MICRONS (1.27 MICROMETERS) COPPER UNDERPLATE PCB GROUND TABS DIPPED IN TIN  
\*THE PRIMARY SHIPPING CARTON WILL BE LABELED "COMPLIANT TO RoHS DIRECTIVE 2002/95/EC AND ELV ANNEX II OF DIRECTIVE 2000/53/EC" CARTONS WITHOUT THIS LABEL MAY CONTAIN PRODUCT WITH TIN-LEAD IN THE PC TAILS AND/OR SHIELD.
  - PRODUCT SPECIFICATION AND PROCESSING PARAMETERS: PS-43860-003.
  - PACKAGING SPECIFICATION: CONNECTOR ASSEMBLIES SPECIFICATION PX-44248-004.
  - ALL UNTOLERANCED DIMENSIONS ARE SHOWN FOR REFERENCE ONLY.
  - CONFORMS TO FCC REGULATION PART 68.5 FOR MODULAR JACKS.
  - MODJACKS AVAILABLE WITH EITHER SNAP-FIT OR PRESS-FIT PEGS. THIS DRAWING SHOWS SNAP-FIT PEGS.
  - PCB LAYOUT AND PANEL CUT-OUT SHOWN ON SHEETS (5) AND (6).

SHIELDED

REMOVE 688 PORT EC NO: UCP 2006-2481 DRW: PRD: 2006/06/12 CHK: LSC: MDT: 2006/06/22 APPR: FSMTH: 2006/06/22 REV: DESCRIPTION	QUALITY SYMBOLS	GENERAL TOLERANCES (UNLESS SPECIFIED)	SCALE 4:1	DESIGN UNITS INCH	THIRD ANGLE PROJECTION	REVISE ON CAD ONLY
	0.0 0.0	4 PLACES	mm INCH	DIMENSION STYLE IN/MM		TITLE <b>GANGED INVERTED MODJACK ASSEMBLY</b>  MOLEX INCORPORATED MATERIAL NO. SEE CHART DOCUMENT NO. SD-44248-001 SHEET NO. 4 OF 6
		3 PLACES	± --- ± ---	DRAWN BY MMAYO	DATE 98/10/06	
		2 PLACES	± --- ± ---	CHECKED BY JROBERTS	DATE 98/10/06	
1 PLACE	± --- ± ---	APPROVED BY JROBERTS	DATE 98/10/06			
DRAFT WHERE APPLICABLE MUST REMAIN WITHIN DIMENSIONS		THIS DRAWING CONTAINS INFORMATION THAT IS PROPRIETARY TO MOLEX INCORPORATED AND SHOULD NOT BE USED WITHOUT WRITTEN PERMISSION				



8 CIRCUIT PCB LAYOUT: COMPONENT SIDE  
 RECOMMENDED PCB THICKNESS: .062/1.57  
 TOLERANCE ±.003/.076 UNLESS OTHERWISE SPECIFIED



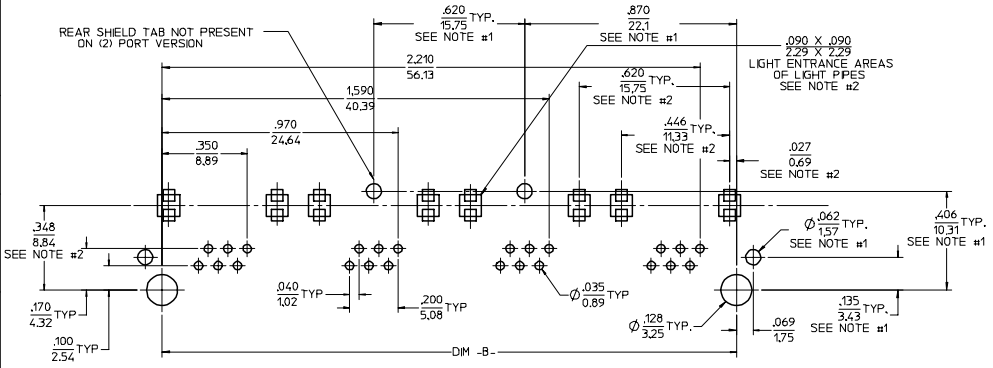
TYPICAL PC TERMINAL HOLE LAYOUT  
 (8) CIRCUIT CONFIGURATION  
 SCALE: 10:1

- NOTES:
- 1) DIMENSIONS MARKED "SEE NOTE #1" REFER TO ASSEMBLIES WITH THE SHIELDING OPTION INCLUDED
  - 2) DIMENSIONS MARKED "SEE NOTE #2" REFER TO ASSEMBLIES WITH THE LIGHT PYPE OPTION INCLUDED
  - 3) FOR CROSS REFERENCE OF RECOMMENDED LEDS SEE MOLEX WEB SITE.

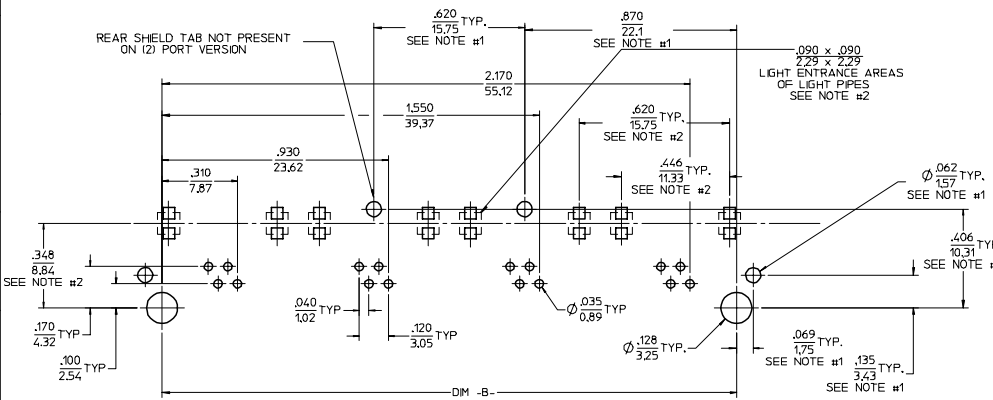
NUMBER OF PORTS	DIM -B-	DIM -C-
2	1.120/28.45	1.280/32.51
4	2.360/59.94	2.520/64.01

REMOVE 6&8 PORT EC NO: UCP 2006-2481 DRAWN: PRIDDER 2006/06/12 CHKD: LSCHMDT 2006/06/22 APPR: FSMITH 2006/06/22 REV DESCRIPTION	QUALITY SYMBOLS	GENERAL TOLERANCES (UNLESS SPECIFIED)	SCALE 4:1	DESIGN UNITS INCH	THIRD ANGLE PROJECTION	REVISE ON CAD ONLY	
	4 PLACES	± .010	± .010	DIMENSION STYLE IN/MM	TITLE GANGED INVERTED MODJACK ASSEMBLY		
	3 PLACES	± .010	± .010	DRAWN BY MMAYO	DATE 98/10/06	MOLEX INCORPORATED	
	2 PLACES	± .010	± .010	CHECKED BY JROBERTS	DATE 98/10/06	MATERIAL NO. N/A	DOCUMENT NO. SD-44248-001
1 PLACE	± .010	± .010	APPROVED BY JROBERTS	DATE 98/10/06	SHEET NO. 5 OF 6	THIS DRAWING CONTAINS INFORMATION THAT IS PROPRIETARY TO MOLEX INCORPORATED AND SHOULD NOT BE USED WITHOUT WRITTEN PERMISSION	

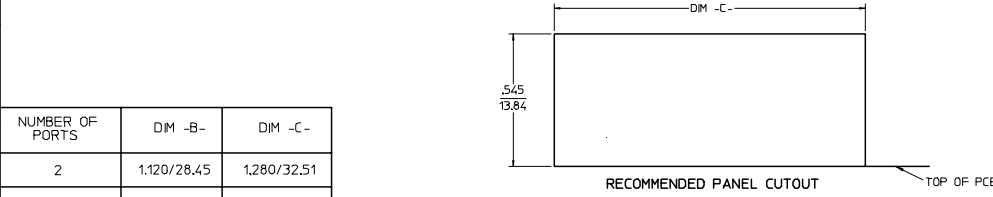
44248



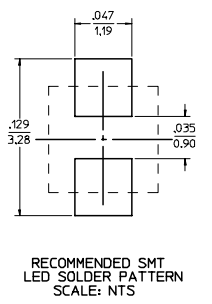
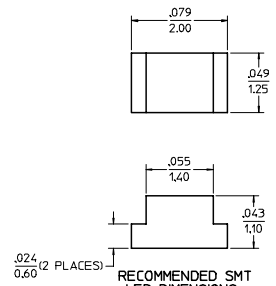
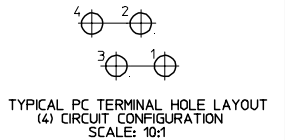
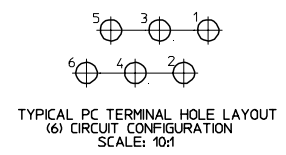
6 CIRCUIT PCB LAYOUT: COMPONENT SIDE  
RECOMMENDED PCB THICKNESS: .062/157  
TOLERANCE ±.003/076 UNLESS OTHERWISE SPECIFIED



4 CIRCUIT PCB LAYOUT: COMPONENT SIDE  
RECOMMENDED PCB THICKNESS: .062/157  
TOLERANCE ±.003/076 UNLESS OTHERWISE SPECIFIED



NUMBER OF PORTS	DIM -B-	DIM -C-
2	1.120/28.45	1.280/32.51
4	2.360/59.94	2.520/64.01



- NOTES:
- 1) DIMENSIONS MARKED "SEE NOTE #1" REFER TO ASSEMBLIES WITH SHIELDING OPTION INCLUDED
  - 2) DIMENSIONS MARKED "SEE NOTE #2" REFER TO ASSEMBLIES WITH THE LIGHT PIPE OPTION INCLUDED
  - 3) FOR CROSS REFERENCE OF RECOMMENDED LEADS SEE MOLEX WEB SITE.

REMOVE 688 PORT EC NO: UCP 2006-2481 DRWN:PRIDDER 2006/06/12 CHKD:LSCHMDT 2006/06/12 APPR:FSMTH 2006/06/12	QUALITY SYMBOLS	GENERAL TOLERANCES (UNLESS SPECIFIED)	SCALE 4:1	DESIGN UNITS INCH	THIRD ANGLE PROJECTION	REVISE ON CAD ONLY	
	4 PLACES ±--- ±--- 3 PLACES ±--- ±--- 2 PLACES ±--- ±--- 1 PLACE ±--- ±---	mm INCH	DIMENSION STYLE IN/MM	DRAWN BY MMAYO	DATE 98/10/06	TITLE GANGED INVERTED MODJACK ASSEMBLY	
	ANGULAR ±1/2° DRAFT WHERE APPLICABLE MUST REMAIN WITHIN DIMENSIONS	APPROVED BY JROBERTS	DATE 98/10/06	CHECKED BY JROBERTS	DATE 98/10/06	MATERIAL NO. N/A	
	THIS DRAWING CONTAINS INFORMATION THAT IS PROPRIETARY TO MOLEX INCORPORATED AND SHOULD NOT BE USED WITHOUT WRITTEN PERMISSION	APPROVED BY JROBERTS	DATE 98/10/06	CHECKED BY JROBERTS	DATE 98/10/06	DOCUMENT NO. SD-44248-001	SHEET NO. 6 OF 6