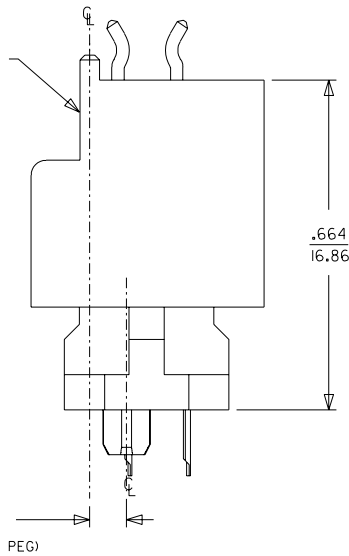


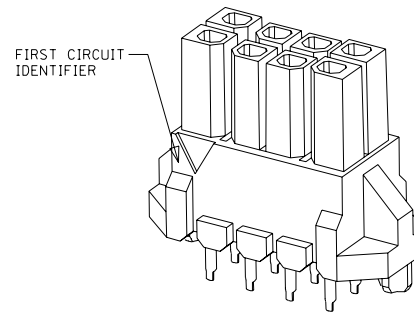
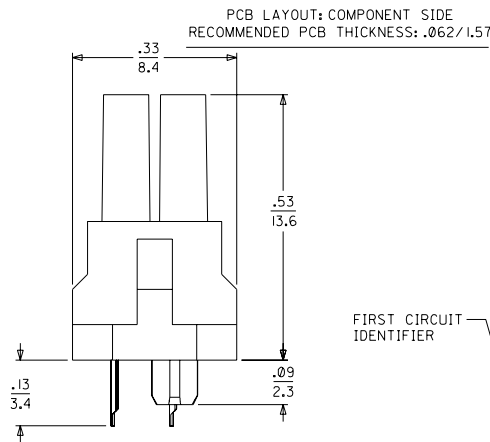
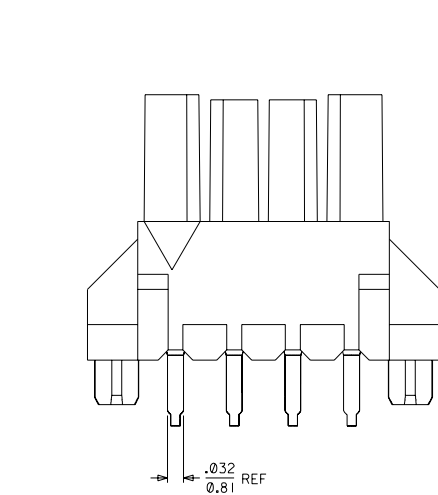
MICRO FIT DUAL ROW  
VERTICAL BMI HEADER  
44432 SERIES



MATED DIMENSIONS

(FOR ALIGNMENT OF PCB'S IN X & Y DIRECTIONS)

CIRCUIT SIZE	DIM. "A"	DIM. "B"	DIM. "C"
4	.472/(12.00)	.118/(3.00)	.354/(9.00)
6	.591/(15.00)	.236/(6.00)	.472/(12.00)
8	.709/(18.00)	.354/(9.00)	.591/(15.00)
10	.827/(21.00)	.472/(12.00)	.709/(18.00)
12	.945/(24.00)	.591/(15.00)	.827/(21.00)
14	1.063/(27.00)	.709/(18.00)	.945/(24.00)
16	1.181/(30.00)	.827/(21.00)	1.063/(27.00)
18	1.299/(33.00)	.945/(24.00)	1.181/(30.00)
20	1.417/(36.00)	1.063/(27.00)	1.299/(33.00)
22	1.535/(39.00)	1.181/(30.00)	1.417/(36.00)
24	1.654/(42.00)	1.299/(33.00)	1.535/(39.00)



- NOTES:  
 1. MATERIAL:  
 HOUSING: HIGH TEMP NYLON, GLASS FILLED, UL94V-0, COLOR - BLACK  
 TERMINALS: PHOSPHOR BRONZE ALLOY  
 2. FINISH:  
 (A) = 100 MICROINCHES MIN. TIN OVER  
 50 MICROINCHES MIN. NICKEL PLATE  
 (B) = 15 MICROINCHES MIN. SELECTIVE GOLD IN THE CONTACT AREA,  
 50 MICROINCHES MIN. SELECTIVE TIN-LEAD(90/10) IN THE PC TAIL AREA,  
 WITH 50 MICROINCHES MIN. NICKEL OVERALL.  
 (C) = 30 MICROINCHES MIN. SELECTIVE GOLD IN THE CONTACT AREA,  
 50 MICROINCHES MIN. SELECTIVE TIN-LEAD(90/10) IN THE PC TAIL AREA,  
 WITH 50 MICROINCHES MIN. NICKEL OVERALL.  
 3. PRODUCT SPECIFICATIONS: PS-44300-001  
 4. MATES WITH MOLEX MICRO FIT BMI HEADER SERIES 44432, 44428, AND 44300.  
 5. PACKAGING SPECIFICATION: PK-44769-001

MATERIAL NUMBER	NUMBER OF POSITIONS	PLATING OPTION
44769-0401	04	A
44769-0402	04	B
44769-0403	04	C
44769-0601	06	A
44769-0602	06	B
44769-0603	06	C
44769-0801	08	A
44769-0802	08	B
44769-0803	08	C
44769-1001	10	A
44769-1002	10	B
44769-1003	10	C
44769-1201	12	A
44769-1202	12	B
44769-1203	12	C
44769-1401	14	A
44769-1402	14	B
44769-1403	14	C
44769-1601	16	A
44769-1602	16	B
44769-1603	16	C
44769-1801	18	A
44769-1802	18	B
44769-1803	18	C
44769-2001	20	A
44769-2002	20	B
44769-2003	20	C
44769-2201	22	A
44769-2202	22	B
44769-2203	22	C
44769-2401	24	A
44769-2402	24	B
44769-2403	24	C

DIMENSIONS:		SHT	REV
<input type="checkbox"/> mm	<input checked="" type="checkbox"/> INCH		REVISE ON CAD ONLY
<input type="checkbox"/> mm	<input type="checkbox"/> mm		
TITLE: MICRO-FIT(3.0) BMI VERTICAL RECEPTACLE ASSY 4 THRU 24 CIRCUIT			
MOLEX INCORPORATED			
CAD FILENAME	MATERIAL NO.	DRAWING NO.	SHEET NO.
SD-44085*.S01	SEE CHART	SD-44769-001	1 OF 1
THIS DRAWING CONTAINS INFORMATION THAT IS PROPRIETARY TO MOLEX INCORPORATED AND SHOULD NOT BE USED WITHOUT WRITTEN PERMISSION.			SIZE B

REV. ALLOY MAT'L	QUALITY SYMBOLS
EC NO. UCP2003-1349	MAJOR
DRWN:SMUELLER 12/10/02	CRITICAL
CHK: MUELLER 12/10/02	C
APPR:MARCUIS 12/10/02	
DESCRIPTION	
D	REV

GENERAL TOLERANCES: (UNLESS SPECIFIED)	
mm	INCH
4 PLACES ±0.	±.
3 PLACES ±0.	±.010
2 PLACES ±0.25	±.014
1 PLACE ±0.35	±.
ANGULAR: ±1/2 °	
DRAFT WHERE APPLICABLE MUST REMAIN WITHIN DIMENSIONS	

SCALE 4:1	DESIGN UNITS
<input checked="" type="checkbox"/> mm	<input type="checkbox"/> INCH
THIRD ANGLE PROJECTION	
DRAWN BY & DATE	
BURLESON 00/07/13	
CHECKED BY & DATE	
SMUELLER 00/07/13	
APPROVED BY & DATE	
REDGLEY 00/07/13	
CAD FILENAME	
SD-44085*.S01	