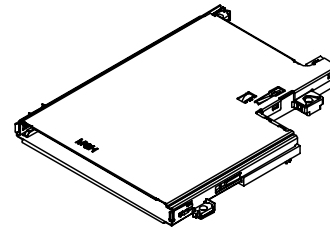
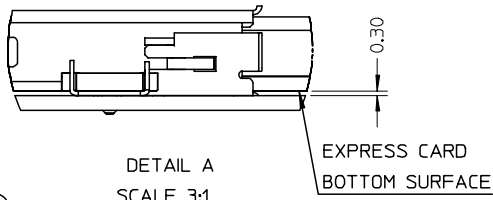
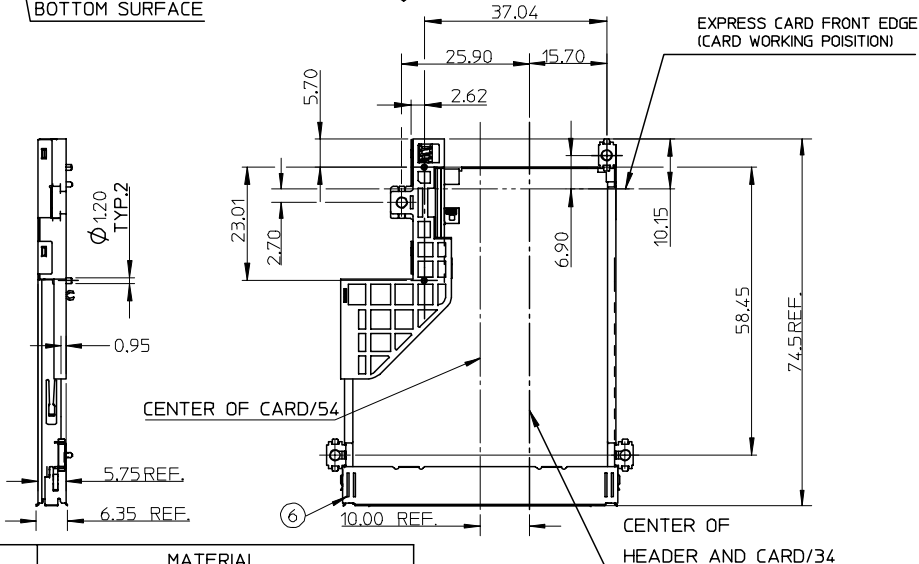
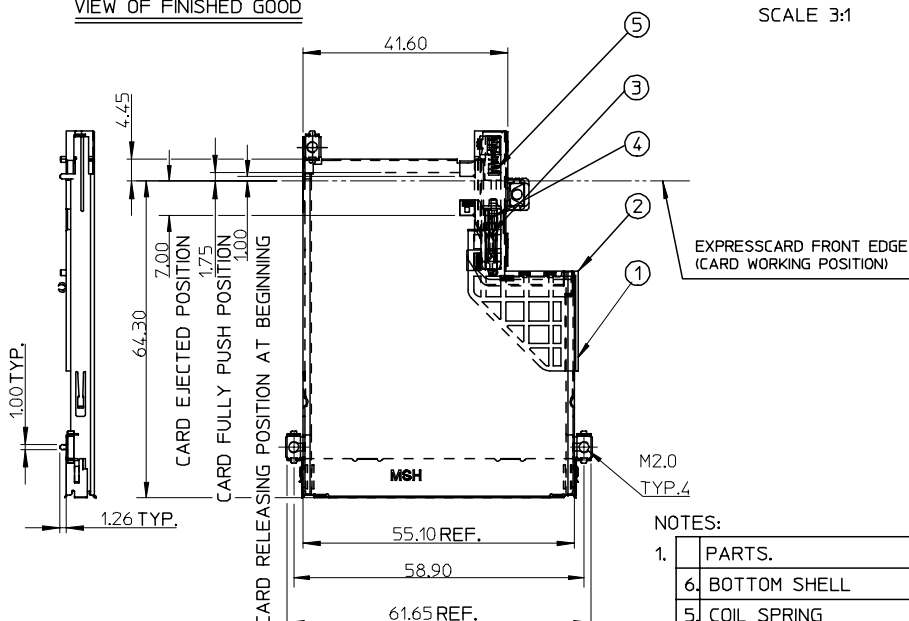


VIEW OF FINISHED GOOD



| P/N | DESCRIPTION |
|------------|------------------|
| 47150-0003 | W/O BOTTOM SHELL |
| 47150-0004 | W BOTTOM SHELL |

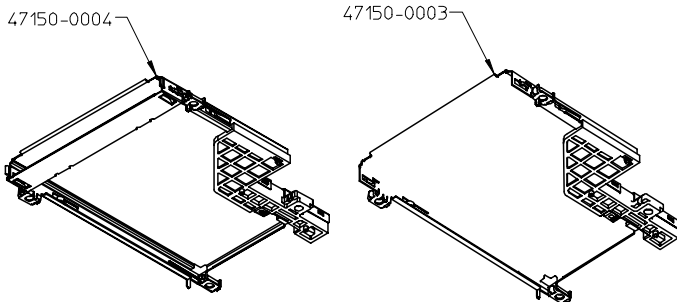


NOTES:

| 1. | PARTS. | MATERIAL |
|----|-----------------------|--------------------------------|
| 6. | BOTTOM SHELL | STAINLESS STEEL |
| 5. | COIL SPRING | PIANO WIRE |
| 4. | CAM PIN | STAINLESS STEEL |
| 3. | HEART CAM SLIDER | HIGH TEMPERATURE THERMOPLASTIC |
| 2. | HOUSING FOR HEART CAM | HIGH TEMPERATURE THERMOPLASTIC |
| 1. | METAL COVER | STAINLESS STEEL |

- 2. THE EJECTOR MECHANISM TO BE ASSEMBLED BASES ON 34 CARD CENTER LINE.
- 3. PRODUCT SPEC. REFERS TO PS-47202-001

- 4. APPLICABLE HEADER: 47150-0002
- 5. WHEN DELIVERING, THE HEART CAM SLIDER IS IN THE STATE OF THE SPRING RELEASED. (CARD EJECTED OUT POSITION).
- 6. SLOT DESIGN BASED ON EXPRESS CARD ASSOC. REV.A.
- 7. EXPRESSCARD SLOT TO BE COMPATIBLE BOTH EXPRESSCARD/34 AND /54.



| | | | | | | | | | |
|---|--|--|-----------------------|---------------------------------------|---|---|--------------------------------|--|--|
| <p>NEW RELEASE</p> <p>EC NO: SH2006-0040</p> <p>DRWN: LBAO 2005/07/25</p> <p>CHKD: 2005/07/26</p> <p>APPR: YTYAP 2005/07/26</p> | <p>QUALITY SYMBOLS</p> <p>▽=0</p> <p>∇=0</p> | <p>GENERAL TOLERANCES (UNLESS SPECIFIED)</p> | | <p>DIMENSION STYLE</p> <p>MM ONLY</p> | <p>SCALE</p> <p>1:1</p> | <p>DESIGN UNITS</p> <p>METRIC</p> | <p>THIRD ANGLE PROJECTION</p> | | |
| | | <p>4 PLACES ± --- ± ---</p> <p>3 PLACES ± --- ± ---</p> <p>2 PLACES ± 0.25 ± ---</p> <p>1 PLACE ± 0.25 ± ---</p> | <p>mm</p> <p>INCH</p> | <p>DRAWN BY</p> <p>R. BIAN</p> | <p>DATE</p> <p>2004/11/24</p> | <p>TITLE</p> <p>EXPRESSCARD SLOT WITH PUSH-PUSH MECHANISM TOP MOUNT</p> | | | |
| | | <p>ANGULAR ± 3 °</p> | | <p>APPROVED BY</p> | <p>DATE</p> | <p>MATERIAL NO.</p> <p>SEE TABLE</p> | | | |
| | | <p>DRAFT WHERE APPLICABLE MUST REMAIN WITHIN DIMENSIONS</p> | | <p>SIZE</p> <p>A3</p> | <p>DOCUMENT NO.</p> <p>SD-47150-001</p> | | <p>SHEET NO.</p> <p>1 OF 4</p> | | |

10 9 8 7 6 5 4 3 2 1

F

E

D

C

B

A

F

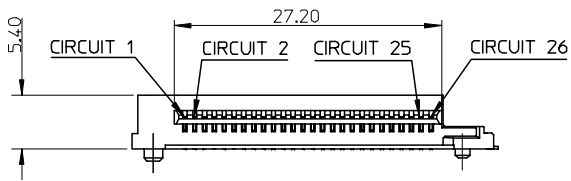
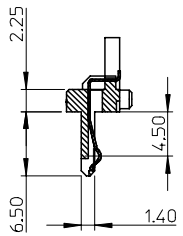
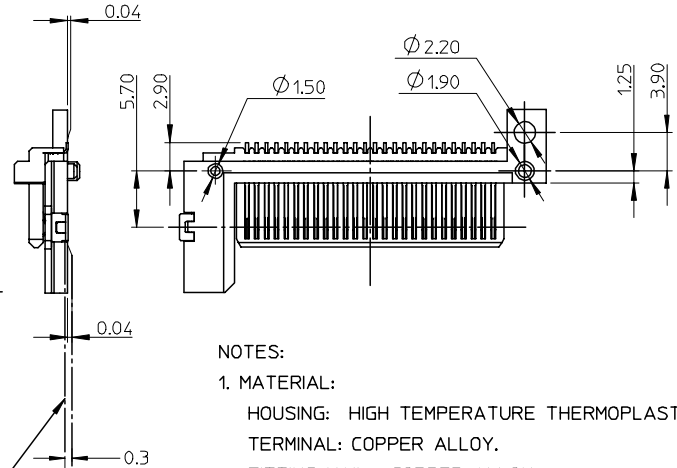
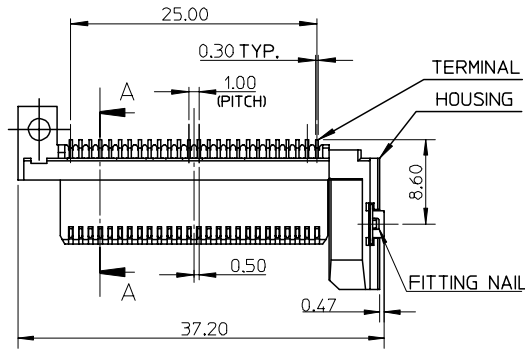
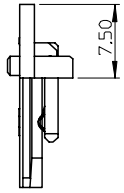
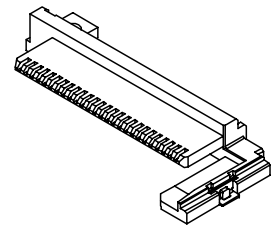
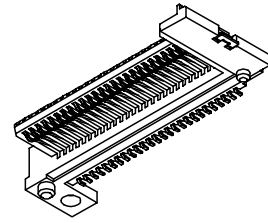
E

D

C

B

A



NOTES:

1. MATERIAL:
 - HOUSING: HIGH TEMPERATURE THERMOPLASTIC
 - TERMINAL: COPPER ALLOY.
 - FITTING NAIL : COPPER ALLOY.
2. FINISH:
 - TERMINAL: SELECTIVE GOLD(AU) IN CONTACT AREA.
 - THICKNESS: 0.3 MICROMETER MIN
 - SELECTIVE PURE TIN IN SOLDER TAIL AREA.
 - THICKNESS: 3 MICROMETER MIN
 - UNDERPLATING : NICKEL(NI) OVERALL
- 3.COPLANARITY AT SOLDER TAIL TO BE 0.1mm MAX.
- 4.PRODUCT SPEC. REFERS TO PS-47202-001
- 5.APPLICABLE EXPRESS CARD SLOT: 47150-0003/47150-0004

SECTION A-A

| | | | | | | | | | | | | |
|---|--|--|---------------------------------------|------------|----------------------------|------------------------------|--------------------|------------------------|--|--|--|--|
| NEW RELEASE EC NO: SH2006-0040 DRWN: LBAO CHKD: APPR: YTYAP | 2005/07/25 2005/07/26 2005/07/26 | QUALITY SYMBOLS ▽=0 ▽=0 | GENERAL TOLERANCES (UNLESS SPECIFIED) | | DIMENSION STYLE MM ONLY | | SCALE 2:1 | DESIGN UNITS METRIC | THIRD ANGLE PROJECTION | | | |
| | | | | | DRAWN BY R. BIAN | | DATE 2004/11/24 | | TITLE EXPRESSCARD SLOT WITH PUSH-PUSH MECHANISM TOP MOUNT | | | |
| | | | | | CHECKED BY | | DATE | | APPROVED BY | | | |
| | | | | | APPROVED BY | | DATE | | MATERIAL NO. 47150-0002 | | | |
| | | DRAFT WHERE APPLICABLE MUST REMAIN WITHIN DIMENSIONS | | SIZE A3 | | DOCUMENT NO. SD-47150-001 | | | SHEET NO. 2 OF 4 | | | |

9 8 7 6 5 4 3 2 1

10 9 8 7 6 5 4 3 2 1

F

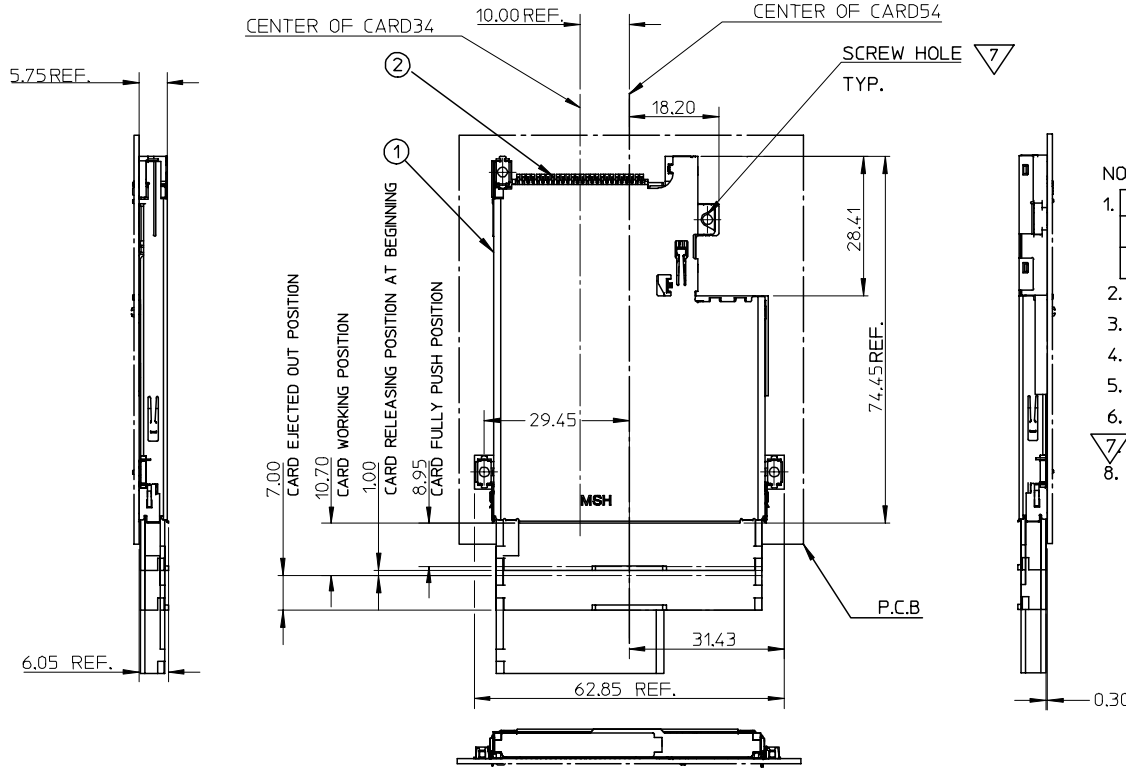
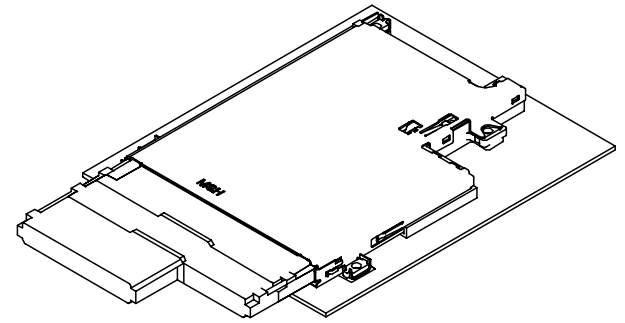
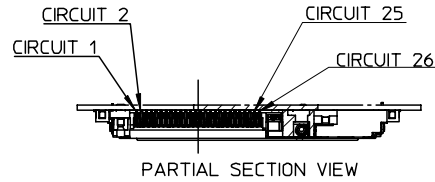
E

D

C

B

A



NOTES:

- | 1. NO. | DRAWING | MATERIAL NO. | DESCRIPTION |
|--------|-------------|-----------------------|-------------------|
| 1 | SEE SHEET 1 | 47150-0003/47150-0004 | EJECTOR MECHANISM |
| 2 | SEE SHEET 2 | 47150-0002 | CARD HEADER |
- P.C.B LAYOUT REFERS TO SHEET 4.
 - COPLANRTY OF HEADER FOR SMT SOLDER TAIL TO BE 0.1mm MAX
 - PRODUCT SPEC. REFERS TO PS-47202-001.
 - SCREW FASTENING TORQUE: 2kgf-cm.
 - TRUE POSITION IS 0.15mm MAX BETWEEN SOLDER TAILS.
 - 7 USING M2 SCREW AND NUT TO FIX
 - NON-REFLOW PROCESS FOR CARD SLOT

NEW RELEASE
 EC NO: SH2006-0040
 DRWN: LBAO 2005/07/25
 CHKD: 2005/07/26
 APPR: YIYAP 2005/07/26

QUALITY SYMBOLS
 ▽=0
 ◻=0

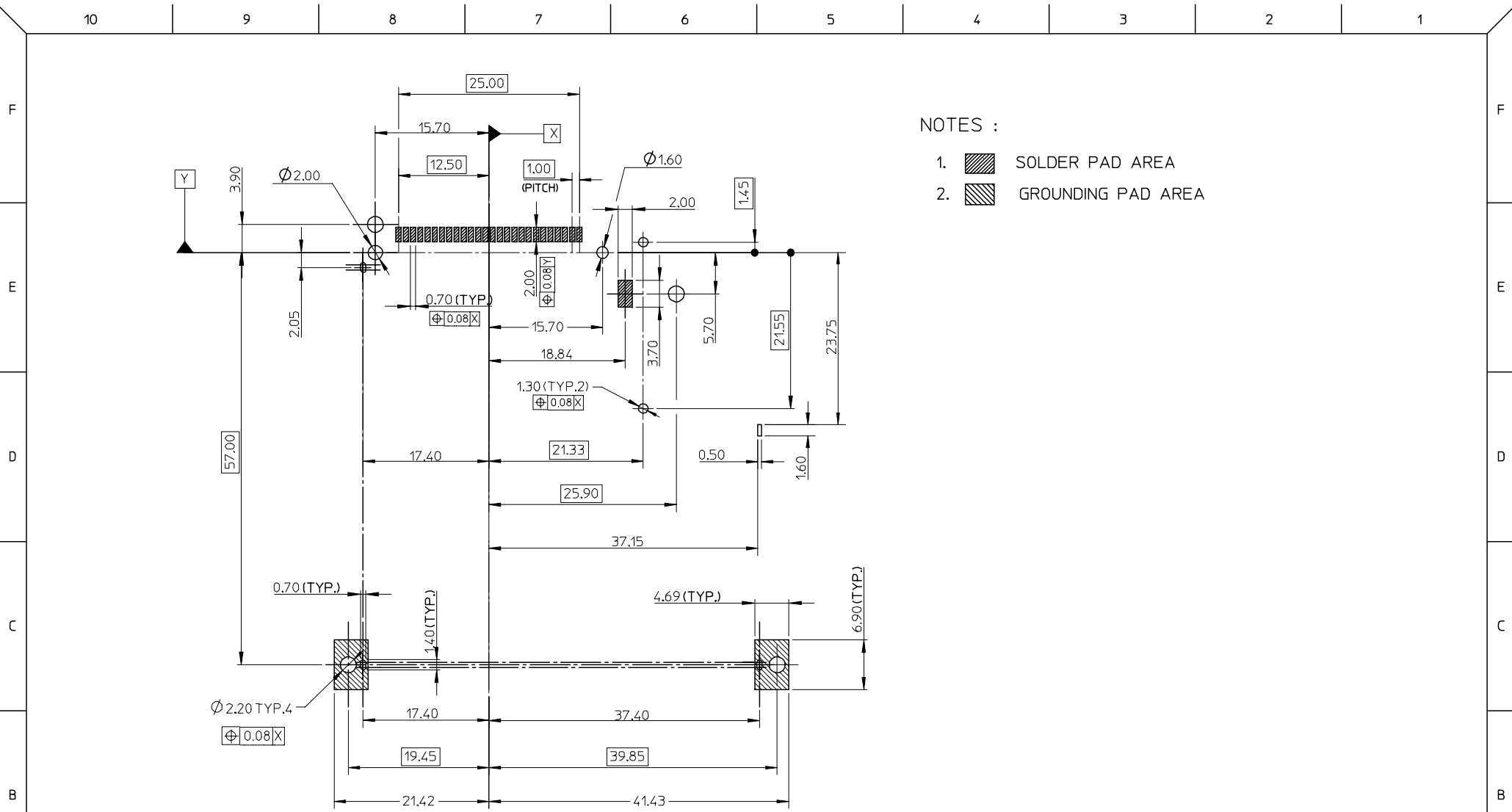
| GENERAL TOLERANCES (UNLESS SPECIFIED) | |
|---------------------------------------|-------|
| mm | INCH |
| 4 PLACES ± --- | ± --- |
| 3 PLACES ± --- | ± --- |
| 2 PLACES ± 0.25 | ± |
| 1 PLACE ± 0.25 | ± |
| ANGULAR ± 3 ° | |

DRAFT WHERE APPLICABLE
 MUST REMAIN WITHIN DIMENSIONS

| DIMENSION STYLE | |
|-----------------|------------|
| MM ONLY | |
| DRAWN BY | DATE |
| R. BIAN | 2004/11/24 |
| CHECKED BY | DATE |
| APPROVED BY | DATE |
| MATERIAL NO. | N/A |

| SCALE | DESIGN UNITS | THIRD ANGLE PROJECTION | |
|---|--------------|---|-----------|
| 2:1 | METRIC | EXPRESSCARD SLOT WITH PUSH-PUSH MECHANISM TOP MOUNT | |
| MOLEX INCORPORATED | | DOCUMENT NO. | SHEET NO. |
| | | SD-47150-001 | 3 OF 4 |
| THIS DRAWING CONTAINS INFORMATION THAT IS PROPRIETARY TO MOLEX INCORPORATED AND SHOULD NOT BE USED WITHOUT WRITTEN PERMISSION | | | |

9 8 7 6 5 4 3 2 1



NOTES :

1. SOLDER PAD AREA
2. GROUNDING PAD AREA

| | | | | | | | | | | |
|---|-----------------|--|---------------------------------------|------------------|-----------------|---------------------------|---|------------------------|---------------------------|--|
| <p style="text-align: center;">NEW RELEASE</p> <p>EC NO: SH2006-0040 DRWN: LBAO 2005/07/25 CHKD: 2005/07/26 APPR: YIYAP 2005/07/26</p> | QUALITY SYMBOLS | $\nabla = 0$ $\sphericalangle = 0$ | GENERAL TOLERANCES (UNLESS SPECIFIED) | | DIMENSION STYLE | SCALE | DESIGN UNITS | THIRD ANGLE PROJECTION | | |
| | | | | mm | INCH | MM ONLY | 1:1 | METRIC | | |
| | | | | 4 PLACES | ± --- | ± --- | DRAWN BY | DATE | | |
| | | | | 3 PLACES | ± --- | ± --- | R. BIAN | 2004/11/24 | MOLEX INCORPORATED | |
| | | 2 PLACES | ± 0.25 | ± | CHECKED BY | DATE | DOCUMENT NO. SD-47150-001 | | | |
| | | 1 PLACE | ± 0.25 | ± | APPROVED BY | DATE | | | SHEET NO. 4 OF 4 | |
| | | ANGULAR ± 3 ° | | MATERIAL NO. N/A | | DOCUMENT NO. SD-47150-001 | | SHEET NO. 4 OF 4 | | |
| | | DRAFT WHERE APPLICABLE MUST REMAIN WITHIN DIMENSIONS | | | SIZE A3 | | THIS DRAWING CONTAINS INFORMATION THAT IS PROPRIETARY TO MOLEX INCORPORATED AND SHOULD NOT BE USED WITHOUT WRITTEN PERMISSION | | | |

Mouser Electronics

Authorized Distributor

Click to View Pricing, Inventory, Delivery & Lifecycle Information:

[Molex:](#)

[47150-0004](#)