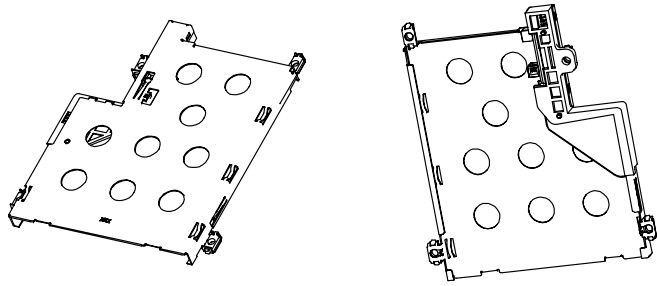
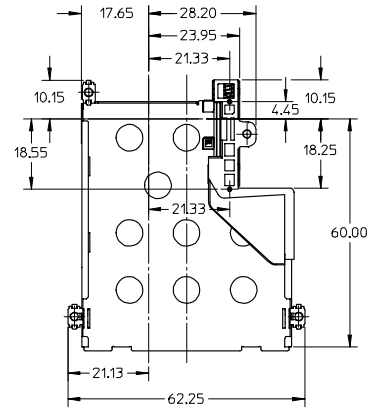
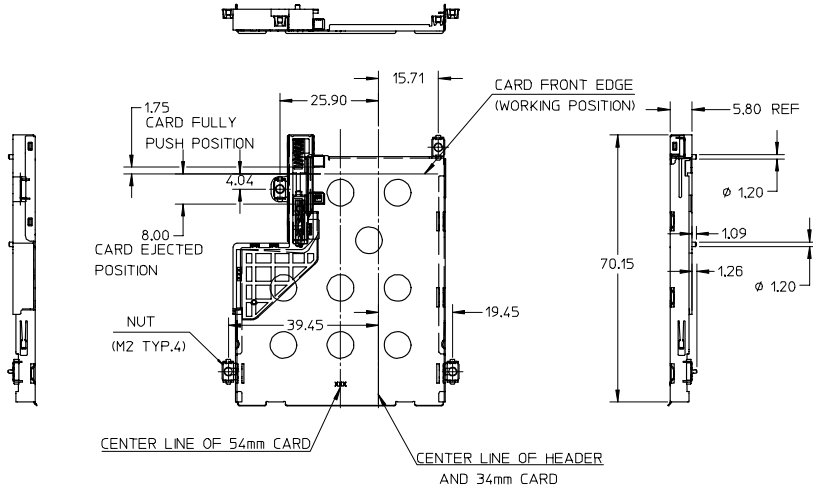


10 9 8 7 6 5 4 3 2 1

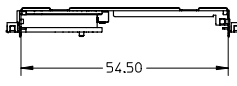


NOTES:

1. SLOT DESIGN BASED ON EXPRESS CARD ASSOC. REV:A;
2. THIS SLOT TO BE COMPATIBLE BOTH 34mm CARD AND 54mm CARD,
3. THE EJECTOR MECHANISM TO BE ASSEMBLED BASES ON 34mm CARD CENTER LINE;
4. WHEN DELIVERING, THE CAM SLIDER MUST KEEP RELEASE STATUS, (CARD EJECTED OUT POSITION);
5. APPLICABLE HEADER PLEASE REFER TO SHEET 2
6. MATERIAL:
 SHELL: STAINLESS STEEL
 STAND OFF: STAINLESS STEEL
 NUT: STAINLESS STEEL
 COIL SPRING: STEEL WIRE
 CAM SLIDER: HIGH TEMPERATURE THERMOPLASTIC
 CAM SLIDER HOUSING: HIGH TEMPERATURE THERMOPLASTIC
 CAM PIN: STAINLESS STEEL
7. PRODUCT SPECIFICATION PLEASE REFER TO PS-47202-001.



CARD FRONT EDGE (WORKING POSITION)
 5.80 REF
 70.15
 1.20
 1.09
 1.26
 1.20
 1.75 CARD FULLY PUSH POSITION
 4.04
 8.00 CARD EJECTED POSITION
 NUT (M2 TYP.4)
 39.45
 19.45
 CENTER LINE OF 54mm CARD
 CENTER LINE OF HEADER AND 34mm CARD



NEW RELEASE EC NO: SH2005-0413 DRAWN: BAO CHECK: CHIKO APPR: YTIAP 2005/07/01 2005/07/01 2005/07/01	QUALITY SYMBOLS ▽=0 ▽=0	GENERAL TOLERANCES (UNLESS SPECIFIED)		DIMENSION STYLE	SCALE	DESIGN UNITS	THIRD ANGLE PROJECTION EXPRESS CARD BOTTOM MOUNT PUSH-PUSH TYPE MOLEX INCORPORATED
		mm	INCH	MM ONLY	1:1	METRIC	
		4 PLACES ± ---	± ---	DRAWN BY	DATE	TITLE	
		3 PLACES ± ---	± ---	R.B IAN	2004/12/14	EXPRESS CARD BOTTOM MOUNT PUSH-PUSH TYPE	
2 PLACES ± 0.2	± ---	CHECKED BY	DATE				
1 PLACE ± 0.3	± ---	APPROVED BY	DATE				
ANGULAR ± 2 °		DRAFT WHERE APPLICABLE MUST REMAIN WITHIN DIMENSIONS		MATERIAL NO.	DOCUMENT NO.		SHEET NO.
				47202-0003	SD-47202-001		1 OF 4
				THIS DRAWING CONTAINS INFORMATION THAT IS PROPRIETARY TO MOLEX INCORPORATED AND SHOULD NOT BE USED WITHOUT WRITTEN PERMISSION			

9 8 7 6 5 4 3 2 1

10 9 8 7 6 5 4 3 2 1

F

E

D

C

B

A

F

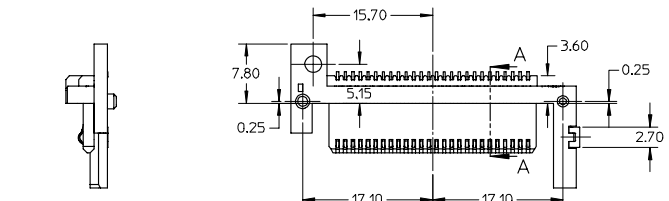
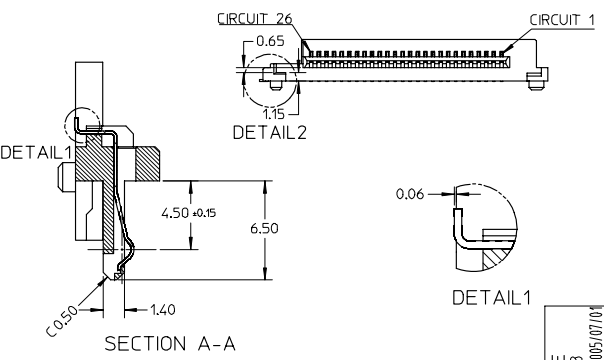
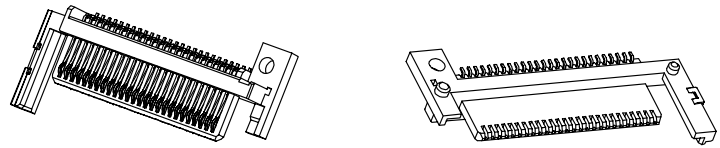
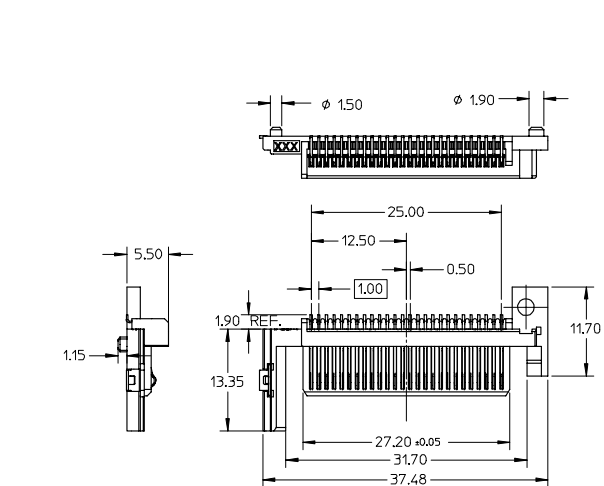
E

D

C

B

A



- NOTES:
1. MATERIAL:
HOUSING: HIGH TEMPERATURE THERMOPLASTIC,
FITTING NAIL: COPPER ALLOY,
TERMINAL: COPPER ALLOY,
 2. FINISH:
TERMINAL:
UNDERPLATING: Ni OVERALL,
SELECTIVE GOLD ON CONTACT AREA,
THICKNESS: 15 MICRONCH MINIMUM,
SELECTIVE PURE TIN ON SOLDER TAIL AREA,
THICKNESS: 40-100 MICRONCH,
 3. COPLANARITY AT SOLDER TAIL TO BE 0.10 MAXIUM,
 4. APPLIABLE CARD SLOT PLEASE REFER TO SHEET 1
 5. PRODUCT SPECIFICATION PLEASE REFER TO PS-47202-001

NEW RELEASE EC NO: SH2005-0413 DRWNL:BAO CHKCD: 2005/07/01 APPR: YTYAP 2005/07/01	QUALITY SYMBOLS ▽=0 ▽=0	GENERAL TOLERANCES (UNLESS SPECIFIED)		DIMENSION STYLE MM ONLY		SCALE 2:1	DESIGN UNITS METRIC	THIRD ANGLE PROJECTION	
		mm	INCH	DRAWN BY R.B IAN	DATE 2004/12/14	EXPRESS CARD BOTTOM MOUNT PUSH-PUSH TYPE			
		4 PLACES ± ---	± ---	CHECKED BY	DATE				
		3 PLACES ± ---	± ---	APPROVED BY	DATE	MOLEX INCORPORATED			
2 PLACES ± 0.2	± ---	DRAFT WHERE APPLICABLE MUST REMAIN WITHIN DIMENSIONS		MATERIAL NO. 47202-0002	DOCUMENT NO. SD-47202-001	SHEET NO. 2 OF 4			
1 PLACE ± 0.3	± ---	THIS DRAWING CONTAINS INFORMATION THAT IS PROPRIETARY TO MOLEX INCORPORATED AND SHOULD NOT BE USED WITHOUT WRITTEN PERMISSION							
ANGULAR ± 2 °									

9 8 7 6 5 4 3 2 1

10 9 8 7 6 5 4 3 2 1

F

E

D

C

B

A

F

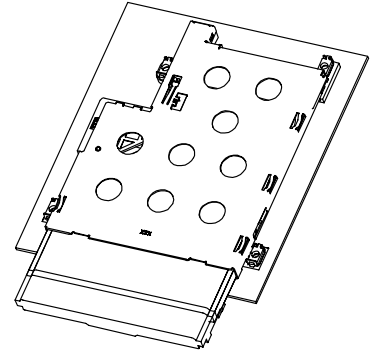
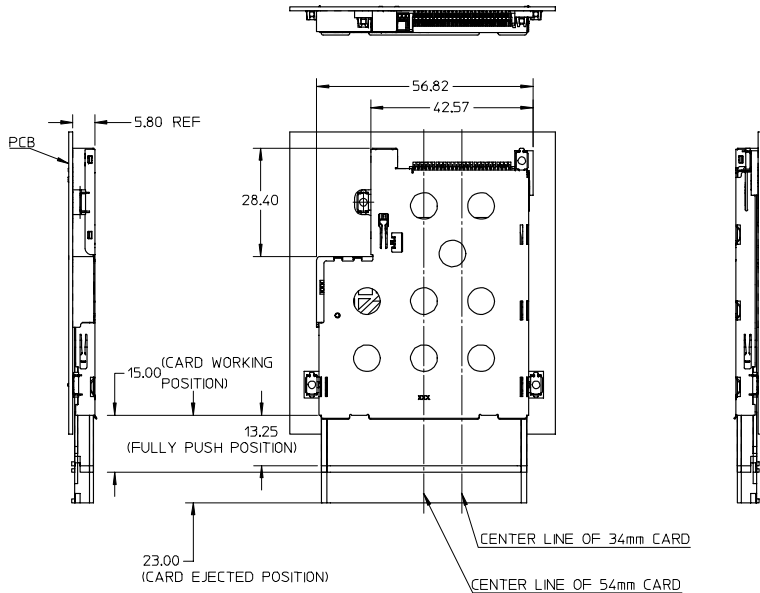
E

D

C

B

A

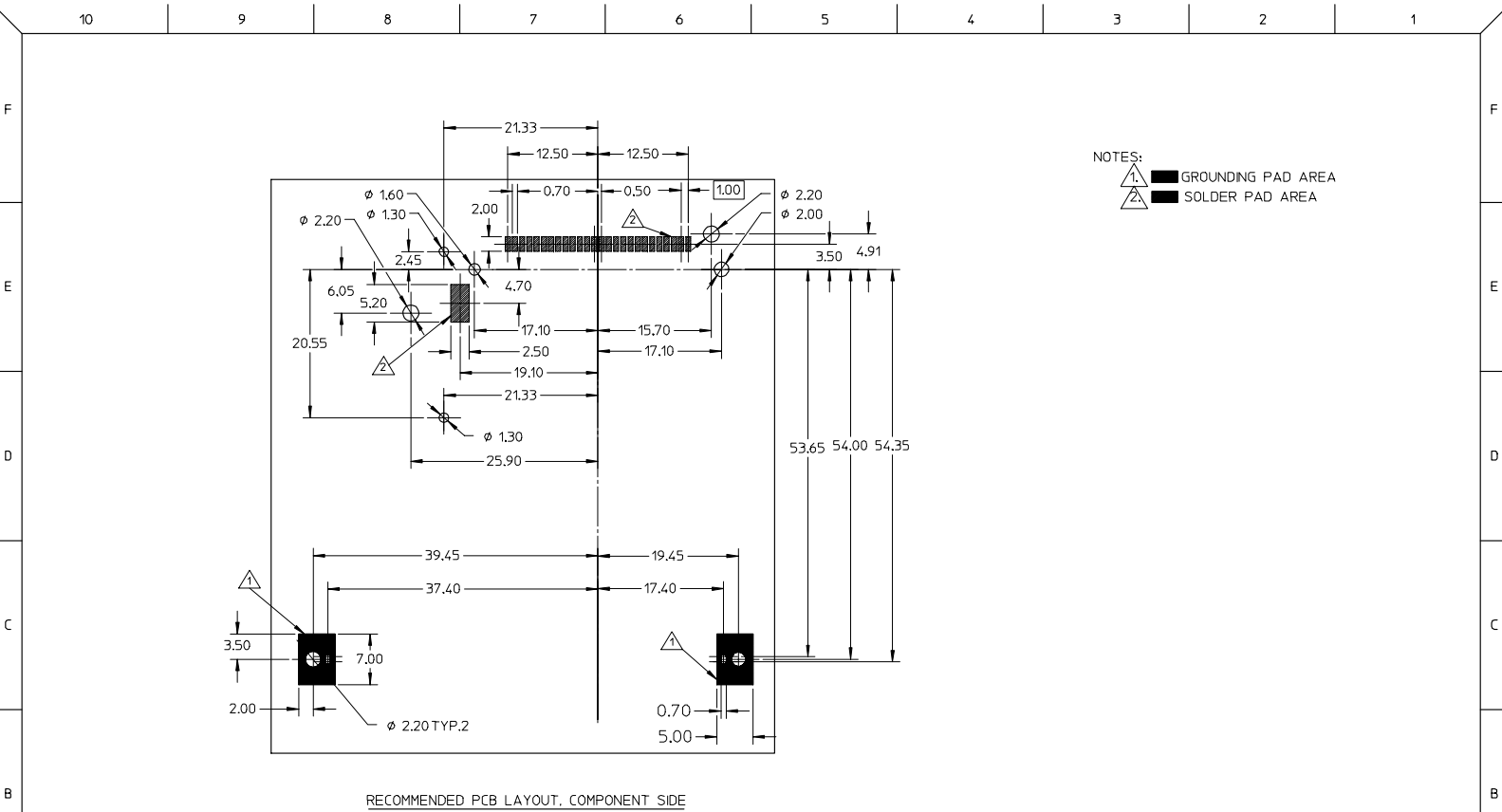


NOTES:

1. COMPONENTS:
HEADER: SHEET 2
EJECTOR: SHEET 1
2. PCB LAYOUT PLEASE REFER TO SHEET 4;
3. TAIL COMPLANARITY OF HEADER TO BE 0.10 MAXIMUM;
TRUE POSITION IS 0.15 MAXIMUM BETWEEN SOLDER TAILS;
4. NON REFLOW PROCESS FOR CARD SLOT.
5. SCREW FASTENING TORQUE: 2.0 KGF-CM;
6. PRODUCT SPECIFICATION PLEASE REFER TO PS-47202-001.

NEW RELEASE EC NO: SH2005-0413 DRAWN: BAO CHECKED: CHIKO APPR: YITAP 2005/07/01 2005/07/01 2005/07/01	QUALITY SYMBOLS	GENERAL TOLERANCES (UNLESS SPECIFIED) 4 PLACES ± 0.15 3 PLACES ± 0.2 2 PLACES ± 0.3 1 PLACE ± 0.5 ANGULAR ± 2°	DIMENSION STYLE	SCALE	DESIGN UNITS	THIRD ANGLE PROJECTION	
	▽=0 ▽=0		MM ONLY	1:1	METRIC		
			DRAWN BY	DATE	TITLE		
			R. BIAN	2004/12/14	EXPRESS CARD BOTTOM MOUNT PUSH-PUSH TYPE		
		CHECKED BY	DATE	MOLEX INCORPORATED			
		APPROVED BY	DATE	MATERIAL NO. 47202-0001			
				DOCUMENT NO. SD-47202-001		SHEET NO. 3 OF 4	
		DRAFT WHERE APPLICABLE MUST REMAIN WITHIN DIMENSIONS	THIS DRAWING CONTAINS INFORMATION THAT IS PROPRIETARY TO MOLEX INCORPORATED AND SHOULD NOT BE USED WITHOUT WRITTEN PERMISSION				

9 8 7 6 5 4 3 2 1



NOTES:
 GROUNDING PAD AREA
 SOLDER PAD AREA

RECOMMENDED PCB LAYOUT, COMPONENT SIDE

NEW RELEASE EC NO. SH2005-0413 DRWNLB00 LBA0 CHKD: APPR: YTYAP 2005/07/01	QUALITY SYMBOLS	GENERAL TOLERANCES (UNLESS SPECIFIED)	DIMENSION STYLE MM ONLY	SCALE 2:1	DESIGN UNITS METRIC	THIRD ANGLE PROJECTION																											
	$\nabla=0$ $\nabla=0$	<table border="1"> <thead> <tr> <th></th> <th>mm</th> <th>INCH</th> </tr> </thead> <tbody> <tr> <td>4 PLACES</td> <td>± ---</td> <td>± ---</td> </tr> <tr> <td>3 PLACES</td> <td>± ---</td> <td>± ---</td> </tr> <tr> <td>2 PLACES</td> <td>± 0.05</td> <td>± ---</td> </tr> <tr> <td>1 PLACE</td> <td>±</td> <td>± ---</td> </tr> </tbody> </table>		mm	INCH	4 PLACES	± ---	± ---	3 PLACES	± ---	± ---	2 PLACES	± 0.05	± ---	1 PLACE	±	± ---	<table border="1"> <thead> <tr> <th>DRAWN BY</th> <th>DATE</th> </tr> </thead> <tbody> <tr> <td>R.B IAN</td> <td>2004/12/14</td> </tr> <tr> <th>CHECKED BY</th> <th>DATE</th> </tr> <tr> <td></td> <td></td> </tr> <tr> <th>APPROVED BY</th> <th>DATE</th> </tr> <tr> <td></td> <td></td> </tr> </tbody> </table>	DRAWN BY	DATE	R.B IAN	2004/12/14	CHECKED BY	DATE			APPROVED BY	DATE			TITLE		
		mm	INCH																														
	4 PLACES	± ---	± ---																														
3 PLACES	± ---	± ---																															
2 PLACES	± 0.05	± ---																															
1 PLACE	±	± ---																															
DRAWN BY	DATE																																
R.B IAN	2004/12/14																																
CHECKED BY	DATE																																
APPROVED BY	DATE																																
DESCRIPTION	DRAFT WHERE APPLICABLE MUST REMAIN WITHIN DIMENSIONS	MATERIAL NO. 47202-0001	DOCUMENT NO. SD-47202-001	EXPRESS CARD BOTTOM MOUNT PUSH-PUSH TYPE MOLEX INCORPORATED																													
REV A		SIZE A3	THIS DRAWING CONTAINS INFORMATION THAT IS PROPRIETARY TO MOLEX INCORPORATED AND SHOULD NOT BE USED WITHOUT WRITTEN PERMISSION																														