

10 9 8 7 6 5 4 3 2 1

F

E

D

C

B

A

F

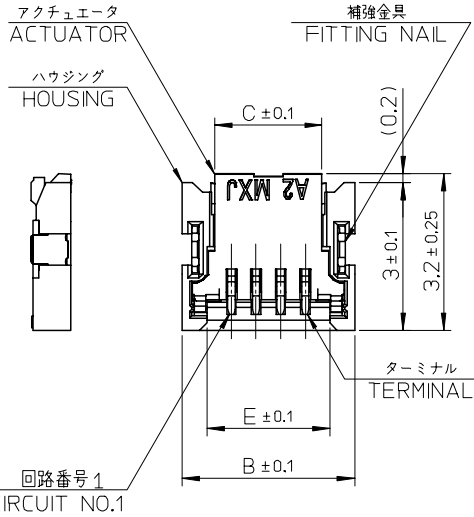
E

D

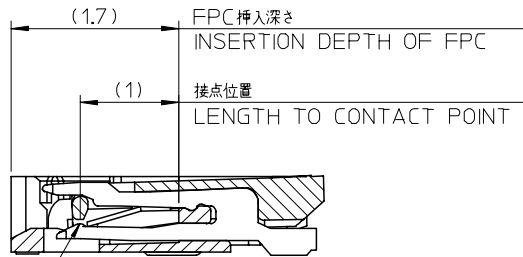
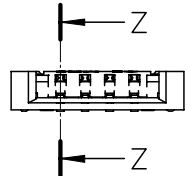
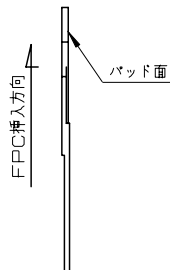
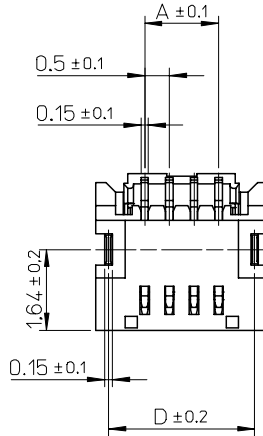
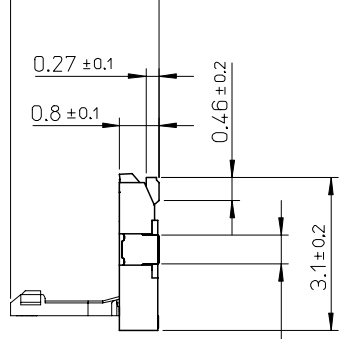
C

B

A



(3.01) (アクチュエータが開口した状態)
(WHEN ACTUATOR IS OPENED)



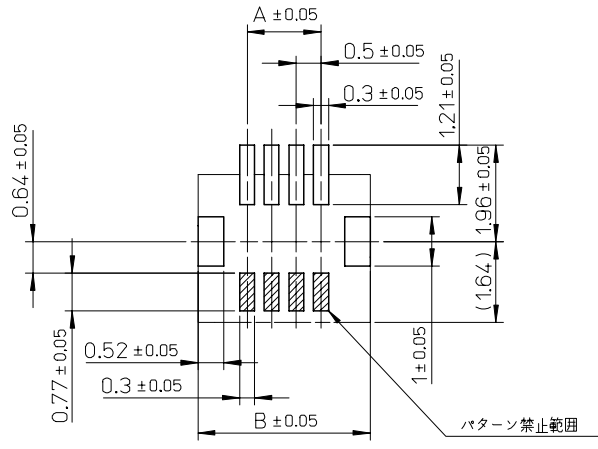
接点部(下面)
CONTACT POINT (BOTTOM CONTACT)
SECTION Z-Z

注記
NOTES:

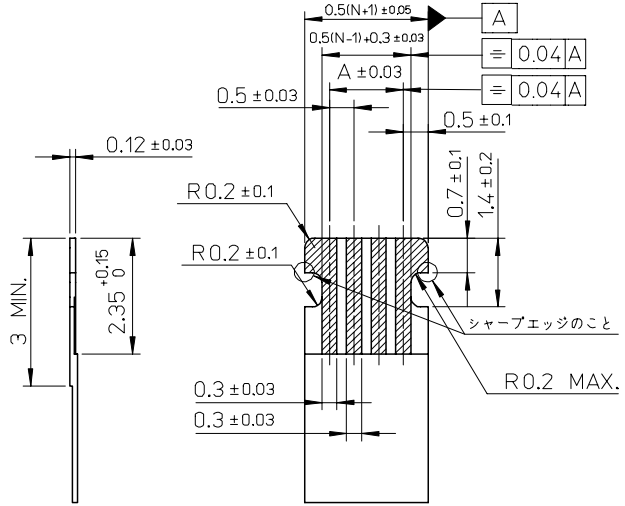
- 材質 MATERIAL
ハウジング:耐熱性樹脂、ガラス充填、UL94V-0
HOUSING:HEAT RESISTANCE POLYMER, GLASS FILLED, UL94V-0
アクチュエータ:耐熱性樹脂、ガラス充填、UL94V-0
ACTUATOR:HEAT RESISTANCE POLYMER, GLASS FILLED, UL94V-0
ターミナル:銅合金 (t=0.15)
TERMINAL: COPPER ALLOY (t=0.15)
補強金具:銅合金 (t=0.15)
NAIL: COPPER ALLOY (t=0.15)
- めっき仕様 PLATING
ターミナル: 部分金メッキ
接点部 0.1マイクロメートル以上
半田付け部 0.05マイクロメートル以上
TERMINAL: SEPARATED GOLD PLATING
CONTACT AREA 0.1 MICROMETER MINIMUM.
SOLDER TAIL AREA 0.05 MICROMETER MINIMUM.
下地 ニッケルメッキ 1.0マイクロメートル以上
UNDER PLATING; NICKEL PLATING 1.0 MICROMETER MINIMUM.
補強金具: 錫メッキ 1.0マイクロメートル以上
NAIL: TIN PLATING 1.0 MICROMETER MINIMUM.
下地 ニッケルメッキ 1.0マイクロメートル以上
UNDER PLATING; NICKEL PLATING 1.0 MICROMETER MINIMUM.
- 平坦度は、0.1mm以下とする。
TAILS AND NAILS COPLANARITY TO BE 0.1mm MAXIMUM.
- ELV AND RoHS COMPLIANT.

| | | | | | | | |
|-----|------|------|-----|-----|------------------------------|----------------------|----------------------|
| 4.5 | 4.97 | 4.18 | 5.5 | 3.5 | 501461-0802 | 501461-0808 | 8 |
| E | D | C | B | A | エンボス梱包 EMBOSSED PACKAGING | 製品番号 MATERIAL NO. | 極数(N) CIRCUITS(N) |

| | | | | | | | |
|--|---------------------------------------|-------|--|--|---|------------------------|------------------------|
| RELEASED EC NO: J2008-0606 DRWN: AOYAGI 2007/09/06 CHKD: HARUYAMA 2007/09/10 APPR: NUKITA 2007/09/10 | GENERAL TOLERANCES (UNLESS SPECIFIED) | | DIMENSION STYLE MM ONLY | | SCALE 10:1 | DESIGN UNITS METRIC | THIRD ANGLE PROJECTION |
| | 10 UNDER | ±0.2 | DRAWN BY Y. AOYAGI | | TITLE 0.5 FPC CONN BACK FLIP HGT=0.8 HSG ASSY | | |
| | 10 OVER 30 UNDER | ±0.25 | CHECKED BY T. HARUYAMA | | APPROVED BY N. UKITA | | |
| | 30 OVER | ±0.3 | APPROVED BY N. UKITA | | MATERIAL NO. SD-501461-003 | | |
| 0 | ANGULAR | ±1 | DRAFT WHERE APPLICABLE MUST REMAIN WITHIN DIMENSIONS | | SEE TABLE | | SHEET NO. 1 OF 2 |



推奨基板寸法
RECOMMENDED P.C.BOARD PATTERN LAYOUT



推奨FPC寸法
RECOMMENDED FPC PATTERN LAYOUT

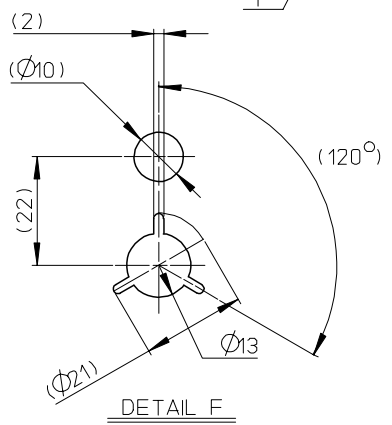
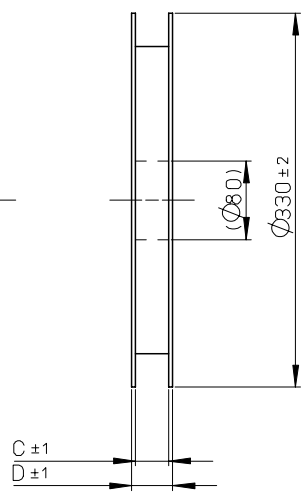
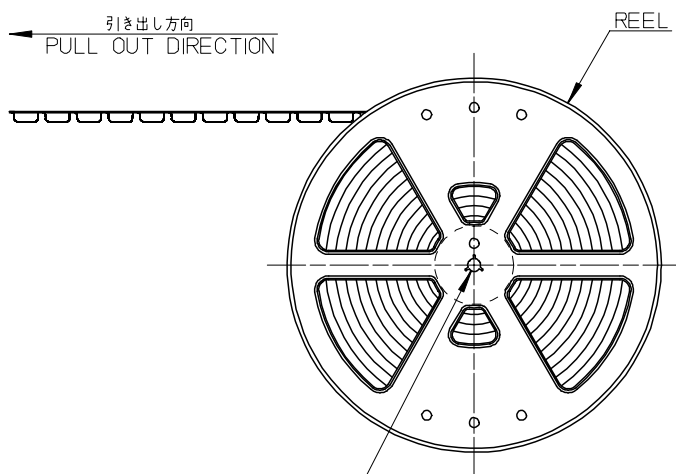
FPCについて：
 抜き方向は、導体側から補強板側を推奨します。
 補強フィルム材質は、ポリイミドを推奨します。
 接着剤は、熱硬化接着剤を推奨します。
 尚、接着剤の接点部への付着は、導通不良の原因となりますので染み出しが無いよう、お願いします。

ABOUT FPC :
 RECOMMENDED PUNCHER DIRECTION :
 FROM CONDUCTOR SIDE TO STIFFNER FILME SIDE.
 RECOMMENDED MATERIAL :
 STIFFNER FILME : POLYIMIDE
 BONDING AGENT : THRMOSSETTING AGENT
 PLEASE PUT APPROPRIATE AMOUNT OF ASHESIVE MAY CAUSE
 THE DEFECT IN ELECTRICAL CONTINUITY.

| | | | | | | |
|--|---------------------------------------|--|-----------------------------|--------------------|---|------------------------|
| RELEASED EC NO: J2008-0606 DRWN: AOYAGI 2007/09/06 CHKD: HARUYAMA 2007/09/10 APPR: NUKITA 2007/09/10 | GENERAL TOLERANCES (UNLESS SPECIFIED) | | DIMENSION STYLE MM ONLY | SCALE 10:1 | DESIGN UNITS METRIC | THIRD ANGLE PROJECTION |
| | 10 UNDER | ± 0.2 | DRAWN BY Y. AOYAGI | DATE 2007/09/05 | TITLE 0.5 FPC CONN BACK FLIP HGT=0.8 HSG ASSY | |
| | 10 OVER 30 UNDER | ± 0.25 | CHECKED BY T. HARUYAMA | DATE 2007/09/05 | MOLEX INCORPORATED | |
| | 30 OVER | ± 0.3 | APPROVED BY N. UKITA | DATE 2007/09/05 | | |
| | ANGULAR | ± 1 ° | MATERIAL NO. SEE SHEET 1 | | DOCUMENT NO. SD-501461-003 | SHEET NO. 2 OF 2 |
| 0 | REV | DRAFT WHERE APPLICABLE MUST REMAIN WITHIN DIMENSIONS THIS DRAWING CONTAINS INFORMATION THAT IS PROPRIETARY TO MOLEX INCORPORATED AND SHOULD NOT BE USED WITHOUT WRITTEN PERMISSION | | | | |

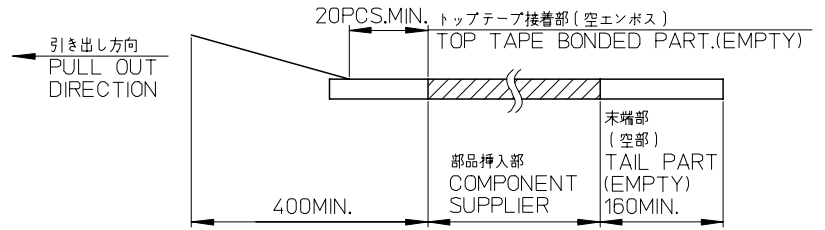
10 9 8 7 6 5 4 3 2 1

F
E
D
C
B
A



NOTES

- 製品詳細寸法については製品単体図面を参照下さい。
RE DETAILED DIMENSION, SEE PRODUCT DRAWING.
- 梱包数量: 3000個/リール
NUMBER OF CONNECTORS 3000PCS/REEL
- リードテープ長さ
LEAD TAPE LENGTH



- 材料
MATERIAL
キャリアテープ(CARRIURE TAPE): ポリスチレン (POLYSTYRENE)
トップテープ(TOP TAPE): PET, PE, PEF
リール(REEL): ポリスチレン (PS) <リサイクル材を含む>
POLYSTYRENE(PS) <RECYCLE MATERIAL CONTAIED>
- ELV及びRoHS適合品。
ELV AND RoHS COMPLIANT.

501461-**02 MODEL NO.

| | | | | | | | |
|--|---------------------------------------|------------|----------------------------|--|---|------------------------|------------------------|
| RELEASED EC NO: J2008-0606 DRWN: AOYAGI 2007/09/06 CHKD: HARUYAMA 2007/09/10 APPR: NUKITA 2007/09/10 | GENERAL TOLERANCES (UNLESS SPECIFIED) | | DIMENSION STYLE MM ONLY | | SCALE --- | DESIGN UNITS METRIC | THIRD ANGLE PROJECTION |
| | 10 UNDER | ± 0.2 | DRAWN BY Y. AOYAGI | DATE 2007/09/05 | TITLE 0.5 FPC CONN BACK FLIP H=0.8 EMBSTP PKG | | |
| | 10 OVER 30 UNDER | ± 0.25 | CHECKED BY T. HARUYAMA | DATE 2007/09/05 | MATERIAL NO. SEE SHEET 2 | | |
| | 30 OVER | ± 0.3 | APPROVED BY N. UKITA | DATE 2007/09/05 | DOCUMENT NO. SD-501461-004 | | |
| 0 | DESCRIPTION | ANGULAR | $\pm 1^\circ$ | DRAFT WHERE APPLICABLE MUST REMAIN WITHIN DIMENSIONS | | SHEET NO. 1 OF 2 | |

10 9 8 7 6 5 4 3 2 1

F

E

D

C

B

A

F

E

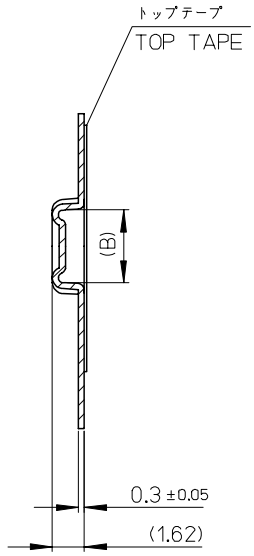
D

C

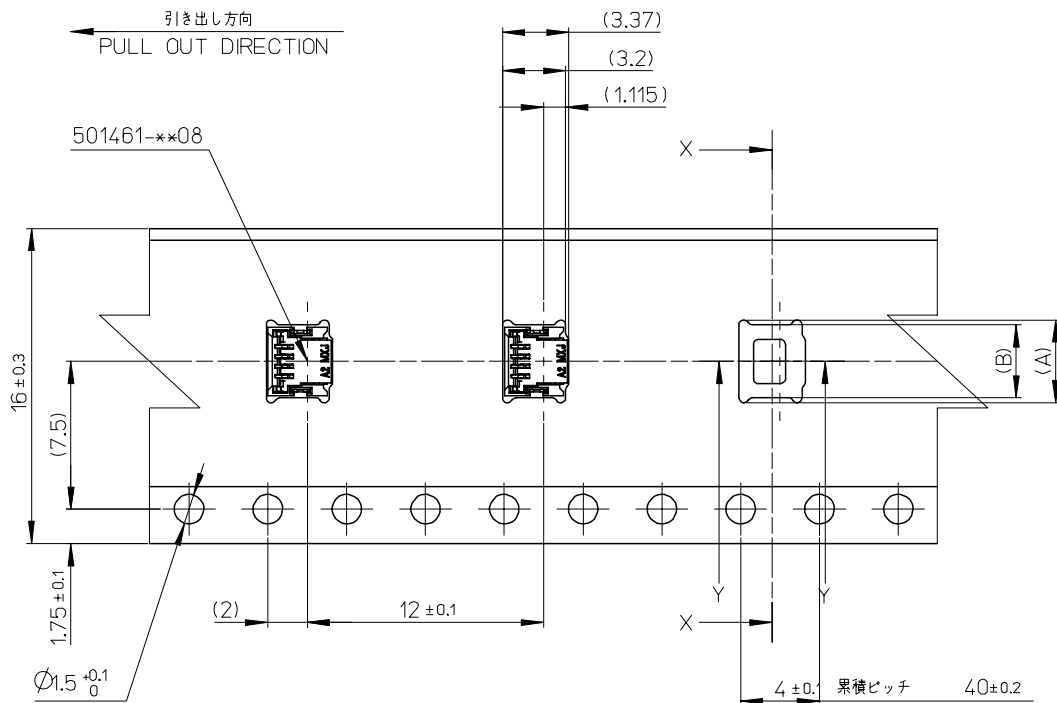
B

A

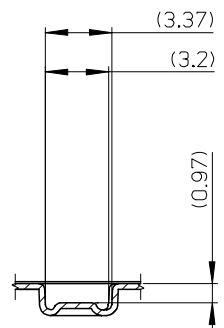
引き出し方向
PULL OUT DIRECTION



SECT. X-X



16mm幅キャリアテープ
16mm WIDTH CARRIER TAPE



SECT. Y-Y

| | | | | | | |
|--------------------------------|------|------|-----|-----|--------------|----------------|
| 16 | 21.4 | 17.4 | 5.7 | 6.2 | 501461-0802 | 8 |
| キャリアテープ幅 CARRIER TAPE WIDTH | D | C | (B) | (A) | MATERIAL NO. | 極数 CIRCUITS |

| | | | | | | | |
|--|---------------------------------------|--|----------------------------|---|---|------------------------|------------------------|
| RELEASED EC NO: J2008-0606 DRWN: AOYAGI 2007/09/06 CHKD: HARUYAMA 2007/09/10 APPR: NUKITA 2007/09/10 | GENERAL TOLERANCES (UNLESS SPECIFIED) | | DIMENSION STYLE MM ONLY | | SCALE --- | DESIGN UNITS METRIC | THIRD ANGLE PROJECTION |
| | 10 UNDER | ± 0.2 | DRAWN BY Y. AOYAGI | DATE 2007/09/05 | TITLE 0.5 FPC CONN BACK FLIP H=0.8 EMBSTP PKG | | |
| | 10 OVER 30 UNDER | ± 0.25 | CHECKED BY T. HARUYAMA | DATE 2007/09/05 | APPROVED BY N. UKITA 2007/09/05 | | |
| | 30 OVER | ± 0.3 | MATERIAL NO. SEE TABLE | | DOCUMENT NO. SD-501461-004 | | SHEET NO. 2 OF 2 |
| 0 | DESCRIPTION | DRAFT WHERE APPLICABLE MUST REMAIN WITHIN DIMENSIONS | | MOLEX INCORPORATED THIS DRAWING CONTAINS INFORMATION THAT IS PROPRIETARY TO MOLEX INCORPORATED AND SHOULD NOT BE USED WITHOUT WRITTEN PERMISSION | | | |