

FEATURES AND SPECIFICATIONS

Features and Benefits

- Locking tang provides terminal retention to housing

Reference Information

Packaging: Reel or bag

Use With: [35507](#), [51065](#), [51089](#), [51090](#) and [87369](#) housings

Designed In: Millimeters

Electrical

Voltage: 125V

Current:

AWG	24	26	28	30
Amperes	2.0	1.5	1.0	0.5

Contact Resistance: 20mΩ max.

Dielectric Withstanding Voltage: 500V AC/1 min.

Insulation Resistance: 1000 MΩ min.

Physical

Contact: Phosphor Bronze

Plating: Tin

Wire Range: 24 to 30 AWG

Insulation Range: 1.40mm dia. max.

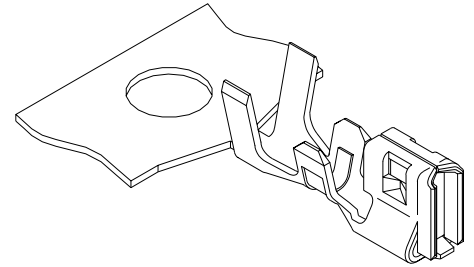
Strip Length: 1.3 to 1.8mm

Operating Temperature: -40 to +105°C



2.00mm (.079") Pitch Wire-to-Board Crimp Terminal

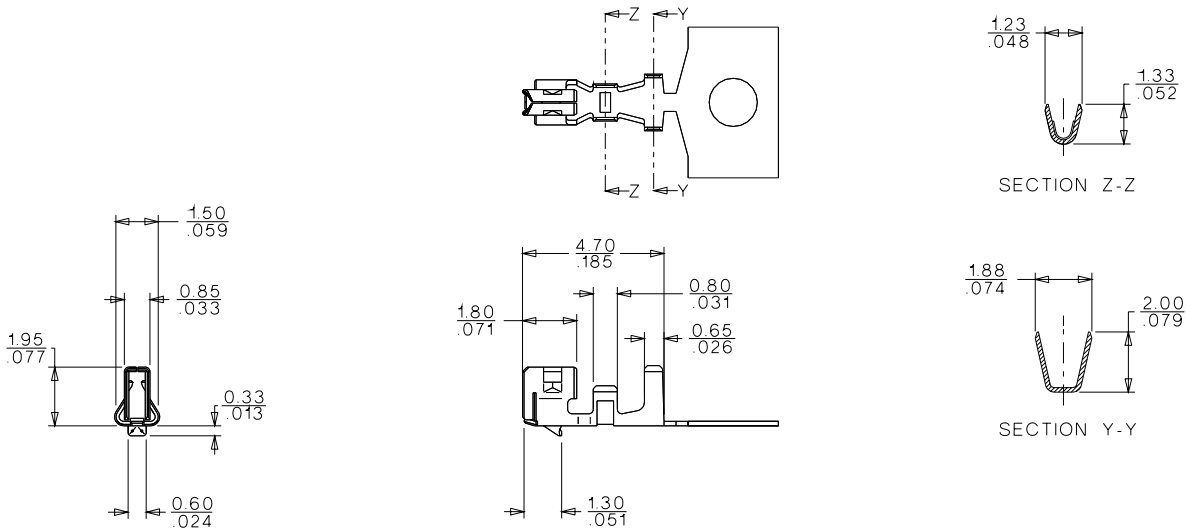
50212



B

2.00 to 2.50mm (.079 to .098") Pitch

CATALOG DRAWING (FOR REFERENCE ONLY)



ORDERING INFORMATION

Order No.	Terminal
50212-8000	Reel
50212-8100	Bag