

PLEASE CHECK WWW.MOLEX.COM FOR LATEST PART INFORMATION

Part Number: **5024268030**
Status: **Active**
Overview: SlimStack™ 0.40mm Pitch Board-to-Board Connectors
Description: 0.40mm Pitch SlimStack Board-to-Board Receptacle, Surface Mount, Dual Row, Vertical, 1.00mm/ 1.50mm Stacking Height, with Solder Tabs, with Vacuum Tape, 80 Circuits

Documents:

[3D Model](#) [Packaging Specification SPK-502426-001-001 \(PDF\)](#)
[Drawing \(PDF\)](#) [RoHS Certificate of Compliance \(PDF\)](#)

General

Product Family PCB Receptacles
Series [502426](#)
Application Board-to-Board, Signal
Overview [SlimStack™ 0.40mm Pitch Board-to-Board Connectors](#)
Product Name SlimStack
UPC 800756714790

Physical

Circuits (Loaded) 80
Circuits (maximum) 80
Color - Resin Black
Durability (mating cycles max) 30
Glow-Wire Capable No
Lock to Mating Part Yes
Mated Height 1.00mm, 1.50mm
Material - Metal Phosphor Bronze
Material - Plating Mating Gold
Material - Plating Termination Gold
Net Weight 67.700/mg
Number of Rows 2
Orientation Vertical
PCB Locator No
PCB Retention Yes
Packaging Type Embossed Tape on Reel
Pitch - Mating Interface 0.40mm
Polarized to Mating Part No
Polarized to PCB No
Temperature Range - Operating -25° to +85°C
Termination Interface: Style Surface Mount

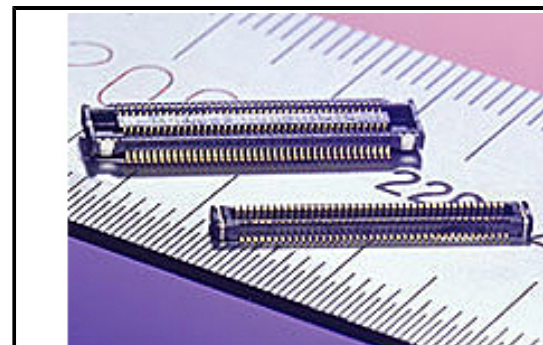
Electrical

Current - Maximum per Contact 0.3A
Voltage - Maximum 50V AC/DC

Material Info

Reference - Drawing Numbers

Packaging Specification SPK-502426-001-001
Sales Drawing SD-502426-003, SD-502426-004



Series image - Reference only

EU ELV

Not Relevant

EU RoHS

Compliant

REACH SVHC

Not Contained Per -
ED/61/2018 (27 June
2018)

Halogen-Free

Status

Low-Halogen

For more information, please visit [Contact US](#)

China ROHS

ELV

RoHS Phthalates

China RoHS

Green Image

Not Relevant

Not Contained

Search Parts in this Series

[502426](#) Series

Mates With

[502430](#) PCB Header . [503460](#) PCB Header