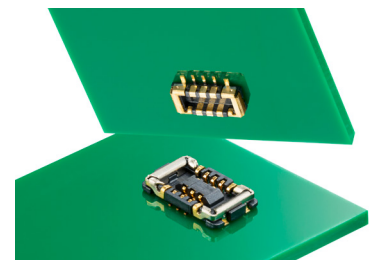


# SlimStack 0.35mm Pitch Board-to-Board Connectors

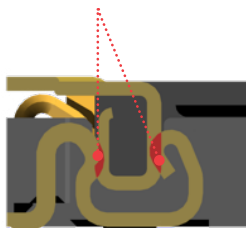
# molex

Robust SlimStack 0.35mm-Pitch Board-to-Board Connectors deliver upscaled performance with up to 5.0A power and proprietary full-armor housing protection, together with mating guidance and electrical contact assurance, for superior reliability in challenging applications

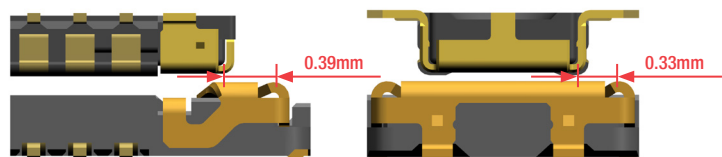


## Features and Advantages

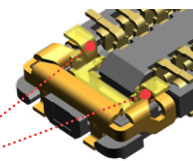
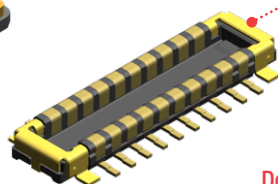
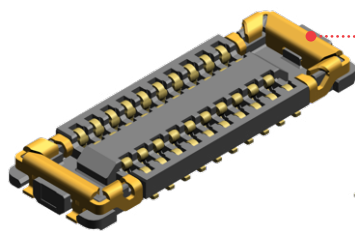
**Dual-Contact Design**  
Provides secure reliability



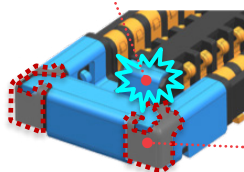
**Wide Alignment Area**  
Provides easy and secure mating



**Metal Power Armor Nail Feature**  
Provides housing protection with up to 3.0A current



**Full armor design that wraps connector from inside and outside**  
Prevents damage during assembly

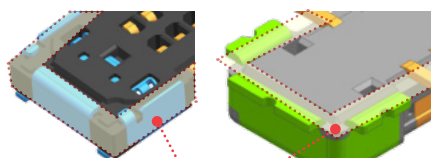


Mold (for max. protection)

**Double Contact Armor Nail**  
Provides reliable contact interface with flexible arm springs and two-point contact

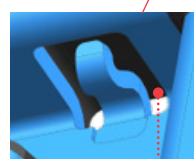
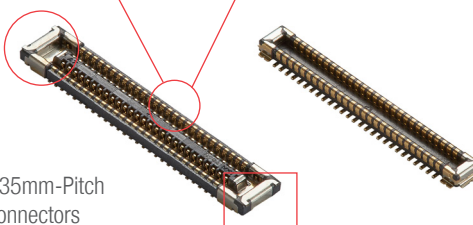


**Over-molded contact terminals**  
Simplifies assembly and offers improved part structure and reliability



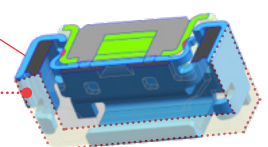
**3-sided SMT**  
Offers improved solder strength

SlimStack 0.35mm-Pitch Full Armor Connectors



**Power F/Nail structure enables power delivery up to 5.0A**  
Meets customers' requirement for high power in compact package

2.5A



**3-Sided SMT**

# SlimStack 0.35mm Pitch Board-to-Board Connectors



## Markets and Applications

### Consumer

- Smartphones
- Tablet PCs
- Wearable devices
- Portable audio
- Portable navigation equipment
- IoT and smart home devices
- AR/VR devices
- 5G and RF devices



Drones



Medical Device



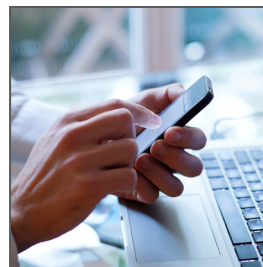
Patient Monitoring

### Medical Devices

- Patient monitoring
- Therapeutic and surgical



Wearable Device



Smartphone

### Defense

- Unmanned vehicles
- Aircraft avionics

## Specifications

### REFERENCE INFORMATION

Packaging: Embossed Tape with Cover  
 Designed In: Millimeters  
 RoHS: Yes  
 Halogen Free: Yes

### ELECTRICAL

Voltage (max.): 50V  
 Current (max.):  
     0.3A Signal / 3.0A Nail (SSB Series)  
     0.3A Signal / 5.0A Nail (Full Armor)  
 Contact Resistance (max.):  
     Signal: 60 to 80 Milliohms  
     Nail: 30 Milliohms  
 Dielectric Withstanding Voltage : 250V AC (rms)  
 Insulation Resistance : 100 Megaohms min.

### MECHANICAL

Pitch: 0.35mm  
 Mated Height:  
     0.60mm (SSB6)  
     0.60 to 1.00mm (SSB RP)  
     0.80mm (Full armor)  
 Width: 2.00 to 2.20mm  
 Length (Receptacle):  
     Pitch\*(N/2-1)+2.50mm (SSB6)  
     Pitch\*(N/2-1)+2.80mm (SSB RP)  
     Pitch\*(N/2-1)+3.40mm (Full armor)  
 Structure Type : Vertical type  
 Circuit Size:  
     10 to 70 Circuit (SSB6)  
     6 to 60 Circuit (SSB RP)  
     54 Circuit (Full armor)  
 Durability (max.): 30 cycles

### PHYSICAL

Housing: LCP Black, UL 94V-0  
 Contact: Copper Alloy  
 Plating: Contact Area - Gold  
           Solder Tail Area – Gold  
           Underplating - Nickel  
 Operating Temperature: -40 to +85°C

## Ordering Information

Order No.		Mated Height (mm)	Mated Width (mm)	Circuits
Receptacle	Plug			
<a href="#">207471</a>	<a href="#">207472</a>	0.80	2.20	54
<a href="#">504618</a>	<a href="#">504622</a>	0.60	2.00	10, 20, 24, 30, 34, 40, 50, 64, 70
<a href="#">505066-**22</a>	<a href="#">505070-***22</a>			6, 8, 10, 12, 14, 16, 20, 22, 24, 30, 34, 40, 42, 48, 50, 54
<a href="#">505270-**12</a>	<a href="#">505274-***12</a>	0.70		6, 10, 16, 20, 22, 24, 30, 34, 40, 54
		0.80		6, 10, 16, 20, 24, 30, 34, 40, 54
<a href="#">505413-**10</a>	<a href="#">505417-***10</a>	0.90		6, 30, 34, 40
		1.00		6, 30, 34, 40, 60

\*\* : circuit size

[www.molex.com/link/slimstack.html](http://www.molex.com/link/slimstack.html)

Molex is a registered trademark of Molex, LLC in the United States of America and may be registered in other countries; all other trademarks listed herein belong to their respective owners.