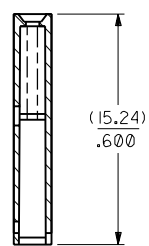
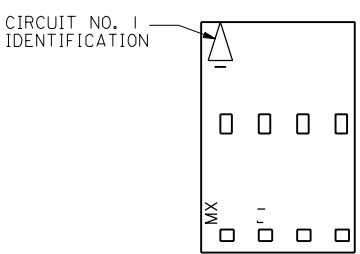
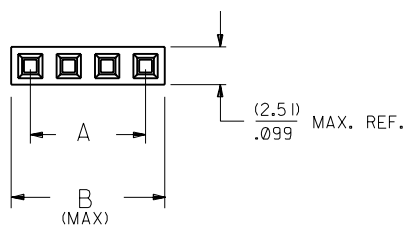


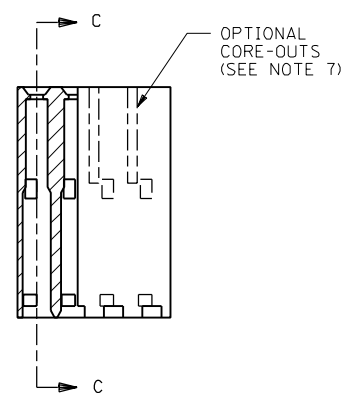
NOTES:

- 1) MATERIAL: G.F. POLYESTER
- 2) HOUSING TO BE USED WITH TERMINAL PT. NO. 70058-****
- 3) SEE CHART FOR CIRCUIT SIZES.
- 4) TO BE USED WITH (0.64)/.025 SQ. OR RD. PINS.
- 5) PARTS STACKABLE END TO END AND SIDE BY SIDE ON (2.54)/.100 CENTERS.
- 6) REFER TO PRODUCT SPECIFICATION NO. : P.S.-70058
- 7) PARTS MAY OR MAY NOT BE SUPPLIED WITH EXTERIOR CORE-OUT CONFIGURATION. SEE DWG. SD-70066-**** FOR OPTIONAL HOUSING DETAILS.
- 8) PACKAGE PER PK-70066-100.

OPTION "A"



SECTION C-C



CKT. SIZE	EDP. NO.	ENG. NO.	A	B
2	50-57-9002	70066-0001	(2.54) / .100	(5.05) / .199
3	50-57-9003	70066-0002	(5.08) / .200	(7.59) / .299
4	50-57-9004	70066-0003	(7.62) / .300	(10.13) / .399
5	50-57-9005	70066-0004	(10.16) / .400	(12.67) / .499
6	50-57-9006	70066-0005	(12.70) / .500	(15.21) / .599
7	50-57-9007	70066-0006	(15.24) / .600	(17.75) / .699
8	50-57-9008	70066-0007	(17.78) / .700	(20.29) / .799
9	50-57-9009	70066-0008	(20.32) / .800	(22.83) / .899
10	50-57-9010	70066-0009	(22.86) / .900	(25.37) / .999
11	50-57-9011	70066-0010	(25.40) / 1.000	(27.91) / 1.099
12	50-57-9012	70066-0011	(27.94) / 1.100	(30.45) / 1.199
13	50-57-9013	70066-0012	(30.48) / 1.200	(32.99) / 1.299
14	50-57-9014	70066-0013	(33.02) / 1.300	(35.53) / 1.399
15	50-57-9015	70066-0014	(35.56) / 1.400	(38.07) / 1.499
16	50-57-9016	70066-0015	(38.10) / 1.500	(40.61) / 1.599
17	50-57-9017	70066-0016	(40.64) / 1.600	(43.15) / 1.699
18	50-57-9018	70066-0017	(43.18) / 1.700	(45.69) / 1.799
19	50-57-9019	70066-0018	(45.72) / 1.800	(48.23) / 1.899
20	50-57-9020	70066-0019	(48.26) / 1.900	(50.77) / 1.999
21	50-57-9021	70066-0020	(50.80) / 2.000	(53.31) / 2.099
22	50-57-9022	70066-0021	(53.34) / 2.100	(55.85) / 2.199
23	50-57-9023	70066-0022	(55.88) / 2.200	(58.39) / 2.299
24	50-57-9024	70066-0023	(58.42) / 2.300	(60.93) / 2.399
25	50-57-9025	70066-0024	(60.96) / 2.400	(63.47) / 2.499

DIMENSIONS SHOWN (METRIC) INCH UNLESS OTHERWISE SPECIFIED TOLERANCES: ANGULAR ± 1/2°		▽ = 0 ▽ = 0 REVISE ONLY ON CAD SYSTEM	
3 PLACE ± .010 -- 2 PLACE ± .014 ± 0.25 1 PLACE --- ± 0.35		TITLE HOUSING CONNECTOR (2.54)/.100 GRID STACKABLE SINGLE ROW	
DRAFT WHERE APPLICABLE MUST REMAIN WITHIN DIMENSIONS		MFG. SH. REV. MOLEX INCORPORATED L1SLE,ILL. 60532 U.S.A.	
DRWG. NO. SD-70066-0001-0024		SHEET NO. 1 DATE 03/27/86	
FILE NAME T00660001		THIS DRAWING CONTAINS INFORMATION THAT IS PROPRIETARY TO MOLEX INC. AND SHOULD NOT BE USED WITHOUT WRITTEN PERMISSION.	
DRWG. BY: RS CHK'D. BY: WZ APP'D. BY: RL SCALE: 4:1		DIV. SIZE DA C	
LTR.	REVISIONS	LTR.	REVISIONS