

PLEASE CHECK WWW.MOLEX.COM FOR LATEST PART INFORMATION

Part Number: [50-57-9009](#)
Status: **Active**
Overview: [SL™ Modular Connectors](#)
Description: 2.54mm Pitch SL™ Crimp Housing, Single Row, Version A, Non-polarized, 9 Circuits

Documents:

| | |
|--|--|
| 3D Model | Product Specification PS-71851 (PDF) |
| Drawing (PDF) | Test Summary TS-70058-001 (PDF) |
| Product Specification PS-70058 (PDF) | RoHS Certificate of Compliance (PDF) |
| Product Specification PS-70400 (PDF) | |

Agency Certification

| | |
|-----|-----------|
| CSA | LR19980 |
| TUV | R72081037 |
| UL | E29179 |

General

| | |
|----------------|--|
| Product Family | Crimp Housings |
| Series | 70066 |
| Application | Signal, Wire-to-Board |
| Comments | Version A |
| Overview | SL™ Modular Connectors |
| Product Name | SL™ |

Physical

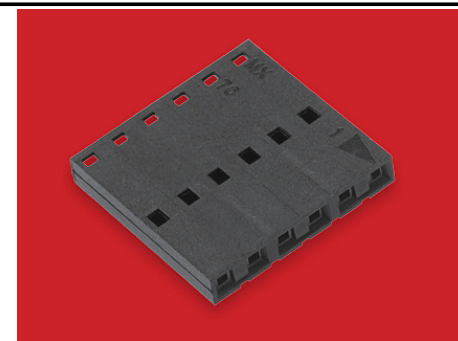
| | |
|-------------------------------|-----------------|
| Circuits (maximum) | 9 |
| Color - Resin | Black |
| Flammability | 94V-0 |
| Gender | Female |
| Glow-Wire Compliant | No |
| Material - Resin | Polyester Alloy |
| Number of Rows | 1 |
| Packaging Type | Bag |
| Panel Mount | No |
| Pitch - Mating Interface | 2.54mm |
| Stackable | Yes |
| Temperature Range - Operating | -40°C to +105°C |

Material Info

| | |
|-----------------|--------------|
| Old Part Number | 70066-0008 |
| UPC | 800753578210 |

Reference - Drawing Numbers

| | |
|-----------------------|------------------------------|
| Product Specification | PS-70058, PS-70400, PS-71851 |
| Sales Drawing | SD-70066-0001-0024 |
| Test Summary | TS-70058-001 |



Series

image - Reference only

EU RoHS

ELV and RoHS Compliant
REACH SVHC Contains SVHC: No
Low-Halogen Status Not Reviewed

China RoHS



Need more information on product environmental compliance?

Email productcompliance@molex.com
 For a multiple part number RoHS Certificate of Compliance, [click here](#)

Please visit the [Contact Us](#) section for any non-product compliance questions.

Search Parts in this Series

[70066Series](#)

Mates With

[8624](#) , [70203](#) , [70206](#) , [42375](#) , [42377](#)

Use With

[70058](#) , [71851](#)