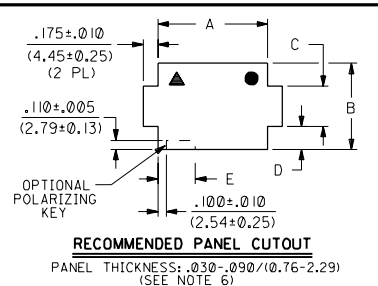


PART NO.	ENG. NO.	CIRCUIT SIZE	MATERIAL (SEE NOTE 1)	DIM. "A"	DIM. "B"	DIM. "C"
050-84-2010	42022-1A	1	A	1,080 (27.43)	.380 (9.65)	---
050-84-2011	42022-1B	1	B	---	---	---
050-84-2012	42022-1C	1	C	---	---	---
050-84-2020	42022-2A	2	A	1,080 (27.43)	.620 (15.75)	.300 (7.62)
050-84-2021	42022-2B	2	B	---	---	---
050-84-2022	42022-2C	2	C	---	---	---
050-84-2030	42022-3A	3	A	1,080 (27.43)	.620 (15.75)	.300 (7.62)
050-84-2031	42022-3B	3	B	---	---	---
050-84-2032	42022-3C	3	C	---	---	---
050-84-2040	42022-4A	4	A	1,080 (27.43)	.620 (15.75)	.300 (7.62)
050-84-2041	42022-4B	4	B	---	---	---
050-84-2042	42022-4C	4	C	---	---	---
050-84-2060	42022-6A	6	A	1,080 (27.43)	1,120 (28.45)	.800 (20.32)
050-84-2061	42022-6B	6	B	---	---	---
050-84-2062	42022-6C	6	C	---	---	---
PRELIMINARY	42022-8A	8	A	1,080 (27.43)	.620 (15.75)	.300 (7.62)
PRELIMINARY	42022-8B	8	B	---	---	---
PRELIMINARY	42022-8C	8	C	---	---	---
050-84-2090	42022-9A	9	A	1,080 (27.43)	1,120 (28.45)	.800 (20.32)
050-84-2091	42022-9B	9	B	---	---	---
050-84-2092	42022-9C	9	C	---	---	---
050-84-2120	42022-12A	12	A	1,080 (27.43)	1,120 (28.45)	.800 (20.32)
050-84-2121	42022-12B	12	B	---	---	---
050-84-2122	42022-12C	12	C	---	---	---
050-84-2150	42022-15A	15	A	1,080 (27.43)	1,120 (28.45)	.800 (20.32)
050-84-2151	42022-15B	15	B	---	---	---
050-84-2152	42022-15C	15	C	---	---	---



CIRCUIT SIZE	DIMENSIONS				
	A±.005	B±.005	C±.010	D±.010	E±.010
2	.565 (14.35)	.530 (13.46)	.340 (8.64)	.095 (2.41)	.250 (6.35)
3	.815 (20.70)	.530 (13.46)	.340 (8.64)	.095 (2.41)	.250 (6.35)
4	1.065 (27.05)	.530 (13.46)	.340 (8.64)	.095 (2.41)	.250 (6.35)
6	.565 (14.35)	1.030 (26.16)	.480 (12.19)	.275 (6.99)	.250 (6.35)
8	2.065 (52.45)	.530 (13.46)	.340 (8.64)	.095 (2.41)	.250 (6.35)
9	.815 (20.70)	1.030 (26.16)	.480 (12.19)	.275 (6.99)	.250 (6.35)
12	1.065 (27.05)	1.030 (26.16)	.480 (12.19)	.275 (6.99)	.350 (8.89)
15	1.315 (33.40)	1.030 (26.16)	.480 (12.19)	.275 (6.99)	.350 (8.89)

- NOTES:**
- MATERIAL CODES:
 "A"= NYLON TYPE 6/6, 94V-2
 COLOR: NATURAL (WHITE/TRANSLUCENT)
 "B"= NYLON TYPE 6/6, 94V-0
 COLOR: (BRICK RED)
 "C"= NYLON TYPE 6/6 94V-0
 COLOR: NATURAL (WHITE)
 - UNLESS OTHERWISE INDICATED, DIMENSIONS ARE FOR REFERENCE ONLY.
 - CAP HOUSINGS MATE WITH :
 - PLUG HOUSINGS, .084/(2.13) DIA. SERIES: (42021-***)
 - HOUSINGS DESIGNED TO BE USED WITH TERMINALS:
 - PINS, .084/(2.13) DIA. SERIES: (42023-****)
 - SOCKETS, .084/(2.13) DIA. SERIES: (42024-****)
 - CONTACTS ARE ON .250/(6.35) GRID CENTERLINE SPACING.
 - PANEL TO BE PUNCHED SO THAT THE HOUSING ENTERS THE PANEL OPPOSITE THE SIDE WITH THE BURR (I.E. OPPOSITE THE BREAK SIDE).
 - PRODUCT SPECIFICATION PS-42022-0001 APPLIES.

LEGEND:
 42022-*
 BASE NUMBER * MATERIAL CODE (SEE NOTE 1)
 CIRCUIT SIZE

▲ - CIRCUIT #1 LOCATION WHEN USING POLARIZING KEY OPTION WITH 2, 3, 4 AND 8 CIRCUIT HOUSINGS.
 ● - OPTION WITH 6, 9, 12 AND 15 CIRCUIT HOUSINGS.

MFG. SH. REV. LTR. REVISIONS

DIMENSIONS SHOWN METRIC INCH
 UNLESS OTHERWISE SPECIFIED TOLERANCES: ANGULAR ± 1/2°

3 PLACE ± .010 ---
 2 PLACE ± .014 ± 0.25
 1 PLACE --- ± 0.36

DRAFT WHERE APPLICABLE MUST REMAIN WITHIN DIMENSIONS

DRWG. NO. SD-42022-***

DATE 11/15/87

MOLEX INCORPORATED
 1315 E. JILL
 GPOSS2 U.S.A.

FILE NAME SD42022X1.DWG

THIS DRAWING CONTAINS INFORMATION THAT IS PROPRIETARY TO MOLEX INC. AND SHOULD NOT BE USED WITHOUT WRITTEN PERMISSION.

42022

B

A