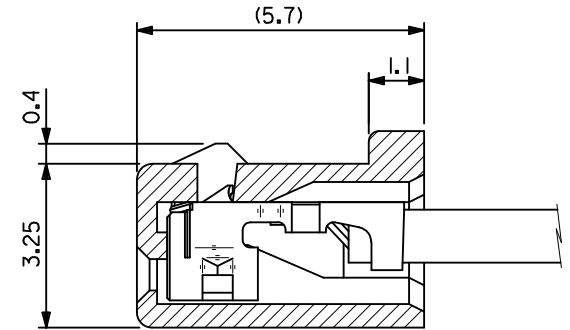
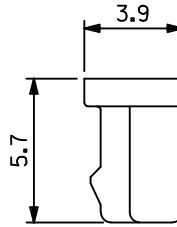
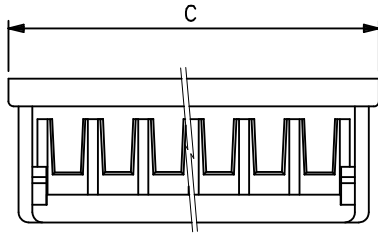
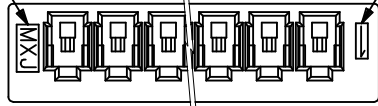
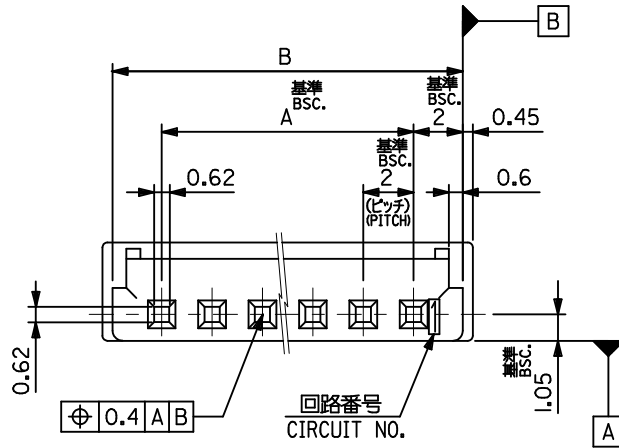


トレードマーク
TRADE MARK.

回路番号
CIRCUIT NO.



ターミナル装着状態図
FIGURE OF TERMINAL WHEN ASSEMBLED



32.9	32	28	51090-1500	15
30.9	30	26	-1400	14
28.9	28	24	-1300	13
26.9	26	22	-1200	12
24.9	24	20	-1100	11
22.9	22	18	-1000	10
20.9	20	16	-0900	9
18.9	18	14	-0800	8
16.9	16	12	-0700	7
14.9	14	10	-0600	6
12.9	12	8	-0500	5
10.9	10	6	-0400	4
8.9	8	4	-0300	3
6.9	6	2	51090-0200	2
C	B	A	ENG. NO.	極数 CKT.

注記 NOTES

- 適合ターミナル : 50212-8*00, 50372-8*00, 59354-8***
APPLICABLE TERMINAL
- 嵌合相手 : 53324-***0, 53325-***0, 53358-***0, 501708-0801
MATES WITH
- 材質 : PBT, UL94V-0
MATERIAL: PBT, UL94V-0
- ELV 及び RoHS 適合品
ELV AND RoHS COMPLIANT

REVISED EC NO: J2012-0808 2011/12/22 DRWN: NITO CHKD: KASAKAWA 2011/12/22 APPR: YOITO 2011/12/26	DESCRIPTION REV	GENERAL TOLERANCES (UNLESS SPECIFIED)		DIMENSION STYLE MM ONLY		SCALE ---	DESIGN UNITS METRIC		THIRD ANGLE PROJECTION		
		10 UNDER	±0.2	DRAWN BY NITO	DATE 2011/12/22	TITLE 2.0 W/B CONN REC HSG					
		10 OVER 30 UNDER	±0.25	CHECKED BY HHIRAMOTO	DATE 1992/09/04	MOLEX INCORPORATED					
		30 OVER	±0.3	APPROVED BY YOITO	DATE 2011/12/26						
ANGULAR ±3 °		DRAFT WHERE APPLICABLE MUST REMAIN WITHIN DIMENSIONS		MATERIAL NO. SEE CHART		DOCUMENT NO. SD-51090-001		SHEET NO. 1 OF 1			
THIS DRAWING CONTAINS INFORMATION THAT IS PROPRIETARY TO MOLEX INCORPORATED AND SHOULD NOT BE USED WITHOUT WRITTEN PERMISSION											