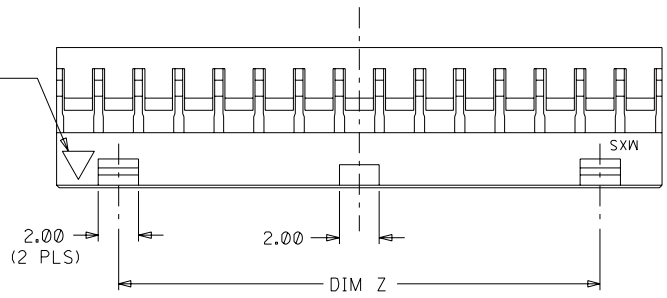


PLS REFER TO PART 51110-***60 FOR CENTER LATCH OPTION.

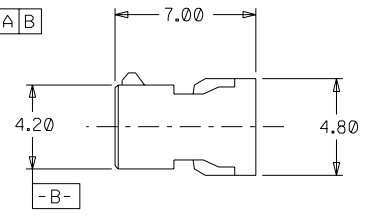
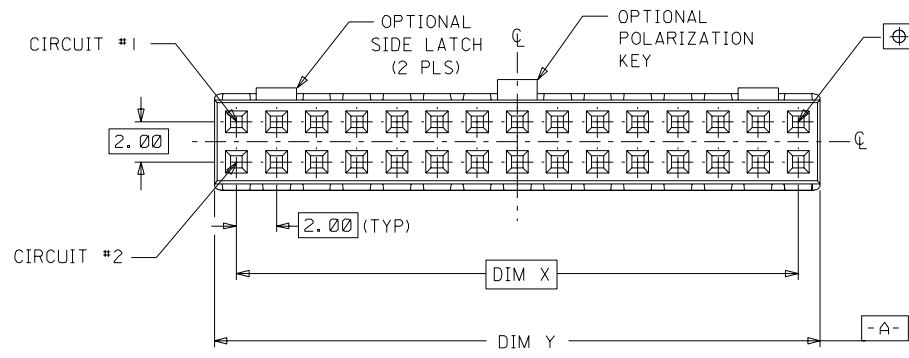
PART NO.	CKT SIZE	DIM X	DIM Y	DIM Z
51110-045*	4	2.00	4.20	NA
51110-065*	6	4.00	6.20	NA
51110-085*	8	6.00	8.20	NA
51110-105*	10	8.00	10.20	NA
51110-125*	12	10.00	12.20	NA
51110-145*	14	12.00	14.20	8.00
51110-165*	16	14.00	16.20	10.00
51110-185*	18	16.00	18.20	12.00
51110-205*	20	18.00	20.20	14.00
51110-225*	22	20.00	22.20	16.00
51110-245*	24	22.00	24.20	18.00
51110-265*	26	24.00	26.20	20.00
51110-285*	28	26.00	28.20	22.00
51110-305*	30	28.00	30.20	24.00
51110-325*	32	30.00	32.20	26.00

1ST CIRCUIT IDENTIFICATION



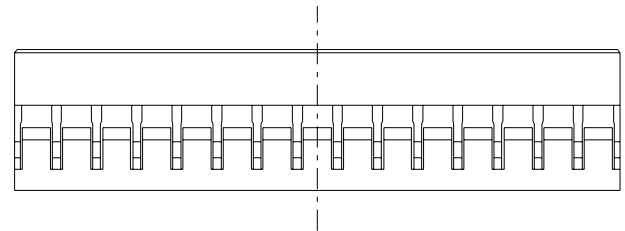
NOTES:

- MATERIAL: GLASS-FILLED POLYESTER UL RATED 94V-0 COLOR: BLACK.
- PART TO BE USED WITH CRIMP TERMINAL PART NUMBER 50394-8***.
- APPLICABLE WIRE RANGE : AWG #24 - #30.
- WIRE INSULATION RANGE : DIAMETER 1.40MM MAXIMUM.
- 30 CKT SHOWN FOR ILLUSTRATION ONLY.



PART NUMBER LEGEND:

- 51110- * * 5 *
- CIRCUIT SIZE
- Ø - WITHOUT CENTER POLARIZATION KEY AND SIDE LATCH.
 - I - WITH CENTER POLARIZATION KEY AND SIDE LATCH. (14 TO 32 CIRCUITS ONLY)
 - WITH CENTER POLAR. KEY ONLY. (8 TO 12 CIRCUITS ONLY)



EC NO. S2001-0365 DRAWN: C.R. XIE 010613 CHK: APPR:	QUALITY SYMBOLS MAJOR ▼ = 0 CRITICAL ▽ = 0	GENERAL TOLERANCES: (UNLESS SPECIFIED)		SCALE NTS	DESIGN UNITS <input checked="" type="checkbox"/> mm <input type="checkbox"/> INCH	DIMENSIONS: <input type="checkbox"/> mm <input type="checkbox"/> INCH <input checked="" type="checkbox"/> mm ONLY	SHT	REV	
		4 PLACES ±0.-- ±. 3 PLACES ±0.-- ±. 2 PLACES ±0.20 ±. 1 PLACE ±0.-- ±. ANGULAR: ± 3°	DRAWN BY & DATE S.K.TOH 931026	TITLE: 2 MM GRID, WIRE-TO-BOARD CONNECTOR, CRIMP RECEPTACLE HOUSING			MATERIAL NO. SEE NOTES	DRAWING NO. SD-51110-***5*	SHEET NO. 1 OF 1
B3	DESCRIPTION	APPROVED BY & DATE JM CHAN 931026			CAD FILENAME			THIS DRAWING CONTAINS INFORMATION THAT IS PROPRIETARY TO MOLEX INCORPORATED AND SHOULD NOT BE USED WITHOUT WRITTEN PERMISSION.	SIZE A3