

FEATURES AND SPECIFICATIONS

Features and Benefits

- Size 144 circuits
- Mounted Height: 4.0mm
- Reverse keying enables back-to-back placement of sockets for space savings
- Accepts JEDEC standard DRAM and SDRAM modules
- Plastic latch prevents scratching of module, while metal anti-overstress feature protects latch from bending too far in or out
- Front solder tabs provide secure PCB hold-down

Reference Information

Packaging: Tray (for automatic mounting packaging, contact Molex)

Designed In: Millimeters

Electrical

Voltage: 100V
 Current: 0.3A
 Contact Resistance: 60mΩ max.
 Dielectric Withstanding Voltage: 200V AC/1 min.
 Insulation Resistance: 1000 MΩ min.

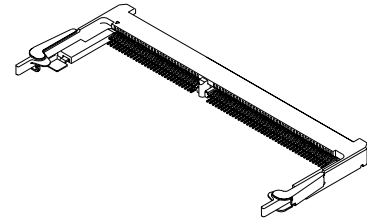
Physical

Housing: White glass-filled LCP, UL 94V-0
 Contact: Phosphor Bronze
 Plating: Gold over Nickel in contact area;
 Tin/Lead over Nickel in solder tail area
 Solder Tab and Latch Cover—Brass, Tin/Lead
 Operating Temperature: -55 to +85°C

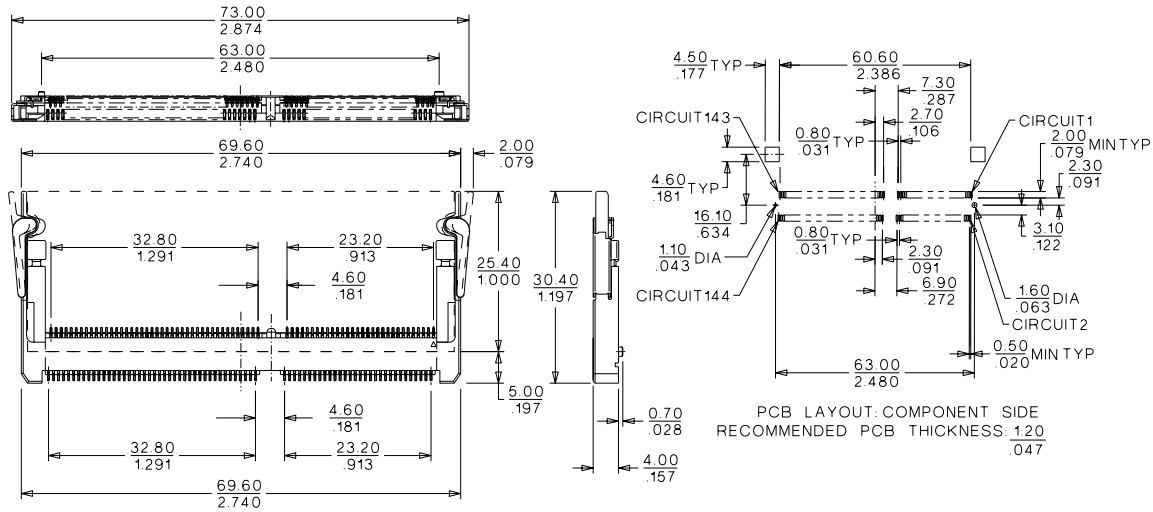
molex® 0.80mm (.031") Pitch S.O. DIMM Socket

54432

Right Angle, SMT Reverse Keying



CATALOG DRAWING (FOR REFERENCE ONLY)



ORDERING INFORMATION

Circuits	Order No.	Power Supply
144	54432-1440	3.3V
	54432-1441	5.0V