

## FEATURES AND SPECIFICATIONS

### Features and Benefits

- Sizes 2 to 25 circuits
- Used primarily for remote interconnections
- Locking crown secures positive latch to connector
- Polarization slots guide front ribs of mating connector to prevent pin damage

### Physical

Housing: Black glass-filled polyester, UL 94V-0  
 Operating Temperature: -40 to +105°C



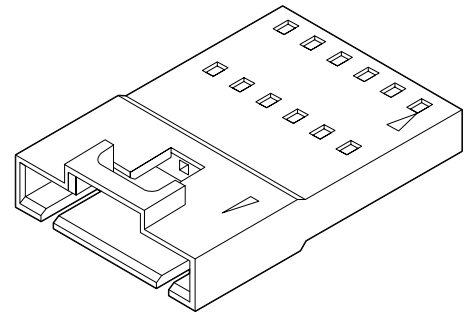
**2.54mm (.100") Pitch**

**SL™**

**Wire-to-Wire  
 Connector**

**70107**

**Single Row, Version A  
 Without Mounting Ears**



### Reference Information

Product Specification: PS-70021

Packaging: Bag

UL File No.: E29179

CSA File No.: LR19980

Mates With: 70066G, 70066N, 70400G and 70430G  
 connector assemblies

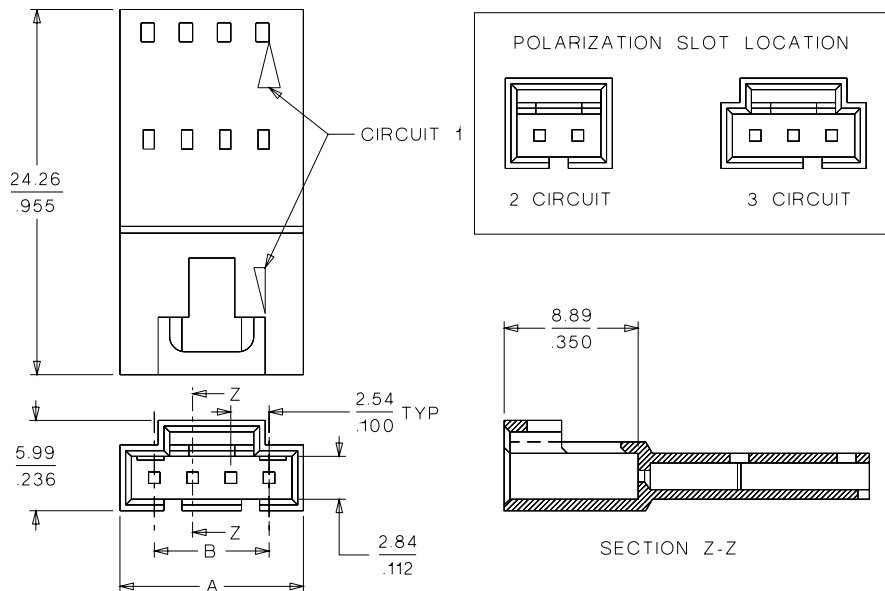
Use With: 70021 crimp terminals

Designed In: Inches

2.54mm (.100") Pitch

## CATALOG DRAWING (FOR REFERENCE ONLY)

**Not For Use With C-Grid III™ Components**



## ORDERING INFORMATION AND DIMENSIONS

Circuits	Order No.	Dimension	
		A	B
2	• 70107-0001	7.11 (.280)	2.54 (.100)
3	• 70107-0002	9.65 (.380)	5.08 (.200)
4	• 70107-0003	12.19 (.480)	7.62 (.300)
5	• 70107-0004	14.73 (.580)	10.16 (.400)
6	• 70107-0005	17.27 (.680)	12.70 (.500)
7	• 70107-0006	19.81 (.780)	15.24 (.600)
8	• 70107-0007	22.35 (.880)	17.78 (.700)
9	• 70107-0008	24.89 (.980)	20.32 (.800)
10	• 70107-0009	27.43 (1.080)	22.86 (.900)
11	• 70107-0010	29.97 (1.180)	25.40 (1.000)
12	• 70107-0011	32.51 (1.280)	27.94 (1.100)
13	• 70107-0012	35.05 (1.380)	30.48 (1.200)

Circuits	Order No.	Dimension	
		A	B
14	• 70107-0013	37.59 (1.480)	33.02 (1.300)
15	• 70107-0014	40.13 (1.580)	33.56 (1.400)
16	• 70107-0015	42.67 (1.680)	38.10 (1.500)
17	• 70107-0016	45.21 (1.780)	40.64 (1.600)
18	• 70107-0017	47.75 (1.880)	43.18 (1.700)
19	• 70107-0018	50.29 (1.980)	45.72 (1.800)
20	• 70107-0019	52.83 (2.080)	48.26 (1.900)
21	• 70107-0020	55.37 (2.180)	50.80 (2.000)
22	• 70107-0021	57.91 (2.280)	53.34 (2.100)
23	• 70107-0022	60.45 (2.380)	55.88 (2.200)
24	• 70107-0023	62.99 (2.480)	58.42 (2.300)
25	• 70107-0024	65.53 (2.580)	60.96 (2.400)

• US Standard Product, available through Molex franchised distributors