

DWG. NO. SD-71251-5101

E

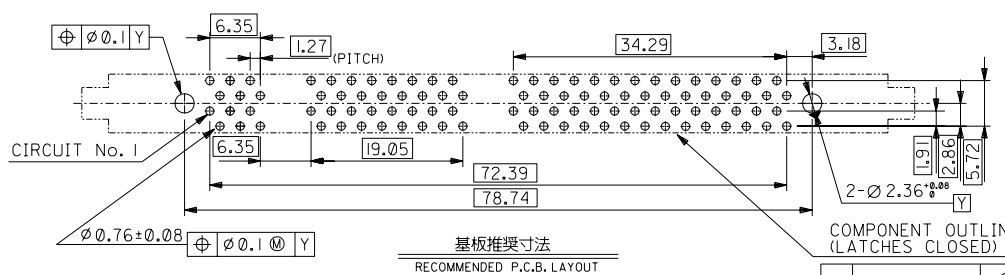
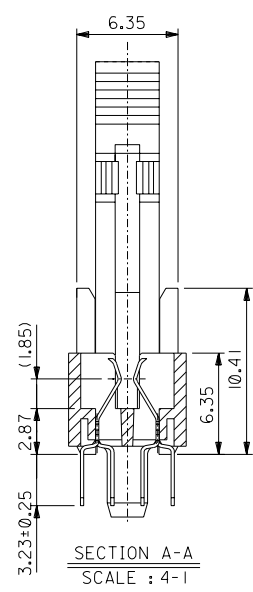
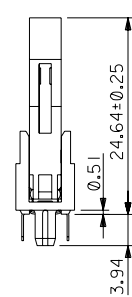
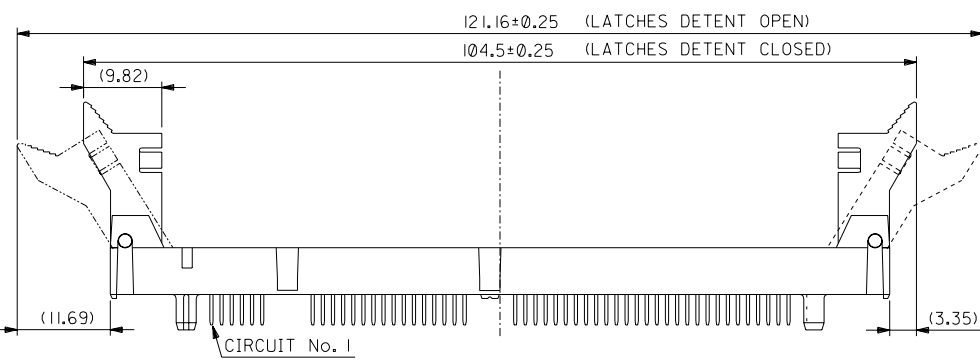
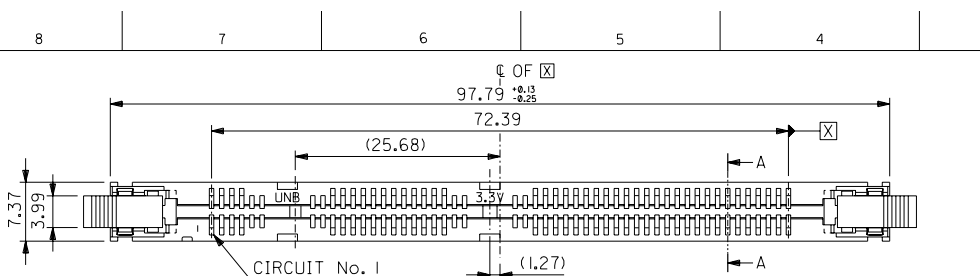
D

C

B

A

MM DIMENSIONS IN METRIC DO NOT SCALE DRAWING



基板推奨寸法  
RECOMMENDED P.C.B. LAYOUT

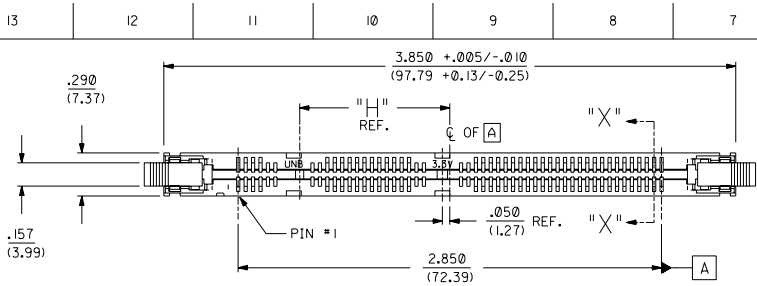
COMPONENT OUTLINE  
(LATCHES CLOSED)

角度 ANGLE	±3°									材料 MATERIAL	
30°以上 OVER	±0.3									注参照 SEE NOTES	
10°以上 未過 UNDER	±0.25	A	変更 REVISED	IJ2004-4509	Y.S.	M.S.	04/05/11			仕上げ注参照 FINISH SEE NOTES	
10°未過 UNDER	±0.2	0	新規作成 PROPOSED	IJ090709	Y.S.	M.S.	08/11/12			適用電線範囲 WIRE RANGE	
一般公差 GENERAL TOLERANCES			記号 LTR	変更内容 REVISION RECORD	DR.	CHK.	DATE			適用電線範囲 INS. RANGE	
										被覆外径 INS. RANGE	
										DRAWN BY	
										CHK'D BY	
										尺度 SCALE	
										2 - 1	

MOLEX-JAPAN CO.,LTD. 日本モレックス株式会社	
REVISE ONLY ON CAD SYSTEM	
TITLE 名称	
1.27 PITCH DIMM	
100 CIRCUIT MULTI-KEY	
HOUSING ASS'Y	
-LEAD FREE-	
DWG. NO.	SHEET 1 OF 2 REV
SD-71251-5101	A

THIS DRAWING CONTAINS INFORMATION THAT IS PROPRIETARY TO MOLEX/JAPAN AND SHOULD NOT BE USED WITHOUT WRITTEN PERMISSION  
本図面は日本モレックス(株)の所有する情報を含むもので、当社の許可なく複製を禁止する。 EN-01C(032)MXJ-32

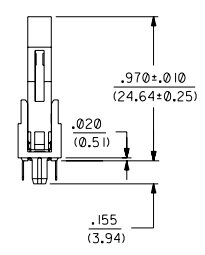
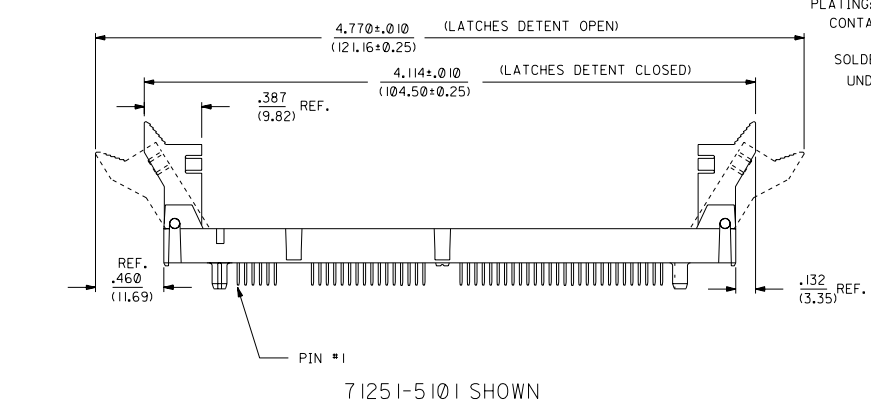




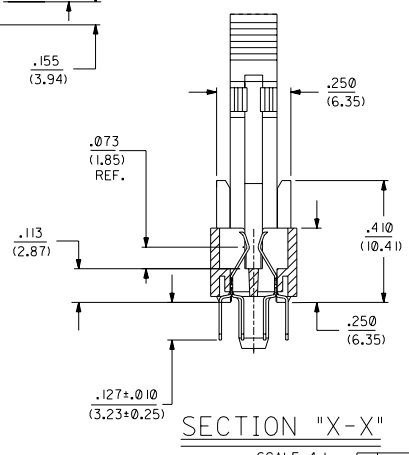
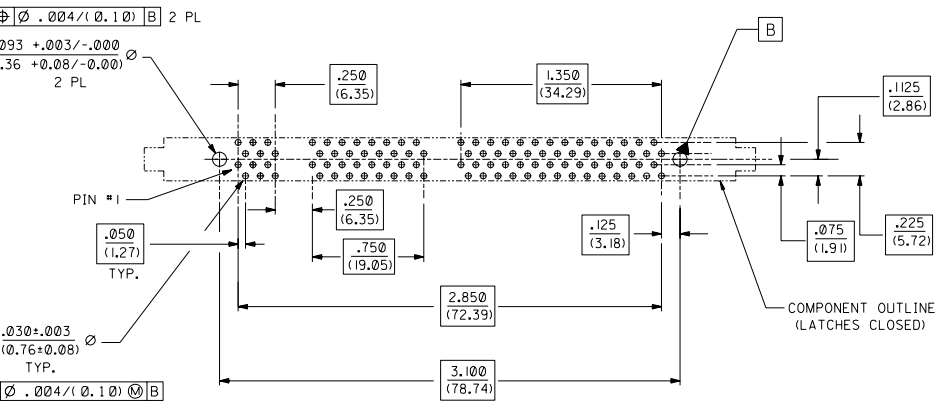
- NOTES:
- CARD SLOT ACCEPTS .050±.004 (1.27±.10) MODULE THICKNESS. (MEASURED OVER P.C. PADS).
  - ALL PEGS ARE INTERFERENCE FITS TO PCB UNLESS NOTED ON THE DWG.
  - REFER TO PRODUCT SPEC. PS-71243 FOR PERFORMANCE SPECIFICATIONS.
  - PRODUCT IS PACKAGED IN TRAYS.
  - RECOMMENDED MODULE LAYOUT SHALL BE PER MO-161.
  - RECOMMENDED PLATING ON MODULE PADS: 30 MICROINCH/(0.76 MICROMETER) MINIMUM HARD GOLD (Au) OVER 79 MICROINCH/(2.0 MICROMETER) MINIMUM NICKEL (Ni).
  - PRODUCT WILL HAVE DATE CODE STAMPED ON SIDE OF HOUSING.

MATERIALS:  
 HOUSING - GLASS FILLED LIQUID CRYSTAL POLYMER (LCP), UL 94V-0, COLOR: BLACK.  
 TERMINAL - PHOSPHOR BRONZE  
 LATCHES - GLASS FILLED HIGH TEMPERATURE NYLON, UL 94V-0, COLOR: IVORY.

PLATING:  
 CONTACT AREA: MOLEX EBI LUBRICANT OVER GOLD (Au); THICKNESS=10 MICROINCH/(0.25 MICROMETER) MINIMUM.  
 SOLDER TAILS: TIN (Sn); THICKNESS=150 MICROINCH/(3.81 MICROMETER) MINIMUM.  
 UNDERPLATE: NICKEL (Ni) OVER ENTIRE CONTACT.



NOTE FOR LEAD FREE CONVERSION:  
 THE PRIMARY SHIPPING CARTON WILL BE LABELED \*COMPLIANT TO ROHS DIRECTIVE 2002/95/EC AND ELV ANNEX II OF DIRECTIVE 2000/53/EC\*. CARTONS WITHOUT THIS LABEL MAY CONTAIN PRODUCT WITH LEAD.



SECTION "X-X"  
 SCALE 4:1

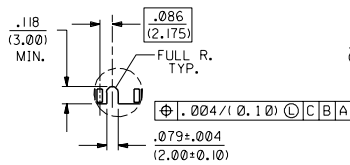
RECOMMENDED P.C. BOARD HOLE PATTERN (CONNECTOR SIDE)

DIMENSIONS SHOWN (METRIC) INCH		REVISE ONLY ON CAD SYSTEM	
SALES OTHERWISE SPECIFIED TOLERANCES ANGULAR ± 0.2°		TITLE	
3 PLACE ± .005	---	.050 PITCH DIMM	
2 PLACE ± ---	± 0.13	100 CKT MULTI-KEY	
1 PLACE ---	± 0.25	SALES DRAWING	
DRAFT WHERE APPLICABLE MUST REMAIN WITHIN DIMENSIONS		MOLEX INCORPORATED SHEET NO. DATE	
PART NO. 69532		U.S.A. 1 OF 2 03/26/96	
DRG. BY: JCL	CHK'D. BY: DCB	SEE CHART SDA-71251-5***	
APP'D. DCB	SCALE 2:1	NO DIMENSIONS CONTAINING INFORMATION THAT IS PROPRIETARY TO MOLEX INC. AND SHOULD NOT BE USED WITHOUT WRITTEN PERMISSION. CP C	

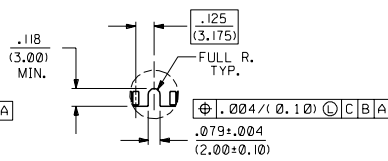
C1	ADD LEAD FREE NOTE ECN# UCP2004-1732 DMORGAN 04/03/09
C	CHANGE PLATING ECN# J072002-0772 DMORGAN 02/01/22
B	CHG Sn-Pb THICKNESS ECN# 101 993-0454 DMORGAN 09/08/09
A1	REVISED PER ECR# U80435 97-8-8 LAURX
A	REVISED PER ECR# U70092 96-7-23 LAURX
2	REVISED PER ECR# U61257 4-10-96 JCL
1	X-RELEASE PER ECR# U61175 3-26-96 JCL
MFG. SH.	REV. LTR.
2	A1
1	C1

PART NUMBER	DESCRIPTION	FUNCTION KEY	VOLTAGE KEY	DIM. "H"
71251-5101	3.3 VOLT UNBUFFERED	OFFSET RIGHT	CENTER	1.011 (25.68)
71251-5102	5.0 VOLT UNBUFFERED	OFFSET RIGHT	OFFSET LEFT	1.011 (25.68)

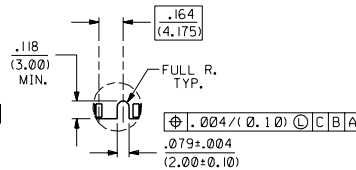
- NOTES:
- STRAIGHTNESS OF MODULE APPLIES TO THE AREA FROM THE BOTTOM OF THE CARD UP .157/(4.00).
  - IF TIE BARS ARE ATTACHED TO PADS, THE TIE BAR SHOULD BE ON AN INTERNAL LAYER, SO THAT THE REMNANT CANNOT CAUSE DAMAGE TO THE CONTACTS.



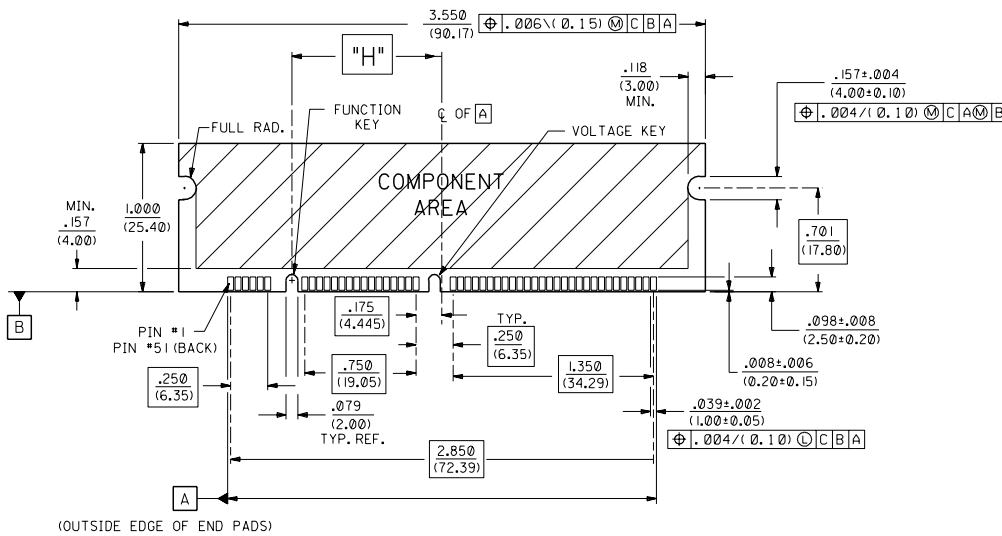
OFFSET LEFT KEY



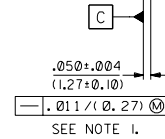
CENTERED KEY



OFFSET RIGHT KEY



RECOMMENDED MODULE LAYOUT  
100 CKT 3.3V UNBUFFERED



REV.	DESCRIPTION
A1	SEE SHEET 1
A	SEE SHEET 1
2	SEE SHEET 1
1	SEE SHEET 1

DIMENSIONS SHOWN (METRIC) (INCH)		REVISE ONLY ON CAD SYSTEM	
UNLESS OTHERWISE SPECIFIED	TOLERANCES ANGULAR 1/2°	MFG. SH.	REV. LTR.
2 PLACE ± .005	---		
1 PLACE ± .01	± 0.13		
1 PLACE ---	± 0.25		
DRAFT WHERE APPLICABLE MUST REMAIN WITHIN DIMENSIONS		DATE 03/26/96	
DRAWN BY JCL		PART NO. SDA-71251-5	
CHK'D BY DCB		DRAWN BY SDA-71251-5	
APP'D BY DCB		SCALE 2:1	
FILE NAME 57125152		THIS DRAWING CONTAINS INFORMATION THAT IS PROPRIETARY TO MOLEX INC. AND SHOULD NOT BE USED WITHOUT WRITTEN PERMISSION. CP	