

NOTES:

- 1) MATERIALS:
HOUSING- LIQUID CRYSTAL POLYMER (LCP), GLASS FILLED, UL 94V-0, BLACK.
TERMINALS- COPPER ALLOY
ESD METAL PEGS- COPPER ALLOY.
- 2) PLATING OPTION 1:
TERMINALS:
.000030/(0.00076) MIN. GOLD IN CONTACT AREA AND .000100/(0.00254) MIN. TIN-LEAD IN TAIL AREA OVER NICKEL OVERALL.
ESD METAL PEGS:
.000150/(0.00381) MIN. TIN-LEAD OVER NICKEL OVERALL.
- 3) PLATING OPTION 2:
TERMINALS:
GOLD FLASH IN SELECT CONTACT AREA OVER .000030/(0.00076) MIN. PALLADIUM NICKEL IN CONTACT AREA AND .000075/(0.00191) MIN. TIN-LEAD IN TAIL AREA OVER NICKEL OVERALL.
ESD METAL PEGS:
.000150/(0.00381) MIN. TIN-LEAD OVER NICKEL OVERALL.
- 4) CONFORMS TO PRODUCT SPECIFICATION PS-73826-0000.
- 5) CIRCUIT NUMBERS 21 THRU 23, 26, 29, 32, 35 THRU 40, ARE ADVANCED (LONG) TERMINALS FOR SEQUENTIAL MATING.
- 6) CONNECTOR WILL ACCEPT MATING TO A P.C. BOARD WITH A THICKNESS OF .062±.003 (1.60±0.08).
- 7) SEE TABLE FOR RECOMMENDED P.C. BOARD THICKNESS.
- 8) PRODUCT PACKAGED PER PK-70873-083*
- 9) FOUR DIGIT DATE CODE (WK, YR), EXAMPLE => 26 96 LOCATED IN AREA INDICATED.

I	REVISOR	ECN UCP2003-0093
	BY	BBARKER 02/08/13
H	REVISOR	ECN UDT 2000-1231
	BY	ACHAMMER 00/06/07
G	REVISOR	ECN UDT1999-0975
	BY	KSMITH 99/05/26
F2	REVISOR	ECN UDT 1999-0865
	BY	ACHAMMER 99-04-10
F1	REVISOR	ECN UDT1998-0294
	BY	STANISLA 98/6/10
F	REVISOR	PER ECN U80654
	BY	ACHAMMER 97-9-18
E	REVISOR	PER ECN U71495
	BY	ACHAMMER 97-6-2
DI	REVISOR	PER ECN U70444
	BY	ACHAMMER 96-11-26
D	REVISOR	PER ECN U61278
	BY	5-2-96 DCA
C	REVISOR	PER ECN U60641
	BY	11-29-95 DRS
B	REVISOR	PER ECN U60297
	BY	9-1-95 RAN
A	INITIAL RELEASE	PER ECN U60019
	BY	8-15-95 RAN

71743-1045	SEE NOTE 2	.130±.006 (3.30±0.15)	.148 (3.75)	.118 (3.00)
71743-1044	SEE NOTE 2	.125±.003 (3.18±0.08)	.134 (3.40)	.118 (3.00)
71743-1043	SEE NOTE 2	.093±.003 (2.36±0.08)	.125 (3.18)	.118 (3.00)
71743-1042	OBSOLETE			
71743-1041	SEE NOTE 2	.062±.003 (1.60±0.08)	.110 (2.79)	.118 (3.00)
71743-1040	SEE NOTE 2	.093±.003 (2.36±0.08)	.125 (3.18)	.118 (3.00)
PART NUMBER	PLATING	PCB THICKNESS	DIM. P	DIM. A

SALES ASSEMBLY
EBBI VERTICAL RECEPTACLE
40 CKT FIBRE CHANNEL CONN

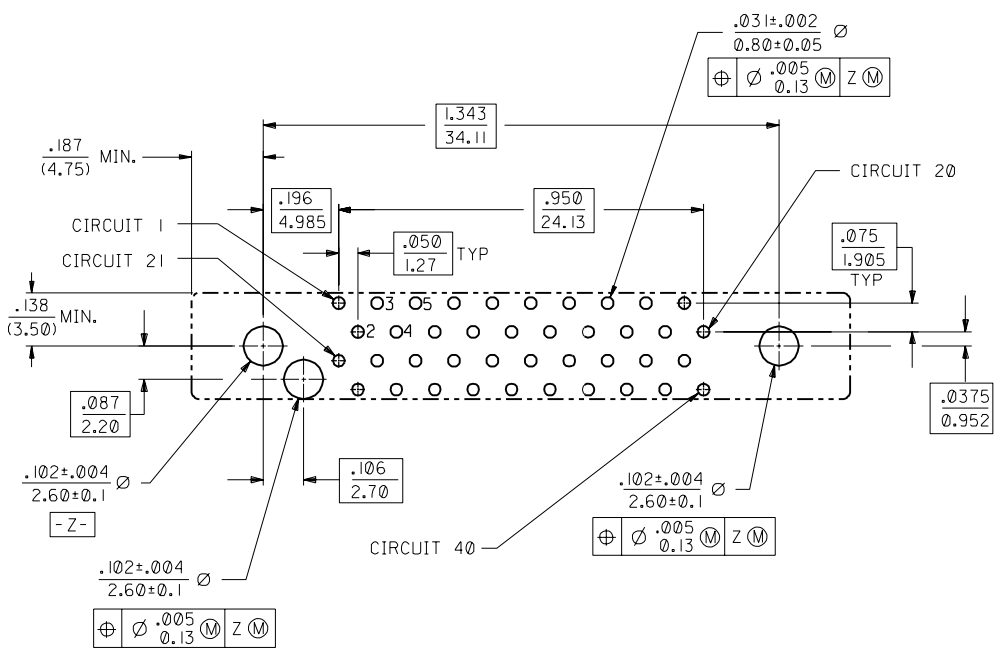
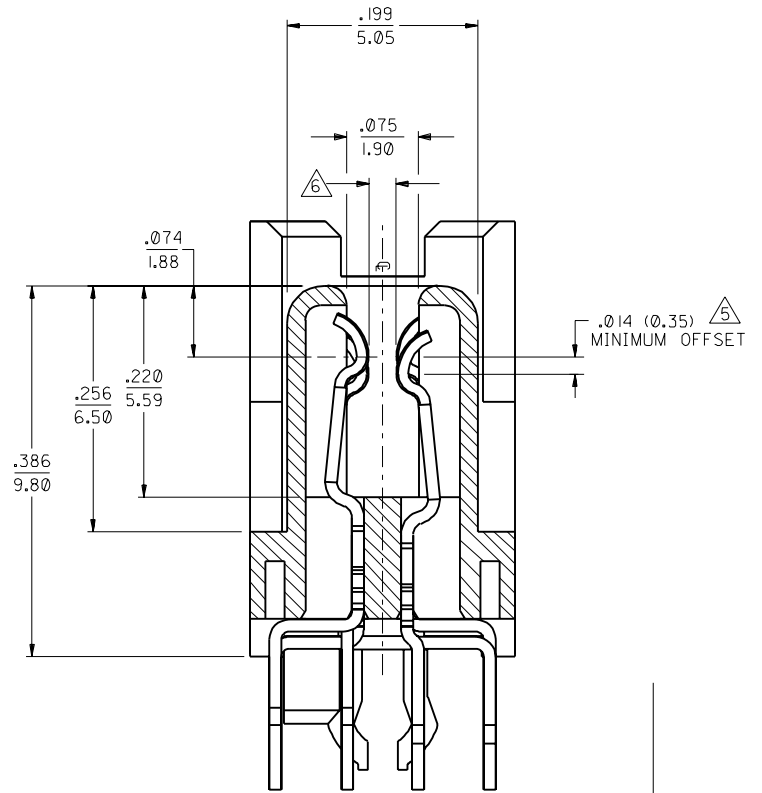
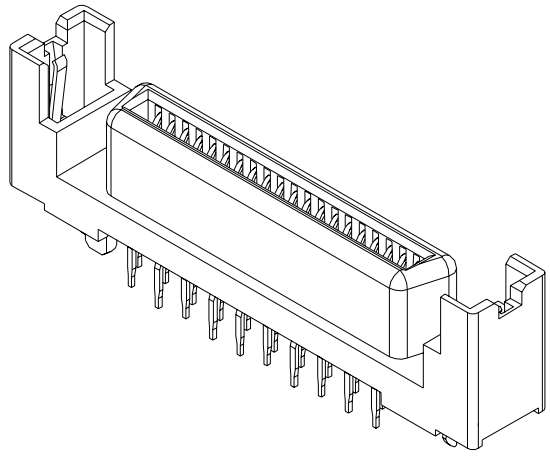
MOLEX INCORPORATED
LITSE, ILL. 60532

SEE TABLE SDA-71743-104*

DRWG. NO. 571743K4
BY GWF

DATE 7/21/95

THIS DRAWING CONTAINS INFORMATION THAT IS PROPRIETARY TO MOLEX INC. AND SHOULD NOT BE USED WITHOUT WRITTEN PERMISSION.



RECOMMENDED PC BOARD LAYOUT COMPONENT SIDE

DIMENSIONS SHOWN (METRIC) INCH		UNLESS OTHERWISE SPECIFIED TOLERANCES ANGULAR ± 1/2°		REVISIONS	
INCH		METRIC		MFG. SH. REV. LTR.	
3 PLACE ± .005	---	---	---	REVISE ONLY ON CAD SYSTEM	
2 PLACE ± .01	± 0.13			TITLE	
1 PLACE ---	± 0.25			SALES ASSEMBLY	
DRAFT WHERE APPLICABLE MUST REMAIN WITHIN DIMENSIONS		PART NO.		DATE	
		SDA-71743-104		7/21/95	
DRWG. BY RAN		CHK'D BY RAN		SHEET NO. 2	
APP'D BY GWF		SCALE 4:1		U.S.A.	
		FILE NAME S71743X4		MOLEX INC. AND SHOULD NOT BE USED WITHOUT WRITTEN PERMISSION	
		SIZE C		C	

SEE SHEET 1

SALES ASSEMBLY
EBBI VERTICAL RECPETACLE
40 CKT FIBRE CHANNEL CONN

MOLEX INCORPORATED
L15LEJLL 69532 U.S.A.

SEE TABLE SDA-71743-104

71743