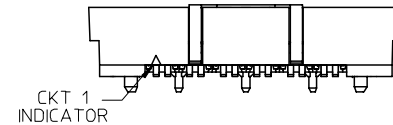
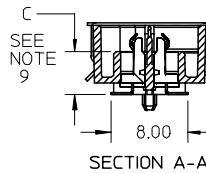
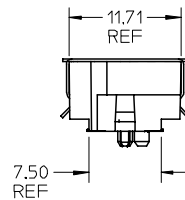
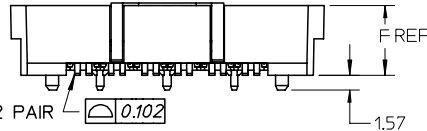
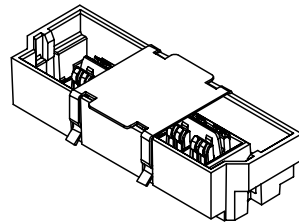
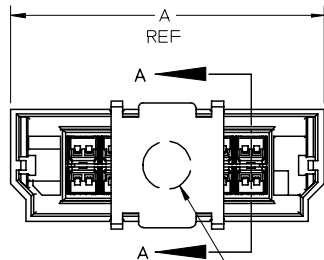
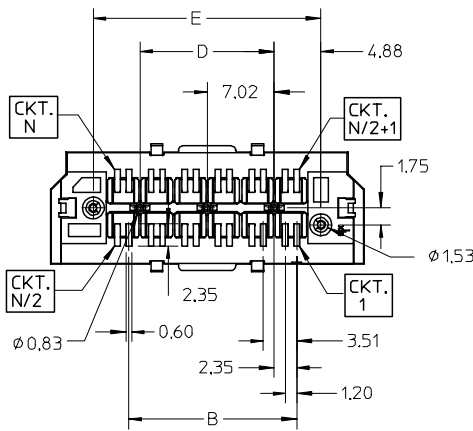


NOTES:

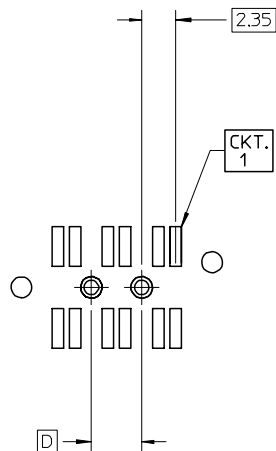
- 1) MATERIALS:
HOUSING - LIQUID CRYSTAL POLYMER, UL94 V-0, NATURAL
CHICKLET - LIQUID CRYSTAL POLYMER, UL94 V-0, BLACK
CONTACT - TIN BRASS
- 2) CONTACT PLATING FINISH:
0.76 MICRON MIN. SELECT GOLD AND
3.81 MICRON MIN. SELECT PURE TIN OVER
1.27 MICRON MIN. NICKEL OVERALL
- 3) HOUSING PLATING FINISH:
0.10 MICRON MAX IMMERSION GOLD OVER
3.81 MICRON MIN. NICKEL OVER
3.81 MICRON MIN. COPPER
- 4) 4.5mm 12 PAIR ASSEMBLY SHOWN.
- 5) PART CONFORMS TO MOLEX COSMETIC SPECIFICATION PS-75005-002.
- 6) PART PERFORMS TO MOLEX PRODUCT SPECIFICATION PS-75005-001.
- 7) PACKAGE PER PK-75005-001.
- 8) FOR AUTO-PLACEMENT APPLICATIONS: PCB ORIENTATION HOLE TO BE $\phi 1.65 \pm 0.05$
FOR HAND PLACEMENT APPLICATIONS: PCB ORIENTATION HOLE TO BE $\phi 1.45 \pm 0.05$
- 9) THIS DIMENSION CONTROLS THE STACK HEIGHT OF THE MATED CONNECTORS.
- 10) PLEASE REFER TO MOLEX APPLICATION SPECIFICATION AS-75005-001 FOR SUITABLE PROCESSING TEMPERATURES, PERMISSABLE OFFSETS, AND MATING SEQUENCES.
- 11) THESE PLATED THRU HOLES SHOULD BE CONNECTED TO SIGNAL GROUND.
- 12) THIS PART MATES WITH THE 75003 PLUG.
- 13) THIS PART IS RECOMMENDED TO BE PLACED ON THE PLANAR OR HOST PCB.
- 14) HOUSING IS CONDUCTIVE. UNINSULATED TRACES MUST BE KEPT OUT OF KEEP-OUT ZONE.
- 15) EACH SIDE IS MEASURED TO A COMMON DATUM WITH-IN A COPLANARITY OF 0.102mm FOR 6 AND 12 PAIR, 0.114mm FOR 24 PAIR AND 0.127mm FOR 36 PAIR. THE SIDES MAY VARY TO EACH OTHER BY 0.05mm MAX.



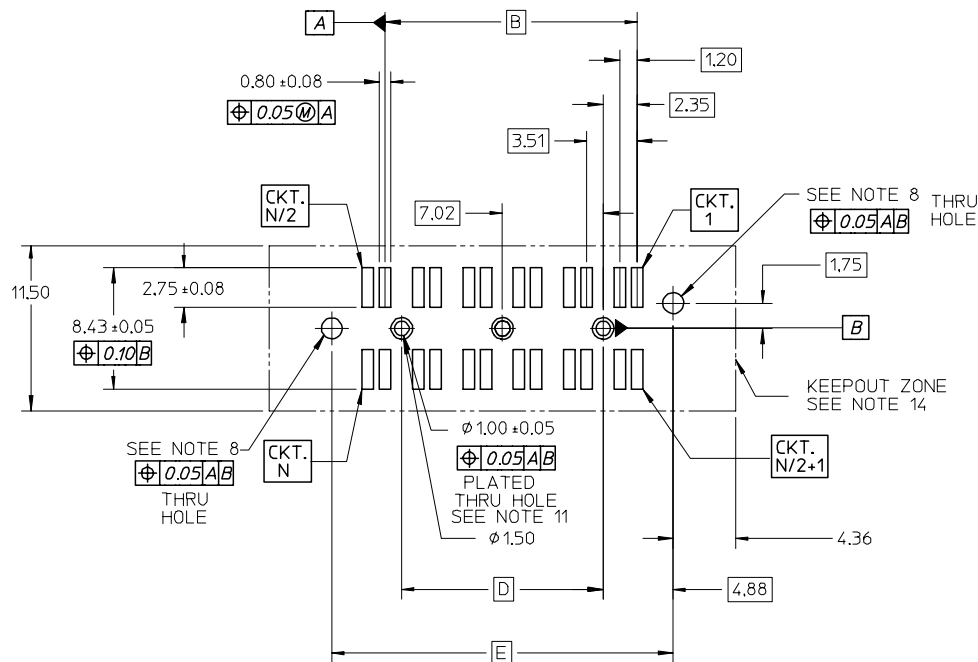
FOR 6 AND 12 PAIR $\Delta 0.102$
 FOR 24 PAIR $\Delta 0.114$
 FOR 36 PAIR $\Delta 0.127$
 N SURFACES
 N = # OF CIRCUITS
 (SEE NOTE 15)



EC NO: UCP2005-2353 TDRWN:MSIBARRA 2005/05/05 CHKD:BBARKER 2005/05/13 APPR:SMILLER 2005/05/24	QUALITY SYMBOLS ▽ = 0 ▽ = 0	GENERAL TOLERANCES (UNLESS SPECIFIED)		SCALE 2:1	DESIGN UNITS METRIC	THIRD ANGLE PROJECTION	REVISE ON CAD ONLY
		mm	INCH	DIMENSION STYLE MM ONLY		TITLE SALES DRAWING FOR HIGH SPEED MEZZANINE RECEPTACLE	
DESCRIPTION	4 PLACES	± ---	± ---	DRAWN BY KSTILES	DATE 10/24/2001	MOLEX INCORPORATED	
	3 PLACES	± ---	± ---	CHECKED BY KREGNIER	DATE 10/25/2001	MATERIAL NO. SEE CHART	DOCUMENT NO. SD-75005-001
REV	2 PLACES	± 0.13	± ---	APPROVED BY MBANAKIS	DATE 2001/12/13	SHEET NO. 1 OF 3	
	1 PLACE	± 0.25	± ---	THIS DRAWING CONTAINS INFORMATION THAT IS PROPRIETARY TO MOLEX INCORPORATED AND SHOULD NOT BE USED WITHOUT WRITTEN PERMISSION			
	ANGULAR ± 1/2°		DRAFT WHERE APPLICABLE		MUST REMAIN WITHIN DIMENSIONS		



COMPONENT SIDE SHOWN
 RECOMMENDED PCB THICKNESS: 1.57mm
 FOR 12 CIRCUIT OPTION
 FOR DIMENSIONS NOT SHOWN REFER TO
 THE 24-72 CIRCUIT PCB LAYOUT.



COMPONENT SIDE SHOWN
 RECOMMENDED PCB THICKNESS: 1.57mm
 FOR CIRCUIT SIZES FROM 24-72 CIRCUITS.

EC NO: UCP2005-2353 TDRWN:MSIBARRA 2005/05/05 CHKD:BBARKER 2005/05/13 APPR:SMILLER 2005/05/24	QUALITY SYMBOLS ▽ = 0 ▽ = 0	GENERAL TOLERANCES (UNLESS SPECIFIED)		SCALE 3:1	DESIGN UNITS METRIC	THIRD ANGLE PROJECTION	REVISE ON CAD ONLY
		4 PLACES ± --- ± --- 3 PLACES ± --- ± --- 2 PLACES ± 0.13 ± --- 1 PLACE ± 0.25 ± ---	DIMENSION STYLE MM ONLY	TITLE SALES DRAWING FOR HIGH SPEED MEZZANINE RECEPTACLE			
		ANGULAR ± 1/2°	DRAWN BY DATE KSTILES 10/24/2001	MOLEX INCORPORATED			
		DRAFT WHERE APPLICABLE MUST REMAIN WITHIN DIMENSIONS	CHECKED BY DATE KREGNIER 10/25/2001	MATERIAL NO. SEE CHART	DOCUMENT NO. SD-75005-001	SHEET NO. 2 OF 3	

THIS DRAWING CONTAINS INFORMATION THAT IS PROPRIETARY TO MOLEX INCORPORATED AND SHOULD NOT BE USED WITHOUT WRITTEN PERMISSION

NUMBER OF CIRCUITS	NUMBER OF DIFFERENTIAL PAIRS	MATERIAL NUMBER	A	B	C	D	E	F
12	6	750050304	22.23	7.02	4.50	3.52	13.27	7.25
12	6	750050306	22.30	7.02	6.50	3.52	13.27	9.25
12	6	NOT TOOLED	22.51	7.02	12.50	3.52	13.27	15.25
24	12	750050004	32.76	17.55	4.50	14.05	23.80	7.25
24	12	750050006	32.83	17.55	6.50	14.05	23.80	9.25
24	12	NOT TOOLED	33.04	17.55	12.50	14.05	23.80	15.25
48	24	750050104	53.82	38.61	4.50	35.11	44.86	7.25
48	24	NOT TOOLED	54.10	38.61	12.50	35.11	44.86	15.25
72	36	750050204	74.88	59.67	4.50	56.17	65.92	7.25
72	36	NOT TOOLED	75.16	59.67	12.50	56.17	65.92	15.25
72	36	750050214	75.16	59.67	14.50	56.17	65.92	17.25

EC NO: UCP2005-2353 DRWN: MSIBARRA 2005/05/05 CHKD: BBARKER 2005/05/13 APPR: SMILLER 2005/05/24	QUALITY SYMBOLS ▽ = 0 ▽ = 0	GENERAL TOLERANCES (UNLESS SPECIFIED)		SCALE 3:1	DESIGN UNITS METRIC	THIRD ANGLE PROJECTION	REVISE ON CAD ONLY	
				DIMENSION STYLE MM ONLY		TITLE SALES DRAWING FOR HIGH SPEED MEZZANINE RECEPTACLE		
				DRAWN BY DATE KSTILES 10/24/2001		CHECKED BY DATE KREGNIER 10/25/2001		
				APPROVED BY DATE MBANAKIS 2001/12/13		MATERIAL NO. SEE CHART	DOCUMENT NO. SD-75005-001	SHEET NO. 3 OF 3
		DRAFT WHERE APPLICABLE MUST REMAIN WITHIN DIMENSIONS		THIS DRAWING CONTAINS INFORMATION THAT IS PROPRIETARY TO MOLEX INCORPORATED AND SHOULD NOT BE USED WITHOUT WRITTEN PERMISSION				