

PLEASE CHECK WWW.MOLEX.COM FOR LATEST PART INFORMATION

Part Number: [76015-1403](#)
Status: **Active**
Overview: GbX I-Trac™ Backplane Connector System
Description: GbX I-Trac™ Vertical Header Module, 1.85mm by 3.70mm Pitch, Unguided, Open Ends, 7 Rows, 4 Columns, 56 Circuits, Mating Pin Length 4.70mm

Documents:

[3D Model](#) [Product Specification PS-75710-999 \(PDF\)](#)
[Drawing \(PDF\)](#) [RoHS Certificate of Compliance \(PDF\)](#)

Agency Certification

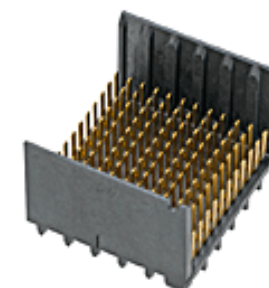
UL E29179

General

Product Family Backplane Connectors
 Series [76015](#)
 Application Backplane, Midplane, Orthogonal
 Component Type PCB Header
 Overview [GbX I-Trac™ Backplane Connector System](#)
 Product Name GbX I-Trac™
 Style N/A
 UPC 822350856416

Physical

Circuits (Loaded) 56
 Circuits (maximum) 56
 Color - Resin Black
 Durability (mating cycles max) 200
 First Mate / Last Break No
 Flammability 94V-0
 Guide to Mating Part No
 Keying to Mating Part None
 Material - Metal High Performance Alloy (HPA)
 Material - Plating Mating Gold
 Material - Plating Termination Tin
 Material - Resin High Temperature Thermoplastic
 Net Weight 1.934/g
 Number of Columns 4
 Number of Pairs 4, Open Pin Field
 Number of Rows 7
 Orientation Vertical
 PC Tail Length 2.10mm
 PCB Locator No
 PCB Retention None
 PCB Thickness - Recommended 1.60mm
 Packaging Type Tray
 Pitch - Mating Interface 1.85mm, 3.70mm
 Pitch - Termination Interface 1.00mm, 2.70mm
 Plating min - Mating 0.762µm
 Plating min - Termination 0.762µm
 Polarized to PCB No
 Stackable Yes
 Surface Mount Compatible (SMC) Yes
 Temperature Range - Operating 85°C
 Termination Interface: Style Through Hole - Compliant Pin



Series

image - Reference only

EU RoHS

**ELV and RoHS
Compliant**

REACH SVHC

**Contains SVHC: No
Low-Halogen Status
Low-Halogen**

China RoHS



**Need more information on product
environmental compliance?**

Email productcompliance@molex.com
 For a multiple part number RoHS Certificate of Compliance, [click here](#)

Please visit the [Contact Us](#) section for any non-product compliance questions.

Search Parts in this Series

[76015Series](#)

Mates With

[76020](#) GbX I-Trac™ Right Angle Receptacle Module

Use With

[78227](#) GbX I-Trac™ Vertical Power Receptacle. [75234](#) Backplane Free Standing Guide Pin

Application Tooling | FAQ

Tooling specifications and manuals are found by selecting the products below. Crimp Height Specifications are then contained in the Application Tooling Specification document.

Global

Description	Product #
Backplane Insertion	0621005110
Tool for Signal Contact Insertion	

Electrical

Current - Maximum per Contact	1A
Data Rate	12.0 Gbps
Shield Type	N/A
Shielded	No
Voltage - Maximum	120V AC (RMS)/DC

Material Info**Reference - Drawing Numbers**

Product Specification	PS-75710-999
Sales Drawing	SD-76015-001

Press-In Tool for	<u>0622018607</u>
Vertical Header 7- Row, 4-Column	

This document was generated on 10/09/2013

PLEASE CHECK WWW.MOLEX.COM FOR LATEST PART INFORMATION