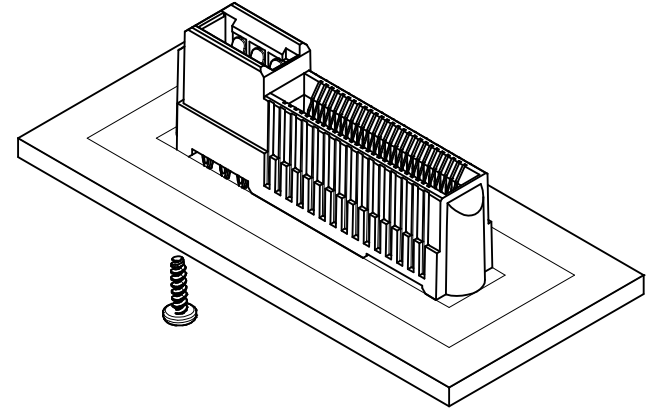
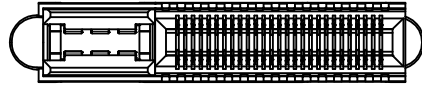
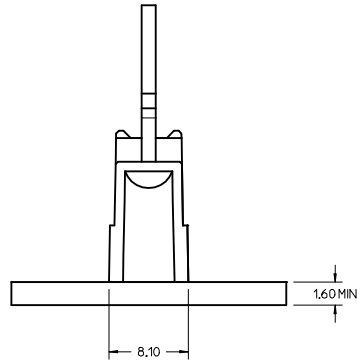
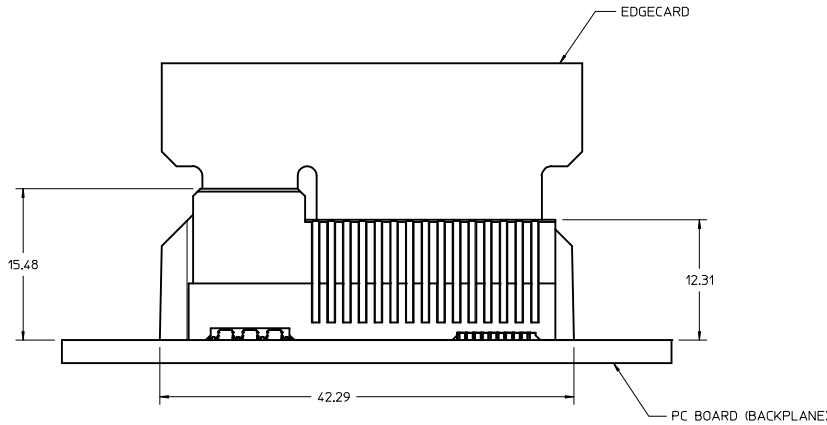


# P.C. BOARD MOUNTING



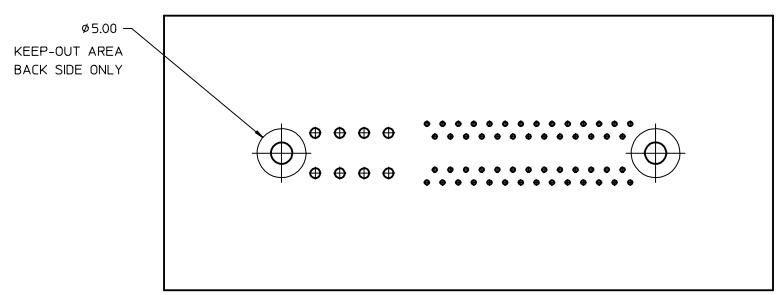
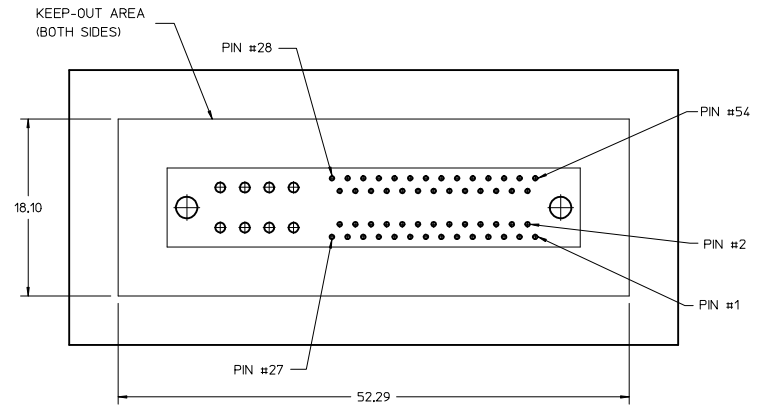
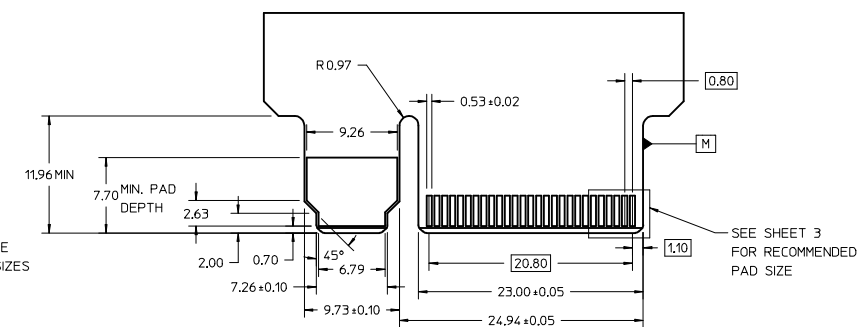
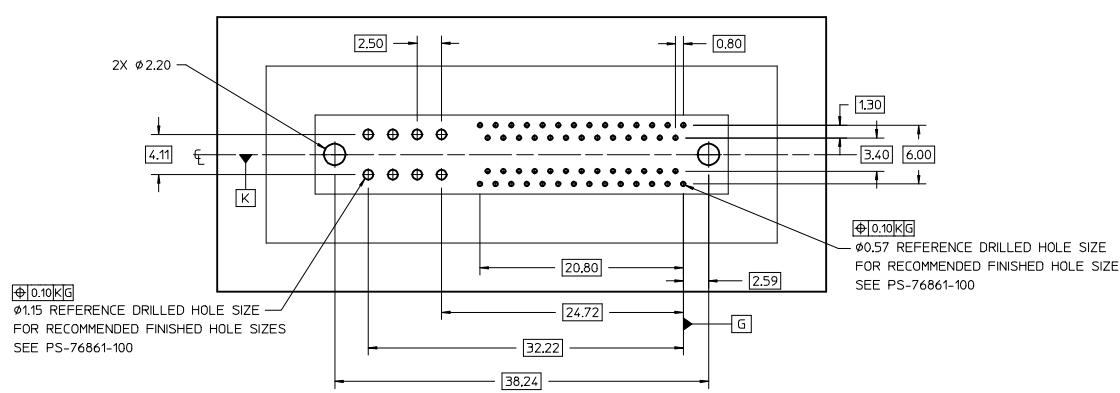
M1.8x8  
THREAD-FORMING SCREW  
(NOT SUPPLIED BY MOLEX)



**NOTES:**

1. MATERIAL:  
HOUSING - GLASS FILLED THERMOPLASTIC, 94-V0, BLACK  
TERMINALS - COPPER ALLOY
2. FINISH:  
CONTACT AREA: HARD GOLD -0.76 MICROMETERS MINIMUM OVER 3.80 MICRO METER NICKEL  
COMPLIANT AREA: TIN - 0.76/1.52 MICROMETERS OVER NICKEL
3. REFER TO PS-76861-100 PRODUCT SPECIFICATION FOR ALL ELECTRICAL, MECHANICAL AND ENVIRONMENTAL SPECIFICATIONS.
4. REFER TO PK-170545-5000 FOR ALL PACKAGING SPECIFICATIONS.
5. REFER TO AS-76693-100 FOR APPLICATION SPECIFICATIONS.
6. PROCESSING: PRESSFIT TO PC BOARD.
7. MATING PC BOARD THICKNESS = 2.36±0.16MM OVER CONTACT PADS.
8. THIS PART CONFORMS TO CLASS B REQUIREMENTS OF COSMETIC SPEC PS-45499-002
9. MAXIMUM SCREW TORQUE FORCE 0.12Nm.

<b>EDGE CARD SPEC UPDATED</b> IEC NO: LUCP2015-2002 DRAWN BY: MPOFF 2014/09/30 CHECKED BY: DMORGAN 2014/10/13 APPR: SMILLER 2014/12/29 REV DESCRIPTION	QUALITY SYMBOLS		GENERAL TOLERANCES (UNLESS SPECIFIED)		DIMENSION STYLE		SCALE	DESIGN UNITS	THIRD ANGLE PROJECTION	
	▽=0	4 PLACES ±---	mm	INCH	MM ONLY		4:1	METRIC		
	▽=0	3 PLACES ±---			DRAWN BY DATE					
	▽=0	2 PLACES ±0.13			MPOFF 2014/05/23					
	1 PLACE ±0.25			CHECKED BY DATE						
	0 PLACE ±---			DMORGAN 2014/05/23						
				APPROVED BY DATE						
				SMILLER 2014/07/23						
				ANGULAR ± 2 °						
				DRAFT WHERE APPLICABLE MUST REMAIN WITHIN DIMENSIONS						
				MATERIAL NO.		DOCUMENT NO.		SHEET NO.		
				170545-1054		SD-170545-1054		1 OF 3		
				THIS DRAWING CONTAINS INFORMATION THAT IS PROPRIETARY TO MOLEX INCORPORATED AND SHOULD NOT BE USED WITHOUT WRITTEN PERMISSION						

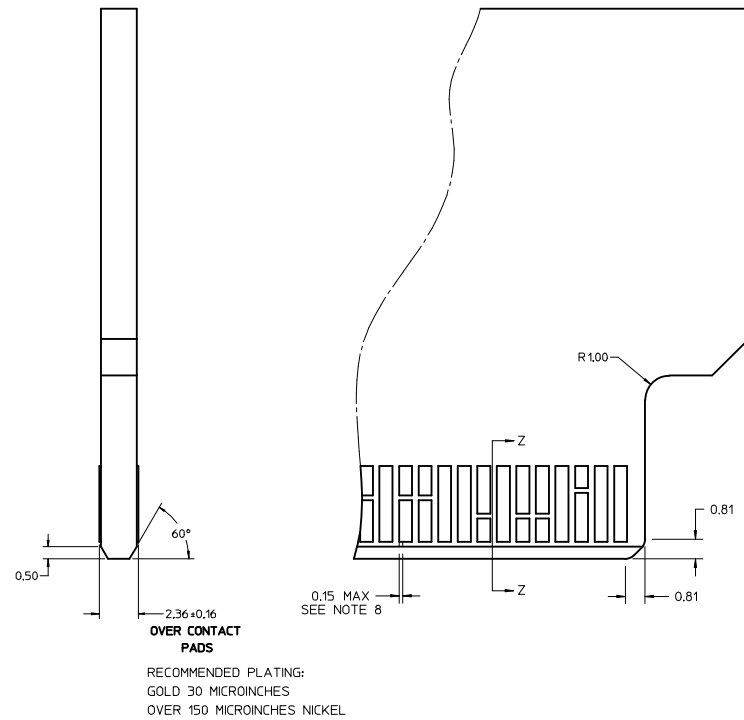
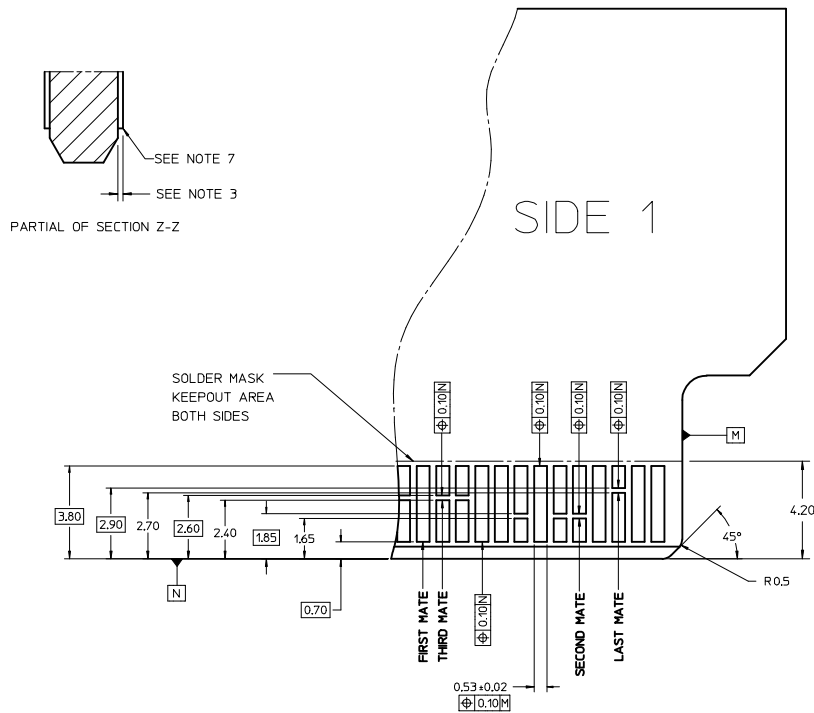


MOTHER BOARD HOLE LAYOUT (COMPONENT SIDE)

MOTHER BOARD HOLE LAYOUT (BACK SIDE)

SEE SHEET 1 IEC NO: UCP2015-2002 DRAWINGS 2014/09/30 CHKD:MPOFF 2014/10/13 APPR:SMILLER 2014/12/29	QUALITY SYMBOLS	GENERAL TOLERANCES (UNLESS SPECIFIED)	DIMENSION STYLE	SCALE	DESIGN UNITS	THIRD ANGLE PROJECTION
	$\nabla=0$	4 PLACES ± ---	mm	MM ONLY	4:1	METRIC
	$\nabla=0$	3 PLACES ± 0.13	INCH			
	$\nabla=0$	2 PLACES ± 0.25				
		ANGULAR ± 2 °				
		DRAFT WHERE APPLICABLE MUST REMAIN WITHIN DIMENSIONS				
			MATERIAL NO.	DATE	DATE	TITLE
			SEE SHEET 1	2014/05/23	2014/05/23	EDGE LINE ESP30 12.5GB 0.093"PCB/0.8MM PITCH 54 CKTS
				2014/07/23		<b>molex</b>
						DOCUMENT NO. SD-170545-1054
						SHEET NO. 2 OF 3

# MODULE EDGE CARD CONTACT DETAIL



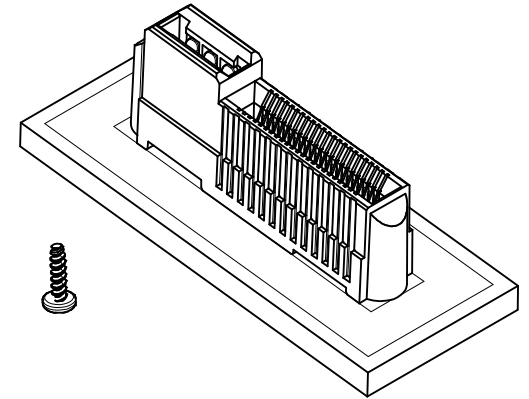
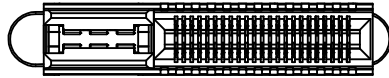
## MATING PCB NOTES:

- CONNECTOR LAND CONDITIONS SHALL MEET THE MOST CURRENT REVISION OF PCB SPECIFICATION IPC-6012C-2010 SECTION 3.5.4.4.
- DIMENSIONS APPLY TO LANDS ON BOTH SIDES OF THE BOARD.
- THE THICKNESS OF THE OUTER METAL LAYERS, INCLUDING FOIL, COPPER PLATING, AND THE PROTECTIVE SURFACE FINISH, SHALL BE 0.066mm MAXIMUM.
- CHAMFER ROUGHNESS NOT TO EXCEED 3.17 MICROMETERS.
- CHAMFER PROCESS SHALL NOT DAMAGE THE GOLD EDGE LANDS.
- EDGE CARD CHAMFER NOT TO GO THROUGH GOLD LANDS.
- 0.03mm MAXIMUM PLATING OVERHANG ON ALL GOLD LAND EDGES.
- MOLEX RECOMMENDS NO TIE-BARS ON THE LEADING EDGE OF THE GOLD LAND. IF TIE-BARS ARE USED, THEY SHALL BE PLACED TO ONE SIDE OF THE GOLD LAND. APPLIES TO ALL GOLD LANDS.

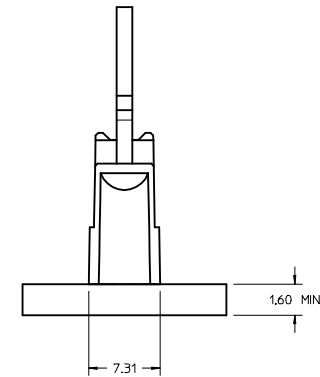
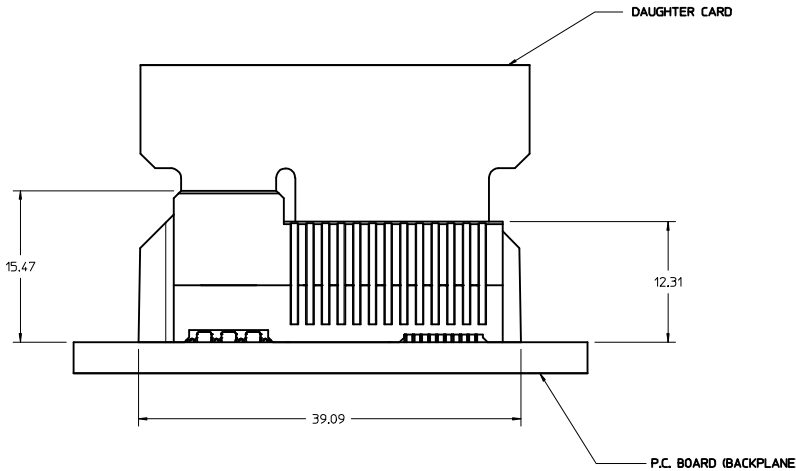
<b>SEE SHEET 1</b> IEC NO: UICP2015-2002 DRAWINGS: 2014/09/30 CHKD: MPOFF 2014/10/13 APPR: SMILLER 2014/12/29	QUALITY SYMBOLS ∇=0 ∇=0 ∇=0	GENERAL TOLERANCES (UNLESS SPECIFIED)		DIMENSION STYLE <b>MM ONLY</b>		SCALE <b>10:1</b>	DESIGN UNITS <b>METRIC</b>	THIRD ANGLE PROJECTION
		4 PLACES ±---   ±---   mm   INCH 3 PLACES ±---   ±---   ±---   ±--- 2 PLACES ±0.13   ±---   ±---   ±--- 1 PLACE ±0.25   ±---   ±---   ±--- 0 PLACE ±---   ±---   ±---   ±---	ANGULAR ± 2 ° DRAFT WHERE APPLICABLE MUST REMAIN WITHIN DIMENSIONS		DRAWN BY MPOFF DATE 2014/05/23	CHECKED BY DMORGAN DATE 2014/05/23	APPROVED BY SMILLER DATE 2014/07/23	TITLE <b>EDGELINE ESP30 12.5GB                  0.093"PCB/0.8MM PITCH                  54 CKTS</b>
			MATERIAL NO. <b>SEE SHEET 1</b>		DOCUMENT NO. <b>SD-170545-1054</b>		SHEET NO. <b>3 OF 3</b>	

THIS DRAWING CONTAINS INFORMATION THAT IS PROPRIETARY TO MOLEX INCORPORATED AND SHOULD NOT BE USED WITHOUT WRITTEN PERMISSION

# P.C. BOARD MOUNTING



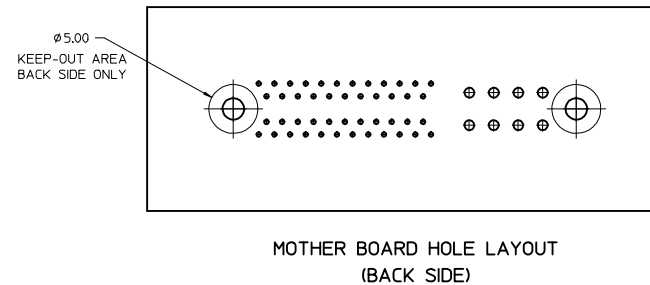
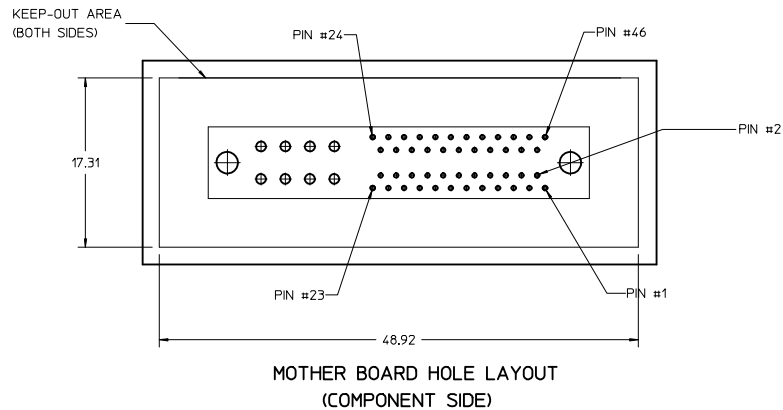
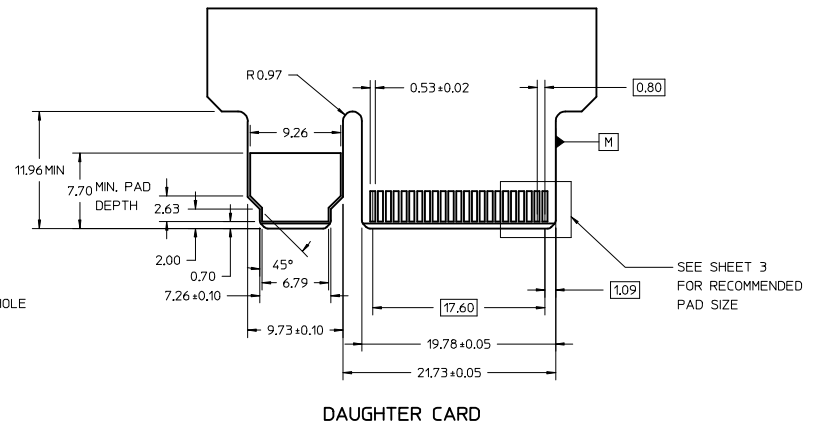
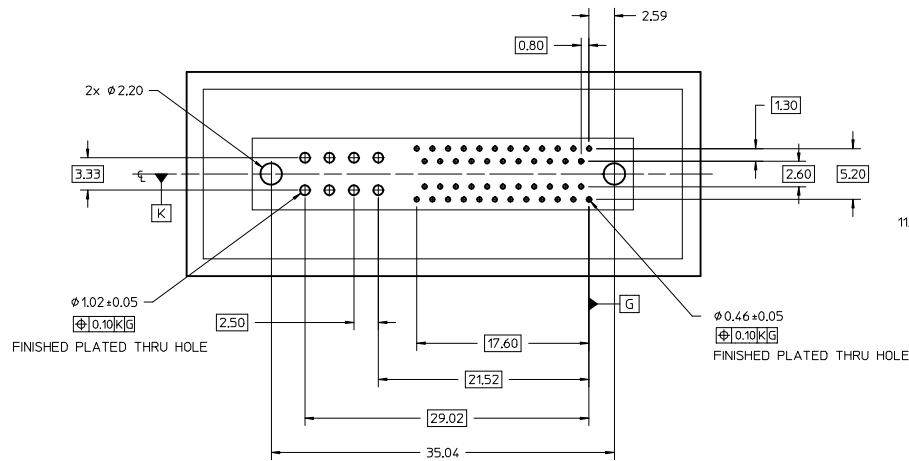
M1.8x8  
 THREAD-FORMING SCREW  
 SUGGESTED SOURCE:  
 ACUMENT  
 6125 EIGHTEEN MILE ROAD  
 STERLING HEIGHTS, MICHIGAN 48314  
 TEL.: 1.800.544.6117  
 P/N: 3BTP8567-00  
 (NOT SUPPLIED BY MOLEX)



**NOTES:**

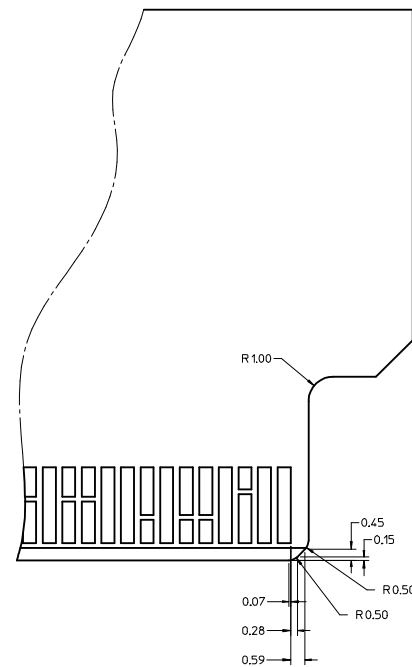
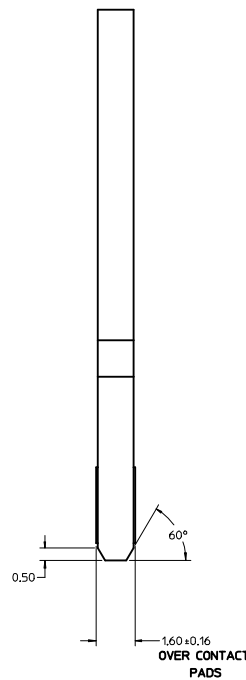
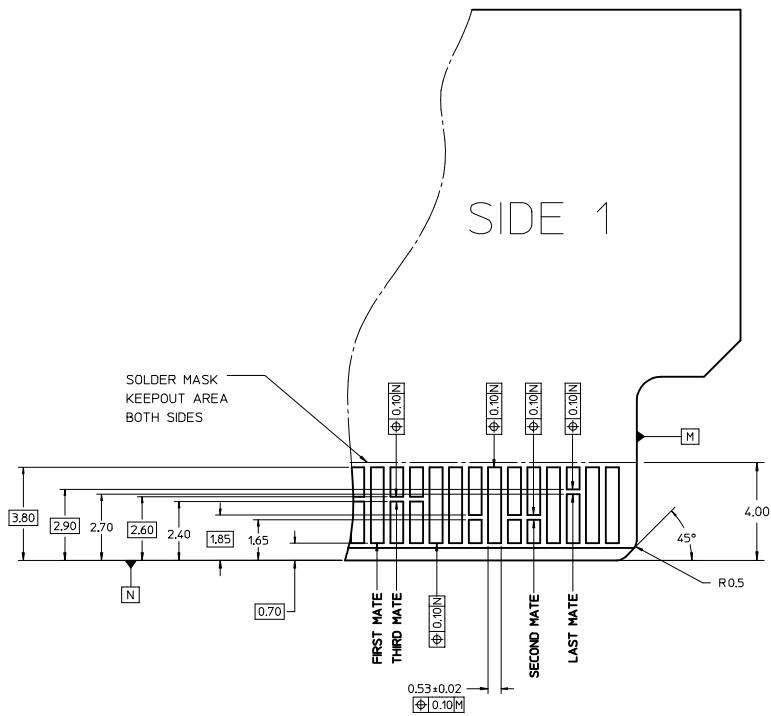
1. MATERIAL:  
 HOUSING - GLASS FILLED THERMOPLASTIC, 94-V0, BLACK  
 TERMINALS - COPPER ALLOY
2. FINISH:  
 CONTACT AREA: HARD GOLD -0.76µm MIN OVER 3.80µm NICKEL  
 COMPLIANT AREA: TIN - 0.76/152µm OVER NICKEL
3. REFER TO PS-76861-100 PRODUCT SPECIFICATION FOR ALL  
 ELECTRICAL, MECHANICAL AND ENVIRONMENTAL SPECIFICATIONS.
4. REFER TO PK-76861-900 FOR ALL PACKAGING SPECIFICATIONS.
5. PROCESSING: PRESSFIT TO PC BOARD.
6. MATING PC BOARD THICKNESS = 1.60±0.16MM OVER CONTACT PADS.
7. PRODUCT IS ELV AND RoHS COMPLIANT. LEVEL OF COMPLIANCE: 6/6  
 ALL BANNED SUBSTANCES ARE REMOVED:  
 Pb (LEAD)  
 HEXAVALENT CHROMIUM (CrVI)  
 CADMIUM  
 MERCURY  
 POLYBROMINATED BIPHENYL (PBB)  
 POLYBROMINATED DIPHENYL ETHER (PBDE)
8. THIS PART CONFORMS TO CLASS B REQUIREMENTS  
 OF COSMETIC SPEC PS-45499-002
9. MAXIMUM SCREW TORQUE FORCE 0.12Nm.

REMOVED SHEET 4 IEC NO: UCP2013-1207 DRAWN BY: DROSCA CHKD: DRWDRSCA APPR: JCOMERCI DATE: 2012/09/25 2012/11/16	QUALITY SYMBOLS	GENERAL TOLERANCES (UNLESS SPECIFIED)	DIMENSION STYLE	SCALE	DESIGN UNITS	THIRD ANGLE PROJECTION	
	▽ - 0	mm INCH	MM ONLY	4:1	METRIC	☉	
	▽ - 0	4 PLACES ± --- ± --- 3 PLACES ± --- ± --- 2 PLACES ± 0.13 ± --- 1 PLACE ± 0.25 ± ---	DRAWN BY DATE DROSCA 12/02/2008 CHECKED BY DATE JCOMERCI 12/02/2008 APPROVED BY DATE JCOMERCI 2009/08/04	TITLE	EDGELINE+LPH 12.5GB 0.062"PCB/0.8MM PITCH 46 CKTS		
	▽ - 0	DRAFT WHERE APPLICABLE MUST REMAIN WITHIN DIMENSIONS	MATERIAL NO. 76861-1000	DOCUMENT NO. SD-76861-100	MOLEX INCORPORATED		
SIZE D		THIS DRAWING CONTAINS INFORMATION THAT IS PROPRIETARY TO MOLEX INCORPORATED AND SHOULD NOT BE USED WITHOUT WRITTEN PERMISSION					



<b>SEE SHEET 1</b> IEC NO: UCP2013-1207 DRAWN BY: DROSCA CHYKZ APPR: JCOMERCI 2012/09/25 2012/11/16	QUALITY SYMBOLS	GENERAL TOLERANCES (UNLESS SPECIFIED)	DIMENSION STYLE	SCALE	DESIGN UNITS	THIRD ANGLE PROJECTION																										
	$\nabla=0$ $\nabla=0$	<table border="1"> <thead> <tr> <th></th> <th>mm</th> <th>INCH</th> </tr> </thead> <tbody> <tr> <td>4 PLACES</td> <td>±---</td> <td>±---</td> </tr> <tr> <td>3 PLACES</td> <td>±---</td> <td>±---</td> </tr> <tr> <td>2 PLACES</td> <td>± 0.13</td> <td>±---</td> </tr> <tr> <td>1 PLACE</td> <td>± 0.25</td> <td>±---</td> </tr> <tr> <td colspan="3">ANGULAR ±1/2°</td> </tr> </tbody> </table>		mm	INCH	4 PLACES	±---	±---	3 PLACES	±---	±---	2 PLACES	± 0.13	±---	1 PLACE	± 0.25	±---	ANGULAR ±1/2°			<table border="1"> <thead> <tr> <th>DATE</th> <th>DATE</th> </tr> </thead> <tbody> <tr> <td>DRAWN BY: DROSCA 12/02/2008</td> <td>CHECKED BY: DATE</td> </tr> <tr> <td>APPROVED BY: JCOMERCI 12/02/2008</td> <td>DATE</td> </tr> <tr> <td>JCOMERCI 2009/08/04</td> <td></td> </tr> </tbody> </table>	DATE	DATE	DRAWN BY: DROSCA 12/02/2008	CHECKED BY: DATE	APPROVED BY: JCOMERCI 12/02/2008	DATE	JCOMERCI 2009/08/04		4:1	METRIC	
		mm	INCH																													
	4 PLACES	±---	±---																													
3 PLACES	±---	±---																														
2 PLACES	± 0.13	±---																														
1 PLACE	± 0.25	±---																														
ANGULAR ±1/2°																																
DATE	DATE																															
DRAWN BY: DROSCA 12/02/2008	CHECKED BY: DATE																															
APPROVED BY: JCOMERCI 12/02/2008	DATE																															
JCOMERCI 2009/08/04																																
DRAFT WHERE APPLICABLE MUST REMAIN WITHIN DIMENSIONS		MATERIAL NO. <b>SEE SHEET 1</b>		DOCUMENT NO. <b>SD-76861-100</b>		TITLE <b>EDGE LINE+LPH 12.5GB 0.062"PCB/0.8MM PITCH 46 CKTS</b>																										
		MOLEX INCORPORATED		SHEET NO. 2 OF 3																												

# MODULE EDGE CARD CONTACT DETAIL



RECOMMENDED PLATING:  
GOLD 30μNCHES  
OVER 150μNCHES  
NICKEL

**Note:**

These are generic details that describe the configuration of various PCB design elements. The customer must determine where and when to use each element to accommodate their specific application.

<b>SEE SHEET 1</b> IEC NO: UCP2013-1207 DRAWN BY: DROS CHYK: APPR: JCOMERCI 2012/09/25 2012/11/16	QUALITY SYMBOLS	GENERAL TOLERANCES (UNLESS SPECIFIED)	DIMENSION STYLE	SCALE	DESIGN UNITS	THIRD ANGLE PROJECTION
	=0 =0	mm INCH 4 PLACES ± --- ± --- 3 PLACES ± --- ± --- 2 PLACES ± 0.13 ± --- 1 PLACE ± 0.25 ± --- ANGULAR ±1/2°	MM ONLY 10:1 METRIC	DRAWN BY: DROS DATE: 12/02/2008 CHECKED BY: JCOMERCI DATE: 12/02/2008 APPROVED BY: JCOMERCI DATE: 2009/08/04	TITLE: EDGELINE+LPH 12.5GB 0.062"PCB/0.8MM PITCH 46 CKTS	MOLEX INCORPORATED
DRAFT WHERE APPLICABLE MUST REMAIN WITHIN DIMENSIONS		MATERIAL NO: SEE SHEET 1		DOCUMENT NO: SD-76861-100		THIS DRAWING CONTAINS INFORMATION THAT IS PROPRIETARY TO MOLEX INCORPORATED AND SHOULD NOT BE USED WITHOUT WRITTEN PERMISSION