

Distributed by:

JAMECO[®]
ELECTRONICS

www.Jameco.com ♦ 1-800-831-4242

The content and copyrights of the attached
material are the property of its owner.

Jameco Part Number 802863





PS-79107
 PRODUCT SPECIFICATION
 2mm DUAL ROW VERTICAL RECEPTACLE ASSEMBLIES

TABLE OF CONTENTS

1.0 SCOPE
 2.0 PRODUCT DESCRIPTION
 3.0 APPLICABLE DOCUMENTS
 4.0 AMBIENT CONDITIONS
 5.0 GENERAL REQUIREMENTS
 6.0 AGENCY APPROVALS
 7.0 ELECTRICAL REQUIREMENTS
 8.0 MECHANICAL REQUIREMENTS
 9.0 ENVIRONMENTAL REQUIREMENTS
 10.0 QUALITY ASSURANCE PROVISIONS
 11.0 PACKAGING
 12.0 QUALIFICATION REQUIREMENTS
 13.0 APPENDIX

DRWG. NO. PS-79107

DRWG. NO. PS-79107

REV.	BI	AI	AI	AI	AI	AI	AI	AI	AI	BI	AI	AI	AI	AI	AI	AI	AI	AI								
SHT.	01	02	03	04	05	06	07	08	09	10	11	12	13	14	15	16	17									
REV.	AI	AI	AI	AI	AI	AI	AI	AI	AI	AI	AI															
SHT.	18	19	20	21	22	23	24	25	26	27	28															
FILE NAME		PS79107.SOI		 =  = REVISE ONLY ON CAD SYSTEM		REV.	BI																			
		THIS DRAWING CONTAINS INFORMATION THAT IS PROPRIETARY TO MOLEX INC. AND SHOULD NOT BE USED WITHOUT WRITTEN PERMISSION.												SHT.	I											



PS-79107
PRODUCT SPECIFICATION
2mm DUAL ROW VERTICAL RECEPTACLE ASSEMBLIES

1.0 SCOPE
1.1 SUBJECT:

This specification details the mechanical, electrical and environmental performance of the .079" X .079" (2mm X 2mm) grid dual row vertical receptacle connector series numbers 79107, 79108, & 79109. This connector series is designed for through hole, flat flex cable, and surface mount applications respectively as described in Para 2.1. Mating connectors shall have .020"(.51mm) square or round posts whose axes are perpendicular to the plane of the PCB to which the 2mm series receptacles are soldered.

2.0 PRODUCT DESCRIPTION

2.1 The types covered in this specification are as follows:

2.1.1 A-79107-**** Vertical Receptacle with .118"(3.00mm) and .075"(1.91mm) long PC tails.

2.1.2 A-79108-**** Vertical Receptacle with .050"(1.27mm) long PC tails for FFC or FPC application.

2.1.3 A-79109-**** Vertical Receptacle with gull wing surface mount tails and optional hold down pegs.

Note: "****" Indicates the presence of a 4 digit code used to identify plating, mounting, and circuit size options.

2.2 The dual row vertical receptacle series is designed to connect; (1) PC board to PC board in parallel, (2) PC board to PC board perpendicular.

DRWG. NO. PS-79107

DRWG. NO. PS-79107

REV.
SHT.

FILE NAME PS79107.S02	=	REVISE ONLY ON CAD SYSTEM	REV.	A1
		THIS DRAWING CONTAINS INFORMATION THAT IS PROPRIETARY TO MOLEX INC. AND SHOULD NOT BE USED WITHOUT WRITTEN PERMISSION.	SHT.	2



PS-79107
PRODUCT SPECIFICATION
2mm DUAL ROW VERTICAL RECEPTACLE ASSEMBLIES

- 2.3 The connector utilizes a dualbeam female terminal designed to provide east-west mating and early entry mating when mated from the top.
- 2.4 The A-79107-**** series has PC tails for solder termination to either a .063"(1.57mm) or .031"(0.79mm) nominal thick PC board with .025"(0.64mm) minimum diameter holes (See Figure 1). The PC tails have a tapered lead-in for ease of insertion into the PC board.
- 2.5 The A-79109-**** surface mount version with pegs is also designed to accommodate bottom entry mating through a PC board. See Figure 2 for suggested PC board layout. Performance of bottom entry is expected to be similar to top entry, however data is not currently available.
- 2.6 This connector series is available in a range of circuit sizes from 4 circuit (2 X 2) through 50 circuit (2 X 25) in 2 circuit increments.

3.0 APPLICABLE DOCUMENTS

- 3.1 All documents referenced shall be of the latest revision.
- 3.2 The order of precedence detailing requirements of this specification shall be as follows:
 - 1. Product Drawings
 - 2. This Specification
 - 3. Reference Documents

3.3 Reference Documents

- 3.3.1 MIL-STD-202: Test methods for electronics and electrical component parts.
- 3.3.2 MIL-STD-1344: Test methods for electrical connectors.

DRWG. NO. PS-79107

DRWG. NO. PS-79107

REV.
SHT.

FILE NAME PS79107.S03



REVISE ONLY ON CAD SYSTEM

REV.	AI
SHT.	3



PS-79107
 PRODUCT SPECIFICATION
 2mm DUAL ROW VERTICAL RECEPTACLE ASSEMBLIES

- 3.3.3 ASTM-B103: Alloy 521.
- 3.3.4 QQ-N-290: Nickel plating.
- 3.3.5 MIL-G-45204: Gold plating.
- 3.3.6 MIL-T-10727: Tin plating.
- 3.3.7 MIL-M-24519: Molding plastics.
- 3.3.8 UL-94: Tests for flammability of plastic materials.
- 3.3.9 ES-88: Molex Finish Specification.

4.0 AMBIENT CONDITIONS

4.1 Ambient operating conditions for qualification shall be:

Temperature: 25° +/- 5° C
 Relative Humidity: 50% +/- 20%
 ATM Pressure: 650 - 800 mm Hg

5.0 GENERAL REQUIREMENTS

5.1 Design construction and physical dimensions shall be as specified on the A-79107, A-79108, and A-79109 product drawings.

5.2 Materials

5.2.1 Housing: 94V-0 glass filled Liquid Crystal Polymer. Oxygen index greater than 28.
 Color: Black.

5.2.2 Terminal: Phosphor bronze, per ASTM-B103.

DRWG. NO. PS-79107

DRWG. NO. PS-79107

REV.
SHT.

FILE NAME PS79107.S04	=	REVISE ONLY ON CAD SYSTEM	REV.	A I
THIS DRAWING CONTAINS INFORMATION THAT IS PROPRIETARY TO MOLEX INC. AND SHOULD NOT BE USED WITHOUT WRITTEN PERMISSION.			SHT.	4



PS-79107
PRODUCT SPECIFICATION
2mm DUAL ROW VERTICAL RECEPTACLE ASSEMBLIES

5.3 Plating

5.3.1 All tin finishes to be per MIL-T-10727B and MIL-P-81728A. All gold finishes to be per MIL-G-45204B, Type II, Grade C, Class I. All nickel finishes to be per QQ-N-290, Class II. Also see Molex Plating Standard ES-88.

5.3.2 Plating Code 574 (Per Molex ES-88):
.000030" (0.00076mm) min. gold plate in contact area with .000075" (0.00190mm) min. tin/lead (90/10) plate in tail area over .000050" (0.00127mm) min. nickel plate overall.

5.3.3 Plating Code 571 (Per Molex ES-88):
.000015" (0.00038mm) min. gold plate in contact area with .000075" (0.00190mm) min. tin/lead (90/10) plate in tail area over .000050" (0.00127mm) min. nickel plate overall.

5.4 Recommended Printed Circuit Board Specification

5.4.1 PCB thickness: .062" +/- .007" (1.57mm +/- 0.18) and .031 +/- .005 (0.79mm +/- 0.13).

5.4.2 Recommended PCB Hole/SMT Land Pattern:
See Figure 2 .

5.5 Recommended mating pin lengths:

5.5.1 For top entry mating, the recommended mating pin length is .120" to .170" (3.05mm to 4.30mm).

5.5.2 For bottom entry mating, the recommended mating pin lengths are .240" to .255" (6.10mm to 6.50mm) for a .047" PCB and

DRWG. NO.
PS-79107

DRWG. NO.
PS-79107

REV.

SHT.

FILE NAME
PS79107.S05



REVISE ONLY ON CAD SYSTEM

REV.

A1

THIS DRAWING CONTAINS INFORMATION THAT IS PROPRIETARY TO MOLEX INC. AND SHOULD NOT BE USED WITHOUT WRITTEN PERMISSION.

SHT.

5



PS-79107
PRODUCT SPECIFICATION
2mm DUAL ROW VERTICAL RECEPTACLE ASSEMBLIES

.255" to .270" (6.50mm to 6.85mm) for a .062" PCB. This dimension is measured from the bottom of the bottom entry PC board, not from the insulator on the mating header.

5.6 Sides of square pins must be parallel with the axis of the row within 5 (+/-) degrees.

6.0 AGENCY APPROVALS

6.1 U.L. Recognition: File E29179.

6.2 C.S.A. Recognition: File LR19980, Page 8, dated 8-21-91.

7.0 ELECTRICAL REQUIREMENTS

7.1 Insulation Resistance

7.1.1 Insulation resistance when tested per MIL-STD-202, Method 302, Condition B at ambient shall be as follows:

1. 5000 mega ohms minimum initially.
2. 1000 mega ohms minimum following humidity.

7.2 Dielectric Withstanding Voltage

7.2.1 Dielectric withstanding voltage shall be 500 VAC minimum at sea level. There shall be no breakdown or flash-over between adjacent contacts and leakage current shall not exceed 5.0 milliamps when unmated connectors are tested per MIL-STD-202, Method 301.

DRWG. NO. PS-79107

REV.
SHT.

FILE NAME PS79107.S06	=	REVISE ONLY ON CAD SYSTEM	REV.	AI
THIS DRAWING CONTAINS INFORMATION THAT IS PROPRIETARY TO MOLEX INC. AND SHOULD NOT BE USED WITHOUT WRITTEN PERMISSION.			SHT.	6

DRWG. NO. PS-79107



PS-79107
PRODUCT SPECIFICATION
2mm DUAL ROW VERTICAL RECEPTACLE ASSEMBLIES

7.3 Contact Resistance (Low Level)

7.3.1 Defined as the normal bulk resistance plus constriction resistance. The maximum value shall not exceed 15 milli-ohms total with a maximum change of 10 milliohms from initial following all stress tests. The method of measurement shall be per MIL-STD-1344A, Method 3002.1.

7.4 Current Rating

7.4.1 1.9 Amps DC or AC RMS per contact with no more than 30° C temperature rise above ambient. All contacts wired in series.

7.4.2 1.0 Amps DC or AC RMS per contact at 70° C with 30° C maximum temperature rise. All contacts wired in series.

7.5 Current Cycling

7.5.1 Subject the mated connectors to 75% of the current necessary to yield a 30° C temperature rise (as found in para. 7.4) in cycles of 45 minutes on and 15 minutes off for 240 hours after which the conditions of para 7.3 are met.

8.0 MECHANICAL REQUIREMENTS

8.1 Mating Force - Entire Connector

8.1.1 The maximum force to mate a connector pair shall be 10 oz. multiplied by the number of positions, excluding hardware, when cycled per MIL-STD-1344, Method 2013 for the following conditions:

DRWG. NO.
PS-79107

DRWG. NO.
PS-79107

REV.					
SHT.					
FILE NAME	=	REVISE ONLY ON CAD SYSTEM			REV. A1
PS79107.S07				SHT. 7	



PS-79107
PRODUCT SPECIFICATION
2mm DUAL ROW VERTICAL RECEPTACLE ASSEMBLIES

1. Ambient conditions.
2. Nonrigid fixturing of connector pairs.
3. 10 inches/minute max. cycling rate.
4. 50 mate/unmate cycles.

8.2 Individual Insertion/Withdrawal Forces

8.2.1 The force to insert and withdraw a steel gauge pin shall be 8 ounces maximum and 1.5 ounces minimum respectively, excluding hardware, when tested per MIL-STD-1344, Method 2014 for the following conditions:

1. Polished steel gauge pins per Fig 3.
2. Insertion depth to be .060" from the point at which gauge makes contact with the terminal beams.
3. Nonrigid fixturing shall be used.
4. 3 cycles.

8.3 Normal Force

8.3.1 The minimum normal "force" shall be 100 grams following thermal aging per para. 9.4.1 and 50 mating/unmating cycles per para. 8.4.1 when tested at minimum deflection as caused by an .020" +/- .001" square pin. Measurement shall be taken in a manner simulating actual use.

8.4 Durability

8.4.1 For the 15 microinch gold over 50 microinch nickel plating option, the connector shall meet the requirements of paras. 7.3 and 8.3 after the following sequential conditioning:

1. 50 mate/unmate cycles.
2. Seventeen hours of Flowers of Sulfur per Molex test procedure.

DRWG. NO.
PS-79107

DRWG. NO.
PS-79107

REV.

SHT.

FILE NAME
PS79107.S08



=



=

REVISE ONLY ON CAD SYSTEM

REV.

AI

THIS DRAWING CONTAINS INFORMATION THAT IS PROPRIETARY TO MOLEX INC. AND SHOULD NOT BE USED WITHOUT WRITTEN PERMISSION.

SHT.

8



PS-79107
 PRODUCT SPECIFICATION
 2mm DUAL ROW VERTICAL RECEPTACLE ASSEMBLIES

8.5 Terminal Strength

8.5.1 Solder tails shall withstand two hand bending cycles per MIL-STD-202, Method 211A, Condition "B" with no evidence of breaking or cracking of the base metal at 20X magnification.

8.6 Solderability

8.6.1 All terminals shall have 95% coverage per the requirements of MIL-STD-202, Method 208 with conditions as follows:

1. Solder Composition: 60/40 tin-lead per QQ-S-571 Type S.
2. Solder Temperature: 230° C +/- 5° C
3. Flux Type: Mildly activated, type RMA per MIL-F-14256.
4. Depth of Immersion: .080" (3.0mm)

8.7 Housing Retention

8.7.1 A tensile force is applied at a rate of 1 inch per minute to the housing perpendicular to the test board. The force at which the housing separates from the terminals is divided by the circuit size and recorded. This force to be 8 ounces minimum per terminal.

8.8 Individual Tensile (Surface Mount Only)

8.8.1 A tensile force perpendicular to the test board is applied at a rate of 1 inch per minute to individual surface mount terminals without housings. The force at which the terminal separates from the board is to be greater than 3 lbs.

DRWG. NO. PS-79107

DRWG. NO. PS-79107

REV.
SHT.

FILE NAME
PS79107.S09



REVISE ONLY ON CAD SYSTEM

REV. B1

THIS DRAWING CONTAINS INFORMATION THAT IS PROPRIETARY TO MOLEX INC. AND SHOULD NOT BE USED WITHOUT WRITTEN PERMISSION.

SHT. 9



PS-79107
 PRODUCT SPECIFICATION
 2mm DUAL ROW VERTICAL RECEPTACLE ASSEMBLIES

8.9 Full Connector Tensile (Surface Mount Only)

8.9.1 A tensile force perpendicular to the board is applied at a rate of 1 inch per minute to the entire connector. The force at which the housing separates from the terminals should be greater than 1 lb. per terminal pair.

8.10 Shear Test (Surface Mount Only)

8.10.1 A shear force parallel to the board and perpendicular to the lay of the connector is applied at a rate of 1 inch per minute. The force at which the connector distorts or shears off the board should be greater than 2 lbs. per terminal pair. See Fig 4.

8.11 Solder Joint Fatigue (Surface Mount Only)

8.11.1 There shall be no evidence of physical damage and contact resistance shall meet the conditions of para. 7.3 and there shall be no loss of electrical continuity greater than 1 microsecond after the following tests:

1. Tension: Subject the test board, as shown in Fig. 5, to .060" deflection perpendicular to the lay of the connector for 200 cycles. Repeat the above on a new sample except deflect parallel to the lay of the connector as shown in Fig. 6.
2. Compression: Subject the test board as shown in Fig. 7 to .060" deflection perpendicular to the lay of the connector for 200 cycles. Repeat the above on a new sample except deflect parallel to the lay of the connector as shown in Fig. 8.

DRWG. NO. PS-79107

DRWG. NO. PS-79107

REV.
SHT.

FILE NAME
PS79107.S10



REVISE ONLY ON CAD SYSTEM

REV. AI

SHT. IO

THIS DRAWING CONTAINS INFORMATION THAT IS PROPRIETARY TO MOLEX INC. AND SHOULD NOT BE USED WITHOUT WRITTEN PERMISSION.

SHT. IO



PS-79107
PRODUCT SPECIFICATION
2mm DUAL ROW VERTICAL RECEPTACLE ASSEMBLIES

9.0 ENVIRONMENTAL REQUIREMENTS

9.1 Resistance to Cleaning Solvents

9.1.1 Any markings shall remain legible and no damage or deterioration of the connector shall occur when tested per MIL-STD-202, Method 215. The following solvents shall be used:

1. 1-1-1 Trichloroethane
2. Freon TMS and TMC

9.2 Temperatures

9.2.1 The product is designed to operate at -55° C to 105° C continuous and withstand +219° C during vapor soldering without any deterioration of performance or physical damage.

9.3 Thermal Shock

9.3.1 There shall be no evidence of any physical damage. Connectors shall meet the dimensional requirements of the product drawings and contact resistance of para. 7.3. when tested per MIL-STD-202, Method 107, Condition A-1.

9.4 Temperature Life

9.4.1 The requirements of paras. 7.3 and 8.3 shall be met following thermal life per MIL-STD-202, Method 108, Test Condition "C" (500 hours at 105° C). Connectors shall remain in initial mated or unmated condition throughout thermal exposure.

DRWG. NO.

PS-79107

REV.

SHT.

FILE NAME
PS79107.S11



=



=

REVISE ONLY ON CAD SYSTEM

REV.

A 1

THIS DRAWING CONTAINS INFORMATION THAT IS PROPRIETARY TO MOLEX INC. AND SHOULD NOT BE USED WITHOUT WRITTEN PERMISSION.

SHT.

11

DRWG. NO.

PS-79107



PS-79107
 PRODUCT SPECIFICATION
 2mm DUAL ROW VERTICAL RECEPTACLE ASSEMBLIES

9.5 Humidity (Cyclical)

9.5.1 There shall be no evidence of physical damage, or discoloration and the requirements of paras. 7.1, 7.2, and 7.3 shall be met following testing per MIL-STD-1344, Method 1002, Type II, 96 hours (omit steps 7A and 7B). The Connectors shall be mated during exposure.

9.6 Humidity (Steady State)

9.6.1 There shall be no evidence of physical damage, discoloration, or corrosion and the requirements of paras. 7.1, 7.2, & 7.3 shall be met following testing per MIL-STD-202 Method 103, Condition A. No polarizing voltage measurement shall be taken.

9.7 Resistance to Solder Heat

9.7.1 There shall be no evidence of any physical damage and the connectors shall meet the dimensional requirements of the product drawings following:

1. MIL-STD-202, Method 210, Test Condition C (260° C 10 seconds).
2. Standard wave soldering process.

9.8 Vibration

9.8.1 There shall be no evidence of any physical damage, loosening of parts or loss of electrical continuity greater than 1.0 microsecond when mated connectors are tested per MIL-STD-202, Method 204, Test Condition A.

DRAWG. NO. PS-79107

DRAWG. NO. PS-79107

REV.
SHT.

FILE NAME
PS79107.S12



REVISE ONLY ON CAD SYSTEM

REV. A1

THIS DRAWING CONTAINS INFORMATION THAT IS PROPRIETARY TO MOLEX INC. AND SHOULD NOT BE USED WITHOUT WRITTEN PERMISSION.

SHT. 12



PS-79107
PRODUCT SPECIFICATION
2mm DUAL ROW VERTICAL RECEPTACLE ASSEMBLIES

9.9 Mechanical Shock

9.9.1 There shall be no evidence of any physical damage or loosening of parts. Nor shall there be any interruption of electrical continuity longer than one microsecond when tested per MIL-STD-202F, Method 213B, Condition A:

1. 1/2 Sine Wave.
2. 50 G, 11 millisecond pulse.
3. 3 shocks each along 3 mutually perpendicular axis, 18 shocks total.

9.10 Corrosive Atmosphere

9.10.1 Connectors shall meet the requirements of para. 7.3 when exposed to Flowers of Sulfur following conditioning per para. 8.4.

10.0 QUALITY ASSURANCE PROVISIONS

10.1 Materials Inspection

10.1.1 Materials inspection shall consist of certification supported by verifying data. Mechanical, chemical and electrical testing shall be done on a random basis.

11.0 PACKAGING

11.1 Unless otherwise specified, product will be packaged in tubes per packaging specifications PK-70783-0180 and PK-70783-0217.

12.0 QUALIFICATION REQUIREMENTS

12.1 Ambient conditions for qualification shall be per para. 4.1

DRWG. NO. PS-79107

DRWG. NO. PS-79107

REV.
SHT.

FILE NAME
PS79107.S13



=



=

REVISE ONLY ON CAD SYSTEM

REV.

A1

THIS DRAWING CONTAINS INFORMATION THAT IS PROPRIETARY TO MOLEX INC. AND SHOULD NOT BE USED WITHOUT WRITTEN PERMISSION.

SHT.

13



PS-79107
 PRODUCT SPECIFICATION
 2mm DUAL ROW VERTICAL RECEPTACLE ASSEMBLIES

12.2 Qualification testing shall be performed on samples taken from production lots.

12.3 Sample Grouping

12.3.1 Test group I shall consist of (20) A-79107-0024 (50 circuit, 15u" gold, through hole), (2) A-79109-0024 (50 ckt, 15u" gold, surface mount) connectors, and (22) 87089-5013 headers.

12.3.2 Test groups II & III shall consist of (16) A-79107-0024, (2) A-79109-0024 connectors, and (18) 87089-5013 headers each.

12.3.3 Test group IV shall consist of (4) A-79107-0024 connectors.

12.3.4 Test group V shall consist of (18) A-79107-0024 connectors mounted and loose as needed.

12.3.5 Test group VI shall consist of (24) A-79109-0024 and (26) A-79109-0260 connectors.

12.4 Sample Preparation

12.4.1 Through Hole: Four A-79107-0024 connectors are to be wave soldered to each through hole PC board.

12.4.2 Surface Mount: Solder paste consisting of metal alloy 63/37 eutectic tin-lead and a rosin mildly activated (RMA) flux is to be stenciled onto the solder lands of the surface mount boards in a layer no thicker than .010"(0.25mm). The surface mount connectors will then be vapor phase reflowed to the PC boards in approved equipment. Flourinert Liquid

DRWG. NO. PS-79107

DRWG. NO. PS-79107

REV.
SHT.

FILE NAME
PS79107.S14



REVISE ONLY ON CAD SYSTEM

REV. AI

THIS DRAWING CONTAINS INFORMATION THAT IS PROPRIETARY TO MOLEX INC. AND SHOULD NOT BE USED WITHOUT WRITTEN PERMISSION.

SHT. 14



PS-79107
PRODUCT SPECIFICATION
2mm DUAL ROW VERTICAL RECEPTACLE ASSEMBLIES

FC-70 is to be used with a primary vapor zone reflow time of 15 seconds and a secondary vapor zone dwelltime of 45 seconds. Each test board shall be cleaned immediately in a vapor degreaser and cleaned with freon TMS for at least 3 minutes.

12.5 Qualification testing shall be performed per the test sequence shown Figs. 9-15.

DRWG. NO.

PS-79107

REV.

SHT.

FILE NAME

PS79107.S15



=



=

REVISE ONLY ON CAD SYSTEM

REV.

A1

THIS DRAWING CONTAINS INFORMATION THAT IS PROPRIETARY TO MOLEX INC. AND SHOULD NOT BE USED WITHOUT WRITTEN PERMISSION.

SHT.

15

DRWG. NO.

PS-79107



PS-79107

PRODUCT SPECIFICATIONS
2mm DUAL ROW VERTICAL RECEPTACLE ASSEMBLIES

13.0 APPENDIX

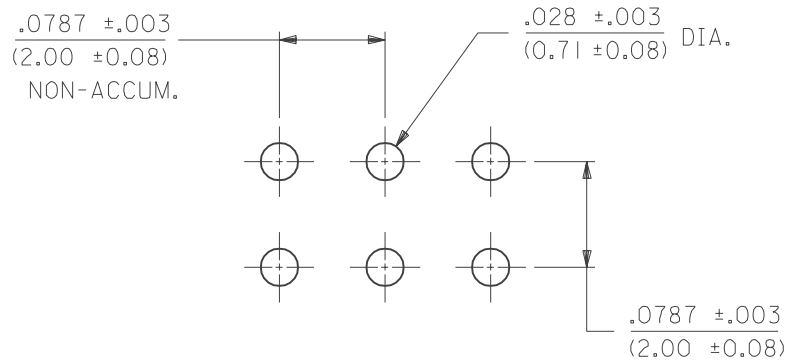


FIGURE 1
RECOMMENDED P.C. BOARD HOLE LAYOUT

DRWG. NO.

PS-79107

REV.

SHT.

FILE NAME

PS79107.S16



=



=

REVISE ONLY ON CAD SYSTEM

REV.

A 1

THIS DRAWING CONTAINS INFORMATION THAT IS PROPRIETARY TO MOLEX INC. AND SHOULD NOT BE USED WITHOUT WRITTEN PERMISSION.

SHT.

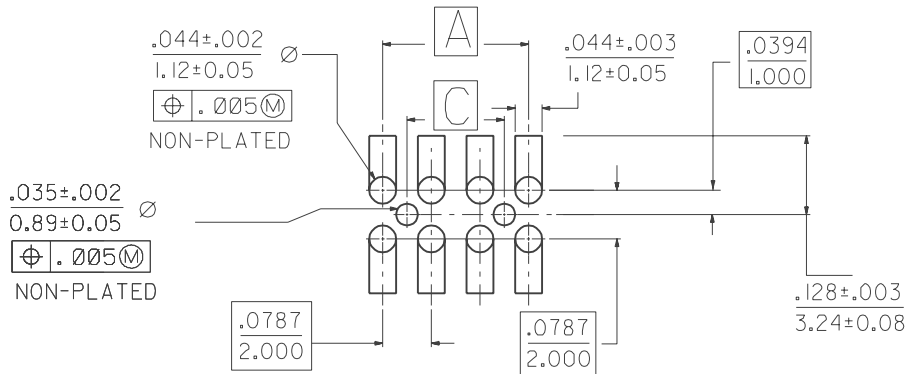
16

DRWG. NO.

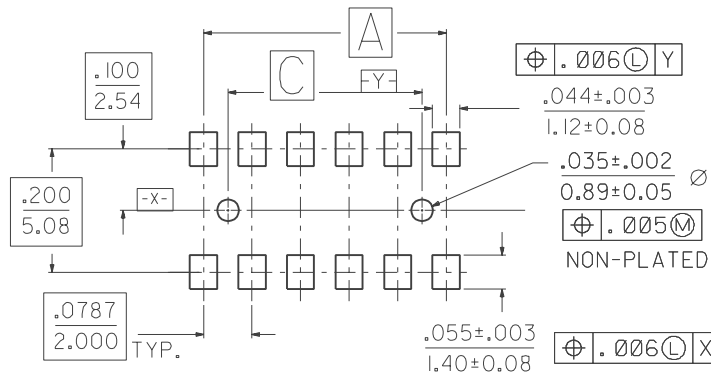
PS-79107



PS-79107
PRODUCT SPECIFICATION
2mm DUAL ROW VERTICAL RECEPTACLE ASSEMBLIES



BOTTOM ENTRY LAND LAYOUT



SMT PC BOARD LAND LAYOUT

FIGURE 2
RECOMMENDED P.C. BOARD LAND LAYOUTS

DRWG. NO. PS-79107

REV.
SHT.

FILE NAME
PS79107.S17



REVISE ONLY ON CAD SYSTEM

REV. A1

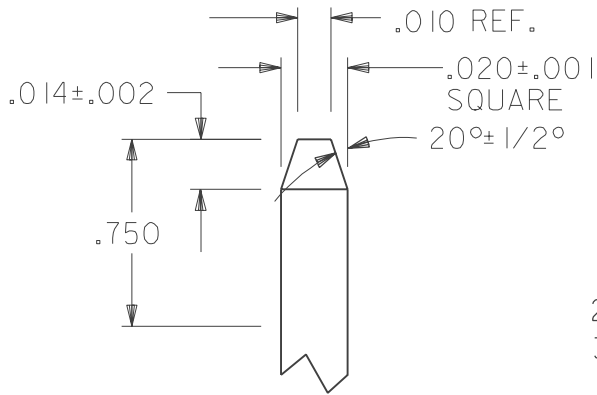
THIS DRAWING CONTAINS INFORMATION THAT IS PROPRIETARY TO MOLEX INC. AND SHOULD NOT BE USED WITHOUT WRITTEN PERMISSION.

SHT. 17

DRWG. NO. PS-79107



PS-79107
PRODUCT SPECIFICATION
2mm DUAL ROW VERTICAL RECEPTACLE ASSEMBLIES



NOTES:

1. MATERIAL: TOOL STEEL.
2. FINISH: 4 MICROINCH MAX.
3. $.020 \pm .001$ MUST BE HELD OVER $.750$ " DIMENSION.

FIGURE 3
GAUGE PIN

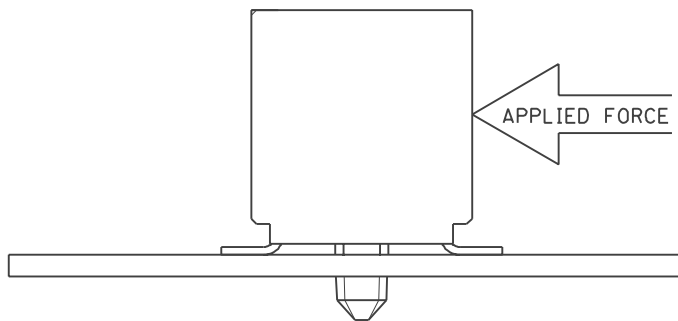


FIGURE 4
PERPENDICULAR SHEAR

DRWG. NO.
PS-79107

REV.

SHT.

FILE NAME
PS79107.S18



=



=

REVISE ONLY ON CAD SYSTEM

REV.

A 1

THIS DRAWING CONTAINS INFORMATION THAT IS PROPRIETARY TO
MOLEX INC. AND SHOULD NOT BE USED WITHOUT WRITTEN PERMISSION.

SHT.

18

DRWG. NO.
PS-79107



PS-79107
PRODUCT SPECIFICATION
2mm DUAL ROW VERTICAL RECEPTACLE ASSEMBLIES

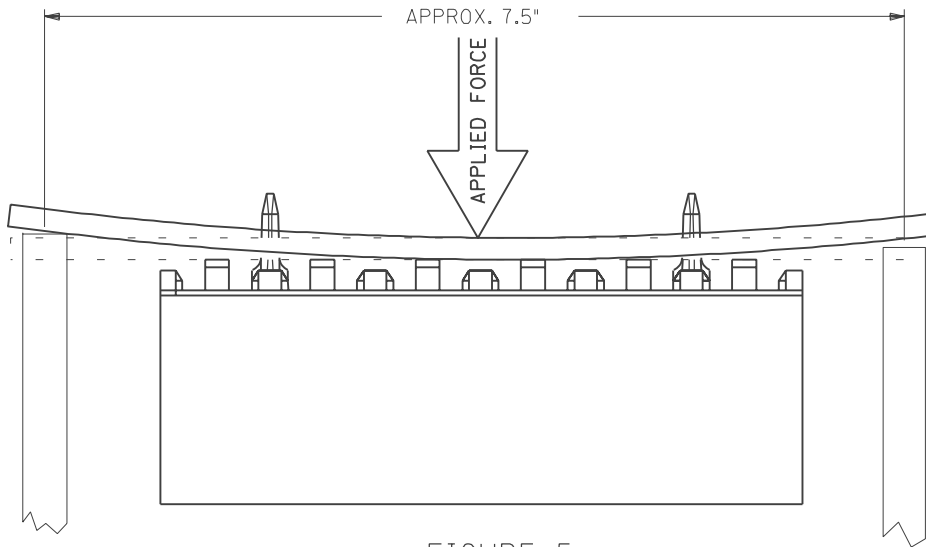


FIGURE 5
PERPENDICULAR SOLDER JOINT FATIGUE (TENSION)

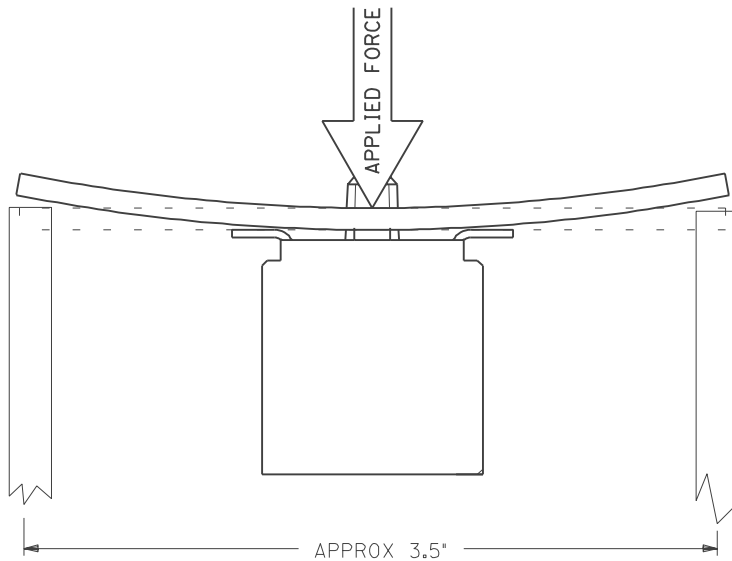


FIGURE 6
PARALLEL SOLDER JOINT FATIGUE (TENSION)

DRWG. NO.
PS-79107

REV.
SHT.

FILE NAME
PS79107.S19



=



=

REVISE ONLY ON CAD SYSTEM

REV. A1

THIS DRAWING CONTAINS INFORMATION THAT IS PROPRIETARY TO
MOLEX INC. AND SHOULD NOT BE USED WITHOUT WRITTEN PERMISSION.

SHT. 19

DRWG. NO.
PS-79107



PS-79107
PRODUCT SPECIFICATION
2mm DUAL ROW VERTICAL RECEPTACLE ASSEMBLIES

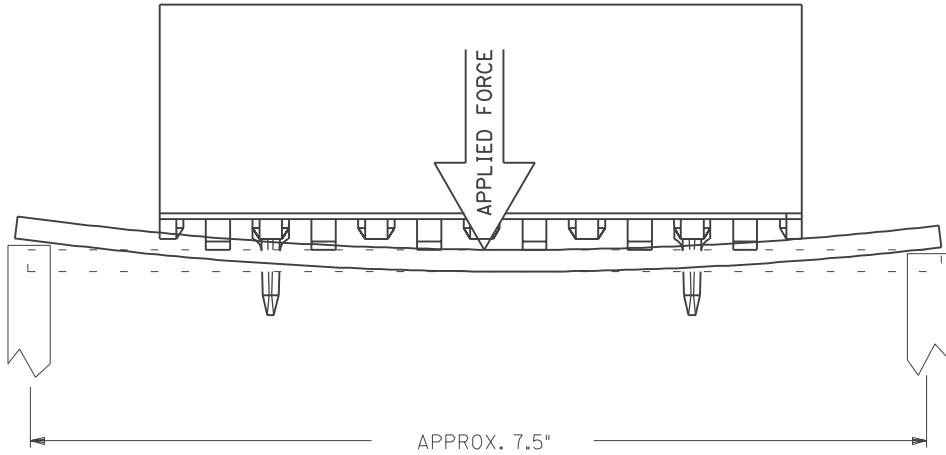


FIGURE 7
PERPENDICULAR SOLDER JOINT FATIGUE (COMPRESSION)

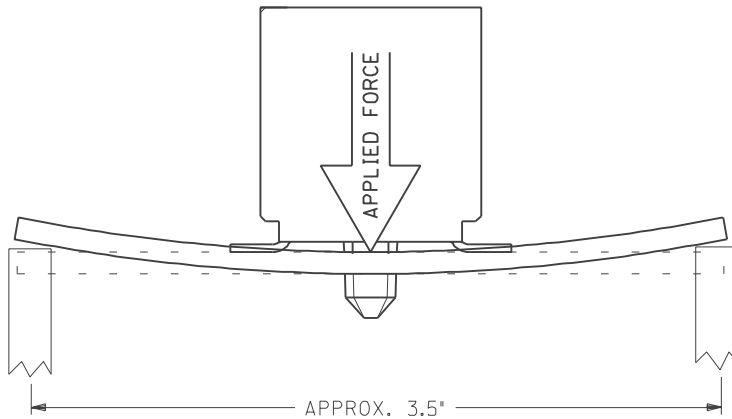


FIGURE 8
PARALLEL SOLDER JOINT FATIGUE (COMPRESSION)

DRWG. NO.
PS-79107

REV.

SHT.

FILE NAME
PS79107.S20



=



=

REVISE ONLY ON CAD SYSTEM

REV.

A1

THIS DRAWING CONTAINS INFORMATION THAT IS PROPRIETARY TO
MOLEX INC. AND SHOULD NOT BE USED WITHOUT WRITTEN PERMISSION.

SHT.

20

DRWG. NO.
PS-79107



PS-79107

PRODUCT SPECIFICATION
2mm DUAL ROW VERTICAL RECEPTACLE ASSEMBLIES

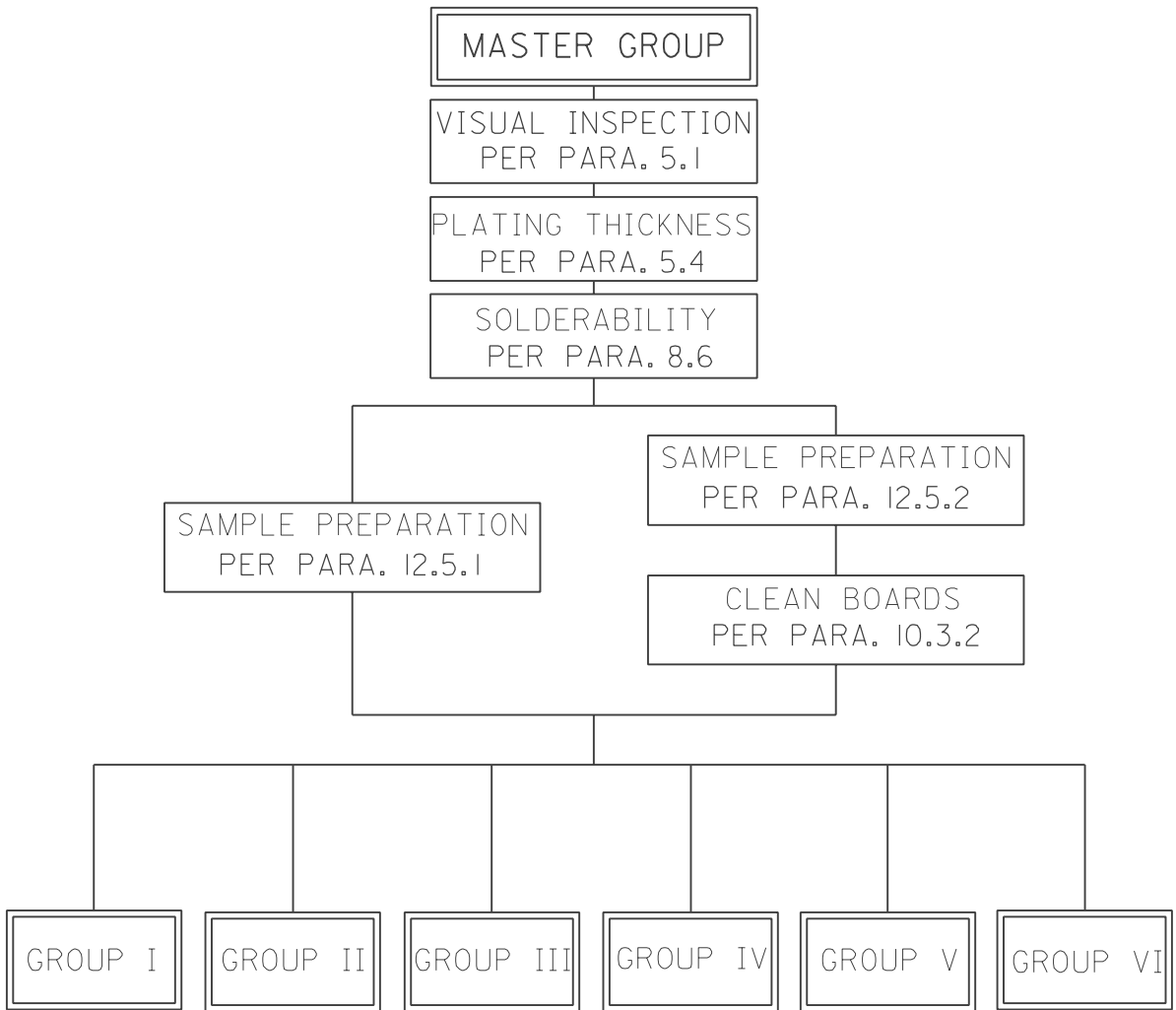


FIGURE 9

DRWG. NO. PS-79107

DRWG. NO. PS-79107

REV.
SHT.

FILE NAME
PS79107.S21



REVISE ONLY ON CAD SYSTEM

REV. A1
SHT. 21

THIS DRAWING CONTAINS INFORMATION THAT IS PROPRIETARY TO MOLEX INC. AND SHOULD NOT BE USED WITHOUT WRITTEN PERMISSION.



PS-79107

PRODUCT SPECIFICATION
2mm DUAL ROW VERTICAL RECEPTACLE ASSEMBLIES

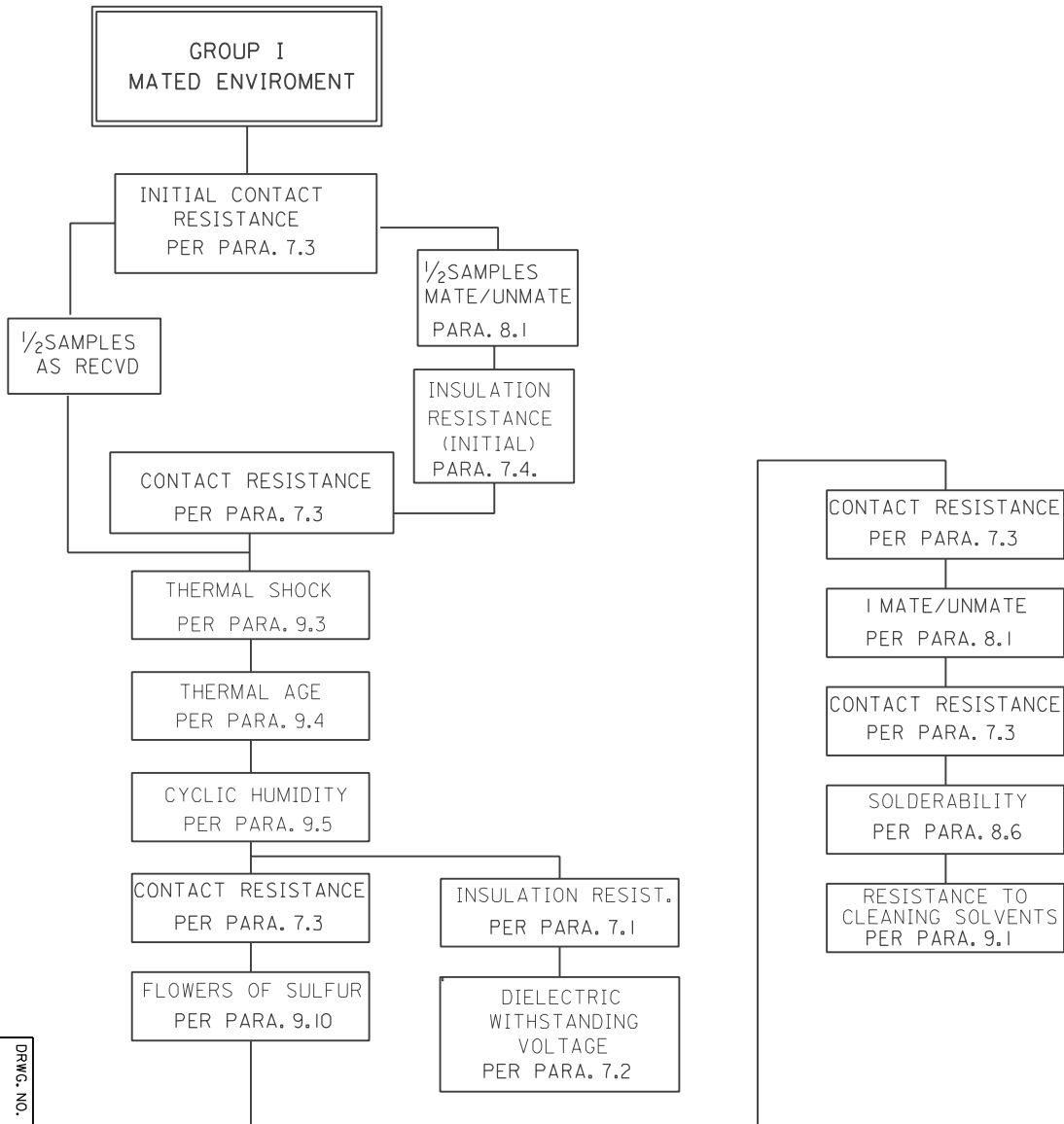


FIGURE 10

DRWG. NO. PS-79107

DRWG. NO. PS-79107

REV.

SHT.

FILE NAME
PS79107.S22



=



=

REVISE ONLY ON CAD SYSTEM

REV.

A I

THIS DRAWING CONTAINS INFORMATION THAT IS PROPRIETARY TO MOLEX INC. AND SHOULD NOT BE USED WITHOUT WRITTEN PERMISSION.

SHT.

22



PS-79107
PRODUCT SPECIFICATION
2mm DUAL ROW VERTICAL RECEPTACLE ASSEMBLIES

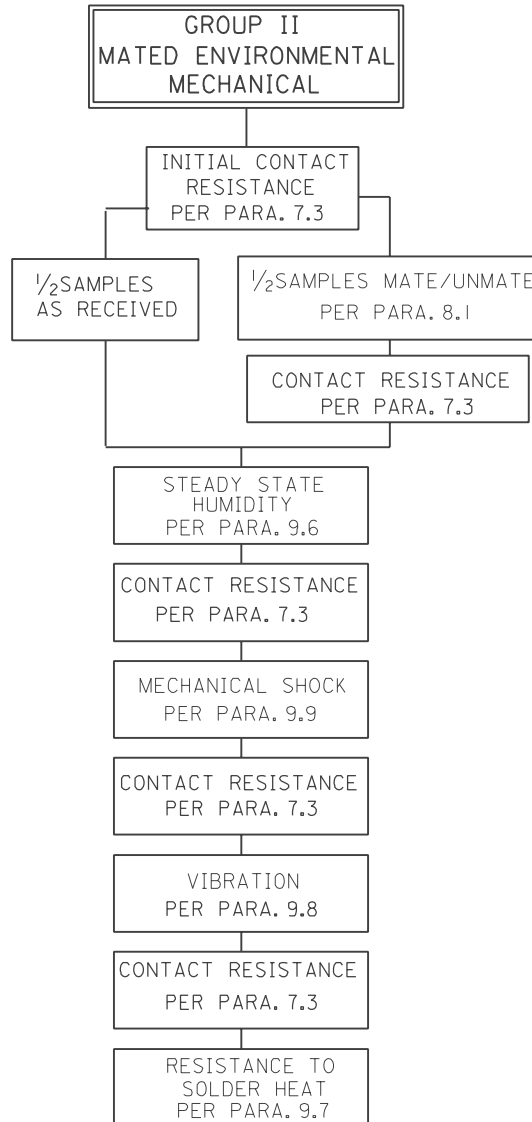


FIGURE II

DRWG. NO. PS-79107

DRWG. NO. PS-79107

REV.
SHT.

FILE NAME PS79107.S23



REVISE ONLY ON CAD SYSTEM

REV.	A1
SHT.	23

THIS DRAWING CONTAINS INFORMATION THAT IS PROPRIETARY TO MOLEX INC. AND SHOULD NOT BE USED WITHOUT WRITTEN PERMISSION.



PS-79107

PRODUCT SPECIFICATION
2mm DUAL ROW VERTICAL RECEPTACLE ASSEMBLIES

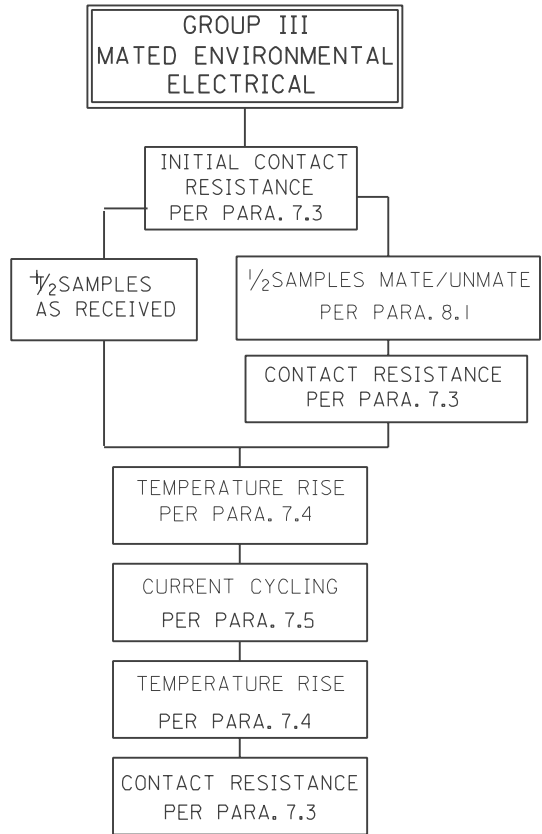


FIGURE 12

DRWG. NO. PS-79107

DRWG. NO. PS-79107

REV.
SHT.

FILE NAME PS79107.S24



REVISE ONLY ON CAD SYSTEM

REV.	A1
------	----

SHT.	24
------	----

THIS DRAWING CONTAINS INFORMATION THAT IS PROPRIETARY TO MOLEX INC. AND SHOULD NOT BE USED WITHOUT WRITTEN PERMISSION.

SHT.	24
------	----



PS-79107

PRODUCT SPECIFICATION
2mm DUAL ROW VERTICAL RECEPTACLE ASSEMBLIES

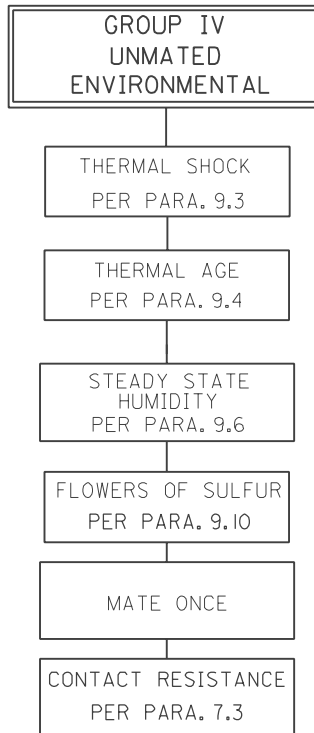


FIGURE 13

DRWG. NO.
PS-79107

DRWG. NO.
PS-79107

REV.
SHT.

FILE NAME
PS79107.S25



REVISE ONLY ON CAD SYSTEM

REV. A1

THIS DRAWING CONTAINS INFORMATION THAT IS PROPRIETARY TO MOLEX INC. AND SHOULD NOT BE USED WITHOUT WRITTEN PERMISSION.

SHT. 25



PS-79107
PRODUCT SPECIFICATION
2mm DUAL ROW VERTICAL RECEPTACLE ASSEMBLIES

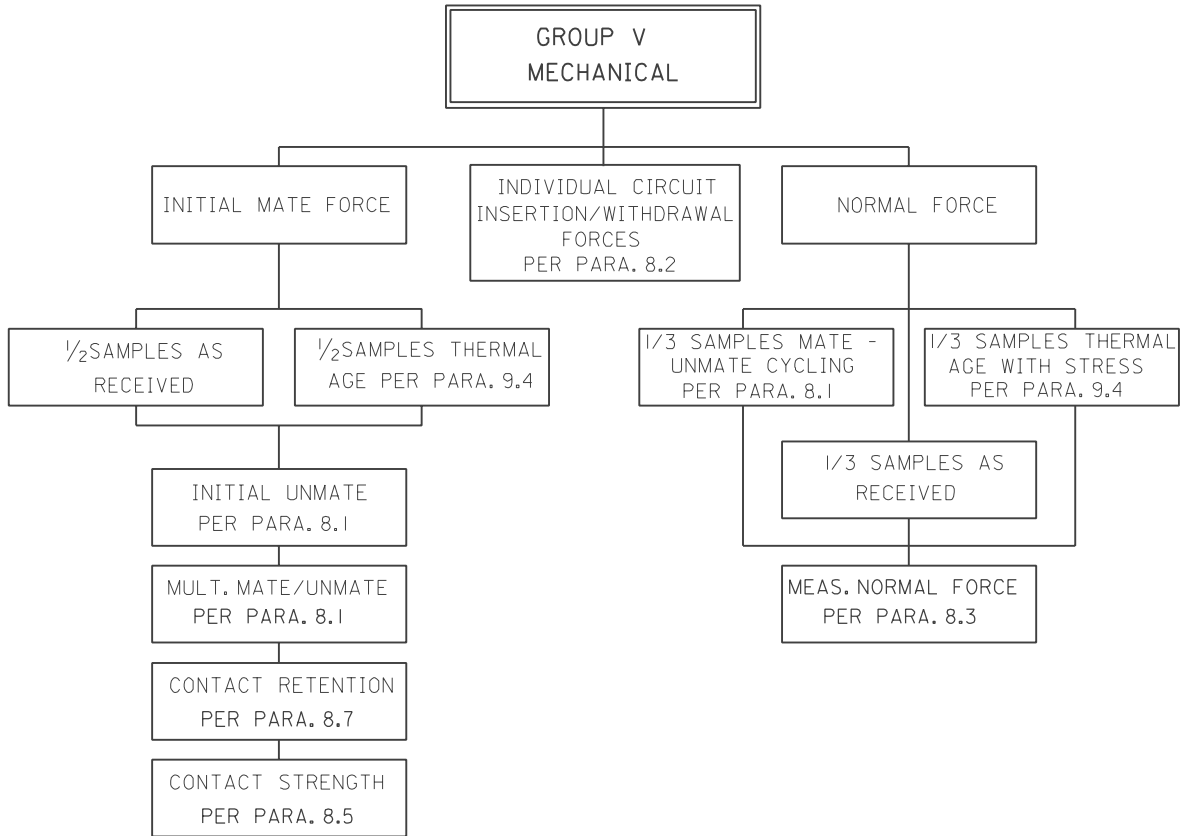


FIGURE 14

DRWG. NO.
PS-79107

REV.
SHT.

FILE NAME
PS79107.S26



=



=

REVISE ONLY ON CAD SYSTEM

REV. A1

THIS DRAWING CONTAINS INFORMATION THAT IS PROPRIETARY TO MOLEX INC. AND SHOULD NOT BE USED WITHOUT WRITTEN PERMISSION.

SHT. 26

DRWG. NO.
PS-79107



PS-79107
PRODUCT SPECIFICATION
2mm DUAL ROW VERTICAL RECEPTACLE ASSEMBLIES

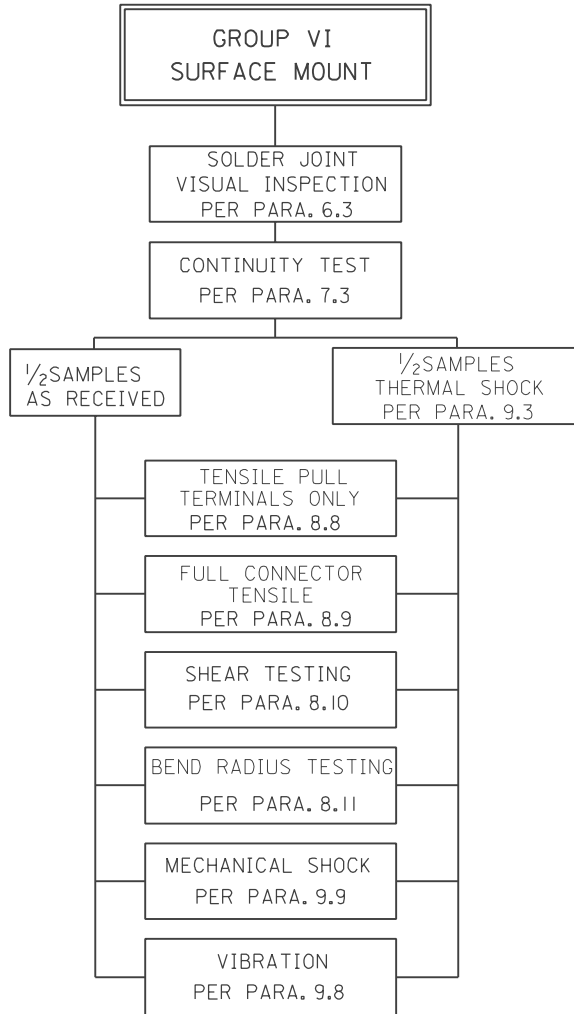


FIGURE 15

DRWG. NO.
PS-79107

DRWG. NO.
PS-79107

REV.
SHT.

FILE NAME
PS79107.S27



=



=

REVISE ONLY ON CAD SYSTEM

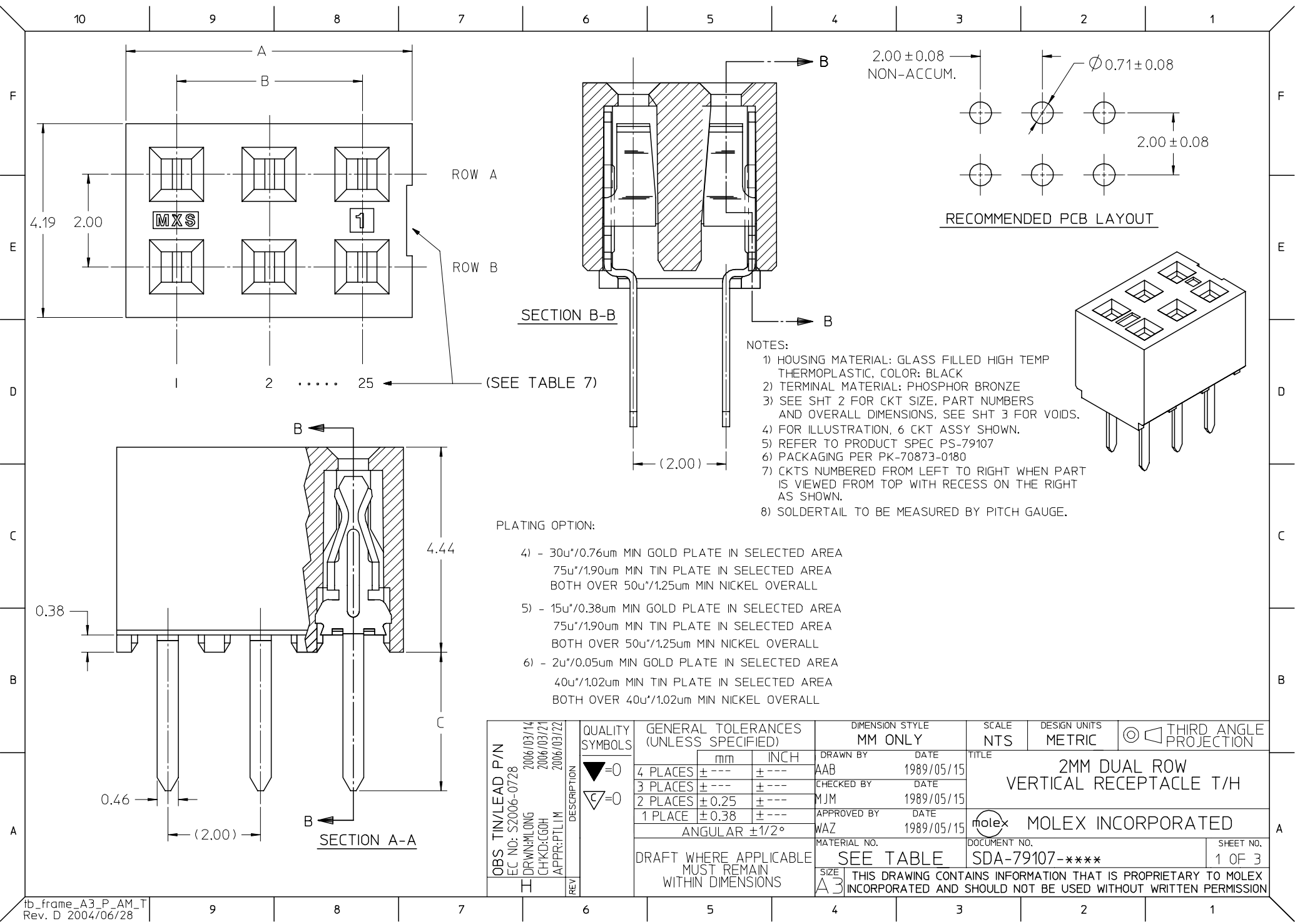
REV.

A I

SHT.

27

THIS DRAWING CONTAINS INFORMATION THAT IS PROPRIETARY TO MOLEX INC. AND SHOULD NOT BE USED WITHOUT WRITTEN PERMISSION.



NOTES:

- 1) HOUSING MATERIAL: GLASS FILLED HIGH TEMP THERMOPLASTIC, COLOR: BLACK
- 2) TERMINAL MATERIAL: PHOSPHOR BRONZE
- 3) SEE SHT 2 FOR CKT SIZE, PART NUMBERS AND OVERALL DIMENSIONS, SEE SHT 3 FOR VOIDS.
- 4) FOR ILLUSTRATION, 6 CKT ASSY SHOWN.
- 5) REFER TO PRODUCT SPEC PS-79107
- 6) PACKAGING PER PK-70873-0180
- 7) CKTS NUMBERED FROM LEFT TO RIGHT WHEN PART IS VIEWED FROM TOP WITH RECESS ON THE RIGHT AS SHOWN.
- 8) SOLDDERTAIL TO BE MEASURED BY PITCH GAUGE.

- PLATING OPTION:
- 4) - 30u"/0.76um MIN GOLD PLATE IN SELECTED AREA
75u"/1.90um MIN TIN PLATE IN SELECTED AREA
BOTH OVER 50u"/1.25um MIN NICKEL OVERALL
 - 5) - 15u"/0.38um MIN GOLD PLATE IN SELECTED AREA
75u"/1.90um MIN TIN PLATE IN SELECTED AREA
BOTH OVER 50u"/1.25um MIN NICKEL OVERALL
 - 6) - 2u"/0.05um MIN GOLD PLATE IN SELECTED AREA
40u"/1.02um MIN TIN PLATE IN SELECTED AREA
BOTH OVER 40u"/1.02um MIN NICKEL OVERALL

OBS TIN/LEAD P/N EC NO: S2006-0728 DRWN:MLONG CHKD:CGOH APPR:PTLIM	QUALITY SYMBOLS ▽=0 ∇=0	GENERAL TOLERANCES (UNLESS SPECIFIED)		DIMENSION STYLE MM ONLY		SCALE NTS	DESIGN UNITS METRIC	THIRD ANGLE PROJECTION			
		4 PLACES ± --- ± ---	3 PLACES ± --- ± ---	2 PLACES ± 0.25 ± ---	1 PLACE ± 0.38 ± ---	DRAWN BY AAB		DATE 1989/05/15		TITLE 2MM DUAL ROW VERTICAL RECEPTACLE T/H	
		ANGULAR ±1/2°				CHECKED BY MJM		DATE 1989/05/15			
		DRAFT WHERE APPLICABLE MUST REMAIN WITHIN DIMENSIONS				APPROVED BY WAZ		DATE 1989/05/15		MATERIAL NO. SEE TABLE	

F

E

D

C

B

A

CKT SIZE	DIM 'A'	DIM 'B'	P.C.TAIL DIMENSION 'C' = 3.00			P.C.TAIL DIMENSION 'C' = 1.91		
			PLATING OPTION 5	PLATING OPTION 4	PLATING OPTION 6	PLATING OPTION 5	PLATING OPTION 4	PLATING OPTION 6
			ITEM NO.	ITEM NO.	ITEM NO.	ITEM NO.	ITEM NO.	ITEM NO.
04	(4.19)	(2.00)	79107-7001	79107-7051	X 79107-7126	79107-7201	79107-7251	X 79107-7326
06	(6.19)	(4.00)	79107-7002	79107-7052	X 79107-7127	79107-7202	79107-7252	X 79107-7327
08	(8.19)	(6.00)	79107-7003	79107-7053	X 79107-7128	79107-7203	79107-7253	X 79107-7328
10	(10.19)	(8.00)	79107-7004	79107-7054	X 79107-7129	79107-7204	79107-7254	X 79107-7329
12	(12.19)	(10.00)	79107-7005	79107-7055	X 79107-7130	79107-7205	79107-7255	X 79107-7330
14	(14.19)	(12.00)	79107-7006	79107-7056	X 79107-7131	79107-7206	79107-7256	X 79107-7331
16	(16.19)	(14.00)	79107-7007	79107-7057	X 79107-7132	79107-7207	79107-7257	X 79107-7332
18	(18.19)	(16.00)	79107-7008	79107-7058	X 79107-7133	79107-7208	79107-7258	X 79107-7333
20	(20.19)	(18.00)	79107-7009	79107-7059	X 79107-7134	79107-7209	79107-7259	X 79107-7334
22	(22.19)	(20.00)	79107-7010	79107-7060	X 79107-7135	79107-7210	79107-7260	X 79107-7335
24	(24.19)	(22.00)	79107-7011	79107-7061	X 79107-7136	79107-7211	79107-7261	X 79107-7336
26	(26.19)	(24.00)	79107-7012	79107-7062	X 79107-7137	79107-7212	79107-7262	X 79107-7337
28	(28.19)	(26.00)	79107-7013	79107-7063	X 79107-7138	79107-7213	79107-7263	X 79107-7338
30	(30.19)	(28.00)	79107-7014	79107-7064	X 79107-7139	79107-7214	79107-7264	X 79107-7339
32	(32.19)	(30.00)	79107-7015	79107-7065	X 79107-7140	79107-7215	79107-7265	X 79107-7340
34	(34.19)	(32.00)	79107-7016	79107-7066	X 79107-7141	79107-7216	79107-7266	X 79107-7341
36	(36.19)	(34.00)	79107-7017	79107-7067	X 79107-7142	79107-7217	79107-7267	X 79107-7342
38	(38.19)	(36.00)	79107-7018	79107-7068	X 79107-7143	79107-7218	79107-7268	X 79107-7343
40	(40.19)	(38.00)	79107-7019	79107-7069	X 79107-7144	79107-7219	79107-7269	X 79107-7344
42	(42.19)	(40.00)	79107-7020	79107-7070	X 79107-7145	79107-7220	79107-7270	X 79107-7345
44	(44.19)	(42.00)	79107-7021	79107-7071	X 79107-7146	79107-7221	79107-7271	X 79107-7346
46	(46.19)	(44.00)	79107-7022	79107-7072	X 79107-7147	79107-7222	79107-7272	X 79107-7347
48	(48.19)	(46.00)	79107-7023	79107-7073	X 79107-7148	79107-7223	79107-7273	X 79107-7348
50	(50.19)	(48.00)	79107-7024	79107-7074	X 79107-7149	79107-7224	79107-7274	X 79107-7349

X - DENOTES THE ITEM IS NOT AVAILABLE CURRENTLY.

OBS TIN/LEAD P/N EC NO: S2006-0728 2006/03/14 DRWN:MLG 2006/03/21 CHKD:CGH APPR:PTLIM 2006/03/22	QUALITY SYMBOLS ▽=0 ▽=0	GENERAL TOLERANCES (UNLESS SPECIFIED)		DIMENSION STYLE MM ONLY		SCALE NTS	DESIGN UNITS METRIC	THIRD ANGLE PROJECTION				
				mm	INCH	DRAWN BY AAB	DATE 1989/05/15	TITLE 2MM DUAL ROW VERTICAL RECEPTACLE T/H				
				4 PLACES ± ---	± ---	3 PLACES ± ---	± ---	CHECKED BY MJM	DATE 1989/05/15	MOLEX INCORPORATED DOCUMENT NO. SDA-79107-**** SHEET NO. 2 OF 3		
				2 PLACES ± 0.25	± ---	1 PLACE ± 0.38	± ---	APPROVED BY WAZ	DATE 1989/05/15			
		ANGULAR ±1/2°		DRAFT WHERE APPLICABLE MUST REMAIN WITHIN DIMENSIONS		MATERIAL NO. SEE TABLE SIZE A3 THIS DRAWING CONTAINS INFORMATION THAT IS PROPRIETARY TO MOLEX INCORPORATED AND SHOULD NOT BE USED WITHOUT WRITTEN PERMISSION						

MOLDED VOID OPTION
ASSEMBLIES WITHOUT PEGS

CKT. SIZE	ASSEMBLY ITEM NO.	VOID LOCATION(S) SEE SHEET 1 FOR CONVENTION		PLATING OPTION	DIM. "A"	DIM. "B"	P.C. TAIL DIM. "C"
		ROW	CKT. NO.(s)				
24	79107-5101	ROW B	6	5	(24.19)	(22.00)	(3.00)
10	79107-5102	ROW A	5	5	(10.19)	(8.00)	(3.00)
26	79107-5103	ROW B	5	5	(26.19)	(24.00)	(3.00)

"X" - DENOTES THE ITEM IS NOT AVAILABLE CURRENTLY.

NOTES

1. TERMINALS WILL BE PRESENT IN VOIDED LOCATIONS HOWEVER, PIN WINDOWS WILL BE CLOSED.
2. VOIDS CANNOT BE PRESENT IN BOTH ROWS ON A CONNECTOR.

OBS TIN/LEAD P/N EC NO: S2006-0728 DRWN:MLONG CHKD:CGOH APPR:PTLIM	2006/03/14 2006/03/21 2006/03/22	QUALITY SYMBOLS ▽=0 ▽=0	GENERAL TOLERANCES (UNLESS SPECIFIED)		DIMENSION STYLE MM ONLY		SCALE NTS	DESIGN UNITS METRIC	THIRD ANGLE PROJECTION			
				mm	INCH	DRAWN BY AAB	DATE 1989/05/15	TITLE 2MM DUAL ROW VERTICAL RECEPTACLE T/H				
			4 PLACES	± ---	± ---	CHECKED BY MJM	DATE 1989/05/15					
			3 PLACES	± ---	± ---	APPROVED BY WAZ	DATE 1989/05/15	MOLEX INCORPORATED DOCUMENT NO. SDA-79107-**** SHEET NO. 3 OF 3				
2 PLACES	± 0.25	± ---	DRAFT WHERE APPLICABLE MUST REMAIN WITHIN DIMENSIONS		SEE TABLE							
1 PLACE	± 0.38	± ---			SIZE A3		THIS DRAWING CONTAINS INFORMATION THAT IS PROPRIETARY TO MOLEX INCORPORATED AND SHOULD NOT BE USED WITHOUT WRITTEN PERMISSION					
		ANGULAR ±1/2°										