

FEATURES AND SPECIFICATIONS

Features and Benefits

- Sizes 3 to 68 circuits
- Tested for insulation resistance
- Bulk cable available on 100, 300 and 500' reels
- To order notched bulk cable, jumpers cut to length or complete cable assemblies, contact Molex

Reference Information

UL File No.: E61522
 UL Style No.: 2651
 CSA File No.: LL61126
 Use With: [5360](#), 70121, 71891, 70625 and [90584](#)
 IDT connectors
 Designed In: Inches

Electrical

Voltage: 300V
 See Electrical Specifications Table
 on Page H-29 for More Information

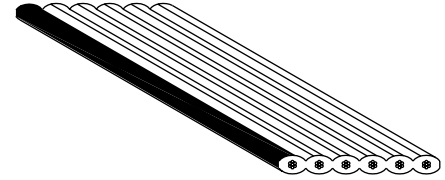
Physical

Flammability: VW-1
 Operating Temperature: -20 to +105°C
 Insulation: Gray PVC
 Edge Mark: Black



1.27mm (.050") Pitch Round Conductor Flat Cable

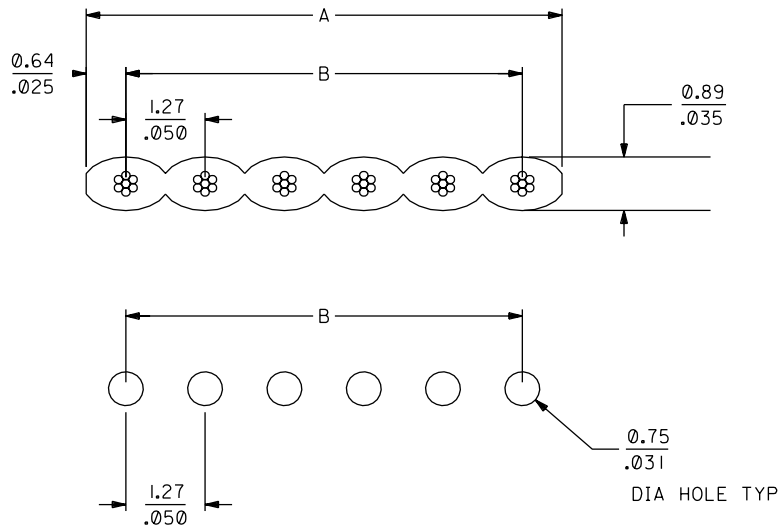
6800 28 AWG (7 x 36) Stranded, Tinned



Ribbon Cable Systems



CATALOG DRAWING (FOR REFERENCE ONLY)



RECOMMENDED PCB LAYOUT

ORDERING INFORMATION AND DIMENSIONS

Circuits*	Order No.			Dimension	
	100' Reel	300' Reel	500' Reel	A	B
3	82-28-5703			3.81 (.150)	2.54 (.100)
5	82-28-5705			6.35 (.250)	5.08 (.200)
6	82-28-5706	82-28-5906	82-28-5406	7.62 (.300)	6.35 (.250)
7	82-28-5707	82-28-5907		8.89 (.350)	7.62 (.300)
8		82-28-5908		10.16 (.400)	8.89 (.350)
9	82-28-5709	82-28-5909	82-28-5409	11.43 (.450)	10.16 (.400)
10	82-28-5710	82-28-5910	82-28-5410	12.70 (.500)	11.43 (.450)
12	82-28-5712	82-28-5912		15.24 (.600)	13.97 (.550)
14	82-28-5714	82-28-5914	82-28-5414	17.78 (.700)	16.51 (.650)
15	82-28-5715			19.05 (.750)	17.78 (.700)
16	82-28-5716	82-28-5916	82-28-5416	20.32 (.800)	19.05 (.750)
18	82-28-5718	82-28-5918		22.86 (.900)	21.59 (.850)
20	82-28-5720	82-28-5920	82-28-5420	25.40 (1.000)	24.13 (.950)
21	82-28-5721			26.67 (1.050)	25.40 (1.000)

Circuits*	Order No.			Dimension	
	100' Reel	300' Reel	500' Reel	A	B
22	82-28-5722		82-28-5422	27.94 (1.100)	26.67 (1.050)
24	82-28-5724	82-28-5924	82-28-5424	30.48 (1.200)	29.21 (1.150)
25	82-28-5725	82-28-5925	82-28-5425	31.75 (1.250)	30.48 (1.200)
26	82-28-5726	82-28-5926	82-28-5426	33.02 (1.300)	31.74 (1.250)
30	82-28-5730	82-28-5930	82-28-5430	38.10 (1.500)	36.83 (1.450)
34	82-28-5734	82-28-5934	82-28-5434	43.18 (1.700)	41.91 (1.650)
36	82-28-5736	82-28-5936	82-28-5436	45.72 (1.800)	44.45 (1.750)
37	82-28-5737	82-28-5937	82-28-5437	46.99 (1.850)	45.72 (1.800)
39	82-28-5739			49.53 (1.950)	48.26 (1.900)
40	82-28-5740	82-28-5940	82-28-5440	50.80 (2.000)	49.53 (1.950)
50	82-28-5750	82-28-5950	82-28-5450	63.50 (2.500)	62.23 (2.450)
60	82-28-5760	82-28-5960	82-28-5460	76.20 (3.000)	74.93 (2.950)
64	82-28-5764	82-28-5964	82-28-5464	81.28 (3.200)	80.01 (3.150)
68	82-28-5768	82-28-5968		86.36 (3.400)	85.09 (3.350)

* Other sizes available, contact Molex