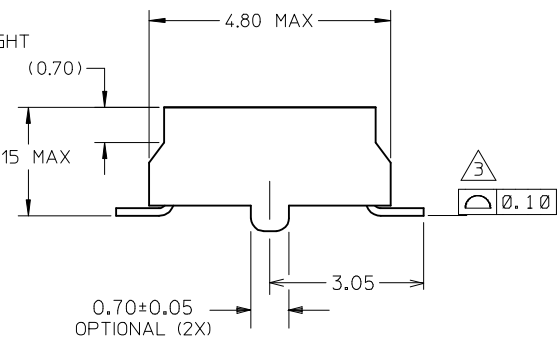


- NOTES:
- 12 CIRCUIT SIZE SHOWN FOR ILLUSTRATION ONLY. SEE CHART FOR AVAILABLE PART SIZES.
  - PLATING FINISH:
    - 3 & 8 - 0.76um/30uin MIN. GOLD IN CONTACT AREA  
1.90um/75uin MIN. TIN IN SOLDER TAIL AREA  
BOTH OVER 1.30um/50uin MIN. NICKEL OVERALL
    - 4 & 9 - 0.38um/15uin MIN. GOLD IN CONTACT AREA  
1.90um/75uin MIN. TIN IN SOLDER TAIL AREA  
BOTH OVER 1.30um/50uin MIN. NICKEL OVERALL
  - COPLANARITY OF SOLDER TAIL IS TO BE MEASURED BY RESTING THE PART ON A FLAT GAUGE SURFACE.
  - PRODUCT SPECIFICATION PS-87340 APPLIES.
  - THIS AREA OF PART TO BE HEAT STAKED TO RETAIN CONTACTS.
  - PART IS MATEABLE TO ALL MILLI-GRID HEADERS WITH MINIMUM PIN LENGTHS OF 1.90mm FOR TOP ENTRY.



PART NO. LEGEND

- 87340 - \* \* \* \* \*
- CIRCUIT SIZE
- PACKAGING & PLATING
- 3 - (TUBE WITH 0.76um MIN GOLD)
  - 4 - (TUBE WITH 0.38um MIN GOLD)
  - 8 - (T&R WITH 0.76um MIN GOLD)
  - 9 - (T&R WITH 0.38um MIN GOLD)

- 1 - WITHOUT LOCATING PEGS (HOUSING - BLACK)
- 2 - WITH LOCATING PEGS (HOUSING - BLACK)
- 5 - WITHOUT LOCATING PEGS (HOUSING - NATURAL)
- 6 - WITH LOCATING PEGS (HOUSING - NATURAL)

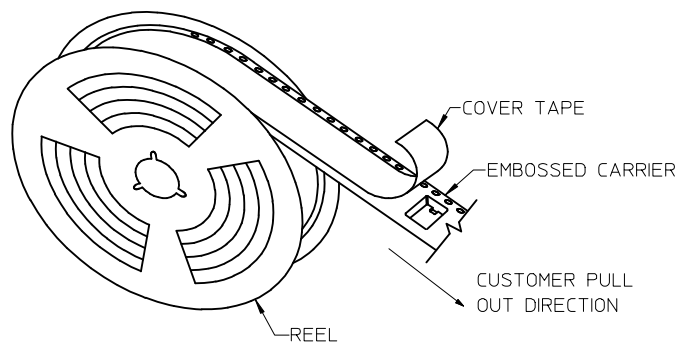
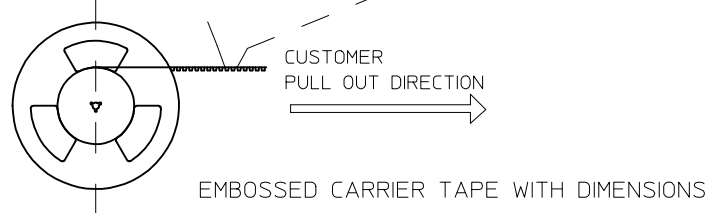
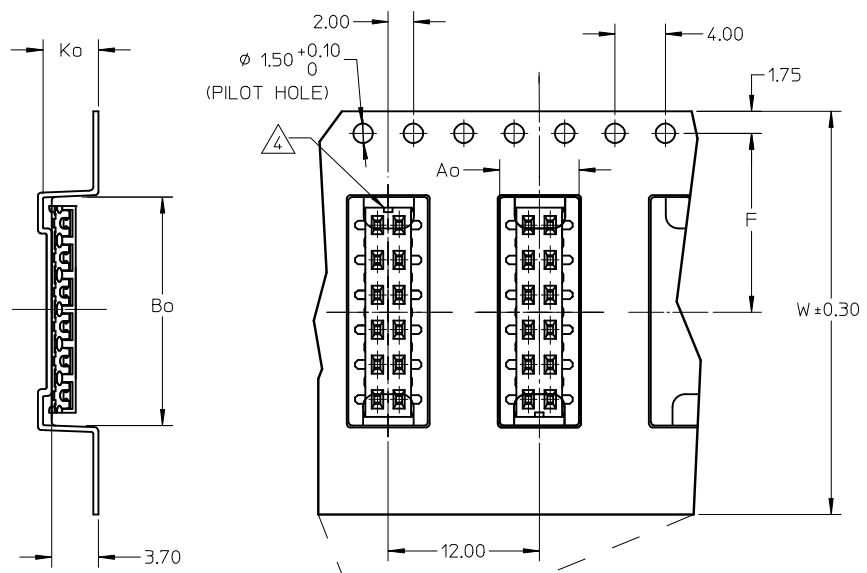
REVISE P/N LEGEND		QUALITY SYMBOLS
EC NO: S2009-0646	2009/03/11	
DRWN:SKANG	2009/03/11	▽=0
CHKD:ATSEE	2009/03/11	∇=0
APPR:MLONG	2009/03/12	
REV	DESCRIPTION	
L2		

GENERAL TOLERANCES (UNLESS SPECIFIED)	
mm	INCH
4 PLACES	± --- ± ---
3 PLACES	± --- ± ---
2 PLACES	± 0.20 ± ---
1 PLACE	± --- ± ---
ANGULAR ± 3 °	
DRAFT WHERE APPLICABLE MUST REMAIN WITHIN DIMENSIONS	

DIMENSION STYLE		SCALE	DESIGN UNITS	THIRD ANGLE PROJECTION
MM ONLY				
DRAWN BY	DATE	TITLE		
JKACHL I	1991/07/02	MGRID		
CHECKED BY	DATE	VLPR II, 2MM DUAL ROW		
JNG	1991/07/09	TOP ENTRY RECEPT., SMT		
APPROVED BY	DATE	MOLEX INCORPORATED		
YTYAP	1991/07/09	MOLEX INCORPORATED		
MATERIAL NO.	DOCUMENT NO.	SHEET NO.		
SEE TABLE	SD-87340-**-01	1 OF 2		

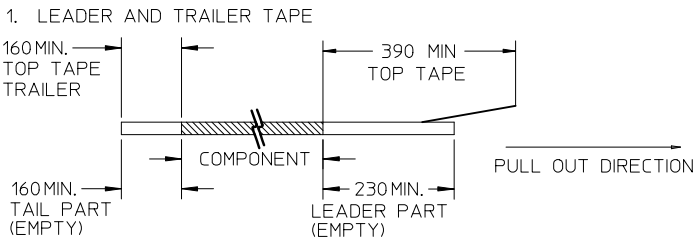
DRAWN BY		DATE	TITLE	
JKACHL I		1991/07/02	MGRID	
CHECKED BY		DATE	VLPR II, 2MM DUAL ROW	
JNG		1991/07/09	TOP ENTRY RECEPT., SMT	
APPROVED BY		DATE	MOLEX INCORPORATED	
YTYAP		1991/07/09	MOLEX INCORPORATED	
MATERIAL NO.	DOCUMENT NO.	SHEET NO.		
SEE TABLE	SD-87340-**-01	1 OF 2		

PART NO. IN TUBE	PART NO. TAPE/REEL	CKT SIZE	Ao	Bo	F	W	Ko
87340-1014	87340-1019	10	6.70	10.40	11.50	24.00	5.30
87340-1613	87340-1618	16	6.60	16.30	11.50	24.00	4.40
87340-1424	87340-1429	14	6.60	14.40	11.50	24.00	4.40

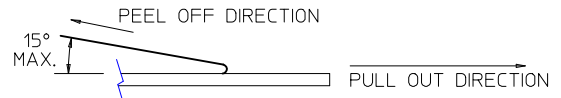


TAPE AND REEL ASSEMBLY SHOWN IS FOR ILLUSTRATION ONLY.

NOTES:



2. PEELING OFF FORCE OF THE TOP TAPE: 20-80gf. (PEELING DIRECTION AS SHOWN IN FOLLOWING FIGURE)



3. PACKAGING STANDARD IS AS PER EIA-481.

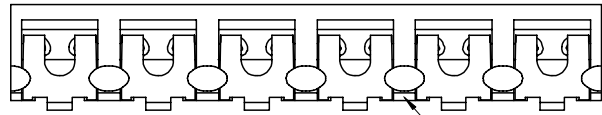
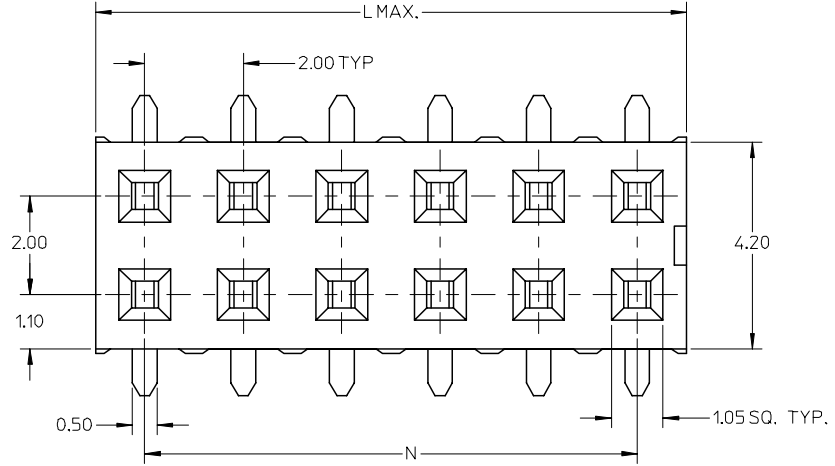
4. NO FIX ORIENTATION OF ASSEMBLY PART IN T&R.

5. TAPE & REEL QUANTITY : 1000 PCS / REEL

<b>REVISE P/N LEGEND</b> EC NO: S2009-0646 DRWN:SKANG 2009/03/11 CHKD:ATSEE 2009/03/11 APPR:MLONG 2009/03/12	QUALITY SYMBOLS	GENERAL TOLERANCES (UNLESS SPECIFIED)		DIMENSION STYLE	SCALE	DESIGN UNITS	THIRD ANGLE PROJECTION	
	$\nabla=0$ $\square=0$	mm	INCH	MM ONLY	NTS	METRIC		
		4 PLACES	± ---	± ---	DRAWN BY	DATE	TITLE	
		3 PLACES	± ---	± ---	CHECKED BY	DATE		
	2 PLACES	± 0.20	± ---	JNG	1991/07/09			
	1 PLACE	± ---	± ---	APPROVED BY	DATE			
		ANGULAR ± 3 °		YTYAP	1991/07/09			
		DRAFT WHERE APPLICABLE MUST REMAIN WITHIN DIMENSIONS		MATERIAL NO.	DOCUMENT NO.			
		SIZE	SEE TABLE		MOLEX INCORPORATED			
		A3	THIS DRAWING CONTAINS INFORMATION THAT IS PROPRIETARY TO MOLEX INCORPORATED AND SHOULD NOT BE USED WITHOUT WRITTEN PERMISSION		MGRID VLPR II, 2MM DUAL ROW TOP ENTRY RECEPT., SMT			
					SD-87340-**-01			
					2 OF 2			

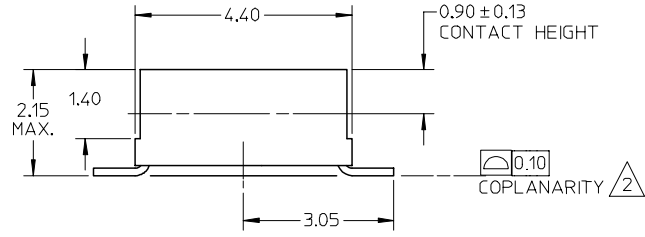
10 9 8 7 6 5 4 3 2 1

PART NO. IN TUBE (REF ONLY) (SEE DRAWING SD-87340-**01)	PART NO. IN TAPE/REEL	CKT. SIZE	DIM. N	DIM. L
87340-1213	87340-1233	12	10.00	12.00



NOTES:

- 12 CIRCUIT SIZE SHOWN FOR ILLUSTRATION ONLY. SEE CHART FOR AVAILABLE PART SIZES IN TAPE & REEL.
- PLATING FINISH :  
0.76um/30uin MIN. GOLD IN CONTACT AREA  
1.27um/50uin MIN. TIN IN SOLDER TAIL AREA  
BOTH OVER 1.90um/75uin MIN. NICKEL OVERALL.
- COPLANARITY OF SOLDER TAIL IS TO BE MEASURED BY RESTING THE PART ON A FLAT GAUGE SURFACE.
- PRODUCT SPECIFICATION PS-87340 APPLIES.
- THIS AREA OF PART TO BE HEAT STAKED TO RETAIN CONTACTS.
- PART IS MATEABLE TO ALL MILLI-GRID HEADERS WITH MINIMUM PIN LENGTHS OF 1.90mm FOR TOP ENTRY.

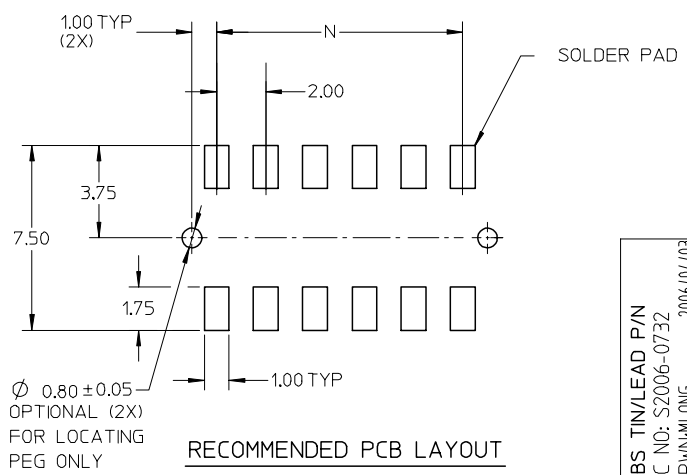


PART NO. LEGEND

87340 - \* \* \* 3

CIRCUIT SIZE

3 - WITHOUT LOCATING PEGS IN TAPE AND REEL



OBS TIN/LEAD P/N	EC NO: S2006-0732	2006/04/03
	DRWN:MLONG	2006/04/04
REV	CHKD:NAGESHKN	2006/04/04
	APPR:PTLIM	2006/04/05

QUALITY SYMBOLS	DESCRIPTION
▽=0	
▽=0	

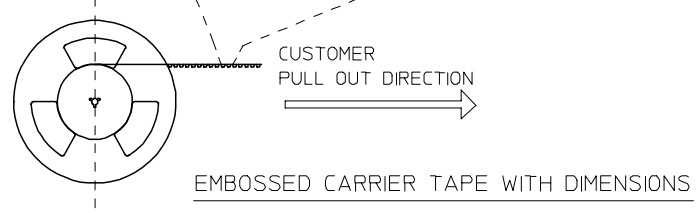
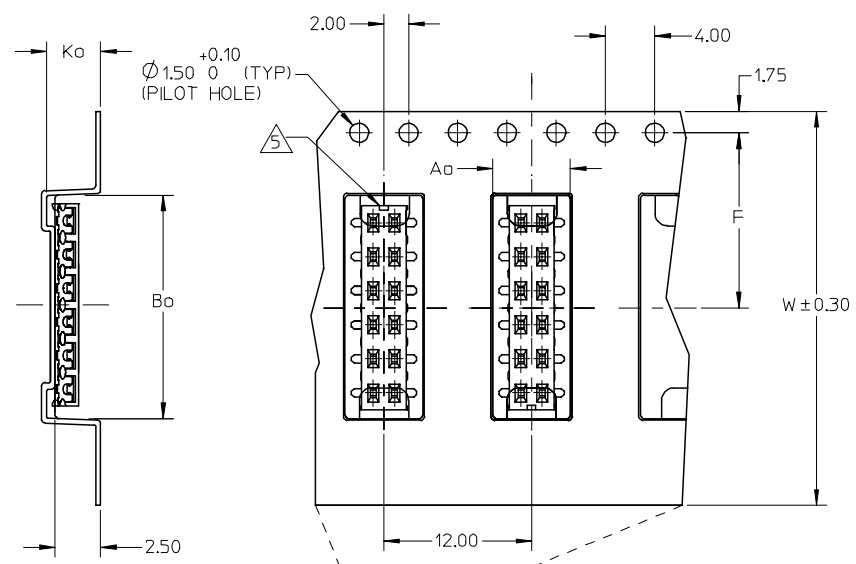
GENERAL TOLERANCES (UNLESS SPECIFIED)	
	mm INCH
4 PLACES	± --- ± ---
3 PLACES	± --- ± ---
2 PLACES	± 0.20 ± ---
1 PLACE	± --- ± ---
ANGULAR ± 3 °	
DRAFT WHERE APPLICABLE MUST REMAIN WITHIN DIMENSIONS	

DIMENSION STYLE		SCALE	DESIGN UNITS	THIRD ANGLE PROJECTION
MM ONLY		NTS	METRIC	
DRAWN BY	DATE	TITLE		
EP0H	1993/10/07	MGRID VLPR II, 2MM DUAL ROW TOP ENTRY RECEPT., SMT		
CHECKED BY	DATE			
EDPOH	1993/10/18	MOLEX INCORPORATED		
APPROVED BY	DATE			
RWONG	1993/10/18	SD-87340-**3*		
MATERIAL NO.	DOCUMENT NO.			
SEE TABLE		SHEET NO. 1 OF 2		

DRAWN BY		DATE	TITLE	
EP0H		1993/10/07	MGRID VLPR II, 2MM DUAL ROW TOP ENTRY RECEPT., SMT	
CHECKED BY		DATE		
EDPOH		1993/10/18	MOLEX INCORPORATED	
APPROVED BY		DATE		
RWONG		1993/10/18	SD-87340-**3*	
MATERIAL NO.		DOCUMENT NO.		
SEE TABLE			SHEET NO. 1 OF 2	

9 8 7 6 5 4 3 2 1

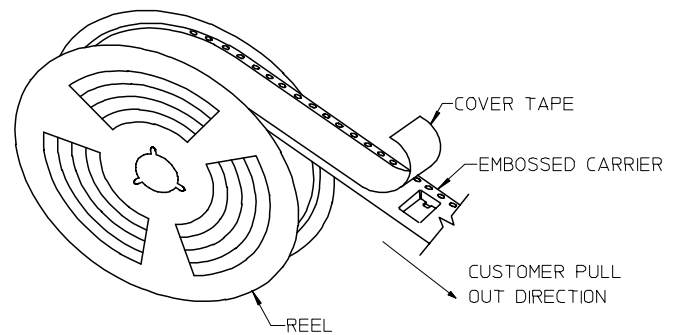
PART NO. TAPE/REEL	CKT SIZE	Ao	Bo	F	W	Ko
87340-1233	12	6.65	12.50	11.50	24.00	2.95



NOTES:

- LEADER AND TRAILER TAPE
- PEELING OFF FORCE OF THE TOP TAPE: 20-80gf.  
 (PEELING DIRECTION AS SHOWN IN FOLLOWING FIGURE)
- PACKAGING STANDARD IS AS PER EIA-481.
- TAPE & REEL QUANTITY = 1500 PCS/REEL
- NO FIX ORIENTATION OF ASSEMBLY PART IN T&R.

TAPE AND REEL ASSEMBLY SHOWN IS FOR ILLUSTRATION ONLY.



OBS TIN/LEAD P/N EC NO: S2006-0732 DRWN:MLONG CHKD:NAGESHKN APPR:PTLIM	QUALITY SYMBOLS ▽=0 ▽=0	GENERAL TOLERANCES (UNLESS SPECIFIED)		DIMENSION STYLE MM ONLY		SCALE NTS	DESIGN UNITS METRIC	THIRD ANGLE PROJECTION					
		mm	INCH	DRAWN BY EPOH	DATE 1993/10/07	TITLE MGRID VLPR II, 2MM DUAL ROW TOP ENTRY RECEPT., SMT							
REV C	DESCRIPTION	4 PLACES	± ---	± ---	CHECKED BY EDPOH	DATE 1993/10/18	MATERIAL NO. RWONG			DATE 1993/10/18	DOCUMENT NO. SD-87340-**3*		SHEET NO. 2 OF 2
		2 PLACES	± 0.20	± ---	APPROVED BY RWONG		MATERIAL NO. RWONG		DATE 1993/10/18		DOCUMENT NO. SD-87340-**3*		SHEET NO. 2 OF 2
DRAFT WHERE APPLICABLE MUST REMAIN WITHIN DIMENSIONS		ANGULAR ± 3 °		SEE TABLE		THIS DRAWING CONTAINS INFORMATION THAT IS PROPRIETARY TO MOLEX INCORPORATED AND SHOULD NOT BE USED WITHOUT WRITTEN PERMISSION							