

PART NO. IN TUBE	CKT. SIZE	DIM. B	DIM. A
87340-04**	4	2.00	4.00
87340-06**	6	4.00	6.00
87340-08**	8	6.00	8.00
87340-10**	10	8.00	10.00
87340-12**	12	10.00	12.00
87340-14**	14	12.00	14.00
87340-16**	16	14.00	16.00
87340-18**	18	16.00	18.00
87340-20**	20	18.00	20.00

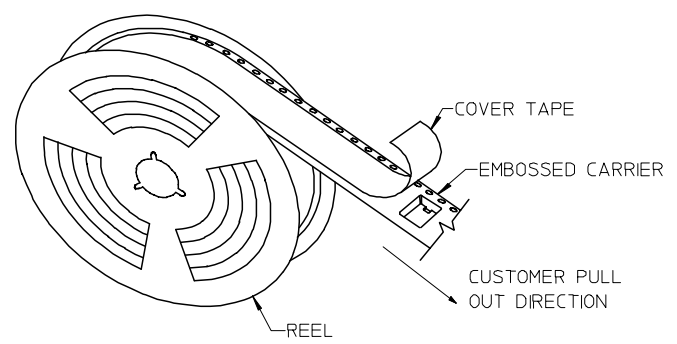
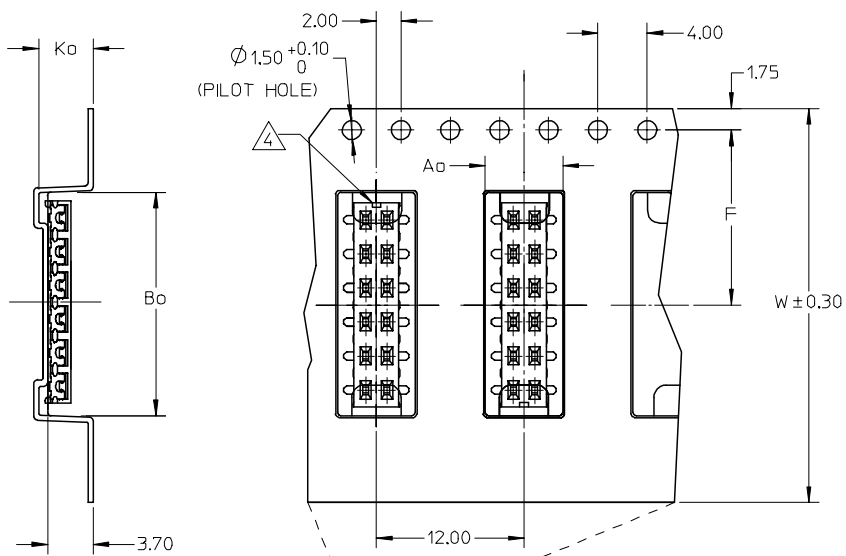
PDR#S-001668-00-00 EC NO: S2008-0262 DRWNS:KANG 2007/10/04 CHKD:ATSEE 2007/10/05 APPR:MLONG 2007/10/08	QUALITY SYMBOLS	GENERAL TOLERANCES (UNLESS SPECIFIED)	DIMENSION STYLE	SCALE	DESIGN UNITS	THIRD ANGLE PROJECTION
	▽=0	mm INCH	MM ONLY	NTS	METRIC	
	∇=0	4 PLACES ± --- ± ---	DRAWN BY	DATE	TITLE	
		3 PLACES ± --- ± ---	JKACHL I	1991/07/02		

2 PLACES ± 0.20 ± ---	APPROVED BY	DATE
1 PLACE ± --- ± ---	YTYAP	1991/07/09
ANGULAR ± 3 °	MATERIAL NO.	DOCUMENT NO.
DRAFT WHERE APPLICABLE MUST REMAIN WITHIN DIMENSIONS	SEE TABLE	SD-87340-**-01

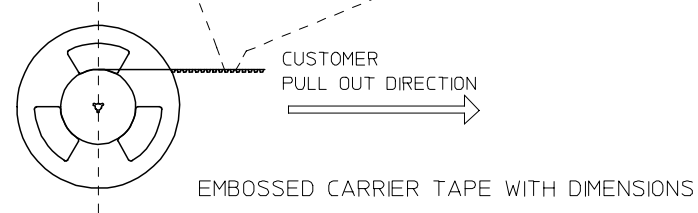
SIZE	THIS DRAWING CONTAINS INFORMATION THAT IS PROPRIETARY TO MOLEX INCORPORATED AND SHOULD NOT BE USED WITHOUT WRITTEN PERMISSION	
A3		
	SHEET NO.	1 OF 2

10 9 8 7 6 5 4 3 2 1

PART NO. IN TUBE	PART NO. TAPE/REEL	CKT SIZE	Ao	Bo	F	W	Ko
87340-1014	87340-1019	10	6.70	10.40	11.50	24.00	5.30
87340-1613	87340-1618	16	6.60	16.30	11.50	24.00	4.40
87340-1424	87340-1429	14	6.60	14.40	11.50	24.00	4.40

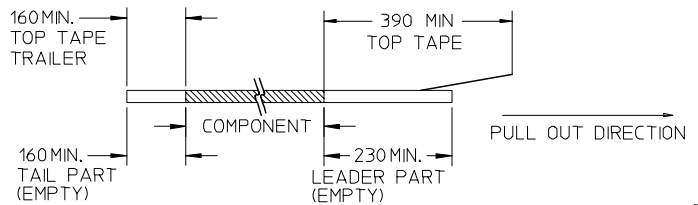


TAPE AND REEL ASSEMBLY SHOWN IS FOR ILLUSTRATION ONLY.

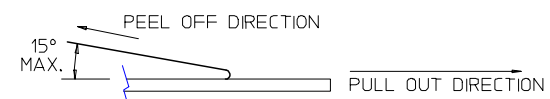


NOTES:

1. LEADER AND TRAILER TAPE



2. PEELING OFF FORCE OF THE TOP TAPE: 20-80gf.
(PEELING DIRECTION AS SHOWN IN FOLLOWING FIGURE)



3. PACKAGING STANDARD IS AS PER EIA-481.

4. NO FIX ORIENTATION OF ASSEMBLY PART IN T&R.

5. TAPE & REEL QUANTITY : 1000 PCS / REEL

PDR#S-001668-00-00	2007/10/04	DRWNS:KANG	2007/10/05	CHKD:ATSEE	2007/10/08	APPR:MLONG
EC NO: S2008-0262						
L1	REV	DESCRIPTION				

QUALITY SYMBOLS	▽=0	▽=0
-----------------	-----	-----

GENERAL TOLERANCES (UNLESS SPECIFIED)	mm	INCH
4 PLACES	± ---	± ---
3 PLACES	± ---	± ---
2 PLACES	± 0.20	± ---
1 PLACE	± ---	± ---
ANGULAR ± 3 °		
DRAFT WHERE APPLICABLE MUST REMAIN WITHIN DIMENSIONS		

DIMENSION STYLE		SCALE	DESIGN UNITS	THIRD ANGLE PROJECTION
MM ONLY		NTS	METRIC	
DRAWN BY	DATE	TITLE		
JKACHL I	1991/07/02	MGRID VLPR II, 2MM DUAL ROW TOP ENTRY RECEPT., SMT		
CHECKED BY	DATE			
JNG	1991/07/09	MOLEX INCORPORATED		
APPROVED BY	DATE			
YTYAP	1991/07/09	DOCUMENT NO.		
MATERIAL NO.		SD-87340-**01		SHEET NO.
SEE TABLE				2 OF 2

MATERIAL NO.				SD-87340-**01	SHEET NO.
SEE TABLE					2 OF 2
THIS DRAWING CONTAINS INFORMATION THAT IS PROPRIETARY TO MOLEX INCORPORATED AND SHOULD NOT BE USED WITHOUT WRITTEN PERMISSION					

9 8 7 6 5 4 3 2 1