

10 9 8 7 6 5 4 3 2 1

F

E

D

C

B

A

F

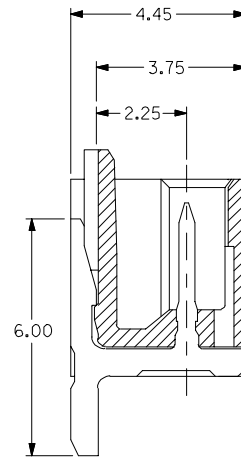
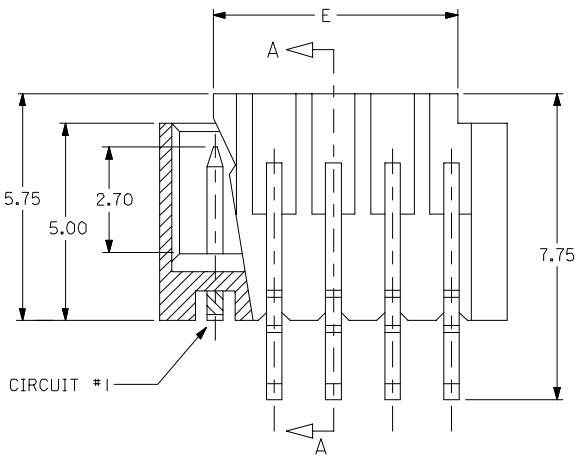
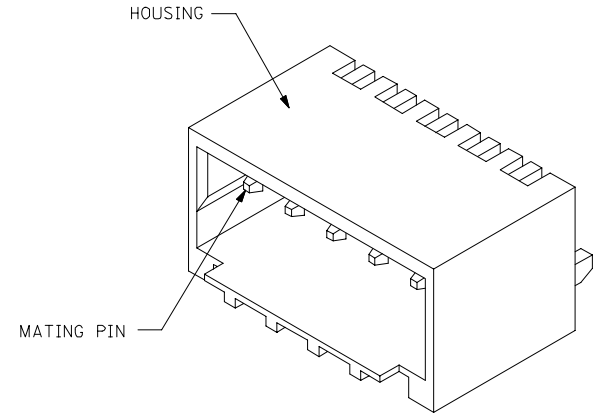
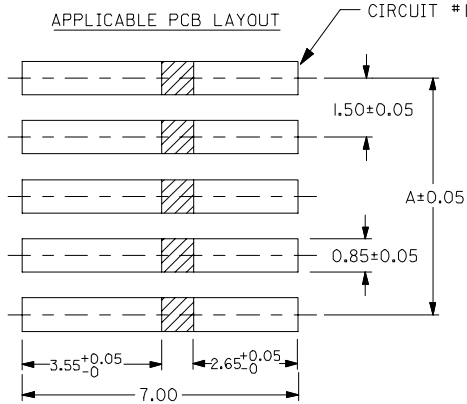
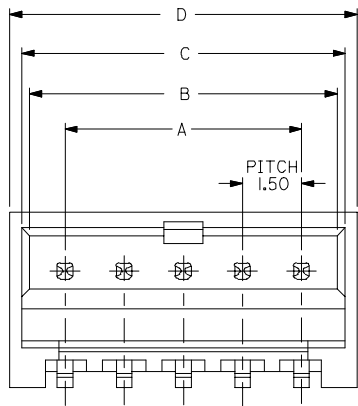
E

D

C

B

A



SECTION A-A

NOTES:

- MATERIALS:
HOUSING: GLASS-FILLED NYLON 46, UL RATED 94V-0, COLOR: BEIGE.
PINS: BRASS ALLOY, C26000
- PLATING: 2.54µM MIN. TIN/LEAD OR TIN OVER 1.27µM MIN. NICKEL.
- DRAWING SHOWS PLUG WITH 5 CIRCUITS.
- HEADER TO BE USED WITH CRIMP HOUSING, P/N 87439 AND CRIMP TERMINAL, P/N 87421

ADD ASSY P/N FOR LF EC NO: S2004-0871 DRWN:ANG 2004/06/30 CHKD:SHFONG 2004/07/01 APPR:SKTOH 2004/07/05	QUALITY SYMBOLS ▽=0 ▽=0	GENERAL TOLERANCES (UNLESS SPECIFIED)		DIMENSION STYLE MM ONLY	SCALE NTS	DESIGN UNITS METRIC	THIRD ANGLE PROJECTION			
				mm	INCH	DRAWN BY DATE TITLE				
		4 PLACES	± ---	± ---	KCL ING 1994/04/08 SALES DRAWING					
		3 PLACES	± ---	± .008	CHECKED BY DATE 150MM PITCH, W-T-B					
		2 PLACES	± 0.20	± ---	SKTOH 1994/04/21 HEADER, R/A, SMT					
		1 PLACE	± ---	± ---	APPROVED BY DATE					
		ANGULAR ± 3 °		ROYWONG 1994/04/24		MOLEX INCORPORATED				
		DRAFT WHERE APPLICABLE MUST REMAIN WITHIN DIMENSIONS		MATERIAL NO.		DOCUMENT NO.	SHEET NO.			
				SEE TABLE		SD-87438-***31	1 OF 3			
		THIS DRAWING CONTAINS INFORMATION THAT IS PROPRIETARY TO MOLEX INCORPORATED AND SHOULD NOT BE USED WITHOUT WRITTEN PERMISSION								

9 8 7 6 5 4 3 2 1

10 9 8 7 6 5 4 3 2 1

F

E

D

C

B

A

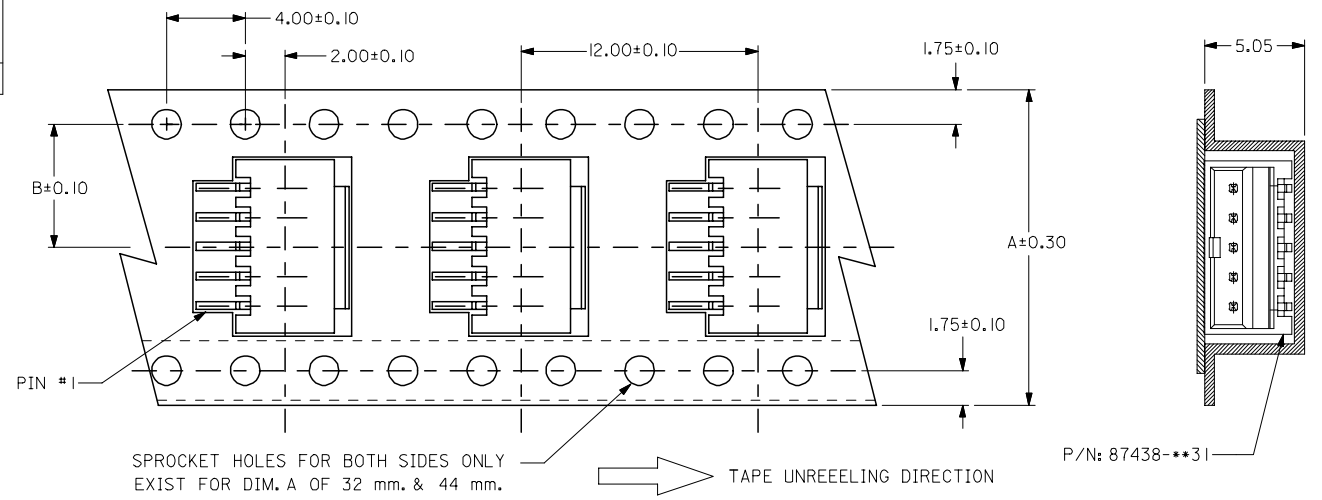
LEAD FREE TERMINAL P/N	HEADER IN TUBE PACKING	HEADER IN TAPE & REEL	TIN/LEAD TERMINAL P/N	HEADER IN TUBE PACKING	HEADER IN TAPE & REEL	CIRCUIT SIZE	A	B	C	D	E
87438-8084	87438-0242	87438-0243	87438-8082	87438-0232	87438-0233	2	1.50	3.30	3.70	4.30	1.70
	87438-0342	87438-0343		87438-0332	87438-0333	3	3.00	4.80	5.20	5.80	3.20
	87438-0442	87438-0443		87438-0432	87438-0433	4	4.50	6.30	6.70	7.30	4.70
	87438-0542	87438-0543		87438-0532	87438-0533	5	6.00	7.80	8.20	8.80	6.20
	87438-0642	87438-0643		87438-0632	87438-0633	6	7.50	9.30	9.70	10.30	7.70
	87438-0742	87438-0743		87438-0732	87438-0733	7	9.00	10.80	11.20	11.80	9.20
	87438-0842	87438-0843		87438-0832	87438-0833	8	10.50	12.30	12.70	13.30	10.70
	87438-0942	87438-0943		87438-0932	87438-0933	9	12.00	13.80	14.20	14.80	12.20
	87438-1042	87438-1043		87438-1032	87438-1033	10	13.50	15.30	15.70	16.30	13.70
	87438-1142	87438-1143		87438-1132	87438-1133	11	15.00	16.80	17.20	17.80	15.20
	87438-1242	87438-1243		87438-1232	87438-1233	12	16.50	18.30	18.70	19.30	16.70
	87438-1342	87438-1343		87438-1332	87438-1333	13	18.00	19.80	20.20	20.80	18.20
	87438-1442	87438-1443		87438-1432	87438-1433	14	19.50	21.30	21.70	22.30	19.70
	87438-1542	87438-1543		87438-1532	87438-1533	15	21.00	22.80	23.20	23.80	21.20
	LEAD FREE			TIN/LEAD							

ADD ASSY P/N FOR LF EC NO: S2004-0871 DRAWN:ANG 2004/06/30 CHKD:SHFONG 2004/07/01 APPR:SKTOH 2004/07/05	QUALITY SYMBOLS	GENERAL TOLERANCES (UNLESS SPECIFIED)	DIMENSION STYLE MM ONLY	SCALE NTS	DESIGN UNITS METRIC	THIRD ANGLE PROJECTION																		
	$\nabla = 0$ $\sphericalangle = 0$	<table border="1"> <tr> <th></th> <th>mm</th> <th>INCH</th> </tr> <tr> <td>4 PLACES</td> <td>\pm ---</td> <td>\pm ---</td> </tr> <tr> <td>3 PLACES</td> <td>\pm ---</td> <td>\pm.008</td> </tr> <tr> <td>2 PLACES</td> <td>\pm 0.20</td> <td>\pm ---</td> </tr> <tr> <td>1 PLACE</td> <td>\pm ---</td> <td>\pm ---</td> </tr> <tr> <td colspan="3">ANGULAR \pm 3 °</td> </tr> </table>		mm	INCH	4 PLACES	\pm ---	\pm ---	3 PLACES	\pm ---	\pm .008	2 PLACES	\pm 0.20	\pm ---	1 PLACE	\pm ---	\pm ---	ANGULAR \pm 3 °			DRAWN BY KCLING 1994/04/08 DATE CHECKED BY SKTOH 1994/04/21 DATE APPROVED BY ROYWONG 1994/04/21 DATE	TITLE	SALES DRAWING 1.50MM PTICH, W-T-B HEADER, R/A, SMT	
		mm	INCH																					
	4 PLACES	\pm ---	\pm ---																					
	3 PLACES	\pm ---	\pm .008																					
2 PLACES	\pm 0.20	\pm ---																						
1 PLACE	\pm ---	\pm ---																						
ANGULAR \pm 3 °																								
	DRAFT WHERE APPLICABLE MUST REMAIN WITHIN DIMENSIONS	SEE TABLE	DOCUMENT NO. SD-87438-***31	MOLEX INCORPORATED SHEET NO. 2 OF 3																				
			THIS DRAWING CONTAINS INFORMATION THAT IS PROPRIETARY TO MOLEX INCORPORATED AND SHOULD NOT BE USED WITHOUT WRITTEN PERMISSION																					

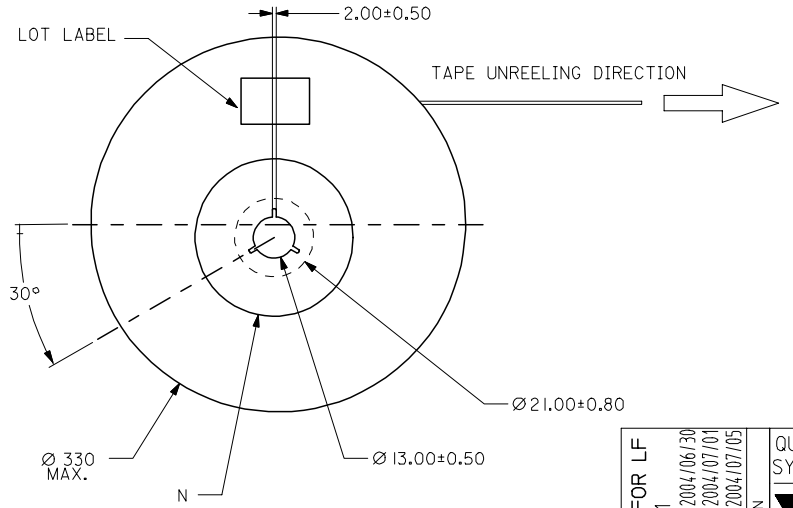
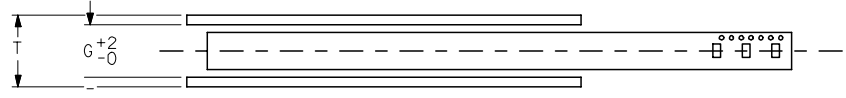
9 8 7 6 5 4 3 2 1

10	9	8	7	6	5	4	3	2	1
15	44	20.20	100	44.40	50.40				
11, 12, 13, 14	32	14.20	100	32.40	38.40				
7, 8, 9, 10	24	11.50	100	24.40	30.40				
2, 3, 4, 5, 6	16	7.50	100	16.40	22.40				
CIRCUIT SIZE	A	B	N	G	T MAX				

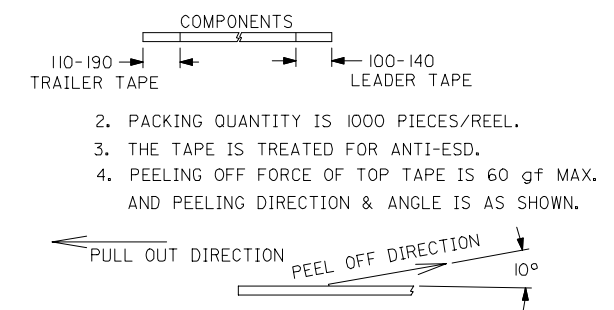
EMBOSSED CARRIER TAPE PACKING DETAILS



REEL DETAILS



NOTES:



ADD ASSY P/N FOR LF EC NO: S2004-0871 DRAWN: ANG 2004/06/30 CHKD: SHFONG 2004/07/01 APPR: SKTOH 2004/07/05	QUALITY SYMBOLS ▽=0 ▽=0	GENERAL TOLERANCES (UNLESS SPECIFIED)		DIMENSION STYLE MM ONLY	SCALE NTS	DESIGN UNITS METRIC	THIRD ANGLE PROJECTION		
		4 PLACES ± --- ± ---	3 PLACES ± --- ± .008	2 PLACES ± 0.20 ± ---	1 PLACE ± --- ± ---	DRAWN BY KCL ING	DATE 1994/04/08	TITLE SALES DRAWING 1.50MM PTICH, W-T-B HEADER, R/A, SMT	
		ANGULAR ± 3 °				CHECKED BY SKTOH	DATE 1994/04/21	MOLEX INCORPORATED DOCUMENT NO. SD-87438-***31	SHEET NO. 3 OF 3
		DRAFT WHERE APPLICABLE MUST REMAIN WITHIN DIMENSIONS				APPROVED BY ROYWONG	DATE 1994/04/24		