

Distributed by:

JAMECO[®]
ELECTRONICS

www.Jameco.com ♦ 1-800-831-4242

The content and copyrights of the attached
material are the property of its owner.

Jameco Part Number 803495



PRODUCT SPECIFICATION

5.0 PERFORMANCE

5.1 ELECTRICAL REQUIREMENTS

ITEM	DESCRIPTION	TEST CONDITION	REQUIREMENT
1	Capacitance	Measure between adjacent terminals	1.2 pf max
2	Insulation Resistance	Test between adjacent contact at 500 V DC for 1 minute, per (MIL-STD-1344 MTD 3001.1)	1000 Megaohms minimum
3	Dielectric Strength	Test between adjacent contact at 500VAC rms and 1 minute hold time.	No breakdown

5.2 MECHANICAL REQUIREMENTS

ITEM	DESCRIPTION	TEST CONDITION	REQUIREMENT
4	Pin Retention Force in Housing	Push pin axially from housing at a rate of 12.7mm/min (0.50 inch/min)	0.85 Kgf min

REVISION: B1	ECR/ECN INFORMATION: EC No: S2004-0868 DATE: 2004/07/20	TITLE: 2MM DUAL ROW OR SINGLE ROW (SMT/ VERTICAL/ RIGHT ANGLE) HEADER	SHEET No. 2 of 3
DOCUMENT NUMBER: PS-87761-100	CREATED / REVISED BY: AI TING	CHECKED BY: KCLING	APPROVED BY: SKTOH



PRODUCT SPECIFICATION

5.3 ENVIRONMENTAL REQUIREMENTS

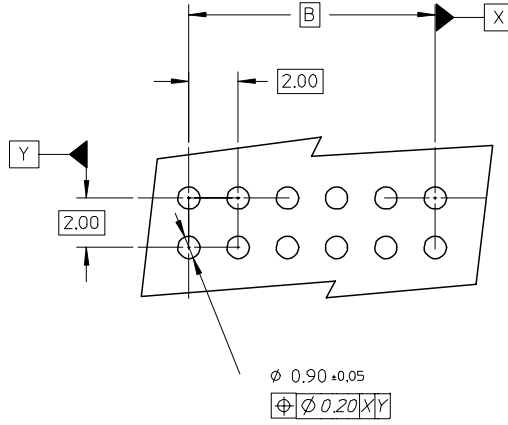
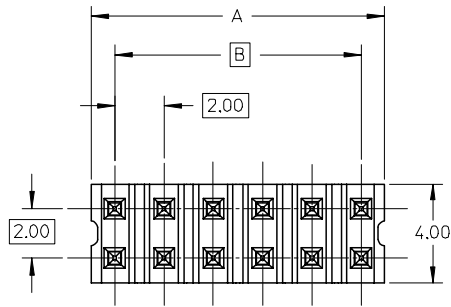
ITEM	DESCRIPTION	TEST CONDITION	REQUIREMENT
5	Temperature Rise	Apply 2 amps DC to the header and measure contact temperature rise for 48 hours	30°C maximum temperature rise above ambient.
6	Solderability	Solder Time: 5 ± 0.5 sec. Solder Temperature: 245 ±5 °C	Soldertail should have 95% continuous new solder coating coverage (Apply to non-kinked Soldertail only)
7	Resistance to Soldering Heat (Wave Soldering) For Series a)87760, b)87758, 87830, 87761 c) Other series	Sample mounted on PCB and subject to wave soldering, a)Temperature : 260 ±5 °C for 12 ± 2 Sec b)Temperature : 245 ±5 °C for 3Sec c) Temperature : 245 ±5 °C for 5Sec	Appearance : No Damage
8	Resistance to Solder Heat (Reflow) For Series 87759, 87762	Sample mounted on PCB and subject to reflow, Temperature : 245 ±5 °C for 10 ±2 Sec	Appearance : No Damage

6.0 Packaging

Product shall be packaged and protected against damage during handling, transportation and storage.

REVISION: B1	ECR/ECN INFORMATION: EC No: S2004-0868 DATE: 2004/07/20	TITLE: 2MM DUAL ROW OR SINGLE ROW (SMT/ VERTICAL/ RIGHT ANGLE) HEADER	SHEET No. 3 of 3
DOCUMENT NUMBER: PS-87761-100		CREATED / REVISED BY: AI TING	CHECKED BY: KCLING
		APPROVED BY: SKTOH	

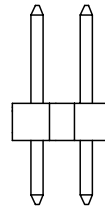
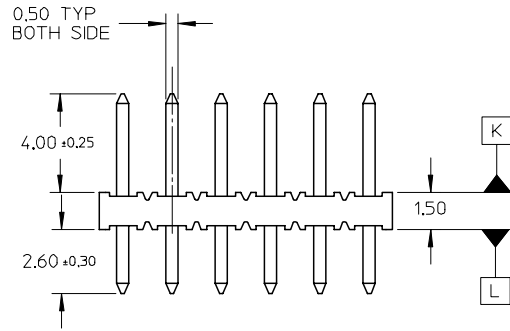
10 9 8 7 6 5 4 3 2 1



LEGEND
 87758- * * * *
 CKT SIZE (SEE SHT 2 TABLE) PLATING (SEE NOTE 2)

NOTES:

- MATERIAL:
 HOUSING: 30% G.F. NYLON 46, 94V-0, COLOR: BLACK
 PIN: 0.50mm SQ. PHOSPHOR BRONZE 510
- PLATING:
 **16 - 0.38um MIN GOLD IN CONTACT AREA.
 TIN IN SOLDER AREA, BOTH OVER NICKEL OVERALL.
 **17 - 0.76um MIN GOLD IN CONTACT AREA.
 TIN IN SOLDER AREA, BOTH OVER NICKEL OVERALL.
 **18 - 2.54um MIN TIN OVER NICKEL OVERALL.
- 12 CKT USED FOR ILLUSTRATION ONLY
- PACKED IN POCKET TRAY
- PIN PUSHOUT FORCE: 1KG MIN IN EITHER DIRECTION
- CKT 4 AND 6 IS CUT FROM CKT 8 AND 12 RESPECTIVELY.
 CKT 2 ARE CUT FROM ANY LARGER CKT SIZE.ROUGH EDGES ARE EXPECTED ALONG THE CUTTING EDGES.
- PRODUCT SPEC PS-87761-100 APPLIES.
- RECOMMENDED PCB THICKNESS IS 1.60±0.10



$\phi 0.71 \pm 0.07$
 $\phi \phi 0.30 \text{ (M) K}$



VIEW P

$\phi 0.71 \pm 0.07$
 $\phi \phi 0.30 \text{ (M) L}$



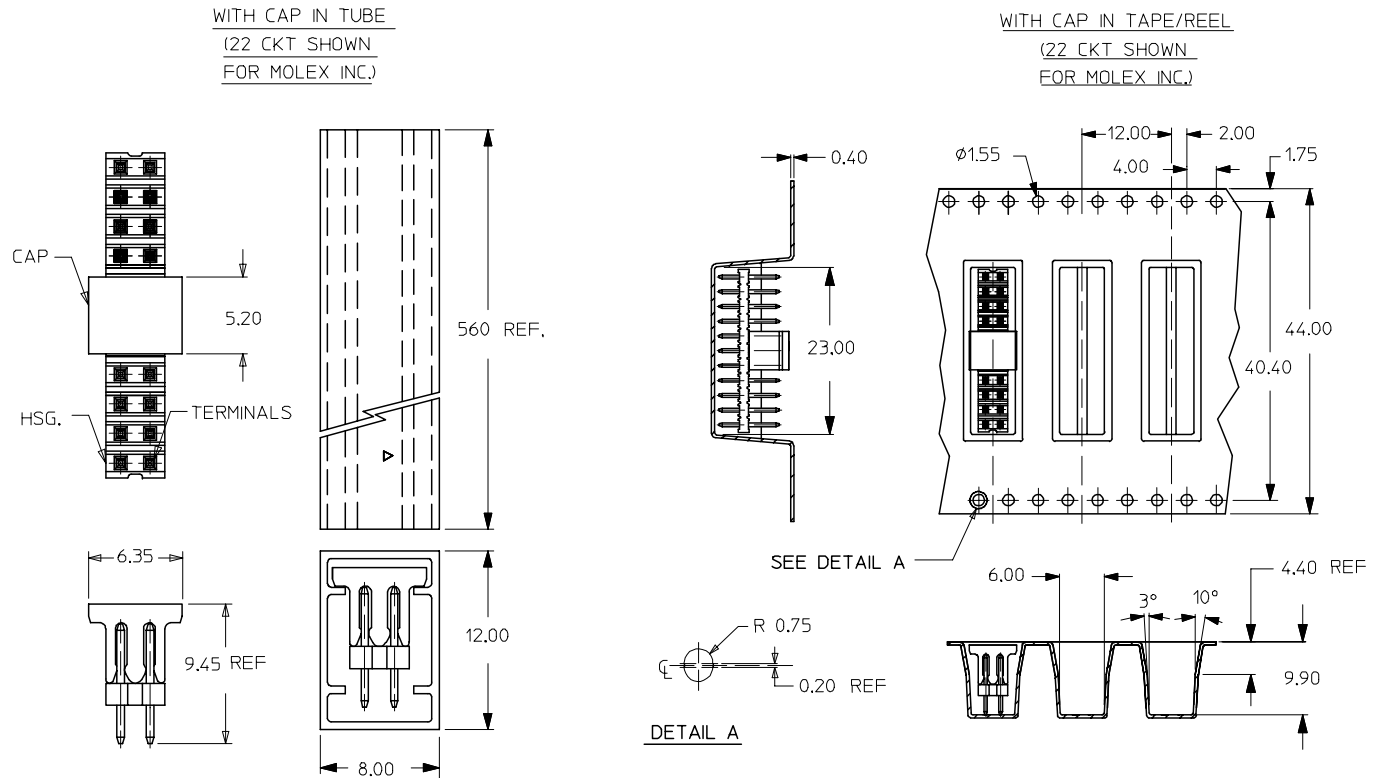
VIEW Q

EC NO: S2005-0715 2005/05/16 DRAWN:KCHO 2005/05/18 CHKD:PTLIM 2005/05/19 APPR:SCLOW	DESCRIPTION REV	QUALITY SYMBOLS $\nabla = 0$ $\sphericalangle = 0$	GENERAL TOLERANCES (UNLESS SPECIFIED)		DIMENSION STYLE MM ONLY	SCALE NTS	DESIGN UNITS METRIC	THIRD ANGLE PROJECTION	
		4 PLACES ± --- ± --- 3 PLACES ± --- ± --- 2 PLACES ± 0.20 ± --- 1 PLACE ± --- ± --- ANGULAR ± 3 °	mm INCH	DRAWN BY KSEE DATE 2003/10/30	TITLE SALES DRAWING 2MM DUAL ROW SINGLE WAFER, VERTICAL T/H HDR			MOLEX INCORPORATED	
DRAFT WHERE APPLICABLE MUST REMAIN WITHIN DIMENSIONS			SEE TABLE		DOCUMENT NO. SD-87758-107			THIS DRAWING CONTAINS INFORMATION THAT IS PROPRIETARY TO MOLEX INCORPORATED AND SHOULD NOT BE USED WITHOUT WRITTEN PERMISSION	

9 8 7 6 5 4 3 2 1

PART NUMBER	CKT SIZE	A	B
87758-02**	2	NA	NA
87758-04**	4	NA	2.00
87758-06**	6	NA	4.00
87758-08**	8	7.90	6.00
87758-10**	10	9.90	8.00
87758-12**	12	11.90	10.00
87758-14**	14	13.90	12.00
87758-16**	16	15.90	14.00
87758-18**	18	17.90	16.00
87758-20**	20	19.90	18.00
87758-22**	22	21.90	20.00
87758-24**	24	23.90	22.00
87758-26**	26	25.90	24.00
87758-28**	28	27.90	26.00
87758-30**	30	29.90	28.00
87758-32**	32	31.90	30.00
87758-34**	34	33.90	32.00
87758-36**	36	35.90	34.00
87758-38**	38	37.90	36.00
87758-40**	40	39.90	38.00
87758-42**	42	41.90	40.00
87758-44**	44	43.90	42.00
87758-46**	46	45.90	44.00
87758-48**	48	47.90	46.00
87758-50**	50	49.90	48.00

CKT SIZE	PART NO. WITH CAP IN TUBE	PART NO. WITH CAP IN TAPE/REEL	PLATING TYPE
8	87758-0814	87758-0815	**16
22	87758-5126	87758-5111	MOLEX INC.



REV	DESCRIPTION	QUALITY SYMBOLS	GENERAL TOLERANCES (UNLESS SPECIFIED)		DIMENSION STYLE		SCALE	DESIGN UNITS	THIRD ANGLE PROJECTION
			mm	INCH	MM ONLY	NTS			
A2	EC NO: S2005-0715 2005/05/16 DRAWN:KCHO 2005/05/18 CHKD:PTLIM 2005/05/19 APPR:SCLOW	▽=0 ∇=0	4 PLACES	± ---	± ---	DRAWN BY	DATE	TITLE	SALES DRAWING 2MM DUAL ROW SINGLE WAFER, VERTICAL T/H HDR MOLEX INCORPORATED
			3 PLACES	± ---	± ---	KSEE	2003/10/30		
			2 PLACES	± 0.20	± ---	CHECKED BY	DATE		
			1 PLACE	± ---	± ---	KCLING	2004/01/05		
			ANGULAR ± 3°			APPROVED BY	DATE		
			DRAFT WHERE APPLICABLE MUST REMAIN WITHIN DIMENSIONS			SKTOH	2004/01/05		
			SIZE A3			MATERIAL NO.	DATE		
			SEE TABLE			DOCUMENT NO.	DATE		
						SD-87758-107	DATE		
						SHEET NO.			
						2 OF 2			