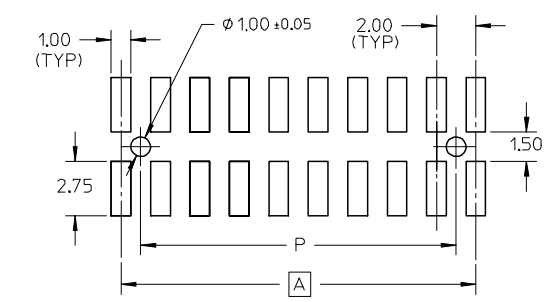
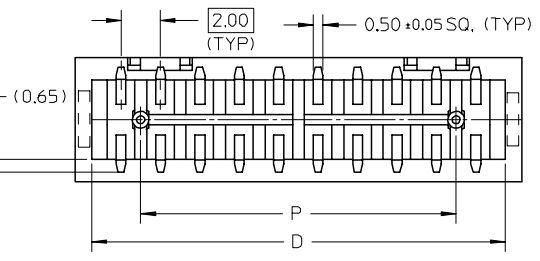


REF : ORIENTATION OF PART IN TUBE.  
(FOR THE REFERENCE OF PART/TUBE ASSEMBLY.)

PART NUMBER LEGEND :  
87832 - \* \* \* \*

PLATING OPTIONS  
 20 - 0.38um/15uin GOLD IN CONTACT AREA AND 1.88um/75uin MIN.TIN IN SOLDER TAIL AREA OVER 1.27um/50uin MIN. NICKEL OVERALL.  
 21 - 0.76um/30uin GOLD IN CONTACT AREA AND 1.88um/75uin MIN.TIN IN SOLDER TAIL AREA OVER 1.27um/50uin MIN. NICKEL OVERALL.



RECOMMENDED PCB PATTERN

LEG OPTION	P/N IN TUBE	CKT SIZE	DIMENSION					
			A	B	C	D	E	P
NO	87832-042*	4	2.00	4.85	6.65	5.00	---	---
YES	87832-062*	6	4.00	6.85	8.65	7.00	---	2.00
YES	87832-082*	8	6.00	8.85	10.65	9.00	---	4.00
YES	87832-102*	10	8.00	10.85	12.65	11.00	---	6.00
YES	87832-122*	12	10.00	12.85	14.65	13.00	---	8.00
YES	87832-142*	14	12.00	14.85	16.65	15.00	8.00	10.00
YES	87832-162*	16	14.00	16.85	18.65	17.00	10.00	12.00
YES	87832-182*	18	16.00	18.85	20.65	19.00	12.00	14.00
YES	87832-202*	20	18.00	20.85	22.65	21.00	14.00	16.00
YES	87832-222*	22	20.00	22.85	24.65	23.00	16.00	18.00
YES	87832-242*	24	22.00	24.85	26.65	25.00	18.00	20.00
YES	87832-262*	26	24.00	26.85	28.65	27.00	20.00	22.00
YES	87832-282*	28	26.00	28.85	30.65	29.00	22.00	24.00
YES	87832-302*	30	28.00	30.85	32.65	31.00	24.00	26.00
YES	87832-322*	32	30.00	32.85	34.65	33.00	26.00	28.00
YES	87832-342*	34	32.00	34.85	36.65	35.00	28.00	30.00
YES	87832-362*	36	34.00	36.85	38.65	37.00	30.00	32.00
YES	87832-382*	38	36.00	38.85	40.65	39.00	32.00	34.00
YES	87832-402*	40	38.00	40.85	42.65	41.00	34.00	36.00
YES	87832-422*	42	40.00	42.85	44.65	43.00	36.00	38.00
YES	87832-442*	44	42.00	44.85	46.65	45.00	38.00	40.00
YES	87832-462*	46	44.00	46.85	48.65	47.00	40.00	42.00
YES	87832-482*	48	46.00	48.85	50.65	49.00	42.00	44.00
YES	87832-502*	50	48.00	50.85	52.65	51.00	44.00	46.00

- NOTES:
- FOR ILLUSTRATION PURPOSES, 20 CIRCUIT SIZE WAFER IS SHOWN.
  - MATERIAL :  
HOUSING : 30% G.F., NYLON 46, UL94V-0, COLOR BLACK.  
PIN : 0.50MM SQ,PHOSPHOR BRONZE.
  - PRODUCT SPECIFICATION PS-87831-027 APPLIES.
  - COPLANARITY IS TO BE MEASURED BY RESTING THE SOLDER TAIL ON A GAUGE SURFACE.
  - BEND DEPRESSION ON SMT TAIL IS ACCEPTABLE SO LONG AS IT DOES NOT AFFECT THE OVERALL COPLANARITY OF THE TAIL.
  - NO CENTRE POLARIZATION SLOT FOR CKT SIZE 4 AND 6.
  - NO SIDE LOCKING SLOT FROM 4 TO 12 CKT SIZE.
  - CKT 4 & 6 HAS NO IDENTIFICATION TAG.

UPDATE PRODUCT SPEC EC NO: S2004-0805 DRAWN:ATSEE 2004/07/21 CHKD:PTLIM 2004/07/21 APPR:SKTOH 2004/07/22	QUALITY SYMBOLS ▽=0 ▽C=0	GENERAL TOLERANCES (UNLESS SPECIFIED)		DIMENSION STYLE MM ONLY		SCALE NTS	DESIGN UNITS METRIC	THIRD ANGLE PROJECTION		
				DRAWN BY ATSEE	DATE 2003/10/14	TITLE MILLIGRID SMT SHROUDED HEADER WITH LOCATING PEGS				
				CHECKED BY KCL ING	DATE 2003/11/07	MOLEX INCORPORATED				
				APPROVED BY SKTOH	DATE 2003/11/07	MATERIAL NO.		DOCUMENT NO. SD-87832-005	SHEET NO. 1 OF 1	
DRAFT WHERE APPLICABLE MUST REMAIN WITHIN DIMENSIONS		SEE TABLE		THIS DRAWING CONTAINS INFORMATION THAT IS PROPRIETARY TO MOLEX INCORPORATED AND SHOULD NOT BE USED WITHOUT WRITTEN PERMISSION						