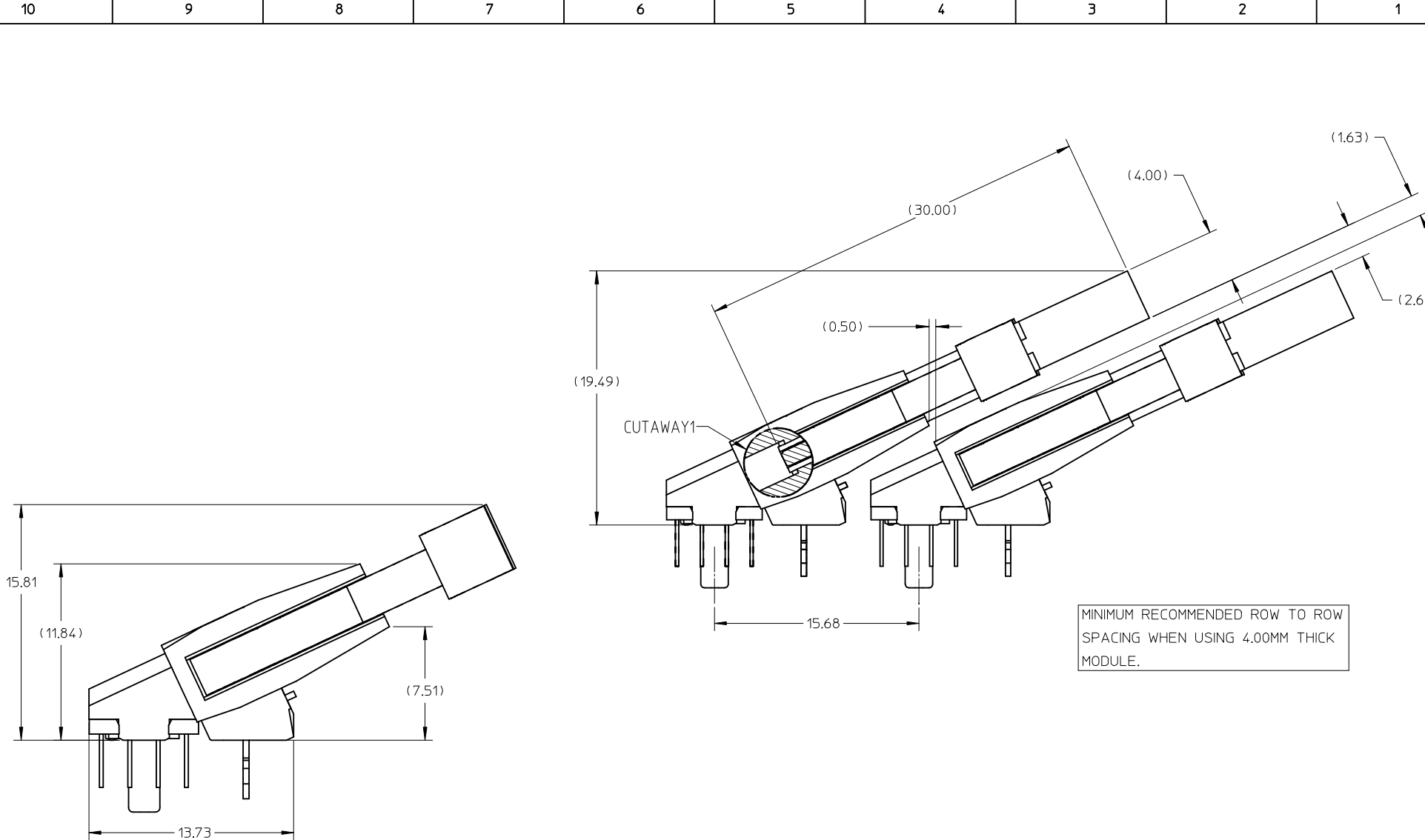


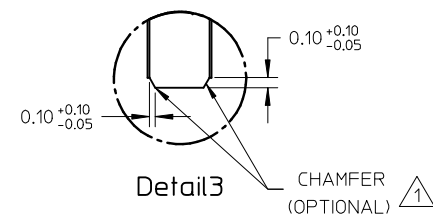
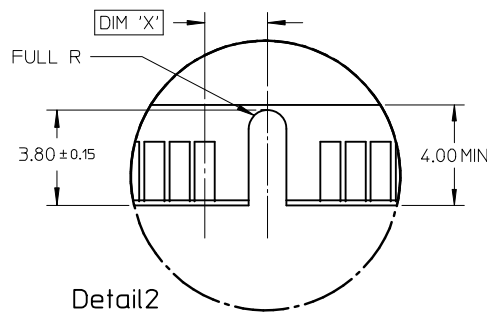
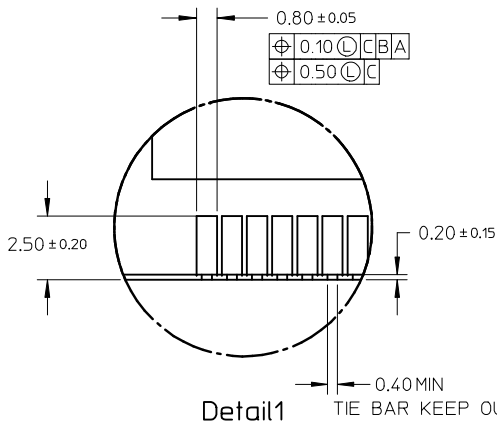
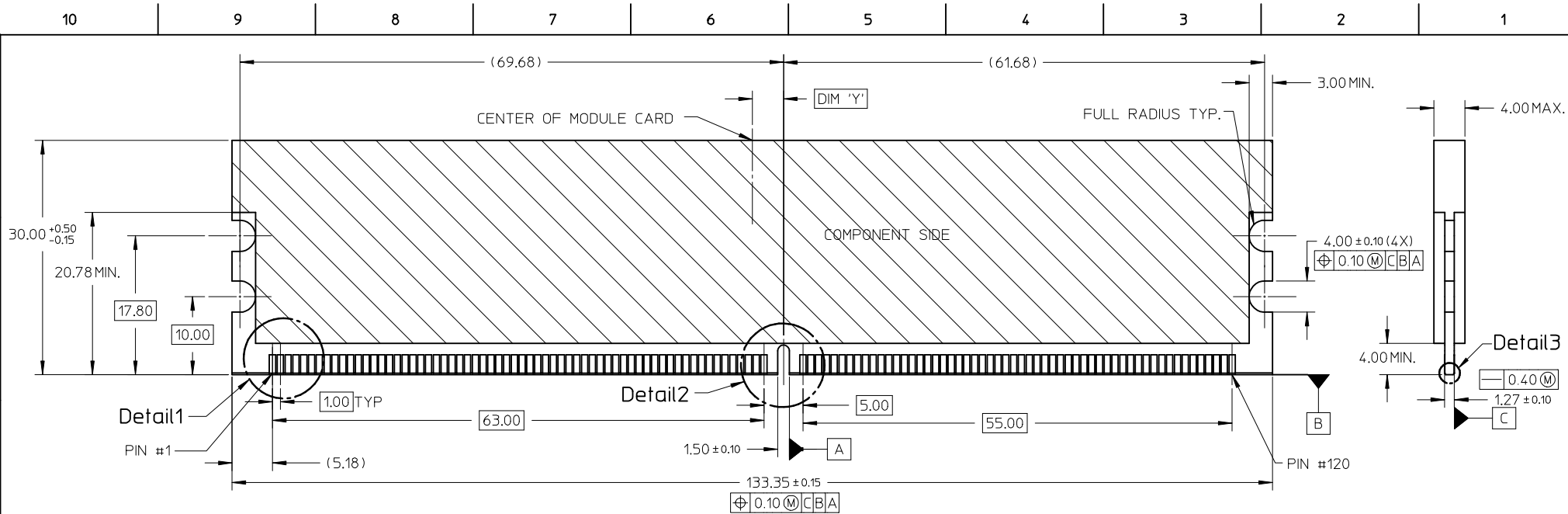
NOTES:

- MATERIAL : HOUSING & BASEPLATE.
 - LCP, GLASS FILLED, UL94-V0, BLACK.
 - LATCH.
 - HIGH TEMP. NYLON, GLASS FILLED, UL94-V0, NATURAL (OFF WHITE).
 - TERMINALS & FORKLICK - COPPER ALLOY.
 - PLATING : CONTACT AREA - SEE TABLE ON SHEET 5.
SOLDERTAIL - SEE TABLE ON SHEET 5.
 - CARD SLOT ACCEPTS 1.27+/-0.10MM MODULE THICKNESS (MEASURED OVER PC PADS).
 - REFER TO PRODUCT SPECIFICATION, PS-87919-001 FOR PERFORMANCE SPECIFICATION.
 - RECOMMENDED MODULE CARD LAYOUT SHALL BE AS PER JEDEC MO-237.
 - PRODUCT SHALL BE PACKED IN TRAY. PLS REFER TO SHEET 6.
- MOLEX LOGO, DATE & PART NUMBER INDICATED ON HOUSING.

ADD NEW OPTION EC NO: S2009-0461 DRWN: CCTEH CHKD: CGTAN APPR: SILENI 2009/01/06 2009/01/06 2009/01/08	DESCRIPTION REV	QUALITY SYMBOLS	GENERAL TOLERANCES (UNLESS SPECIFIED)	DIMENSION STYLE	SCALE	DESIGN UNITS	THIRD ANGLE PROJECTION															
		$\nabla = 0$ $\sphericalangle = 0$	<table border="1"> <thead> <tr> <th></th> <th>mm</th> <th>INCH</th> </tr> </thead> <tbody> <tr> <td>4 PLACES</td> <td>± ---</td> <td>± ---</td> </tr> <tr> <td>3 PLACES</td> <td>± ---</td> <td>± ---</td> </tr> <tr> <td>2 PLACES</td> <td>± 0.25</td> <td>± ---</td> </tr> <tr> <td>1 PLACE</td> <td>± ---</td> <td>± ---</td> </tr> </tbody> </table>		mm	INCH	4 PLACES	± ---	± ---	3 PLACES	± ---	± ---	2 PLACES	± 0.25	± ---	1 PLACE	± ---	± ---	MM ONLY	NTS	METRIC	<input checked="" type="checkbox"/> THIRD ANGLE <input type="checkbox"/> FIRST ANGLE
			mm	INCH																		
		4 PLACES	± ---	± ---																		
3 PLACES	± ---	± ---																				
2 PLACES	± 0.25	± ---																				
1 PLACE	± ---	± ---																				
	<table border="1"> <thead> <tr> <th></th> <th>mm</th> <th>INCH</th> </tr> </thead> <tbody> <tr> <td>4 PLACES</td> <td>± ---</td> <td>± ---</td> </tr> <tr> <td>3 PLACES</td> <td>± ---</td> <td>± ---</td> </tr> <tr> <td>2 PLACES</td> <td>± 0.25</td> <td>± ---</td> </tr> <tr> <td>1 PLACE</td> <td>± ---</td> <td>± ---</td> </tr> </tbody> </table>		mm	INCH	4 PLACES	± ---	± ---	3 PLACES	± ---	± ---	2 PLACES	± 0.25	± ---	1 PLACE	± ---	± ---	DRAWN BY: JTAN CHECKED BY: MLONG APPROVED BY: GGLEE MATERIAL NO.	DATE: 2004/05/26 DATE: 2004/06/11 DATE: 2004/06/11	TITLE: DDR2 DIMM, 100MM PITCH 240 CKTS, 25 DEG. REVERSE ANGLE	MOLEX INCORPORATED DOCUMENT NO. SD-87919-001	SHEET NO. 1 OF 6	
	mm	INCH																				
4 PLACES	± ---	± ---																				
3 PLACES	± ---	± ---																				
2 PLACES	± 0.25	± ---																				
1 PLACE	± ---	± ---																				
A6		DRAFT WHERE APPLICABLE MUST REMAIN WITHIN DIMENSIONS	SEE TABLE	THIS DRAWING CONTAINS INFORMATION THAT IS PROPRIETARY TO MOLEX INCORPORATED AND SHOULD NOT BE USED WITHOUT WRITTEN PERMISSION																		



ADD NEW OPTION EC NO: S2009-0461 DRW: CCTEH 2009/01/06 CHKD: CJTAN 2009/01/06 APPR: SHLENI 2009/01/08	QUALITY SYMBOLS ▽=0 ◻=0	GENERAL TOLERANCES (UNLESS SPECIFIED)		DIMENSION STYLE	SCALE	DESIGN UNITS	THIRD ANGLE PROJECTION		
			mm	INCH	MM ONLY	NTS	METRIC		
		4 PLACES	± ---	± ---	DRAWN BY	DATE	TITLE		
		3 PLACES	± ---	± ---	JTAN	2004/05/26	DDR2 DIMM, 1.00MM PITCH		
	2 PLACES	± 0.25	± ---	CHECKED BY	DATE	240 CKTS, 25 DEG.			
	1 PLACE	± ---	± ---	MLONG	2004/06/11	REVERSE ANGLE			
	ANGULAR ± 5 °			APPROVED BY	DATE	MOLEX INCORPORATED			
	DRAFT WHERE APPLICABLE MUST REMAIN WITHIN DIMENSIONS			GGLEE	2004/06/11	DOCUMENT NO.		SHEET NO.	
A6				SEE TABLE		SD-87919-001		2 OF 6	
				SIZE	THIS DRAWING CONTAINS INFORMATION THAT IS PROPRIETARY TO MOLEX INCORPORATED AND SHOULD NOT BE USED WITHOUT WRITTEN PERMISSION				
				A3					



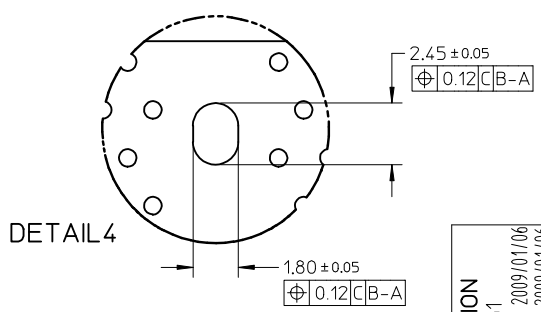
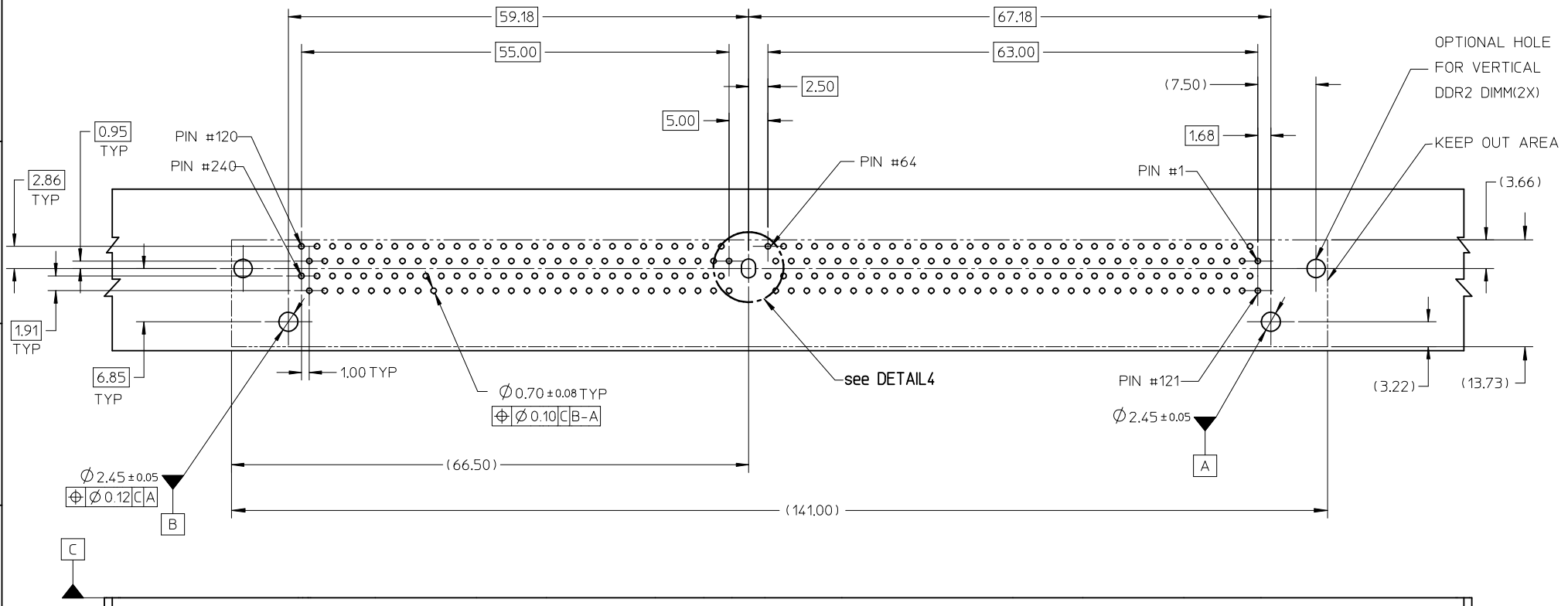
KEY LOCATION	VOLTAGE	DIM 'X'	DIM 'Y'
CENTER	1.8V	2.50	4.00

NOTES :
 ▲ MODULE CARD USED IN PRODUCT TESTING ARE CHAMFERED.

ADD NEW OPTION EC NO: S2009-0461 DRWN: CCTEH CHKD: CJTAN APPR: SILENI 2009/01/06 2009/01/06 2009/01/08	QUALITY SYMBOLS ▽ = 0 ◻ = 0	GENERAL TOLERANCES (UNLESS SPECIFIED)		DIMENSION STYLE MM ONLY		SCALE NTS	DESIGN UNITS METRIC	THIRD ANGLE PROJECTION		
		4 PLACES	± ---	± ---	DRAWN BY	DATE	TITLE			
		3 PLACES	± ---	± ---	JTAN	2004/05/26	DDR2 DIMM, 100MM PITCH			
		2 PLACES	± 0.25	± ---	CHECKED BY	DATE	240 CKTS, 25 DEG.			
		1 PLACE	± ---	± ---	MLONG	2004/06/11	REVERSE ANGLE			
ANGULAR ± 5 °		DRAFT WHERE APPLICABLE MUST REMAIN WITHIN DIMENSIONS		APPROVED BY GGLLEE 2004/06/11		molex MOLEX INCORPORATED		SHEET NO. 3 OF 6		
MATERIAL NO. SEE TABLE		SIZE A3		THIS DRAWING CONTAINS INFORMATION THAT IS PROPRIETARY TO MOLEX INCORPORATED AND SHOULD NOT BE USED WITHOUT WRITTEN PERMISSION				DOCUMENT NO. SD-87919-001		

10 9 8 7 6 5 4 3 2 1

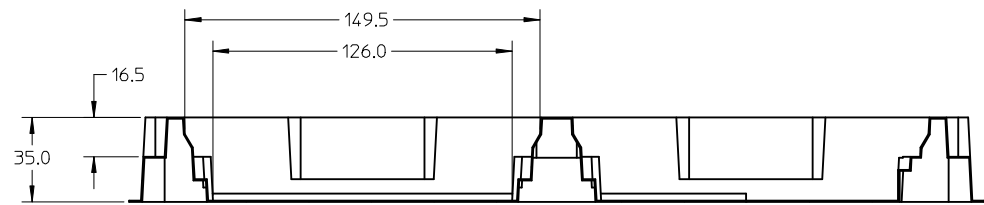
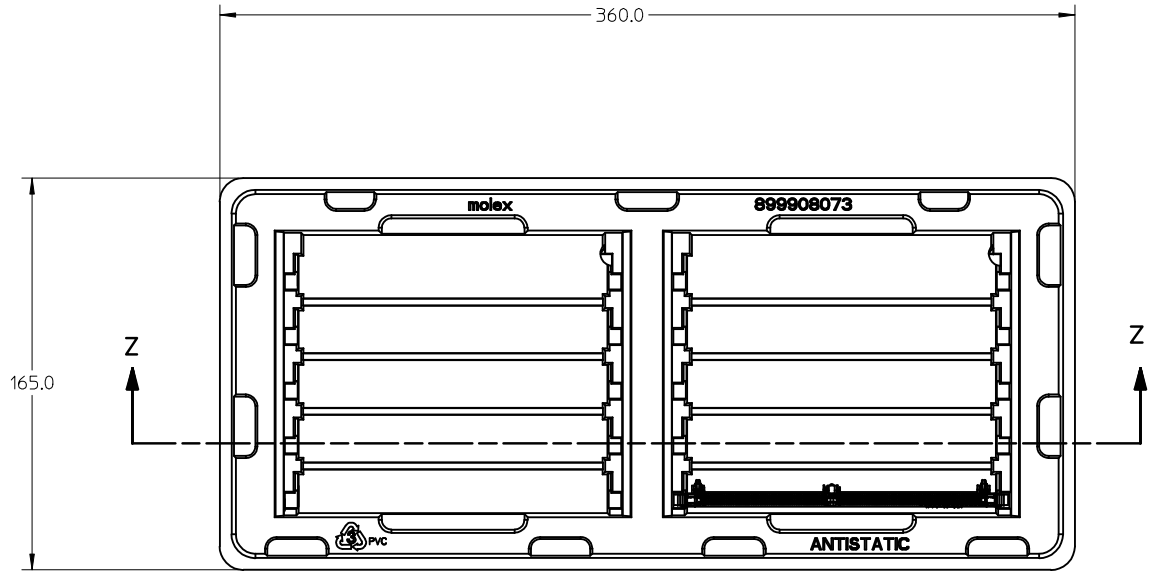
F
E
D
C
B
A



ADD NEW OPTION EC NO: S2009-0461 DRWN: CTEH 2009/01/06 CHKD: CGTAN 2009/01/06 APPR: SILENI 2009/01/08	DESCRIPTION QUALITY SYMBOLS ▽=0 ∇=0	GENERAL TOLERANCES (UNLESS SPECIFIED)		DIMENSION STYLE MM ONLY		SCALE NTS	DESIGN UNITS METRIC	THIRD ANGLE PROJECTION		
			mm	INCH	DRAWN BY	DATE	TITLE			
		4 PLACES	± ---	± ---	JTAN	2004/05/26	DDR2 DIMM, 100MM PITCH 240 CKTS, 25 DEG. REVERSE ANGLE			
		3 PLACES	± ---	± ---	CHECKED BY	DATE				
		2 PLACES	± 0.25	± ---	MLONG	2004/06/11	MOLEX INCORPORATED			
1 PLACE	± ---	± ---	APPROVED BY	DATE						
ANGULAR ± 5 °		DRAFT WHERE APPLICABLE MUST REMAIN WITHIN DIMENSIONS		MATERIAL NO. SEE TABLE		DOCUMENT NO. SD-87919-001		SHEET NO. 4 OF 6		

9 8 7 6 5 4 3 2 1

10 9 8 7 6 5 4 3 2 1



SECTION Z-Z

NOTE:

1. CAVITY QTY : 2 X 5 = 10

ADD NEW OPTION EC NO: S2009-0461 DRW: CCTEH CHKD: CGTAN APPR: SHLENI	2009/01/06 2009/01/06 2009/01/08	DESCRIPTION REV	QUALITY SYMBOLS	GENERAL TOLERANCES (UNLESS SPECIFIED) mm INCH 4 PLACES ± --- ± --- 3 PLACES ± --- ± --- 2 PLACES ± 0.25 ± --- 1 PLACE ± --- ± --- ANGULAR ± 5 ° DRAFT WHERE APPLICABLE MUST REMAIN WITHIN DIMENSIONS	DIMENSION STYLE	SCALE	DESIGN UNITS	THIRD ANGLE PROJECTION	
			▼=0 ∇=0		MM ONLY	NTS	METRIC	□ □	
			DRAWN BY JTAN CHECKED BY MLONG APPROVED BY GGLEE		DATE	TITLE	DDR2 DIMM, 100MM PITCH 240 CKTS, 25 DEG. REVERSE ANGLE		
			DATE		MOLEX INCORPORATED DOCUMENT NO.	SHEET NO.			
A6				SEE TABLE	2004/05/26	2004/06/11	2004/06/11	SD-87919-001	5 OF 6

9 8 7 6 5 4 3 2 1

PART NO.	VOLTAGE KEY	DIM 'P'	DIM 'Q'	RECOMMENDED PCB THICKNESS	CONTACT AREA PLATING	SOLDERTAIL PLATING	LATCH COLOR
87919-0001	1.8V	2.79	3.18	1.57	0.76μm/ 30μ" GOLD OVER 1.27μm/ 50μ" MIN NICKEL	2.54μm/ 100μ" MIN. TIN OVER 1.27μm/ 50μ" MIN NICKEL	NATURAL
87919-0011		3.18	4.83	2.36			
87919-1001		4.00		3.18			
87919-0101		2.79	3.18	1.57			
87919-0111		3.18	4.83	2.36	0.38μm/ 15μ" GOLD OVER 1.27μm/ 50μ" MIN NICKEL		
87919-0333							

ADD NEW OPTION EC NO: S2009-0461 DRWN: CTEH CHKD: CJTAN APPR: SHLENI	2009/01/06 2009/01/06 2009/01/08	DESCRIPTION REV	QUALITY SYMBOLS	GENERAL TOLERANCES (UNLESS SPECIFIED)	DIMENSION STYLE	SCALE	DESIGN UNITS	THIRD ANGLE PROJECTION		
			=0 =0	mm INCH 4 PLACES ± --- ± --- 3 PLACES ± --- ± --- 2 PLACES ± 0.25 ± --- 1 PLACE ± --- ± --- ANGULAR ± 5 °	MM ONLY	NTS	METRIC	DRAWN BY: JTAN DATE: 2004/05/26 CHECKED BY: MLONG DATE: 2004/06/11 APPROVED BY: GGLEE DATE: 2004/06/11	TITLE	DDR2 DIMM, 1.00MM PITCH 240 CKTS, 25 DEG. REVERSE ANGLE
			DRAFT WHERE APPLICABLE MUST REMAIN WITHIN DIMENSIONS	SEE TABLE	MATERIAL NO.	DOCUMENT NO.	SHEET NO.	MOLEX INCORPORATED SD-87919-001 6 OF 6		
			SIZE A3	THIS DRAWING CONTAINS INFORMATION THAT IS PROPRIETARY TO MOLEX INCORPORATED AND SHOULD NOT BE USED WITHOUT WRITTEN PERMISSION						