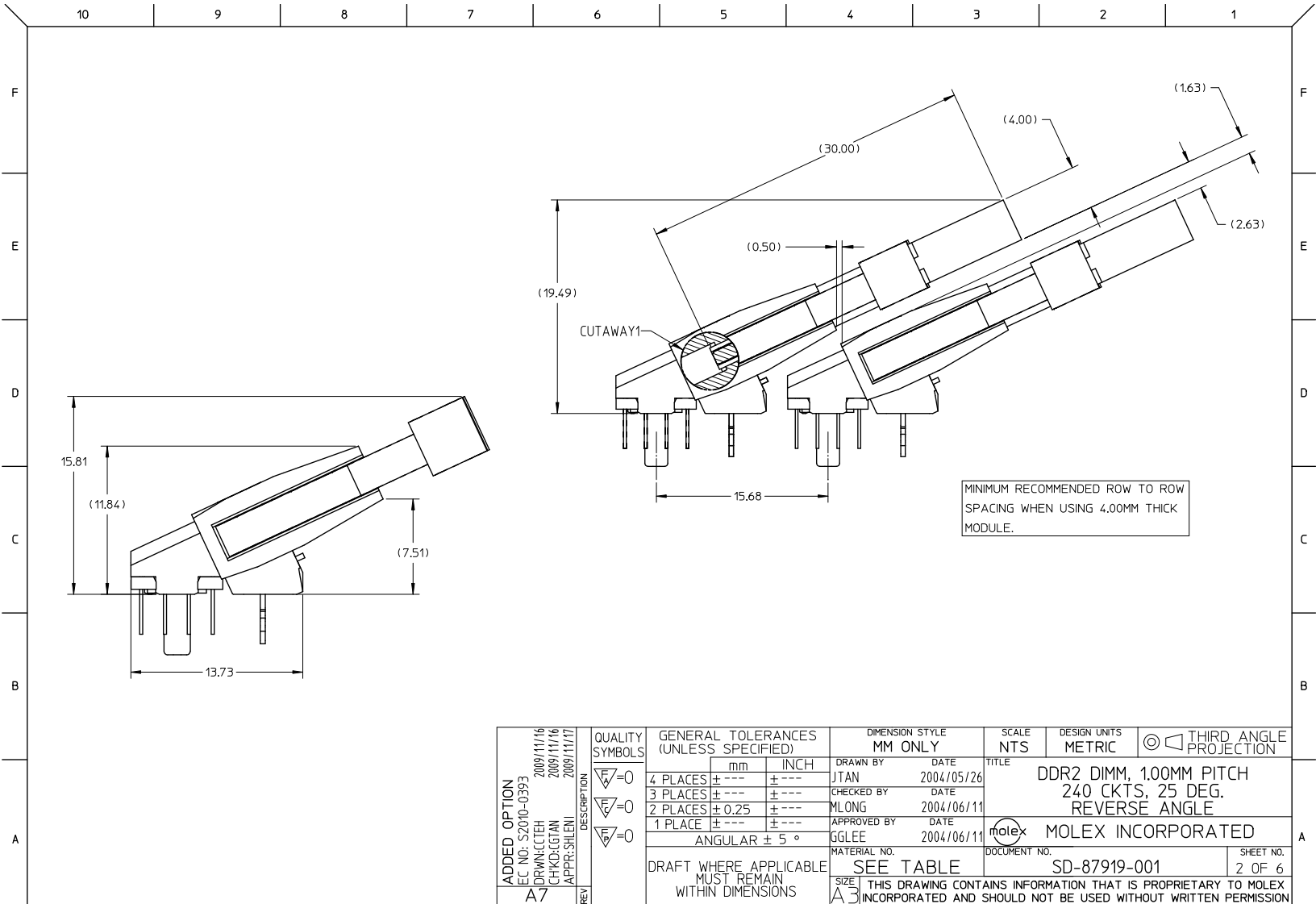


NOTES:

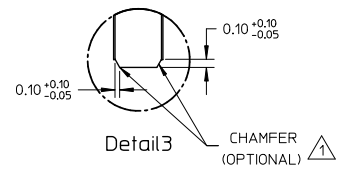
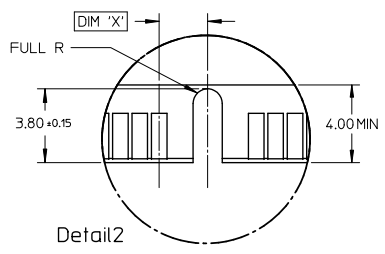
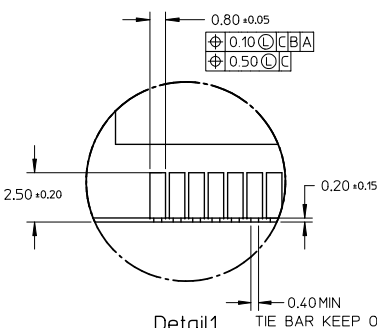
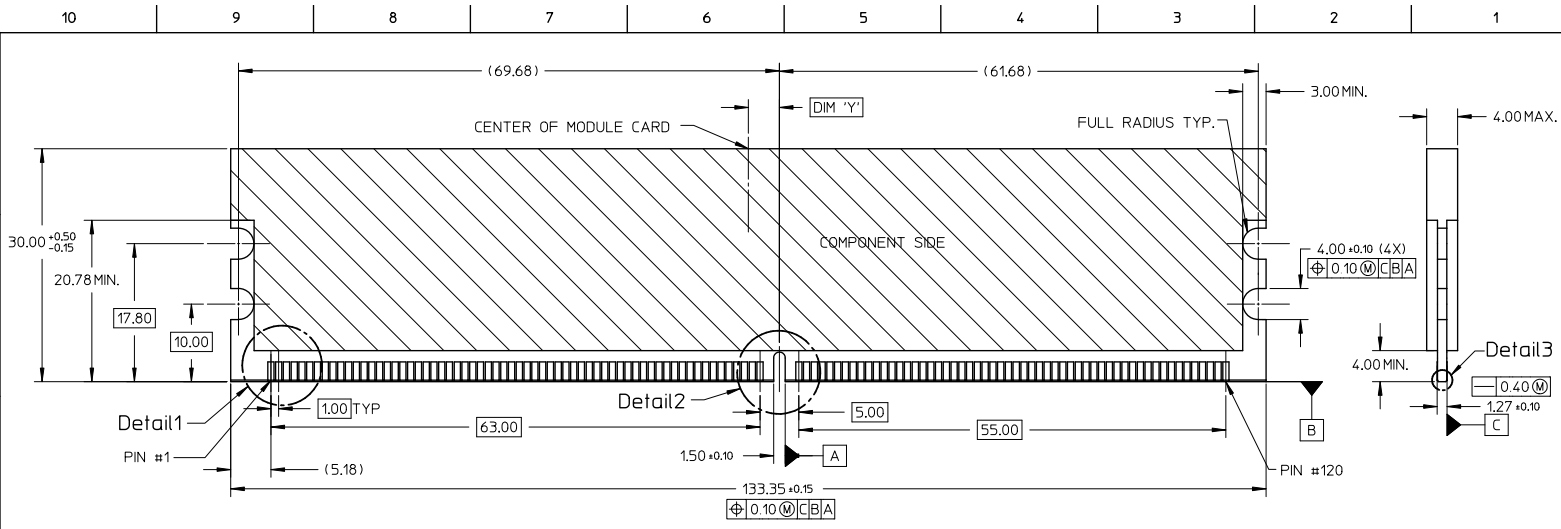
- MATERIAL : HOUSING & BASEPLATE.
 - LCP, GLASS FILLED, UL94-V0, BLACK.
 - LATCH.
 - HIGH TEMP. NYLON, GLASS FILLED, UL94-V0, NATURAL (OFF WHITE).
 - TERMINALS & FORKLICK - COPPER ALLOY.
 - PLATING : CONTACT AREA - SEE TABLE ON SHEET 5.
SOLDERTAIL - SEE TABLE ON SHEET 5.
 - CARD SLOT ACCEPTS 1.27+/-0.10MM MODULE THICKNESS (MEASURED OVER PC PADS).
 - REFER TO PRODUCT SPECIFICATION, PS-87919-001 FOR PERFORMANCE SPECIFICATION.
 - RECOMMENDED MODULE CARD LAYOUT SHALL BE AS PER JEDEC MO-237.
 - PRODUCT SHALL BE PACKED IN TRAY. PLS REFER TO SHEET 6.
- MOLEX LOGO, DATE & PART NUMBER INDICATED ON HOUSING.

ADDED OPTION EC NO: S2010-0393 DRAWN: CTEH 2009/11/16 CHECKED: TAN 2009/11/16 APPR: SILEN 2009/11/17 A7	QUALITY SYMBOLS ∇=0 ∇=0 ∇=0	GENERAL TOLERANCES (UNLESS SPECIFIED)		DIMENSION STYLE MM ONLY		SCALE NTS	DESIGN UNITS METRIC	THIRD ANGLE PROJECTION	
		4 PLACES ± --- ± ---	3 PLACES ± --- ± ---	2 PLACES ± 0.25 ± ---	1 PLACE ± --- ± ---	ANGULAR ± 5 °	DRAWN BY JTAN	DATE 2004/05/26	TITLE DDR2 DIMM, 100MM PITCH 240 CKTS, 25 DEG. REVERSE ANGLE
		DRAFT WHERE APPLICABLE MUST REMAIN WITHIN DIMENSIONS		SEE TABLE		MATERIAL NO.	DOCUMENT NO.	MOLEX INCORPORATED	
						SD-87919-001		SHEET NO. 1 OF 6	



MINIMUM RECOMMENDED ROW TO ROW SPACING WHEN USING 4.00MM THICK MODULE.

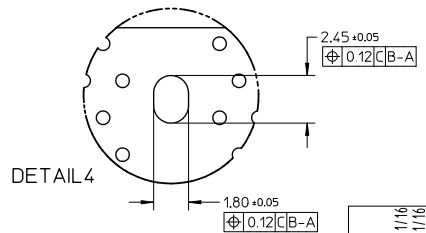
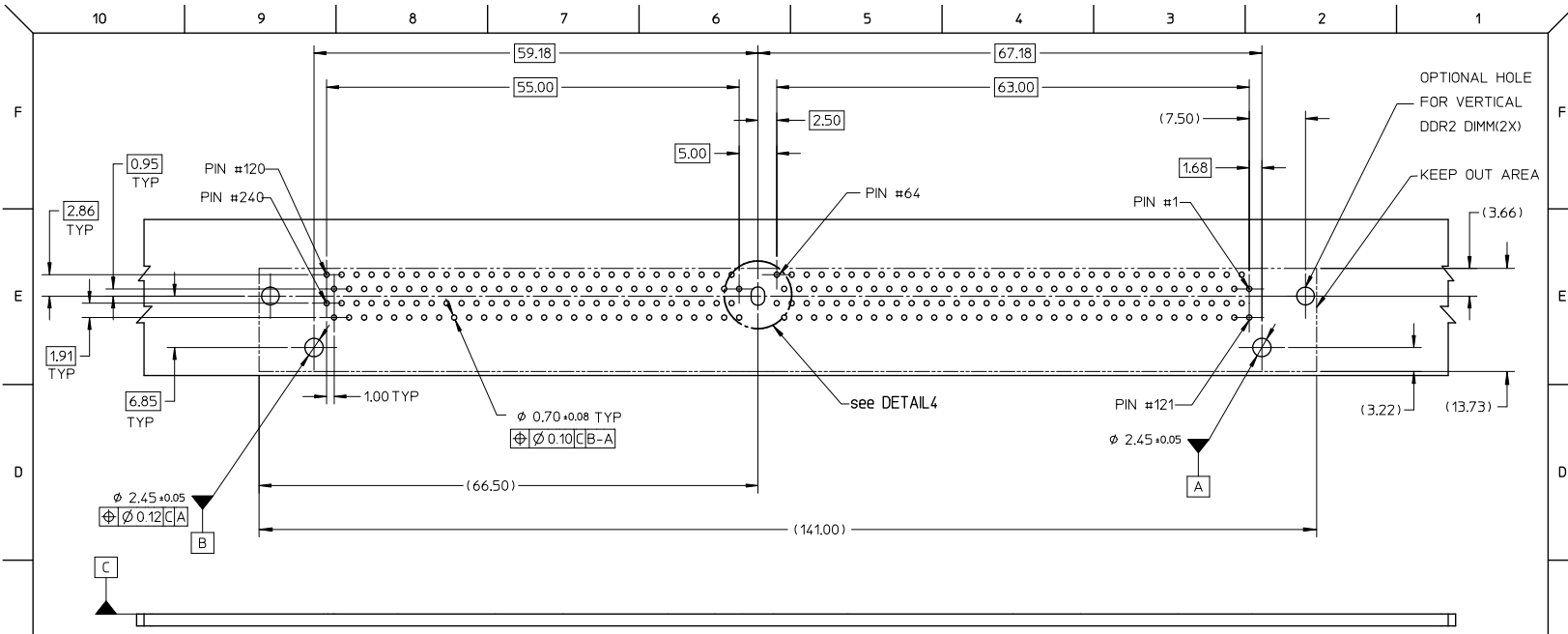
ADDED OPTION E.C. NO: S2010-0393 2009/11/16 DRAWN: CCTEH 2009/11/16 CHECKED: GTAN 2009/11/17 APPR: SHLENI	DESCRIPTION REV	QUALITY SYMBOLS	GENERAL TOLERANCES (UNLESS SPECIFIED)	DIMENSION STYLE	SCALE	DESIGN UNITS	THIRD ANGLE PROJECTION												
		$\nabla=0$ $\nabla=0$ $\nabla=0$	<table border="1"> <tr> <th>mm</th> <th>INCH</th> </tr> <tr> <td>4 PLACES ± ---</td> <td>± ---</td> </tr> <tr> <td>3 PLACES ± ---</td> <td>± ---</td> </tr> <tr> <td>2 PLACES ± 0.25</td> <td>± ---</td> </tr> <tr> <td>1 PLACE ± ---</td> <td>± ---</td> </tr> <tr> <td colspan="2">ANGULAR ± 5 °</td> </tr> </table>	mm	INCH	4 PLACES ± ---	± ---	3 PLACES ± ---	± ---	2 PLACES ± 0.25	± ---	1 PLACE ± ---	± ---	ANGULAR ± 5 °		MM ONLY	NTS	METRIC	
		mm	INCH																
		4 PLACES ± ---	± ---																
3 PLACES ± ---	± ---																		
2 PLACES ± 0.25	± ---																		
1 PLACE ± ---	± ---																		
ANGULAR ± 5 °																			
DRAWN BY: JTAN DATE: 2004/05/26 CHECKED BY: MLONG DATE: 2004/06/11 APPROVED BY: GGLEE DATE: 2004/06/11	TITLE: DDR2 DIMM, 1.00MM PITCH 240 CKTS, 25 DEG. REVERSE ANGLE	MOLEX INCORPORATED	MATERIAL NO. SEE TABLE DOCUMENT NO. SD-87919-001 SHEET NO. 2 OF 6																
DRAFT WHERE APPLICABLE MUST REMAIN WITHIN DIMENSIONS		SIZE: A3 THIS DRAWING CONTAINS INFORMATION THAT IS PROPRIETARY TO MOLEX INCORPORATED AND SHOULD NOT BE USED WITHOUT WRITTEN PERMISSION																	



KEY LOCATION	VOLTAGE	DIM 'X'	DIM 'Y'
CENTER	1.8V	2.50	4.00

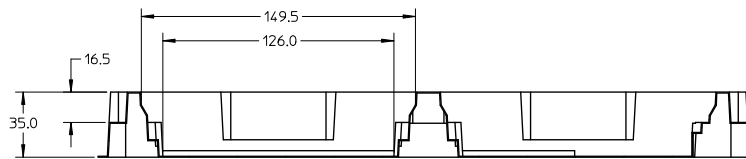
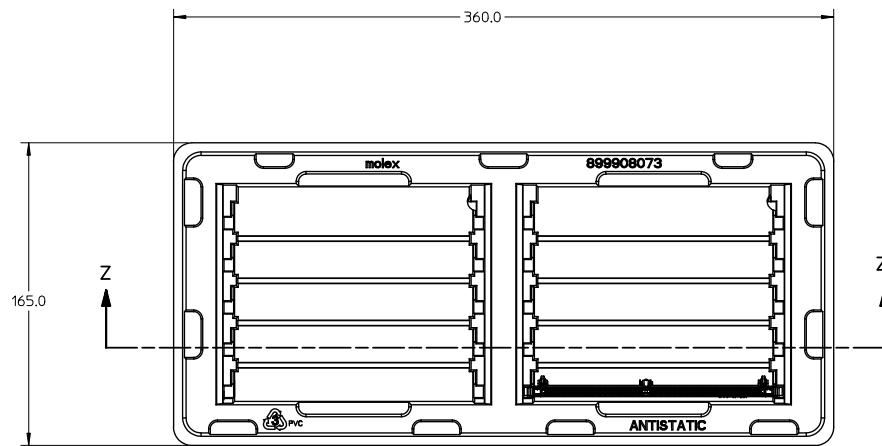
NOTES :
 △ MODULE CARD USED IN PRODUCT TESTING ARE CHAMFERED.

ADDED OPTION EC NO: S2010-0393 DRW: NCC/TEH CHKD: CG/TAN APPR: SH/LENI 2009/11/16 2009/11/16 2009/11/17	QUALITY SYMBOLS ▽=0 ▽=0 ▽=0	GENERAL TOLERANCES (UNLESS SPECIFIED) mm INCH 4 PLACES ± --- ± --- 3 PLACES ± --- ± --- 2 PLACES ± 0.25 ± --- 1 PLACE ± --- ± --- ANGULAR ± 5 °	DIMENSION STYLE MM ONLY	SCALE NTS	DESIGN UNITS METRIC	THIRD ANGLE PROJECTION	DRAWN BY JTAN	DATE 2004/05/26	TITLE DDR2 DIMM, 100MM PITCH 240 CKTS, 25 DEG. REVERSE ANGLE
							CHECKED BY MLONG	DATE 2004/06/11	
							APPROVED BY GGLEE	DATE 2004/06/11	
							MATERIAL NO. SEE TABLE	DOCUMENT NO. SD-87919-001	
DRAFT WHERE APPLICABLE MUST REMAIN WITHIN DIMENSIONS		SIZE A3		THIS DRAWING CONTAINS INFORMATION THAT IS PROPRIETARY TO MOLEX INCORPORATED AND SHOULD NOT BE USED WITHOUT WRITTEN PERMISSION		SHEET NO. 3 OF 6			



ADDED OPTION EC NO: S2010-0393 2009/11/16 DRWNG:CTEH 2009/11/16 CHKD:GTAN 2009/11/17 APPR:SHLEN	QUALITY SYMBOLS ▽=0 ▽=0 ▽=0	GENERAL TOLERANCES (UNLESS SPECIFIED)		DIMENSION STYLE MM ONLY		SCALE NTS	DESIGN UNITS METRIC	THIRD ANGLE PROJECTION		
		4 PLACES ± --- ± ---	mm INCH	DRAWN BY JTAN	DATE 2004/05/26	TITLE DDR2 DIMM, 1.00MM PITCH 240 CKTS, 25 DEG. REVERSE ANGLE				
		3 PLACES ± --- ± ---		CHECKED BY MLONG	DATE 2004/06/11	MOLEX INCORPORATED				
		2 PLACES ± 0.25 ± --- 1 PLACE ± --- ± --- ANGULAR ± 5 °		APPROVED BY GGLEE	DATE 2004/06/11	MATERIAL NO. SEE TABLE		DOCUMENT NO. SD-87919-001	SHEET NO. 4 OF 6	
DRAFT WHERE APPLICABLE MUST REMAIN WITHIN DIMENSIONS		SIZE A3		THIS DRAWING CONTAINS INFORMATION THAT IS PROPRIETARY TO MOLEX INCORPORATED AND SHOULD NOT BE USED WITHOUT WRITTEN PERMISSION						

tb_frame_A3_P_AM_T
Rev. F 2009/06/18



SECTION Z-Z


NOTE:

1. CAVITY QTY : 2 X 5 = 10

ADDED OPTION EC NO: S2010-0393 DRAWN: CTEH 2009/11/16 CHKD: CGTAN 2009/11/16 APPR: S/LENI 2009/11/17 A7	DESCRIPTION QUALITY SYMBOLS $\nabla=0$ $\nabla=0$ $\nabla=0$	GENERAL TOLERANCES (UNLESS SPECIFIED)		DIMENSION STYLE MM ONLY		SCALE NTS	DESIGN UNITS METRIC	\odot THIRD ANGLE PROJECTION	
		4 PLACES \pm --- \pm ---	mm INCH	DRAWN BY JTAN	DATE 2004/05/26	TITLE DDR2 DIMM, 100MM PITCH 240 CKTS, 25 DEG. REVERSE ANGLE			
		3 PLACES \pm --- \pm ---		CHECKED BY MLONG	DATE 2004/06/11	MOLEX INCORPORATED			
		2 PLACES \pm 0.25 \pm ---		APPROVED BY GGLEE	DATE 2004/06/11	MATERIAL NO. SEE TABLE DOCUMENT NO. SD-87919-001			
		1 PLACE \pm --- \pm ---		ANGULAR \pm 5 °		SHEET NO. 5 OF 6			
DRAFT WHERE APPLICABLE MUST REMAIN WITHIN DIMENSIONS				SIZE A3		THIS DRAWING CONTAINS INFORMATION THAT IS PROPRIETARY TO MOLEX INCORPORATED AND SHOULD NOT BE USED WITHOUT WRITTEN PERMISSION			

10 9 8 7 6 5 4 3 2 1

PART NO.	VOLTAGE KEY	DIM 'P'	DIM 'Q'	RECOMMENDED PCB THICKNESS	CONTACT AREA PLATING	SOLDERTAIL PLATING	LATCH COLOR
87919-0001	1.8V	2.79	3.18	1.57	0.76uM/ 30u" GOLD OVER 1.27uM/ 50u" MIN NICKEL	2.54uM/ 100u" MIN. TIN OVER 1.27uM/ 50u" MIN NICKEL	NATURAL
87919-0011		3.18		2.36			
87919-1001		4.00	4.83	3.18			
87919-1002		4.60		3.50			
87919-0101		2.79	3.18	1.57			
87919-0111		3.18	4.83	2.36	0.38uM/ 15u" GOLD OVER 1.27uM/ 50u" MIN NICKEL		
87919-0333							BLACK

ADDED OPTION EC NO: S2010-0393 DRAWN: CTEH 2009/11/16 CHKD: CGTAN 2009/11/16 APPR: SILENI 2009/11/17 A7	DESCRIPTION REV	QUALITY SYMBOLS	GENERAL TOLERANCES (UNLESS SPECIFIED)	DIMENSION STYLE MM ONLY	SCALE NTS	DESIGN UNITS METRIC	THIRD ANGLE PROJECTION
		▽=0	4 PLACES ± --- ± ---	mm INCH	DRAWN BY JTAN	DATE 2004/05/26	TITLE DDR2 DIMM, 100MM PITCH 240 CKTS, 25 DEG. REVERSE ANGLE
		▽=0	3 PLACES ± --- ± ---		CHECKED BY MLONG	DATE 2004/06/11	 MOLEX INCORPORATED
		▽=0	2 PLACES ± 0.25 ± ---		APPROVED BY GGLLEE	DATE 2004/06/11	
		▽=0	1 PLACE ± --- ± ---		MATERIAL NO. SEE TABLE	DOCUMENT NO. SD-87919-001	
DRAFT WHERE APPLICABLE MUST REMAIN WITHIN DIMENSIONS			THIS DRAWING CONTAINS INFORMATION THAT IS PROPRIETARY TO MOLEX INCORPORATED AND SHOULD NOT BE USED WITHOUT WRITTEN PERMISSION				

1b_frame_A3_P_AM_T
Rev. F 2009/06/18

9 8 7 6 5 4 3 2 1