

FEATURES AND SPECIFICATIONS

Features and Benefits

- Sizes 4 to 80 circuits
- Easy breakaway to smaller sizes
- Stackable side-to-side
- Contact and plating orientation according to DIN 41651
- North/south contact orientation avoids overstress
- High pin retention and high mechanical stability after soldering

Reference Information

Product Specification: PS-99020-0001

Packaging: Bag

Mates With: C-Grid III Housing and Connectors

Designed In: Inches

Electrical

Voltage: 350V max.

Current: 3.0A

Contact Resistance: 20mΩ max.

Insulation Resistance: 5000 MΩ min.

Mechanical

Contact Retention to Housing: 20N (2.0kgf) min.

Mating Force: 1N max. Gold and 3N max. Tin

Unmating Force: 0.2N min. Gold and 0.2N min. Tin

Normal Force: 1N

Physical

Housing: Black glass-filled polyester, UL 94V-0

Contact: Copper Alloy, 0.64mm (.025") square pins

Plating: See Table

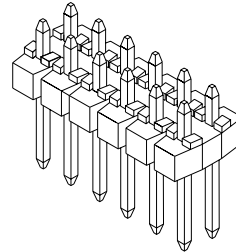
Operating Temperature: -55 to +125°C



2.54mm (.100") Pitch C-Grid III™ Header

90131

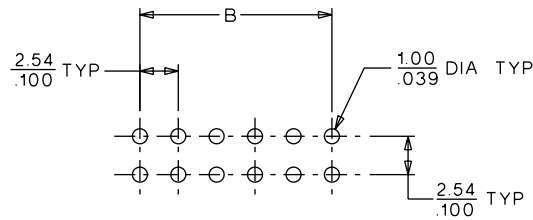
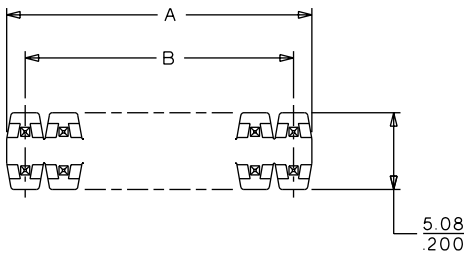
Dual Row Vertical



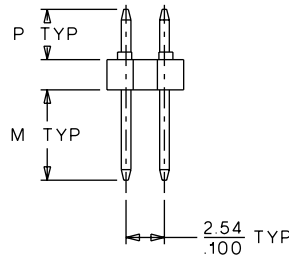
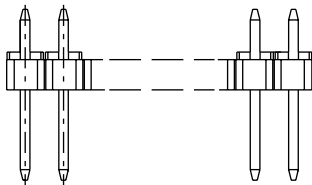
2.54mm (.100") Pitch

CATALOG DRAWING (FOR REFERENCE ONLY)

Not For Use With Molex SL™ Components



PCB LAYOUT: COMPONENT SIDE



2.54
.100 TYP

2.54
.100 TYP

Order Nos. below reflect standard
Dim. M (Mating End)
Dim. P (PC Tail)

Dimension	Pin Length		
	Option 1	Option 2	Option 3
M	6.75 (.266)	5.75 (.226)	5.75 (.226)
P	4.50 (.177)	2.90 (.114)	4.50 (.177)

ORDERING INFORMATION AND DIMENSIONS

Circuits	Order No.			Dimension	
	Plating A	Plating E	Plating F	A	B
4	90131-0122	90131-0762	90131-0922	5.08 (.200)	2.54 (.100)
6	90131-0123	90131-0763	90131-0923	7.62 (.300)	5.08 (.200)
8	90131-0124	90131-0764	90131-0924	10.16 (.400)	7.62 (.300)
10	90131-0125	90131-0765	90131-0925	12.70 (.500)	10.16 (.400)
12	90131-0126	90131-0766	90131-0926	15.24 (.600)	12.70 (.500)
14	90131-0127	90131-0767	90131-0927	17.78 (.700)	15.24 (.600)
16	90131-0128	90131-0768	90131-0928	20.32 (.800)	17.78 (.700)
18	90131-0129	90131-0769	90131-0929	22.86 (.900)	20.32 (.800)
20	90131-0130	90131-0770	90131-0930	25.40 (1.000)	22.86 (.900)
22	90131-0131	90131-0771	90131-0931	27.94 (1.100)	25.40 (1.000)
24	90131-0132	90131-0772	90131-0932	30.48 (1.200)	27.94 (1.100)
26	90131-0133	90131-0773	90131-0933	33.02 (1.300)	30.48 (1.200)
28	90131-0134	90131-0774	90131-0934	35.56 (1.400)	33.02 (1.300)
30	90131-0135	90131-0775	90131-0935	38.10 (1.500)	35.56 (1.400)
32	90131-0136	90131-0776	90131-0936	40.64 (1.600)	38.10 (1.500)
34	90131-0137	90131-0777	90131-0937	43.18 (1.700)	40.64 (1.600)
36	90131-0138	90131-0778	90131-0938	45.72 (1.800)	43.18 (1.700)
38	90131-0139	90131-0779	90131-0939	48.26 (1.900)	45.72 (1.800)
40	90131-0140	90131-0780	90131-0940	50.80 (2.000)	48.26 (1.900)

Circuits	Order No.			Dimension	
	Plating A	Plating E	Plating F	A	B
42	90131-0141	90131-0781	90131-0941	53.34 (2.100)	50.80 (2.000)
44	90131-0142	90131-0782	90131-0942	55.88 (2.200)	53.34 (2.100)
46	90131-0143	90131-0783	90131-0943	58.42 (2.300)	55.88 (2.200)
48	90131-0144	90131-0784	90131-0944	60.46 (2.400)	58.42 (2.300)
50	90131-0145	90131-0785	90131-0945	63.50 (2.500)	60.46 (2.400)
52	90131-0146	90131-0786	90131-0946	66.04 (2.600)	63.50 (2.500)
54	90131-0147	90131-0787	90131-0947	68.58 (2.700)	66.04 (2.600)
56	90131-0148	90131-0788	90131-0948	71.12 (2.800)	68.58 (2.700)
58	90131-0149	90131-0789	90131-0949	73.66 (2.900)	71.12 (2.800)
60	90131-0150	90131-0790	90131-0950	76.20 (3.000)	73.66 (2.900)
62	90131-0151	90131-0791	90131-0951	78.24 (3.100)	76.20 (3.000)
64	90131-0152	90131-0792	90131-0952	81.28 (3.200)	78.24 (3.100)
66	90131-0153	90131-0793	90131-0953	83.82 (3.300)	81.28 (3.200)
68	90131-0154	90131-0794	90131-0954	86.36 (3.400)	83.82 (3.300)
70	90131-0155	90131-0795	90131-0955	88.90 (3.500)	86.36 (3.400)
72	90131-0156	90131-0796	90131-0956	91.44 (3.600)	88.90 (3.500)
74	90131-0157	90131-0797	90131-0957	93.98 (3.700)	91.44 (3.600)
76	90131-0158	90131-0798	90131-0958	96.52 (3.800)	93.98 (3.700)
78	90131-0159	90131-0799	90131-0959	99.06 (3.900)	96.52 (3.800)
80	• 90131-0160	• 90131-0800	• 90131-0960	101.60 (4.000)	99.06 (3.900)

• Molex European standard product, usually available within shorter lead times

For other available versions contact Molex

Plating A: 4µm (160µ") Tin/Lead over Nickel

Plating E: 0.38µm (15µ") selective Gold over Nickel and 4µm (160µ") Tin/Lead over Nickel

Plating F: 0.76µm (30µ") selective Gold over Nickel and 4µm (160µ") Tin/Lead over Nickel