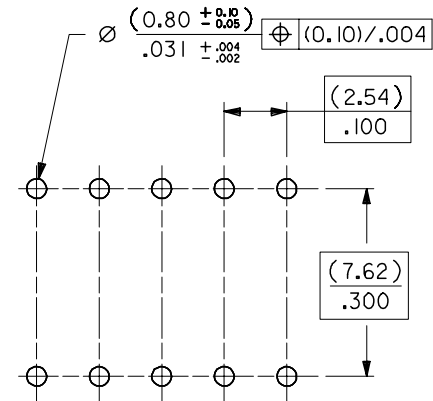
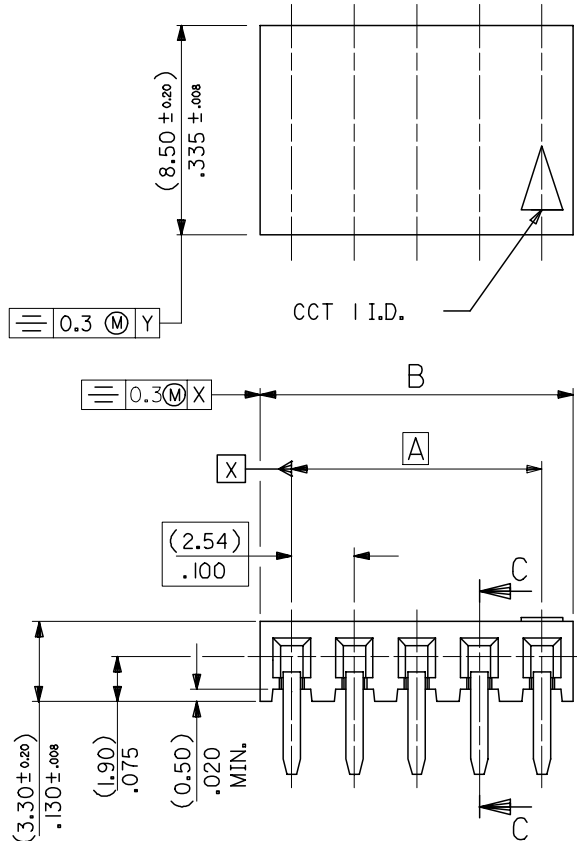


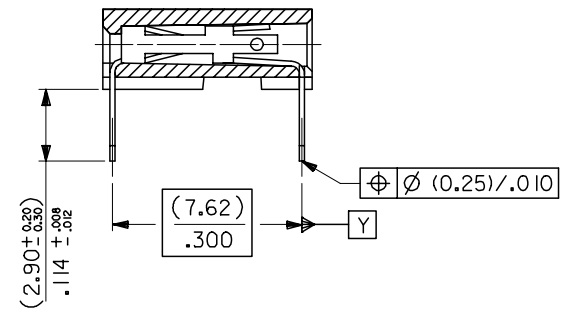
10 9 8 7 6 5 4 3 2 1

F
E
D
C
B
A

F
E
D
C
B
A



RECOMMENDED P.C. BOARD HOLE PATTERN FOR STRAIGHT PINS



SECTION C-C SHOWING STRAIGHT PINS

- NOTES
- CONTACT-PLATED PHOSPHOR BRONZE. (SEE SHEET 2)
 - HOUSING
POLYESTER (PBT), 15% GLASS FILL, UL94-V0.
COLOR: BLACK.
ALSO
POLYAMIDE (PA4/6), 30% GLASS FILL, UL94-V0.
COLOR: NATURAL.
 - FOR (0.635) ± .025 SQ. MALE PINS THE LENGTH MUST BE (5.65) ± .222 MIN & (7.00) ± .276 MAX. TO ENSURE GOOD CONNECTION WITH CONTACT.
 - PRODUCT SPECIFICATION: PS-99020-0001
 - PCB THICKNESS 1.6MM

| ADDED NOTES EC NO: E2008-0119 DRWN:DBYRNES CHKD: APPR:EOHANY 2007/09/10 2007/09/10 2007/09/10 | QUALITY SYMBOLS ▽=0 ▽=0 | GENERAL TOLERANCES (UNLESS SPECIFIED) | | DIMENSION STYLE MM ONLY | | SCALE 5:1 | DESIGN UNITS METRIC | THIRD ANGLE PROJECTION | | | | | | | | | | | | | | | | | |
|---|-------------------------------|--|-------|----------------------------|----|---------------------------|------------------------|------------------------|-------|----------|-------|-------|----------|--------|-------|---------|-------|-------|----------------|--|--------------------|---|--|--|--|
| | | <table border="1"> <thead> <tr> <th></th> <th>MM</th> <th>INCH</th> </tr> </thead> <tbody> <tr> <td>4 PLACES</td> <td>± ---</td> <td>± ---</td> </tr> <tr> <td>3 PLACES</td> <td>± ---</td> <td>± ---</td> </tr> <tr> <td>2 PLACES</td> <td>± 0.15</td> <td>± ---</td> </tr> <tr> <td>1 PLACE</td> <td>± ---</td> <td>± ---</td> </tr> </tbody> </table> | | | MM | INCH | 4 PLACES | ± --- | ± --- | 3 PLACES | ± --- | ± --- | 2 PLACES | ± 0.15 | ± --- | 1 PLACE | ± --- | ± --- | DRAWN BY DB | | DATE 1987/07/14 | TITLE C-GRID III SINGLE ROW HORIZONTAL P.C BOARD CONN. | | | |
| | | | MM | INCH | | | | | | | | | | | | | | | | | | | | | |
| | | 4 PLACES | ± --- | ± --- | | | | | | | | | | | | | | | | | | | | | |
| 3 PLACES | ± --- | ± --- | | | | | | | | | | | | | | | | | | | | | | | |
| 2 PLACES | ± 0.15 | ± --- | | | | | | | | | | | | | | | | | | | | | | | |
| 1 PLACE | ± --- | ± --- | | | | | | | | | | | | | | | | | | | | | | | |
| ANGULAR ± 2 ° | | CHECKED BY D.MORIARTY | | DATE | | | | | | | | | | | | | | | | | | | | | |
| DRAFT WHERE APPLICABLE MUST REMAIN WITHIN DIMENSIONS | | SEE CHART | | APPROVED BY J.DENNEHY | | MOLEX INCORPORATED | | | | | | | | | | | | | | | | | | | |
| AJ | | REV | | MATERIAL NO. | | DOCUMENT NO. SDA-90148 | | SHEET NO. 1 OF 3 | | | | | | | | | | | | | | | | | |

9 8 7 6 5 4 3 2 1

| PART NO's - STRAIGHT PINS | | PART NO. | NO OF CKTS. | DIM. A | DIM. B $(\pm \frac{0.30}{.32})$ | NO. PER TUBE |
|---------------------------|-------------------|------------|-------------|---------------|---------------------------------|--------------|
| STANDARD | CUSTOMER SPECIFIC | | | | | |
| 90148-1X02 | | 90148-4X02 | 2 | (2.54) .100 | (5.08) .200 | 105 |
| ↑ 03 | ↑ | ↑ 03 | 3 | (5.08) .200 | (7.62) .300 | 72 |
| 04 | ↓ | 04 | 4 | (7.62) .300 | (10.16) .400 | 52 |
| 05 | | 05 | 5 | (10.16) .400 | (12.70) .500 | 44 |
| 06 | 90148-9X06 | 06 | 6 | (12.70) .500 | (15.24) .600 | 36 |
| 07 | | 07 | 7 | (15.24) .600 | (17.78) .700 | 30 |
| 08 | | 08 | 8 | (17.78) .700 | (20.32) .800 | 26 |
| 09 | | 09 | 9 | (20.32) .800 | (22.86) .900 | 24 |
| 10 | | 10 | 10 | (22.86) .900 | (25.40) 1.000 | 22 |
| 11 | | 11 | 11 | (25.40) 1.000 | (27.94) 1.100 | 18 |
| 12 | | 12 | 12 | (27.94) 1.100 | (30.48) 1.200 | 18 |
| 13 | | 13 | 13 | | | 16 |
| 14 | | 14 | 14 | (33.02) 1.300 | (35.56) 1.400 | 14 |
| 15 | | 15 | 15 | (35.56) 1.400 | (38.10) 1.500 | 14 |
| 16 | | 16 | 16 | | | 13 |
| 17 | | 17 | 17 | | | 12 |
| 18 | | 18 | 18 | (43.18) 1.700 | (45.72) 1.800 | 12 |
| 19 | | 19 | 19 | (45.72) 1.800 | (48.26) 1.900 | 12 |
| 20 | | 20 | 20 | (48.26) 1.900 | (50.80) 2.000 | 11 |
| 21 | | 21 | 21 | | | 10 |
| 22 | | 22 | 22 | | | 10 |
| 23 | | 23 | 23 | | | 10 |
| 24 | | 24 | 24 | | | 9 |
| 25 | | 25 | 25 | (60.96) 2.400 | (63.50) 2.500 | 8 |
| 26 | | 26 | 26 | (63.50) 2.500 | (66.04) 2.600 | 8 |
| 27 | | 27 | 27 | | | 8 |
| 28 | | 28 | 28 | | | 7 |
| 29 | | 29 | 29 | | | 7 |
| 30 | | 30 | 30 | (73.66) 2.900 | (76.20) 3.000 | 7 |
| ↓ 31 | ↓ | ↓ 31 | 31 | | | 7 |
| 90148-1X32 | | 90148-4X32 | 32 | (78.74) 3.100 | (81.28) 3.200 | 6 |

PLATING VERSION A

PRE-PLATED HOT DIP TIN
1.0 TO 2.5 microns (.00004" TO .00010").

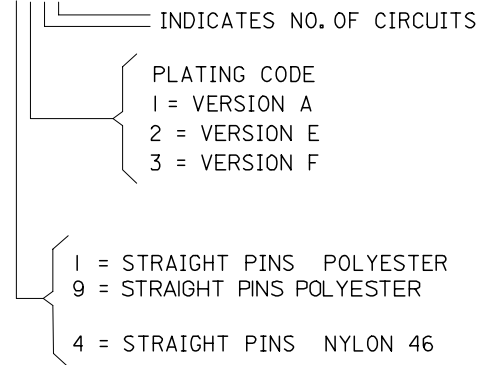
PLATING VERSION E

1.27 TO 1.78 microns (.00005" TO .00007") NICKEL
OVERALL, 0.38 TO 0.64 microns (.000015" TO .000025")
GOLD ON CONTACT AREA (OVER NICKEL).
3 TO 5 microns (.00012" TO .00020") TIN
ON SOLDER TAILS (OVER NICKEL).

PLATING VERSION F.

1.27 TO 1.78 microns (.00005" TO .00007") NICKEL
OVERALL, 0.76 TO 1.0 microns (.00003" TO .00004")
GOLD ON CONTACT AREA (OVER NICKEL).
3 TO 5 microns (.00012" TO .00020") TIN
ON SOLDER TAILS (OVER NICKEL).

90148-XXXX



| | | | | | | | |
|--|-----------------|--|----------------------------|----------------|---------------------------|--|--|
| ADD NEW P/N EC NO: E2007-0823 DRWN:DBYRNES CHKD: APPR:EDMAMONY 2007/03/29 2007/03/29 2007/04/04 | QUALITY SYMBOLS | GENERAL TOLERANCES (UNLESS SPECIFIED) | DIMENSION STYLE MM ONLY | SCALE --- | DESIGN UNITS METRIC | THIRD ANGLE PROJECTION | |
| | ▽=0 ∇=0 | 4 PLACES ±--- 3 PLACES ±--- 2 PLACES ±--- 1 PLACE ±--- ANGULAR ±---° | mm INCH | DRAWN BY DB | DATE 1987/07/14 | TITLE C-GRID III SINGLE ROW HORIZONTAL P.C. BOARD CONNECTOR | |
| | | DRAFT WHERE APPLICABLE MUST REMAIN WITHIN DIMENSIONS | APPROVED BY J.DENNEHY | DATE | MOLEX | MOLEX INCORPORATED | |
| | AJ | REV | SEE CHART | MATERIAL NO. | DOCUMENT NO. SDA-90148 | SHEET NO. 2 OF 3 | |