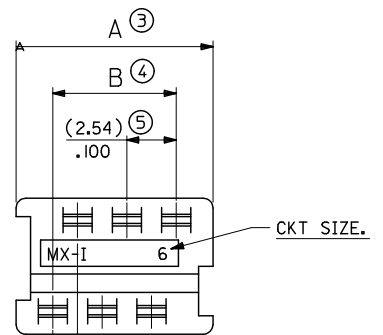


PART NO.	CCT SIZE	DIMENSION A	DIMENSION B	DIMENSION C	TUBE QTY	STACK QTY	TUBES PER STACK
90584 -**26	26	(35.53)/1.399	(31.75)/1.250	(30.48)/1.200	14	98	7
-**24	24	(32.99)/1.299	(29.21)/1.150	(27.94)/1.100	15	105	
-**22	22	(30.45)/1.199	(26.67)/1.050	(25.40)/1.000	16	112	
-**20	20	(27.91)/1.099	(24.13)/.950	(22.86)/.900	18	126	
-**18	18	(25.37)/.999	(21.59)/.850	(20.32)/.800	20	140	
-**16	16	(22.83)/.899	(19.05)/.750	(17.78)/.700	23	161	
-**14	14	(20.29)/.799	(16.51)/.650	(15.24)/.600	26	182	
-**12	12	(17.75)/.699	(13.97)/.550	(12.70)/.500	30	210	
-**10	10	(15.21)/.599	(11.43)/.450	(10.16)/.400	34	238	
-**08	8	(12.67)/.499	(8.89)/.350	(7.62)/.300	42	294	
-**06	6	(10.13)/.399	(6.35)/.250	(5.08)/.200	54	378	
90584 -**04	4	(7.59)/.299	(3.81)/.150	(2.54)/.100	70	490	7



HOUSING

MATL. POLYESTER, RATED UL 94V-0, COLOUR WHITE.

IDT CONTACT

MATL : PHOSPHOR BRONZE (0.28)/.011 REF THICK.
PLATING : (2-4um) / 80-160u' TIN

NOTES:

1. APPL. CLASS TO DIN 40040 HME (-25°C/+100°C)
2. SEE PRODUCT SPECIFICATION PS-99020-0011
3. WIRE TERMINATION SPEC : ES-99033-0002

90584- * * * *

04 TO 26 = CKT SIZE.

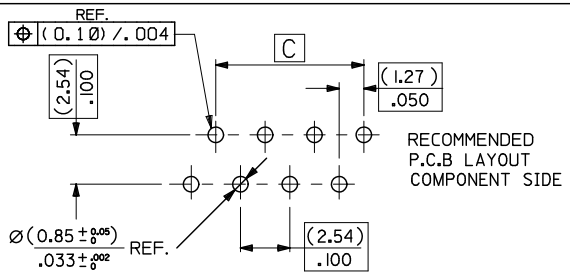
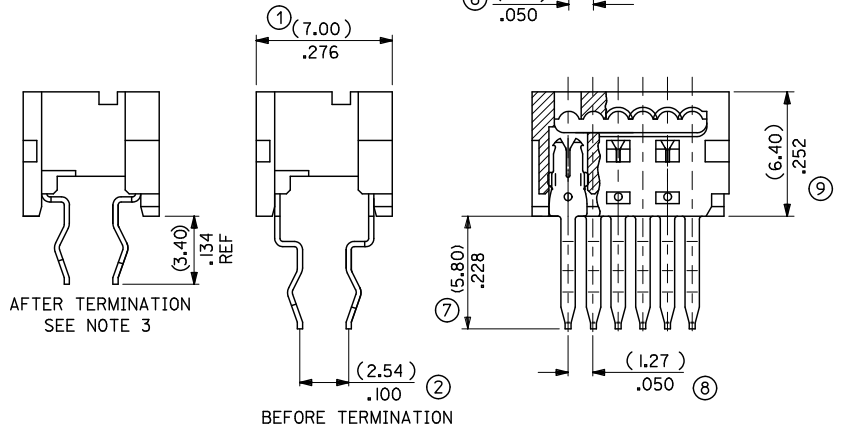
3= NO CIRCUITS VOIDED.

4= CIRCUITS 4 & 5 VOIDED.

1= INDIVIDUAL TUBED ASSY

2= STACKED TUBED ASSY - SEE SHEET 2

9= NON STANDARD OPTION - SEE SHEET 3



RECOMMENDED
P.C.B LAYOUT
COMPONENT SIDE

CORRECTED TOLERANCE		QUALITY SYMBOLS		GENERAL TOLERANCES (UNLESS SPECIFIED)		DIMENSION STYLE		SCALE	DESIGN UNITS	THIRD ANGLE PROJECTION
EC NO.	DATE	SYMBOL	DESCRIPTION	MM	INCH	MM/IN	DATE	5:1	METRIC	THIRD ANGLE PROJECTION
E2011-0043	2010/07/19	∇=0	DESCRIPTION	4 PLACES ± --- ± ---		MM/IN	DATE			
DMC/NAMAR	2003/09/01	▽=0	DESCRIPTION	3 PLACES ± --- ± ---			DATE			
CHKD:BMAGUIRE	2003/09/01		DESCRIPTION	2 PLACES ± 0.25 ± ---			DATE			
APPR:EFOLAN	2010/07/29		DESCRIPTION	1 PLACE ± --- ± ---			DATE			
			DESCRIPTION	ANGULAR ± 2 °						
			DESCRIPTION	DRAFT WHERE APPLICABLE MUST REMAIN WITHIN DIMENSIONS						
			DESCRIPTION	SEE CHART						
			DESCRIPTION	MATERIAL NO.						
			DESCRIPTION	DOCUMENT NO.						
			DESCRIPTION	SDA-90584						
			DESCRIPTION	TITLE						
			DESCRIPTION	1.27MM PF LOW PRO IDT BOARD-IN CONNECTOR						
			DESCRIPTION	MOLEX INCORPORATED						
			DESCRIPTION	SHEET NO.						
			DESCRIPTION	1 OF 3						

10 9 8 7 6 5 4 3 2 1

F F

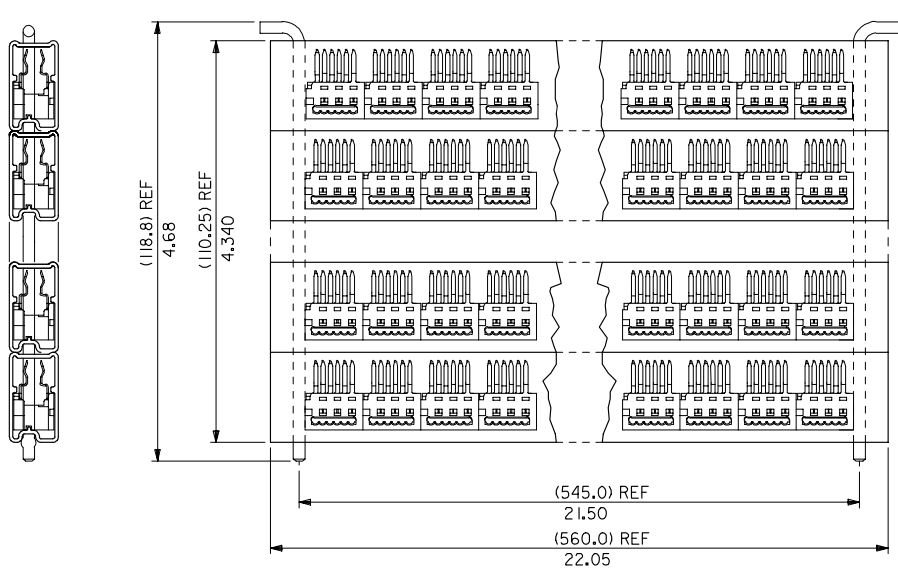
E E

D D

C C

B B

A A



STACKED TUBED ASSEMBLY

REVISION UPDATE EC NO: E2005-1027 DRAWN BY: SKREEN 2005/05/10 CHECKED BY: DMORIARTY 2005/05/10 APPR: JDENNEHY 2005/05/26	QUALITY SYMBOLS ▽=0 ▽=0	GENERAL TOLERANCES (UNLESS SPECIFIED)		DIMENSION STYLE MM/IN		SCALE NTS	DESIGN UNITS METRIC	THIRD ANGLE PROJECTION
		4 PLACES ± --- ± ---	DRAWN BY PW	DATE 1994/02/25	TITLE 1.27MM PF LOW PRO IDT BOARD-IN CONNECTOR			
		3 PLACES ± --- ± .010	CHECKED BY DMORIARTY	DATE 2005/05/06	MOLEX INCORPORATED			
		2 PLACES ± 0.25 ± --- 1 PLACE ± --- ± --- ANGULAR ± 2 °	APPROVED BY JDENNEHY	DATE 2005/05/10	MATERIAL NO. SEE SHEET 1	DOCUMENT NO. SDA-90584		
DRAFT WHERE APPLICABLE MUST REMAIN WITHIN DIMENSIONS	SIZE A3	THIS DRAWING CONTAINS INFORMATION THAT IS PROPRIETARY TO MOLEX INCORPORATED AND SHOULD NOT BE USED WITHOUT WRITTEN PERMISSION						

ib_frame_A3_P_ME_T
Rev. D 2004/04/02

9 8 7 6 5 4 3 2 1